

3.5.12
7.11.12
8.1.13

See detail sketch
7/11/12.

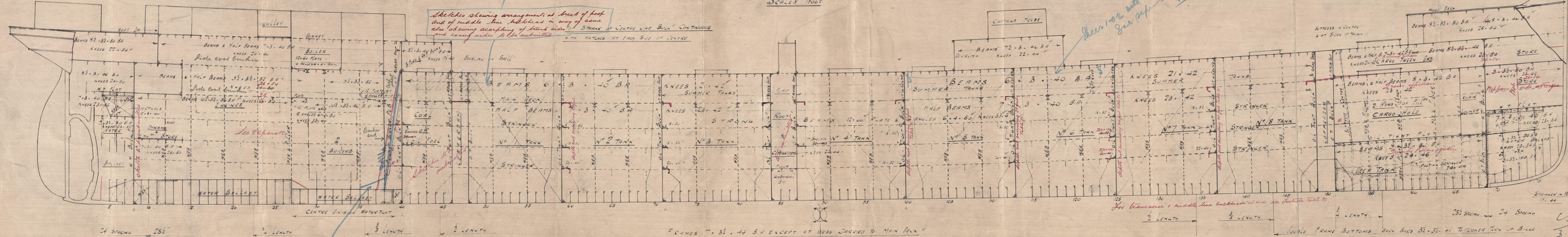
S.S. 643 PROFILE OF OIL STEAMER

380-0 B.P. - 50-6 M/L - 31-0 M/L

SCALE 1/8" = 1 FOOT

Sheet 102 with S/R done sheet
See page 107
7/11/12

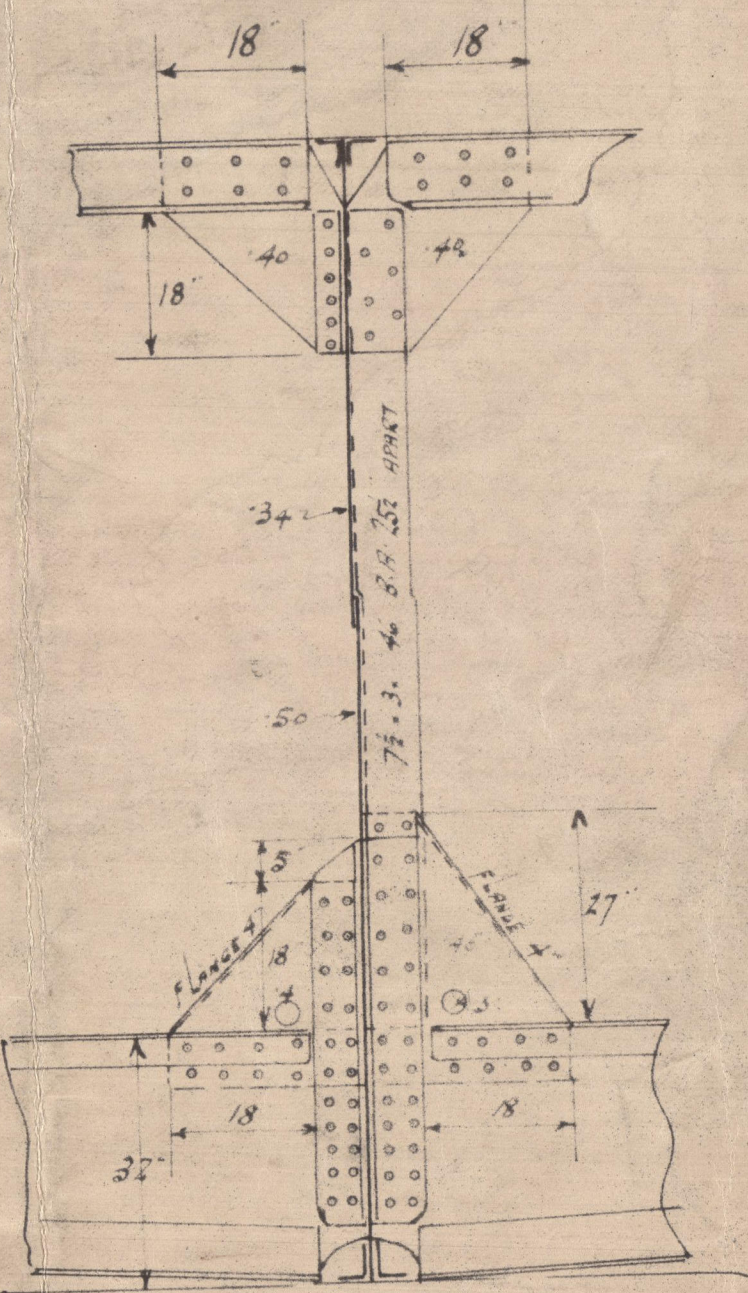
Sketches showing arrangement at breast of poop
and of middle line bulkhead in way of same
also showing scarping of breast side
and casing sides to be submitted



See small sketch
approved 7/11/12

FRAMES 7. 32. 44 B.A. EXCEPT AT WEBS, CARRIED TO MAIN DECK
FRAMES IN TWEEN DECKS 6. 32. 44 ANGLE, ON WEBS 32. 32. 42. SINGLE
Deck plans & sketches of cofferdams to be submitted.

For transverse & middle line bulkheads at ends, see Footnote Table 35.
2 LENGTH
3 LENGTH
4 LENGTH
25 1/2 SPACING
24 SPACING
DOUBLE FRAME BOTTOMS, BACK BARS 32. 32. 40 TO LOWER TURN OF BILGE
FLOORS 32. 40



SECTION THREE DEEP TANK

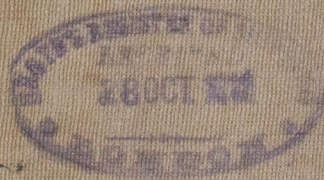
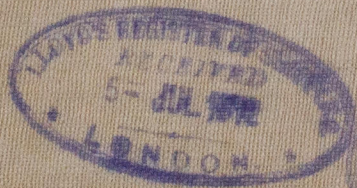
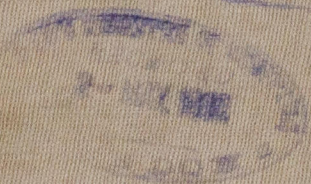
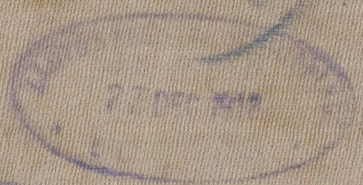
SCALE 1/8" = 1 FOOT

PROFILE

Sh. Langston

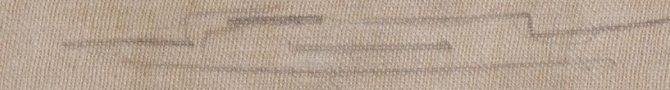
Nº 643

(outlined)



S.S. SHABONEE

SLD RPT No 25895



RETAIN



© 2020

Lloyd's Register
Foundation

5697-0043