

STEEL BOILER

12'-0" INSIDE DIAMETER

10'-1 1/2" OUTSIDE LENGTH

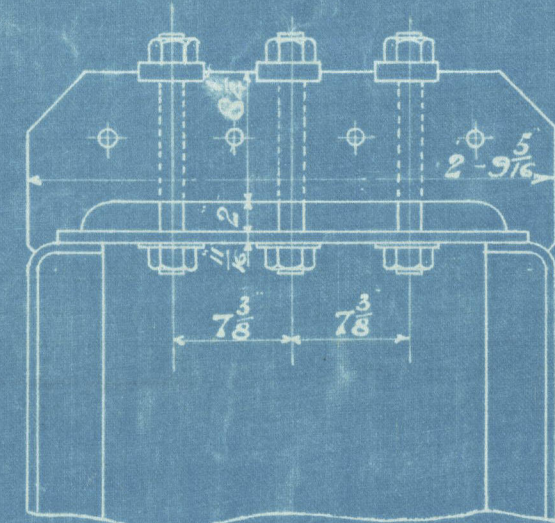
WORKING PRESSURE 120 LBS.

TEST PRESSURE 240 LBS.

DRAWING N° 2645

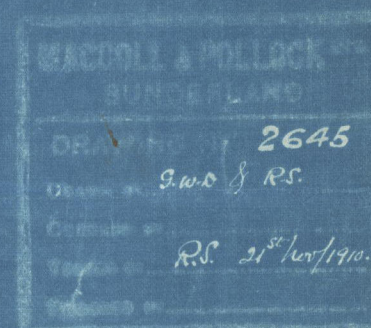
HEATING SURFACE

3 - 1 1/2" STEEL STAYS
4 - 8" RIVETS
2 - 16" PLATES



SECTION OF WING COMB CHAMBER
SHOWING GIRDER WITH 3 STAYS

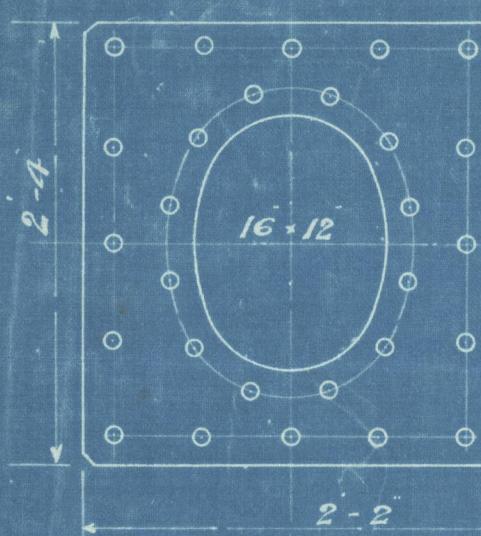
DESCRIPTION	MATERIAL	TENSILE STRENGTH
SHELL PLATES MANHOLE PLATE BUTT STRAPS	STEEL	28 1/2 TO 32 TONS
GIRDERS	"	26 TO 30 "
ALL OTHER PLATES	"	26 TO 30 "
MAIN STAYS	"	28 TO 32 "
SCREWED STAYS	"	26 TO 30 "
RIVETS	"	26 TO 30 "
TUBES	IRON	



TO PASS LLOYD'S SURVEY

SCALE 1" = 1'00"

1" OFF THIS



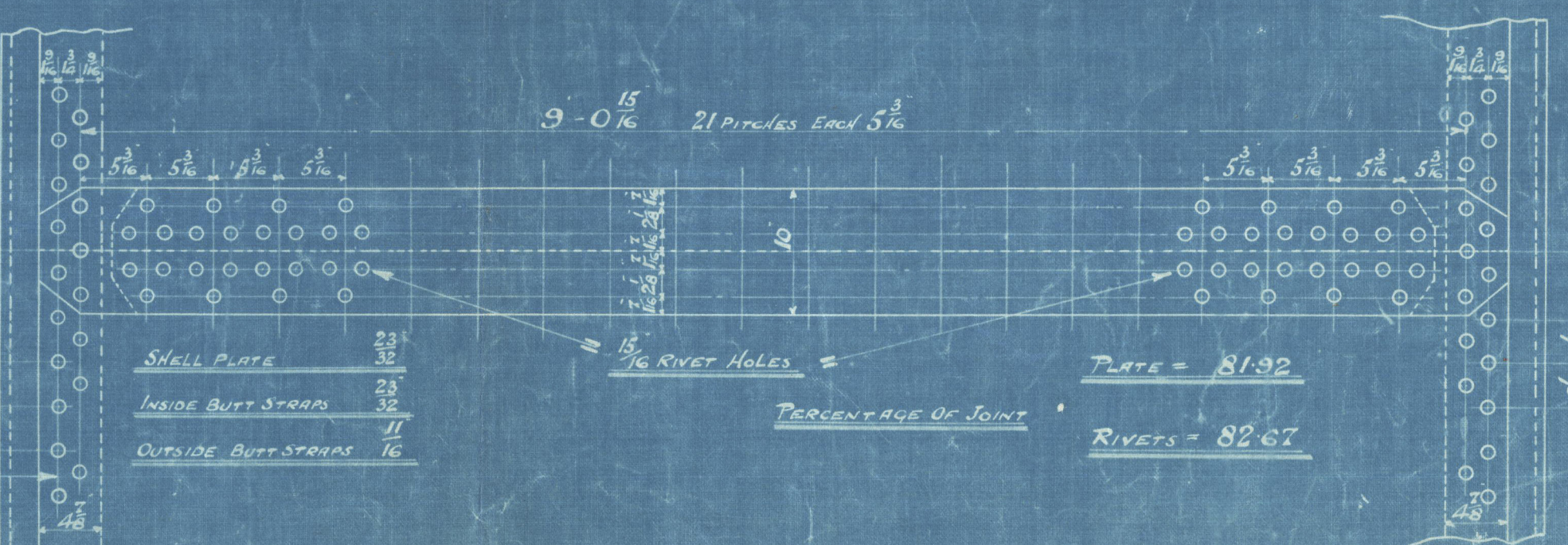
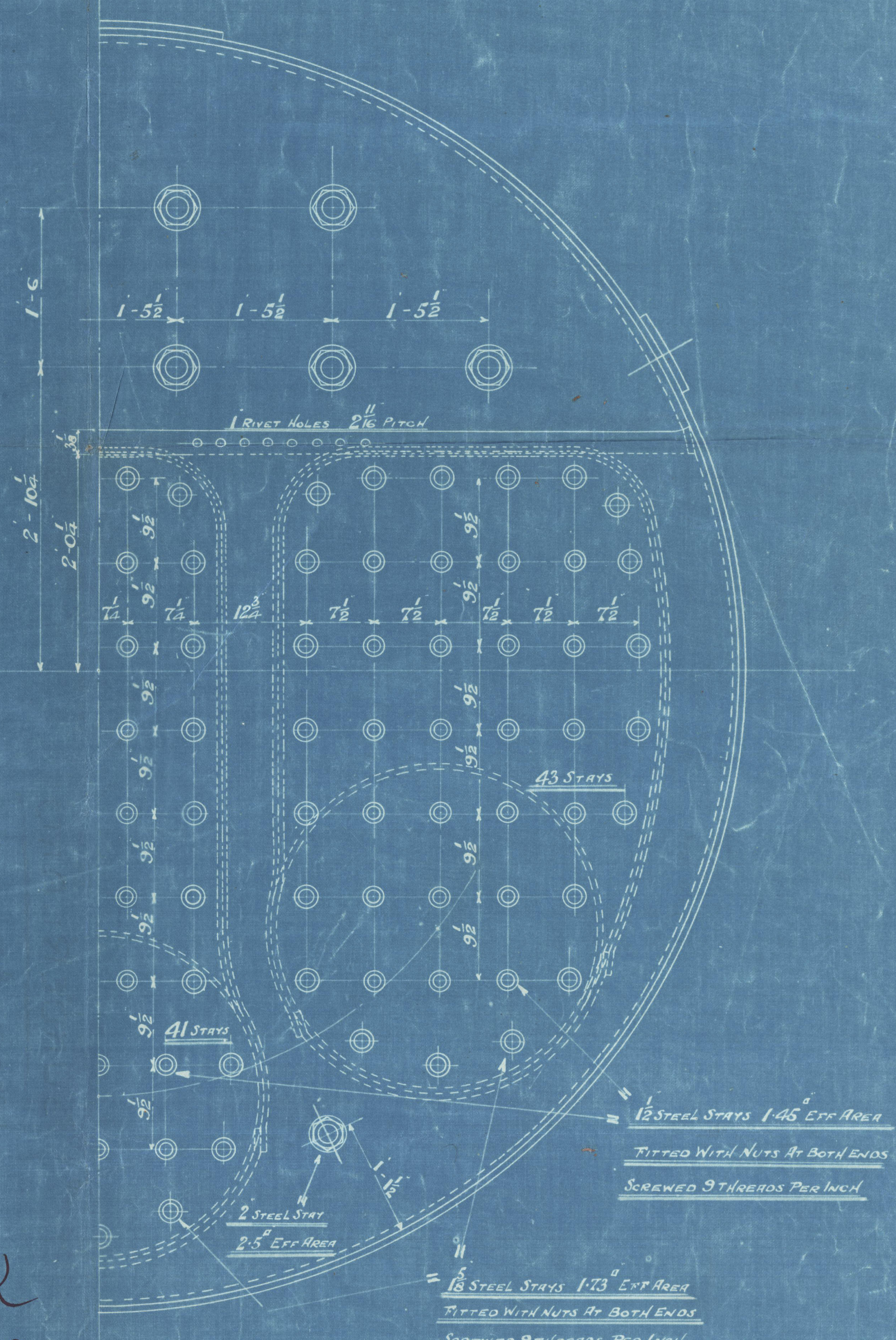
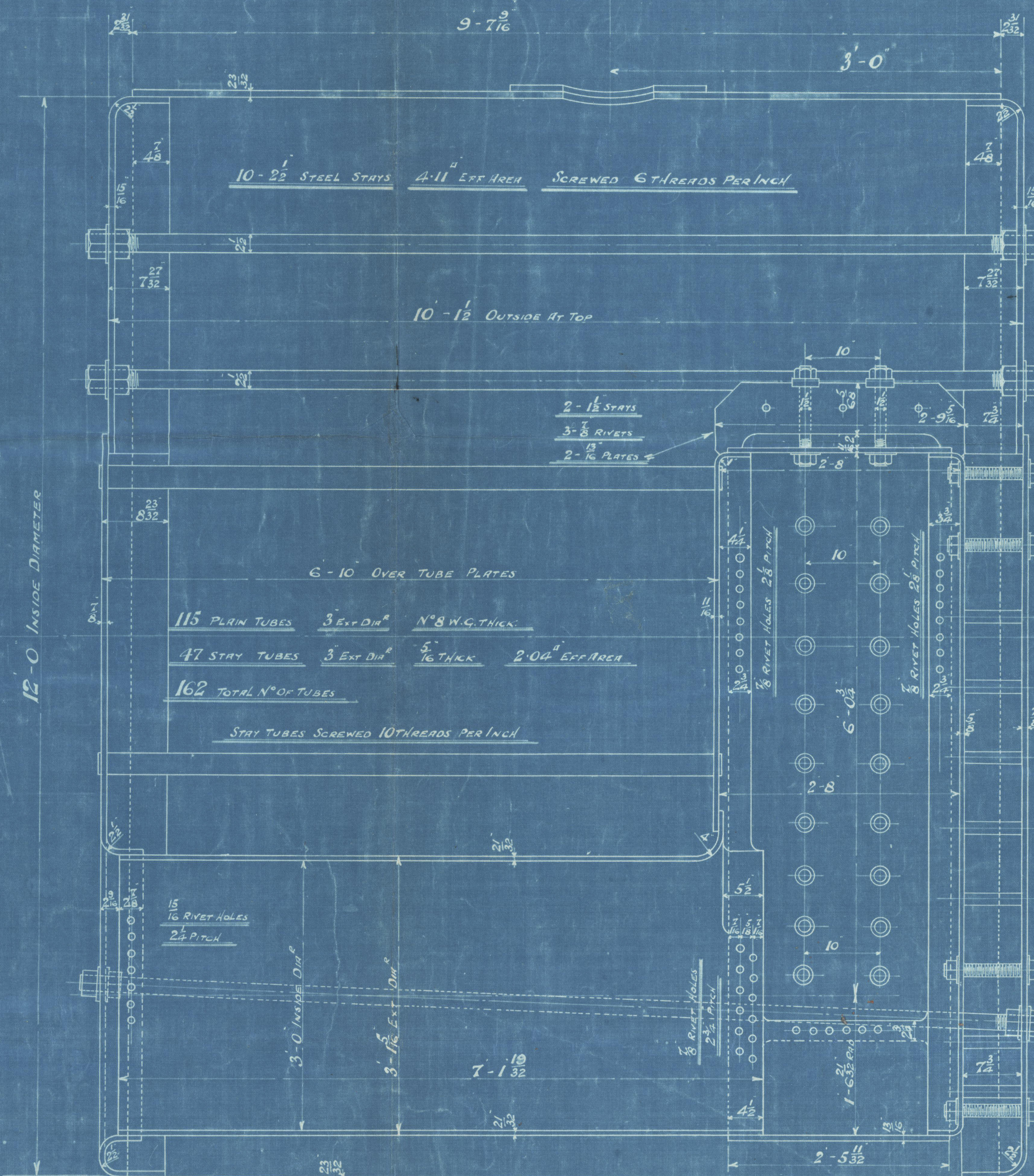
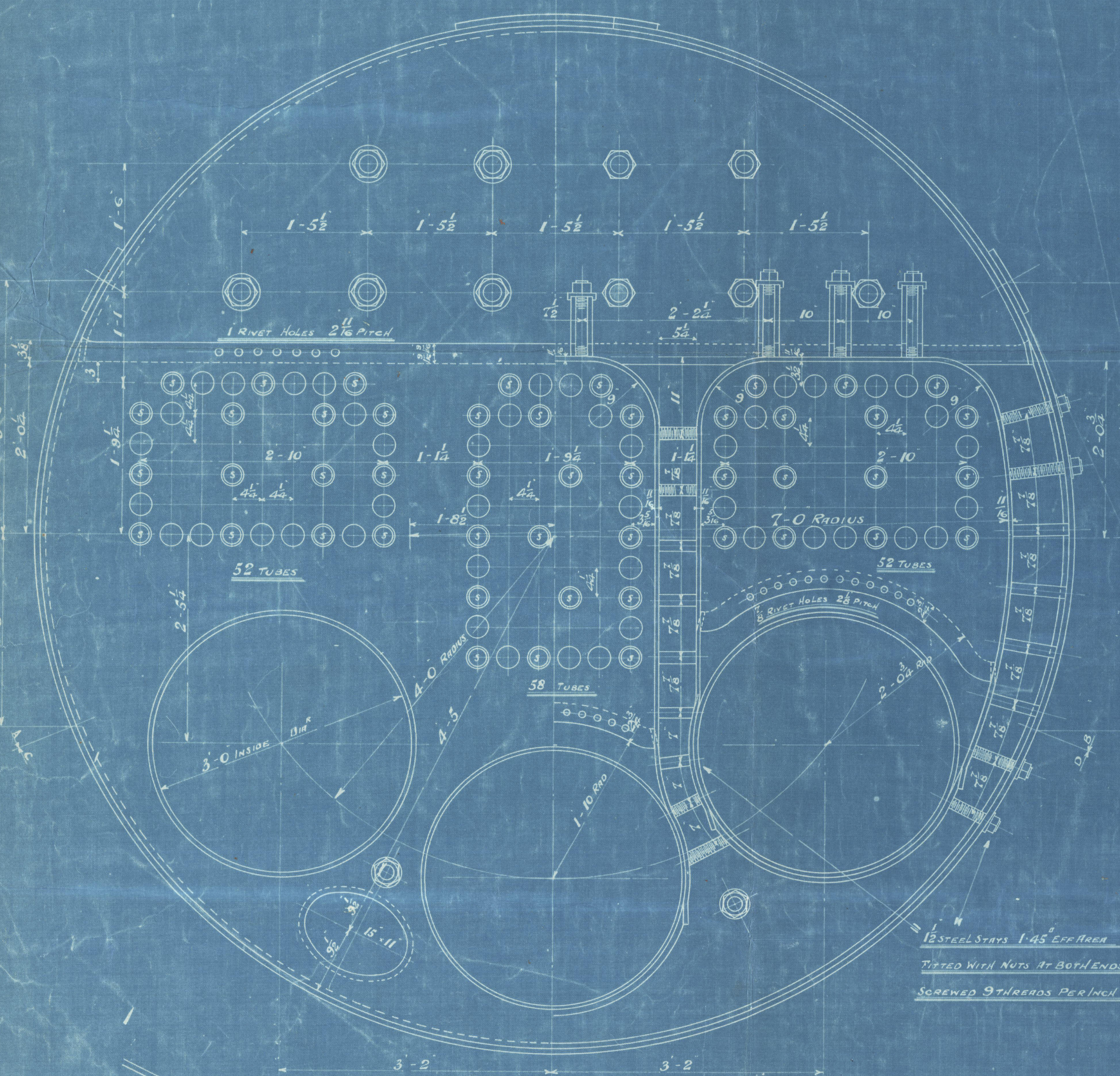
2 1/2" PLATE
15/16" RIVET HOLES

TUBES	853
TURNAGES	98.4
FRONT TUBE PLATE	19
BACK TUBE PLATES	27.6
COMBUSTION CHAMBERS	150
	1148 Total

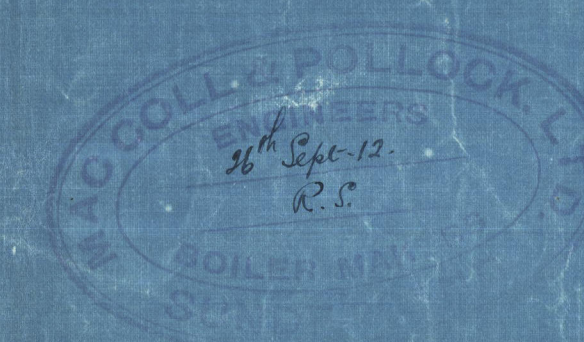
GRATE SURFACE (4'-0" BAR) = 36 1/2

RATIO H.S. = 31.88
G.S. = 1

RIVETING ROUND TOP OF CIRCUMFERENTIAL SEAMS FROM N° 1 TO B



APR 30.9.12



BOILER N° 603-GP-631

For Messrs Short Bros & Co. Ltd. 55, Victoria Road, Glasgow

SUNDERLAND

MACCOLL & POLLOCK LTD

BOILER NO 631

(W.P. = 120 LBS)

(Duplicate of Nos 603 & 619)

SHORT BROS S/S NO 381

Mark on boiler:-

NO 3133

LLOYD'S TEST

240 LBS

31-7-1913

L.C.D.

~~S/S "Anglo Brazilian"~~

~~S.S. "Anglo Egyptian"~~

Sld Rpt No 25933



REPAIR



© 2021

W696-0049

Lloyd's Register
Foundation