

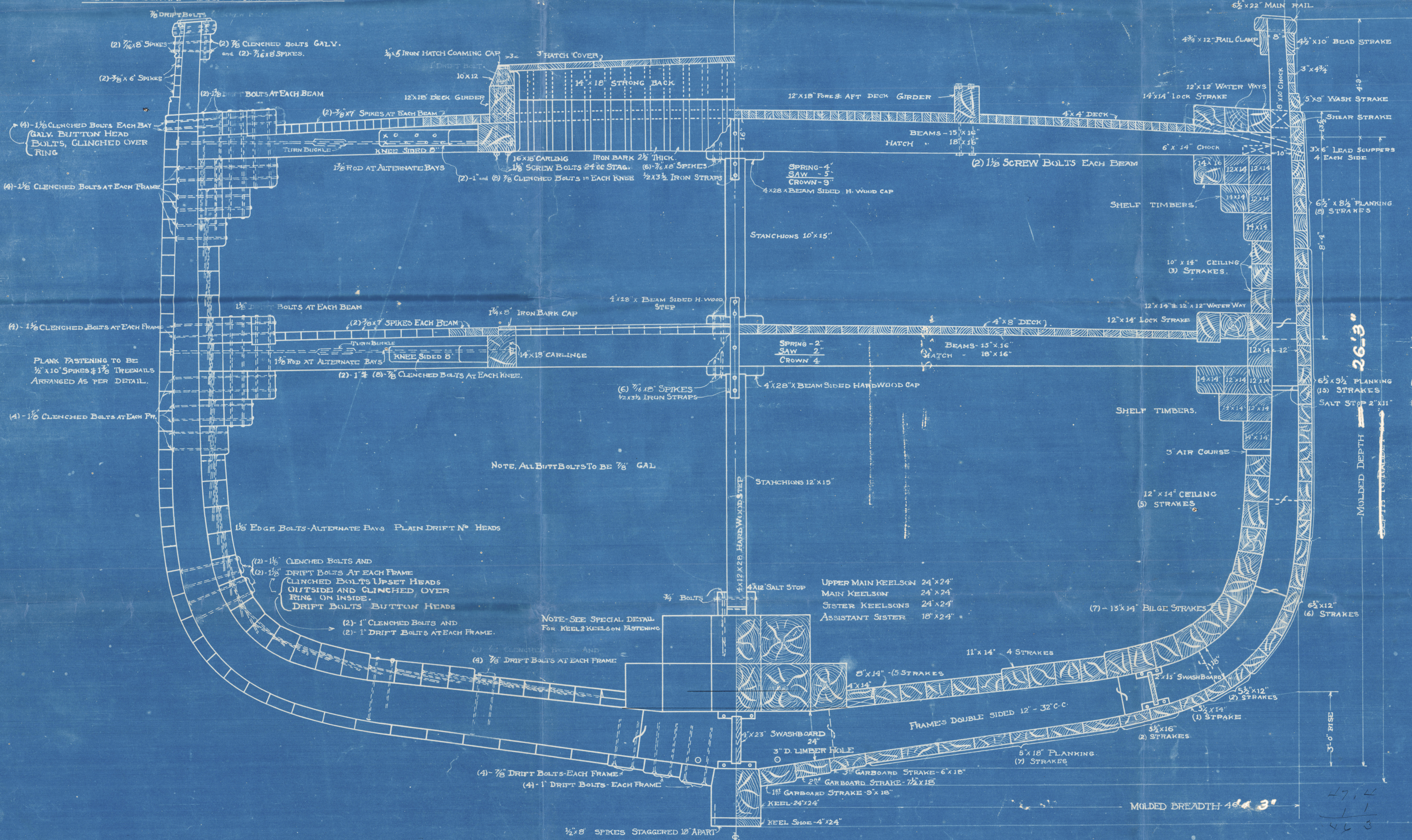
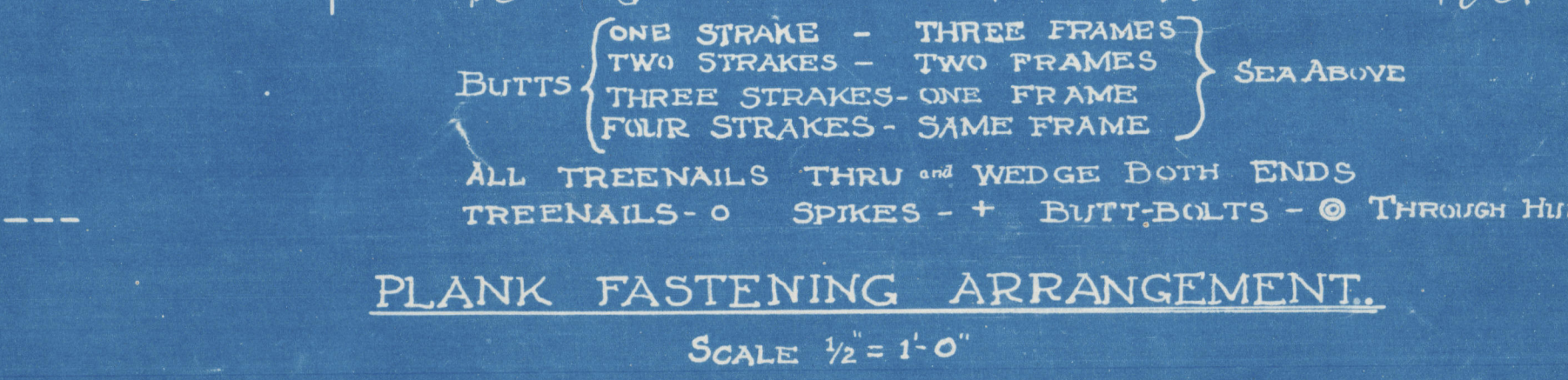
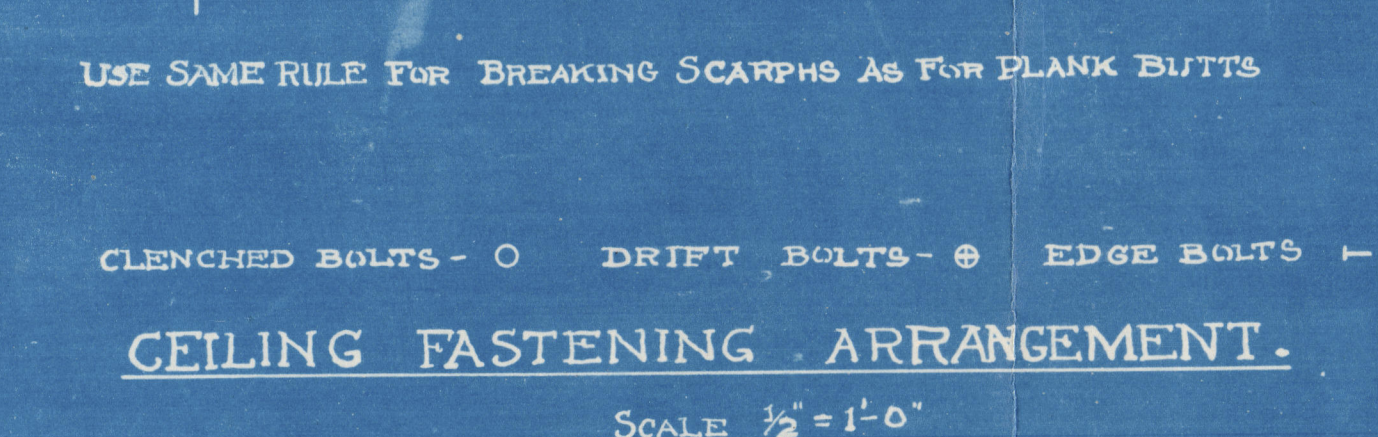
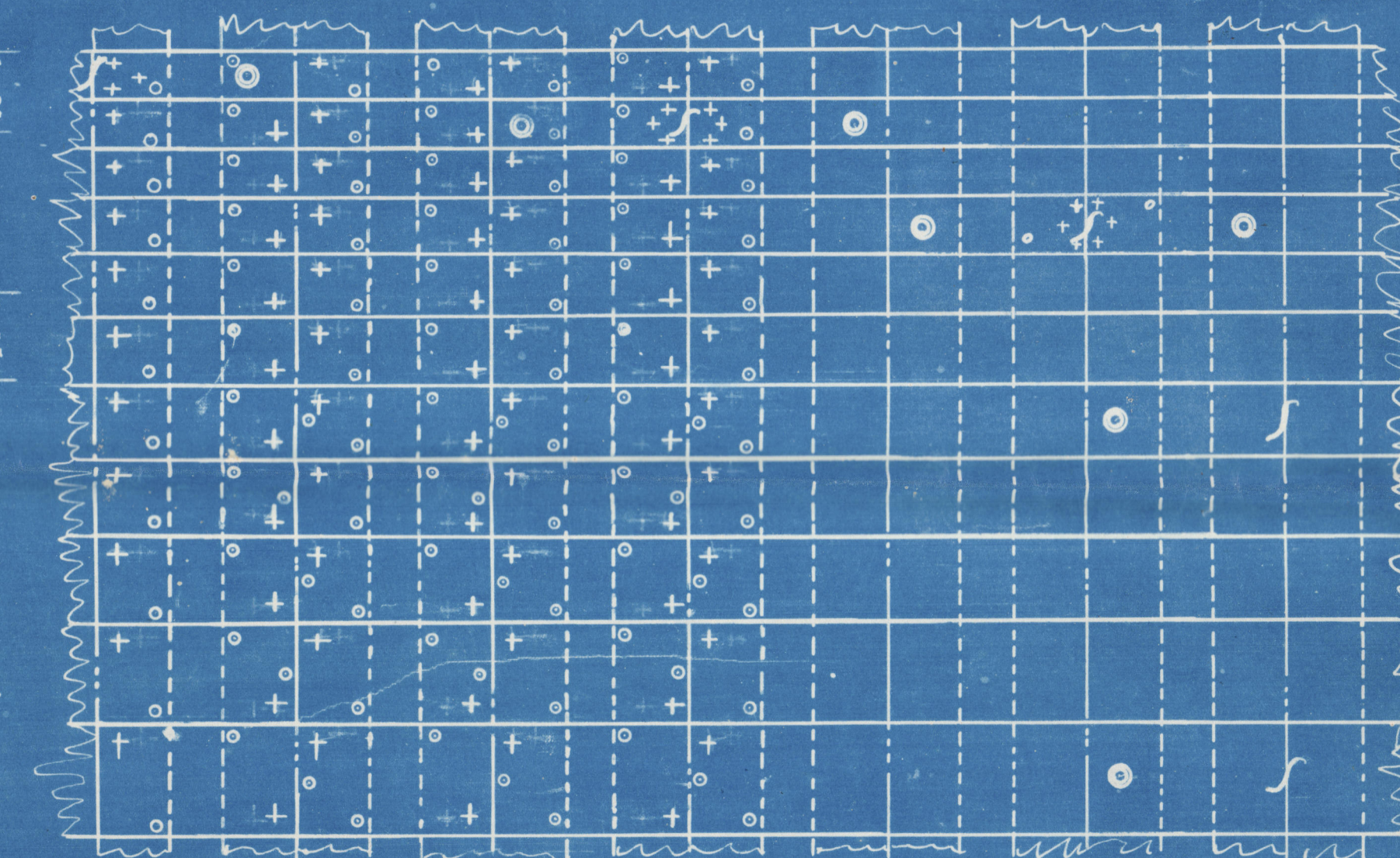
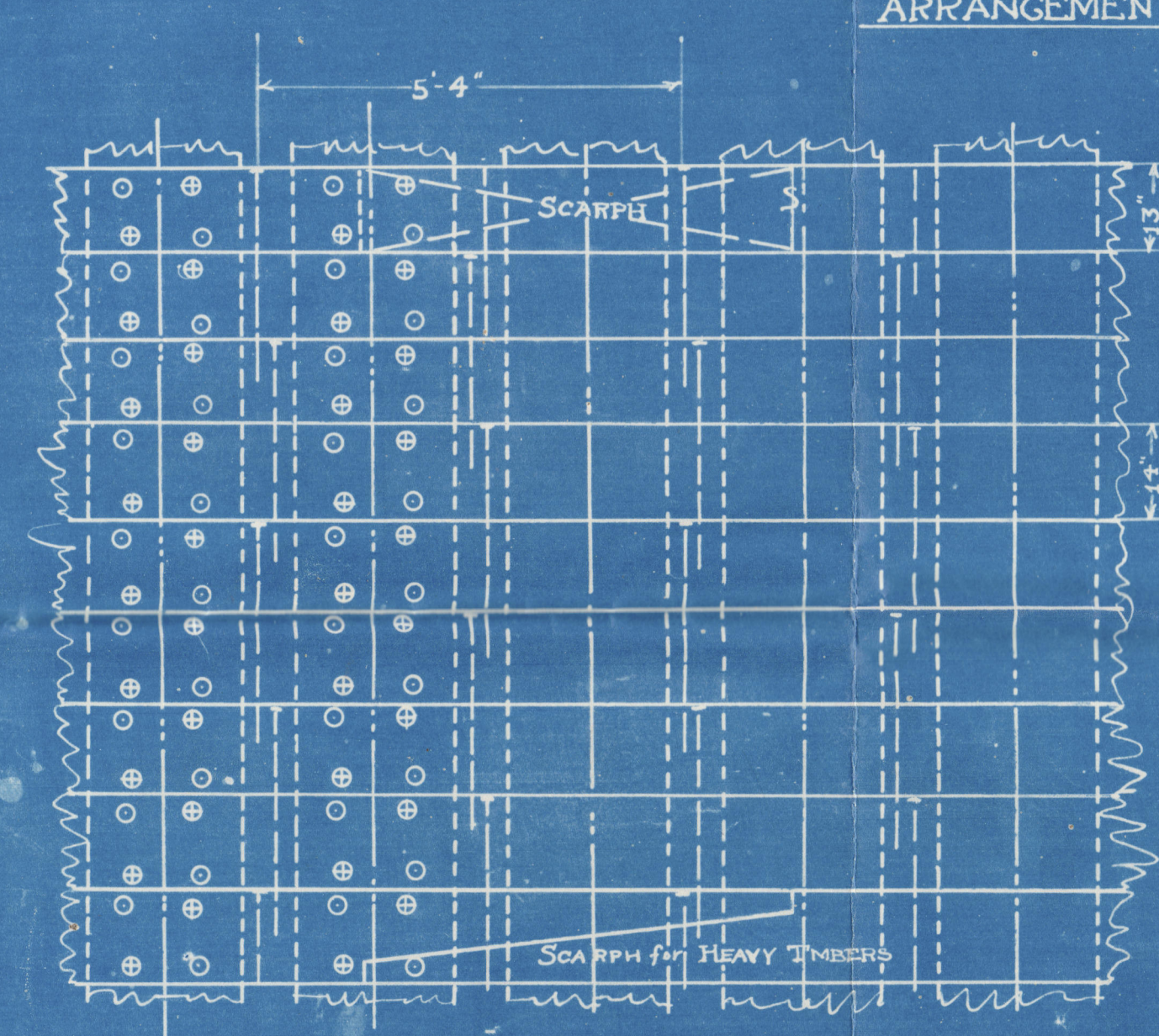
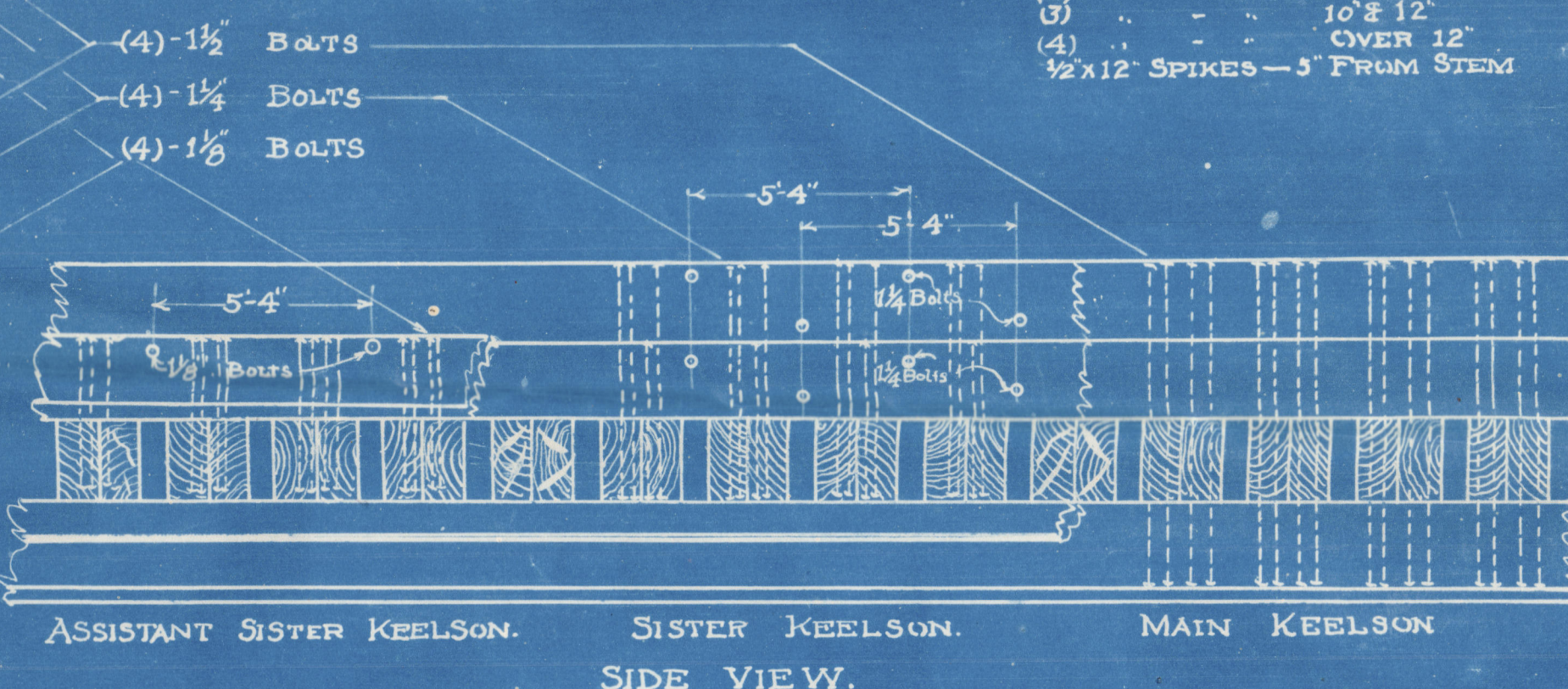
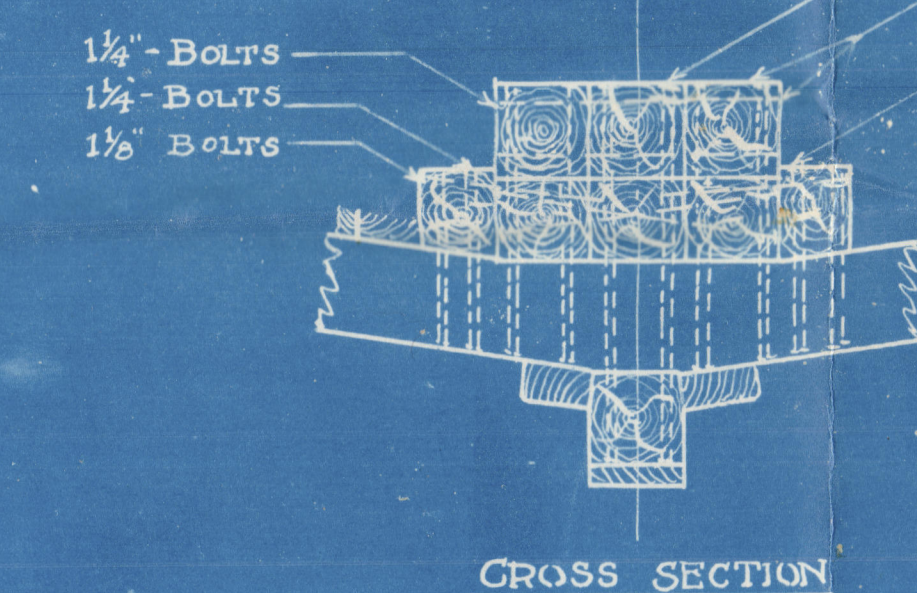
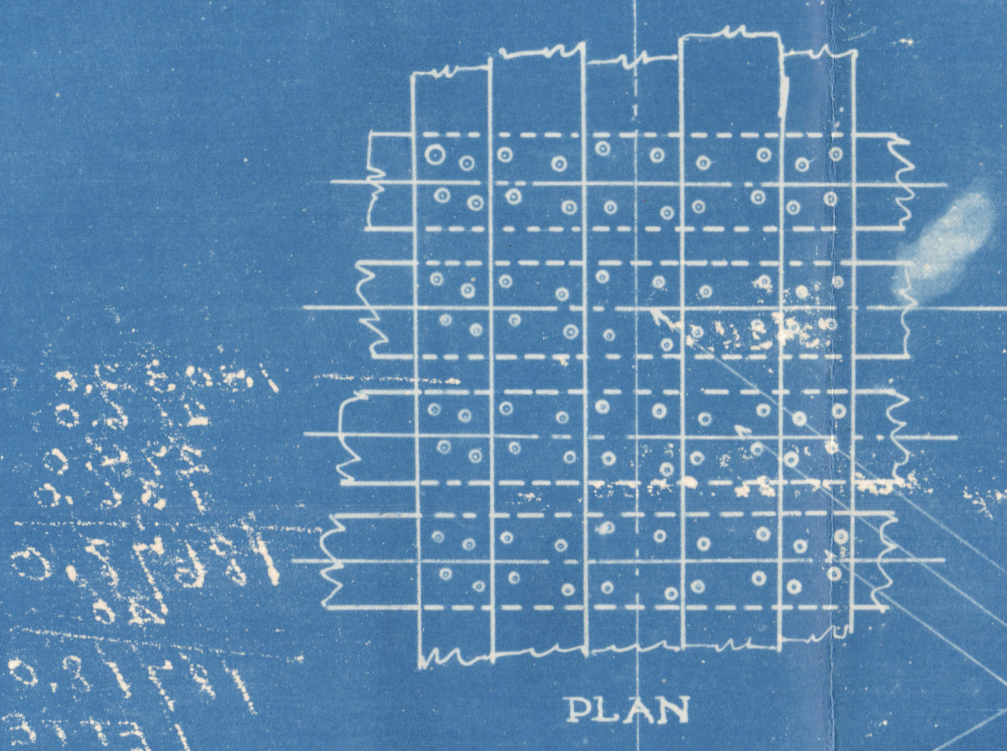
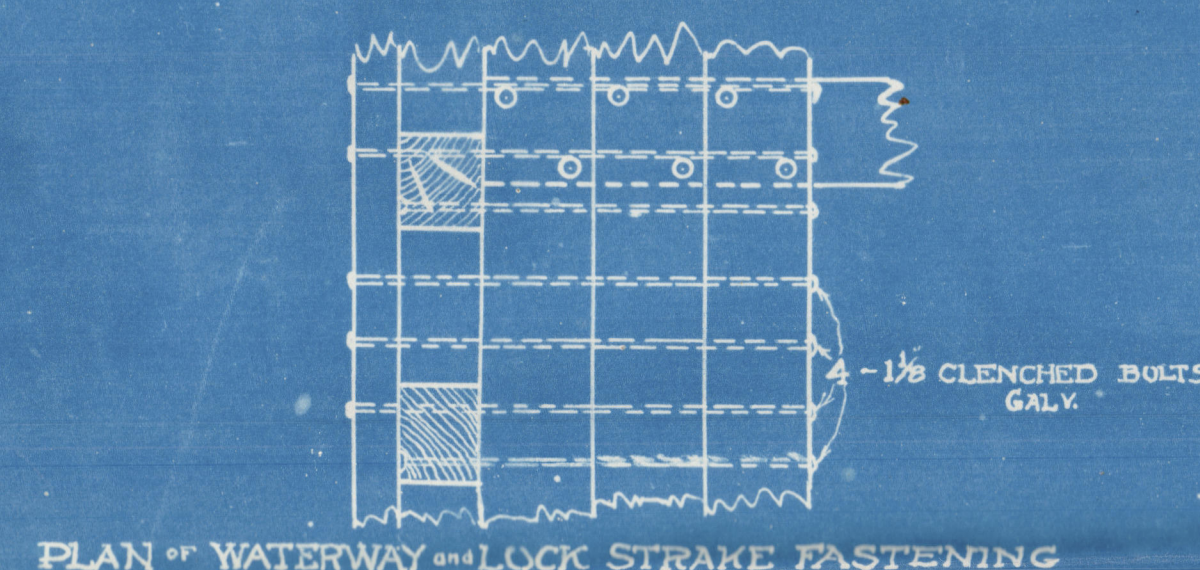
JOB No. 1 FILING No. 5  
SHEET No. 1 No SHEETS  
DRAWN BY R.C.S. TRACED BY o.d.a.  
CHECKED BY \_\_\_\_\_ APPROVED BY \_\_\_\_\_  
SCALE  $\frac{1}{2} = 1'-0"$  DATE JULY 17 '18

**NUMERAL**

1<sup>st</sup> Numeral =  $(471 + 260) \times 24.5 = 17999.5$     18032.0  
Focle " =  $36.0 \times 80 \times .75 = 216.0$     228.0  
Popr " =  $48.0 \times 90 \times .75 = 294.0$     279.0  
*Pap Boat Haver* 551.00.00.    1841.90    1786.00

**EQUIPMENT**

1<sup>st</sup> Bowser - Stockless - 35% Cut = 59796 lbs.    17678.0  
2<sup>nd</sup> " " " " " " " " = 3360    40    *p/c's house*  
3<sup>rd</sup> " " " " " " " " = 3360  
Stream (except Shock) 9% = 12.95    18718.0  
Kedge (" " " " ) 4% = 666    **LETTER-J**  
Cable - 20 fms 1 1/2" 370 Cwt - 12 lbs = 4140 lbs.  
Stream Wire 75 fms 1/4" Galv. Steel Wire.  
Tow Line 90 fms 1/2" 3"  
Hawsers - Two 80 fms 1/2" - 6" Manila.



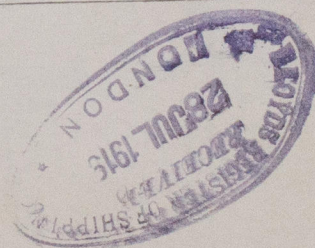
**CONSTRUCTION - SECTION**  
SCALE:  $\frac{1}{2}" = 1'-0"$



MIDSHIP SECTION  
M.S. "TROLLTIND"  
VESSEL-NO. 1.

ELLIOTT BAY SHIPBUILDING CO.  
"

Sea 1<sup>st</sup> Report No 845



W695-0165-

RECEIVED



© 2020

Lloyd's Register  
Foundation