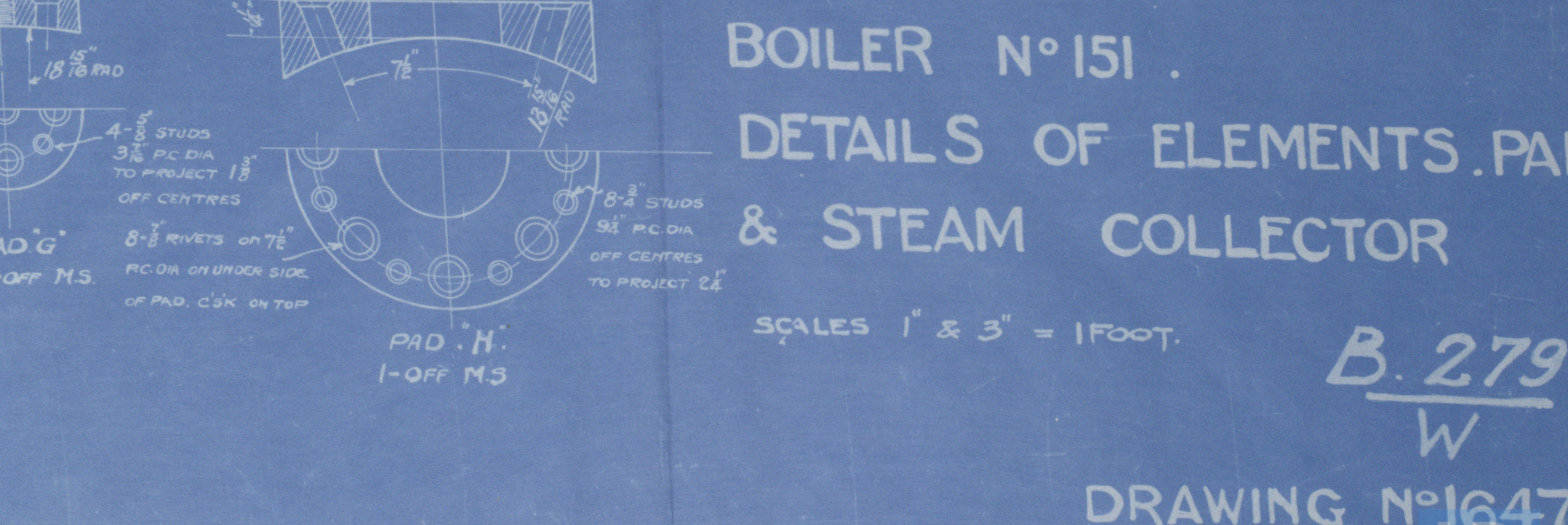
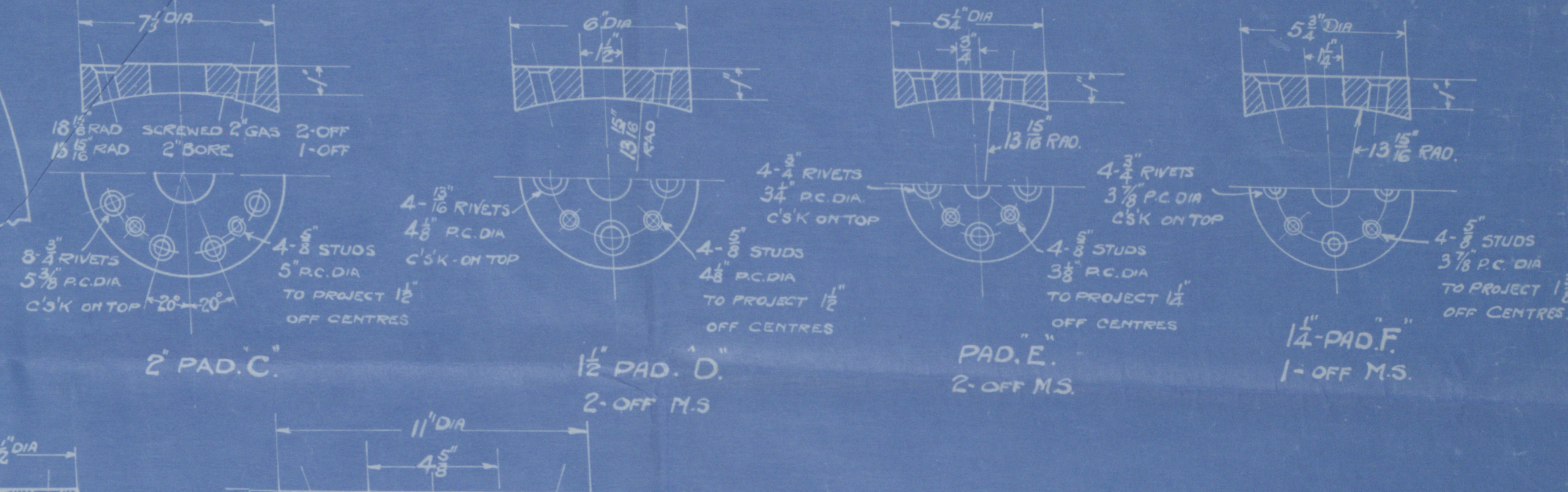
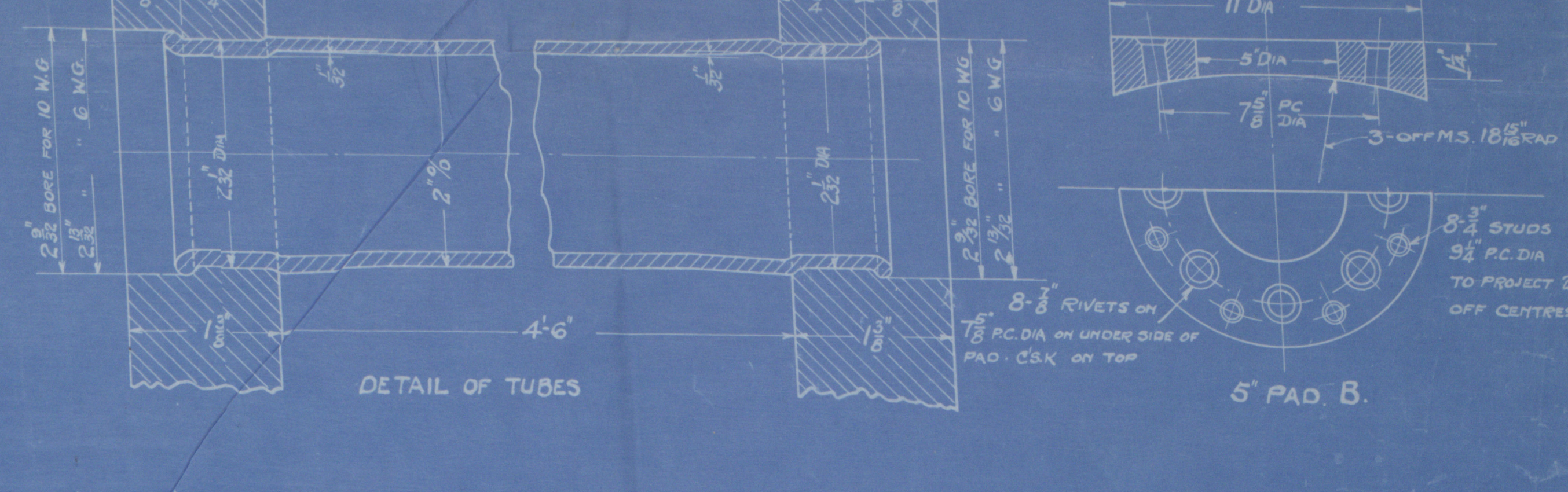
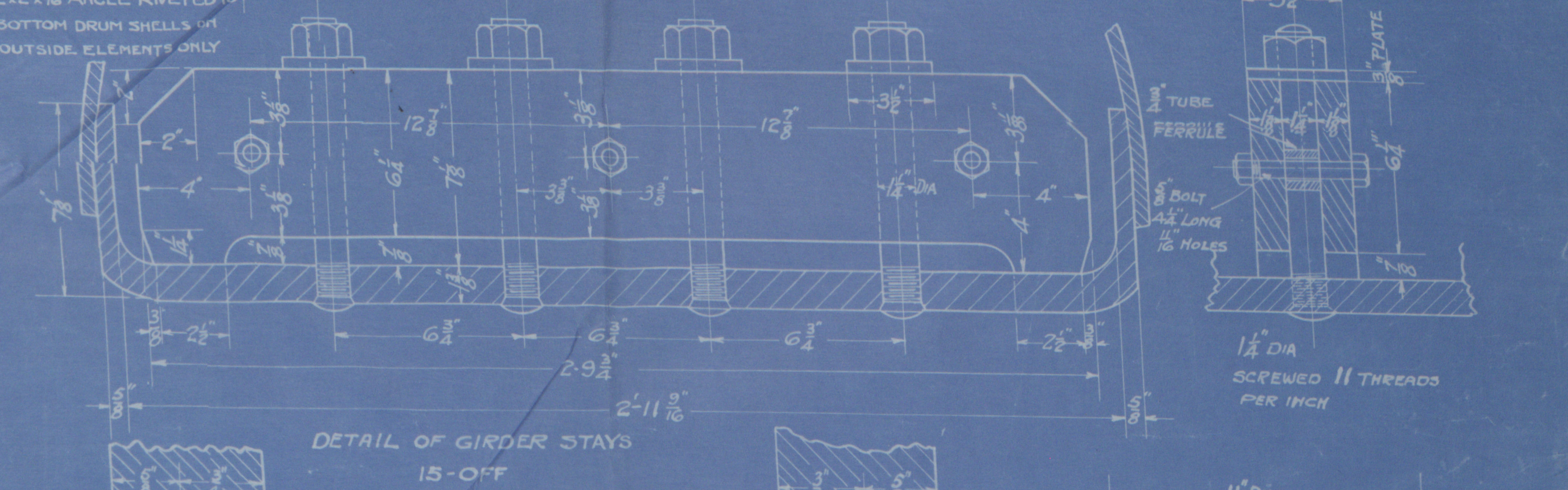
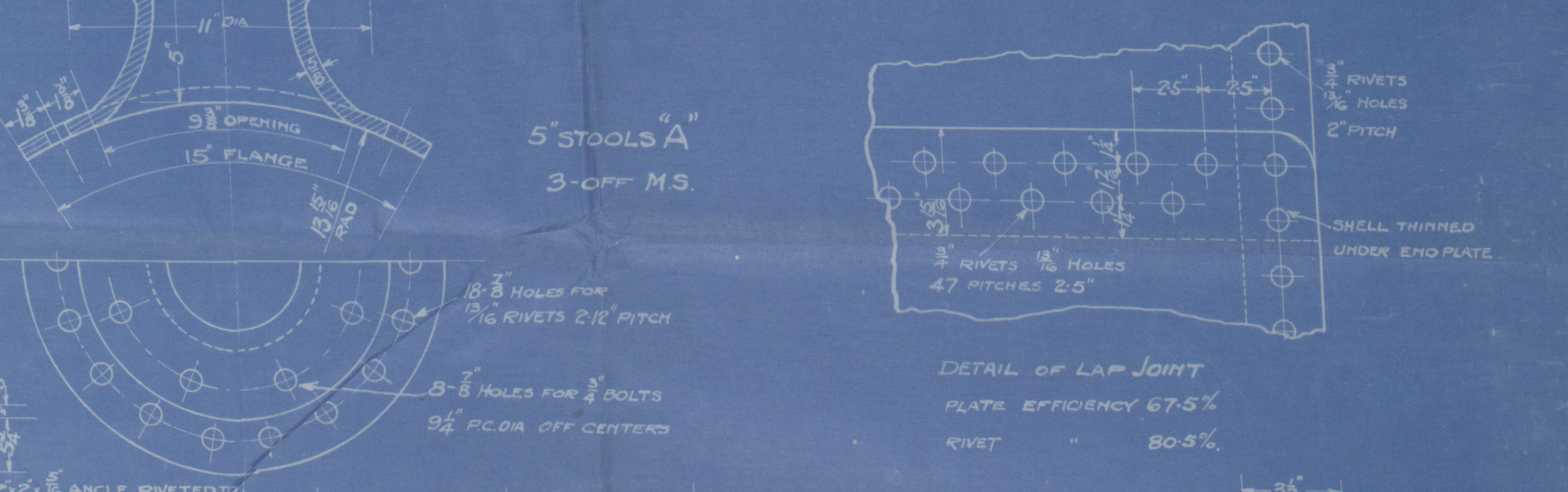
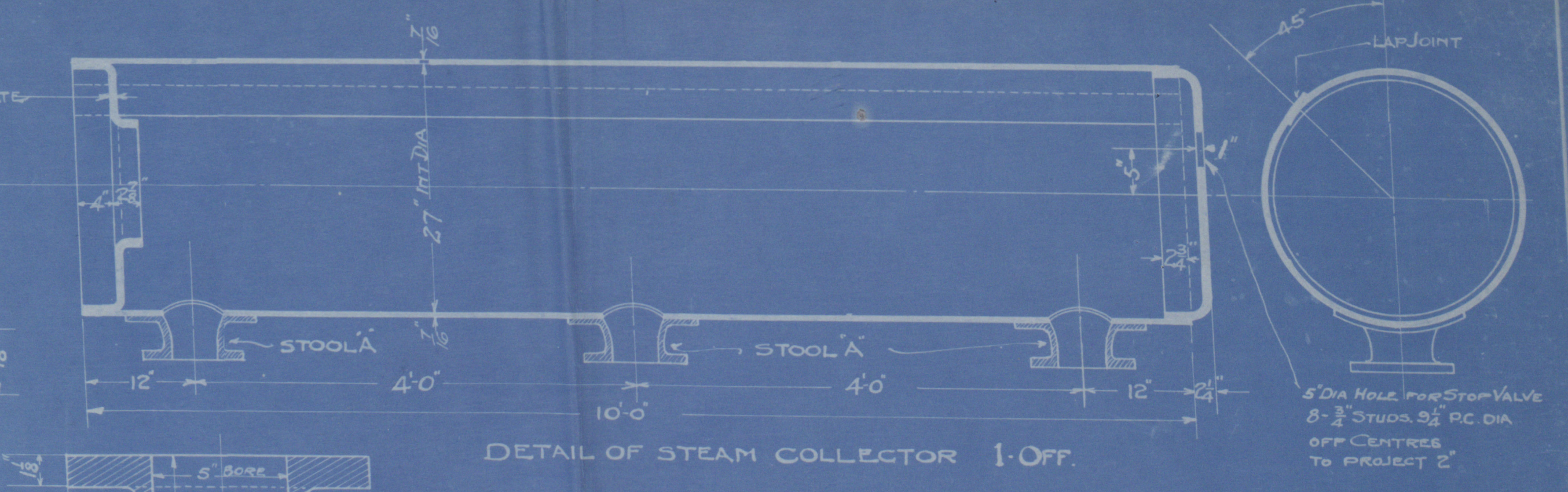


PLATES	TENSILE STRENGTH	ELONGATION
STEAM & WATER DRUM ENDS	26 TO 30 TONS	23% IN 8"
TOP & BOTTOM TUBE PLATES	26 TO 30 TONS	23% IN 8"
BOTTOM DRUM SHELL	26 TO 30 TONS	23% IN 8"
STEAM HEADER ENDS	26 TO 30 TONS	23% IN 8"
TOP DRUM SHELL PLATE	26 TO 30 TONS	23% IN 8"
GIRDER STAY PLATES	26 TO 30 TONS	20% IN 8"
STEAM HEADER SHELL	26 TO 30 TONS	20% IN 8"
WORKING PRESSURE 185 LBS PER SQ IN		
HYDRAULIC TEST PRESSURE 370 LBS PER SQ IN		
ALL TO THE REQUIREMENTS & SURVEY OF LLOYD'S REGISTER OF SHIPPING & HYDRAULIC TEST BY BRITISH S.O.T.		



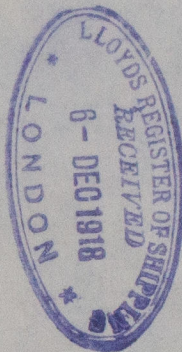
BOILER N° 151.
DETAILS OF ELEMENTS, PADS
& STEAM COLLECTOR

SCALES 1" & 3" = 1 FOOT.

B. 279
W
DRAWING N° 1647

How Babine

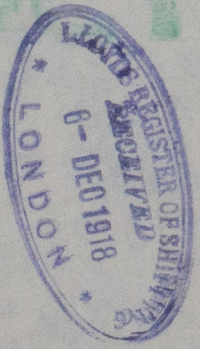
Seattle Refrout No. 733



W694 - 0098

W694 - 0098

RETAIN



© 2021

Lloyd's Register
Foundation