

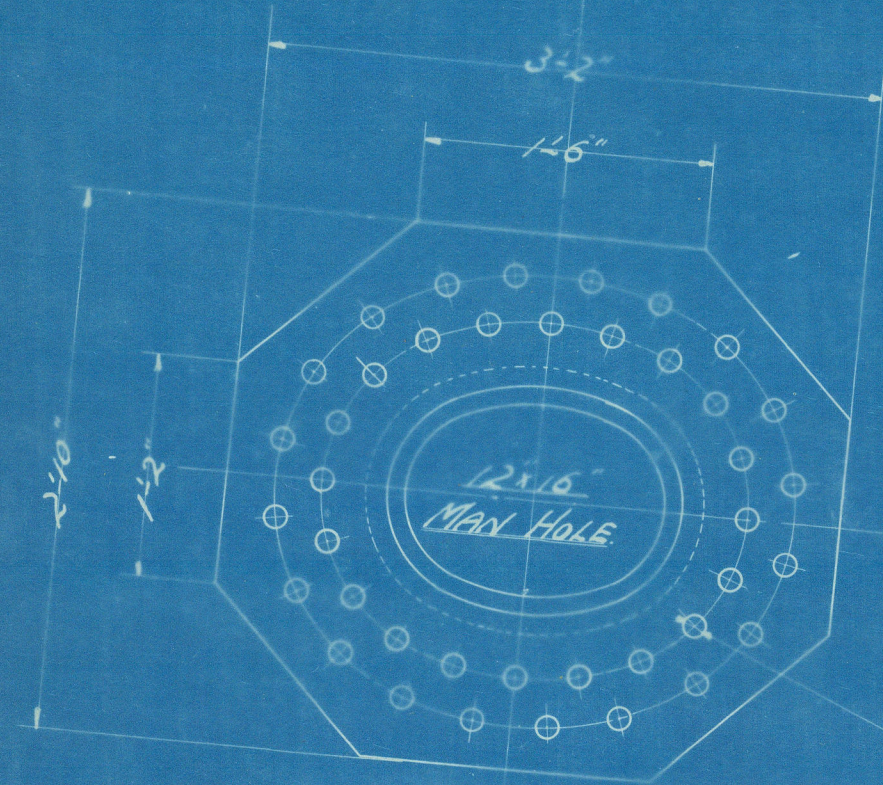
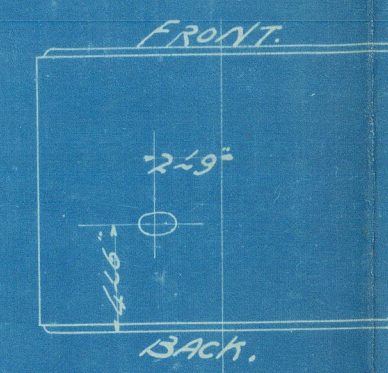
STEEL BOILER FOR N° SS2

W.P. 200 LBS./sq"

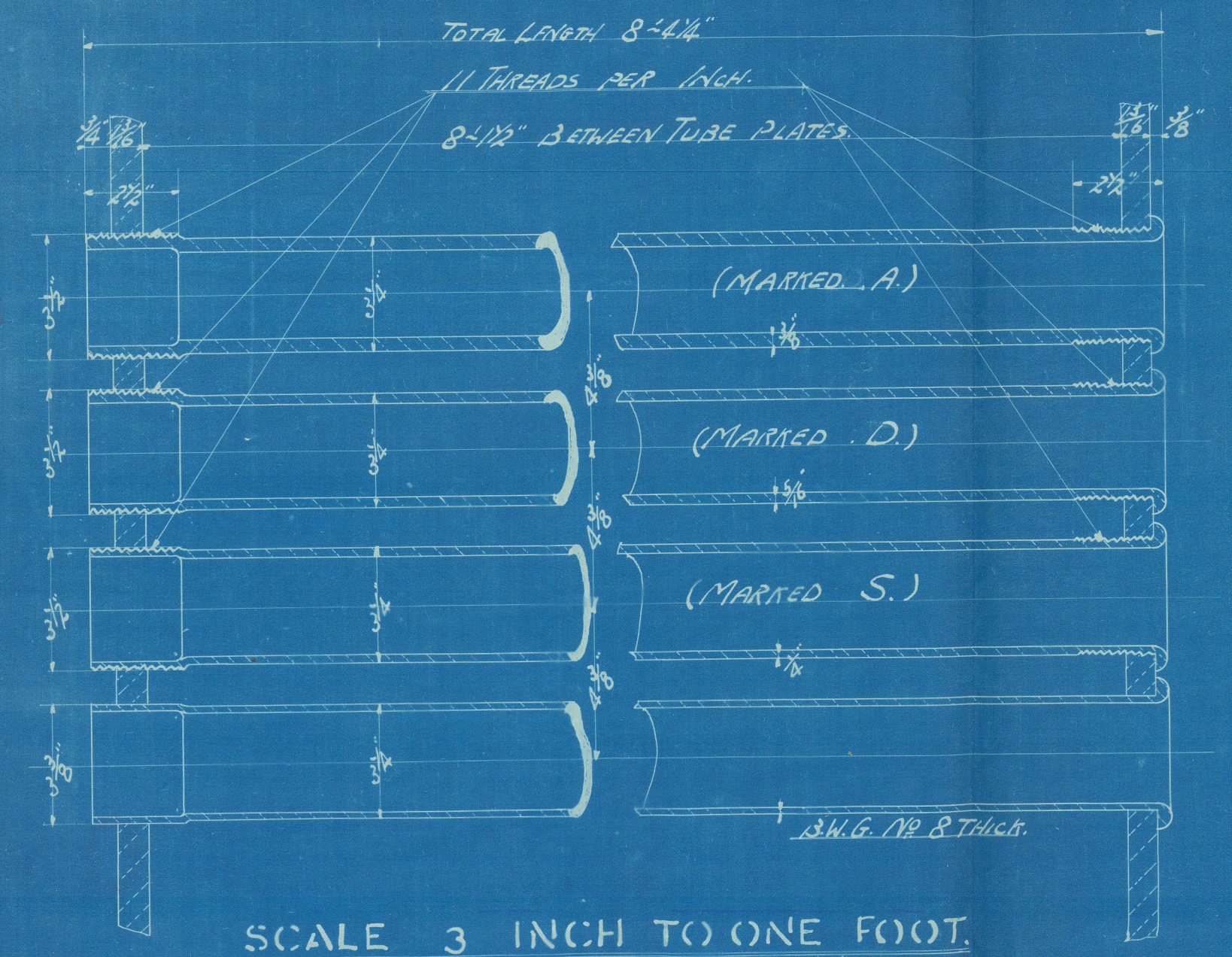
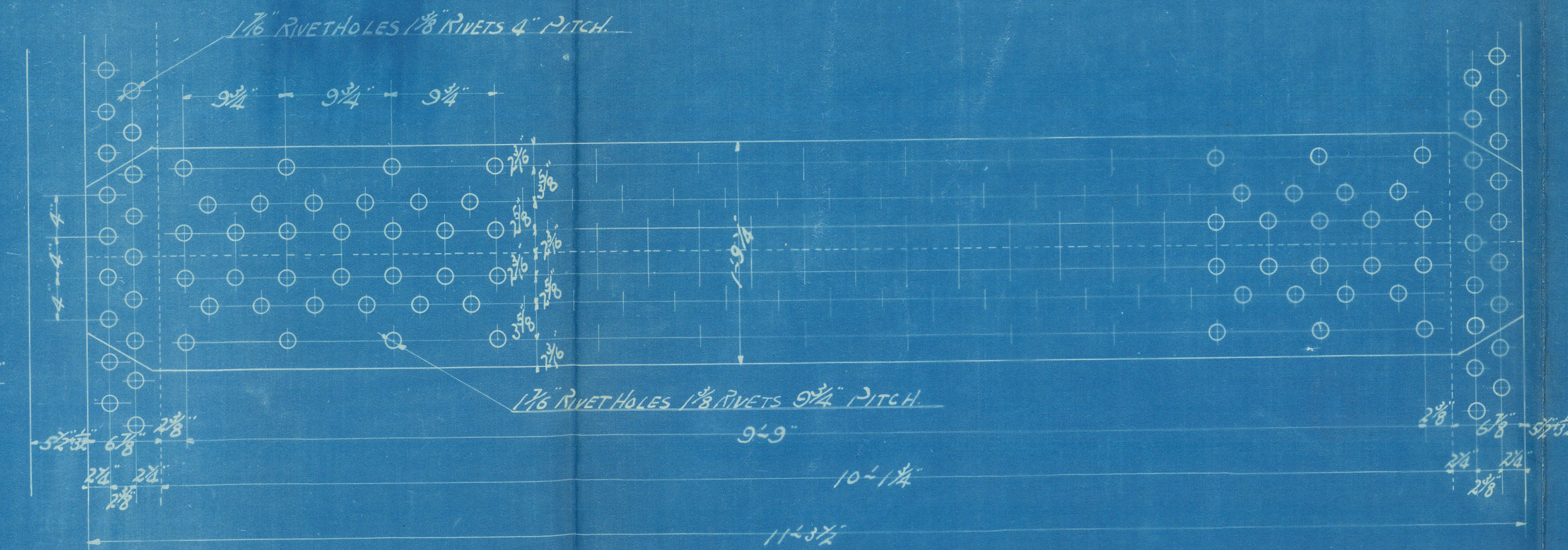
ONE OFF
SCALE 1 INCH TO ONE FT. (CENTER BOILER.)

TENSILE STRENGTH OF SHELL PLATES
TO BE NOT LESS THAN 28 TONS/sq"

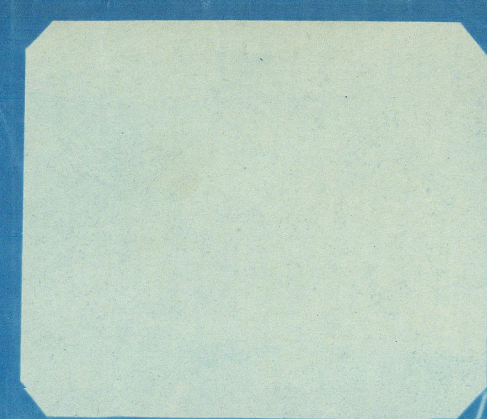
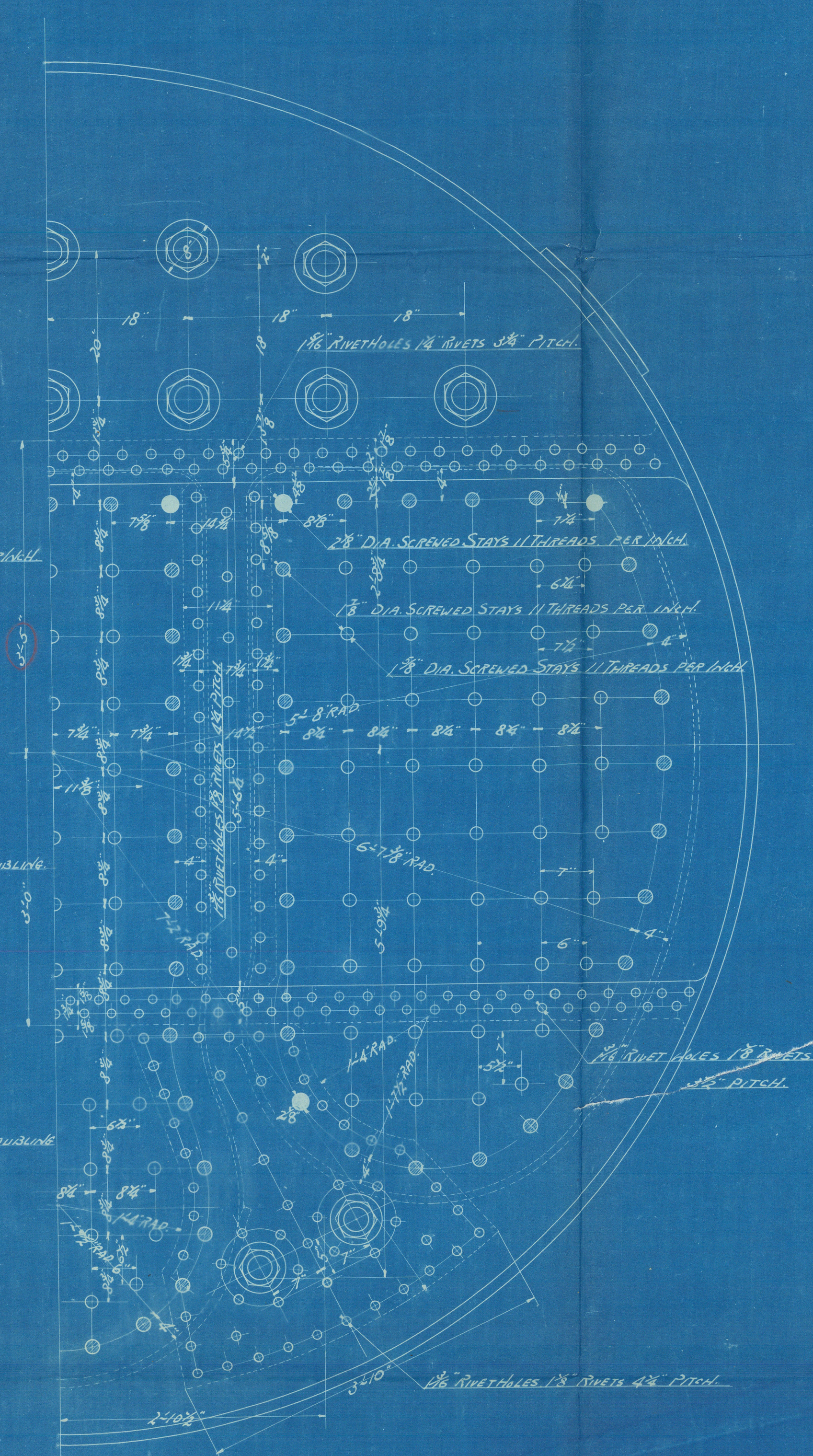
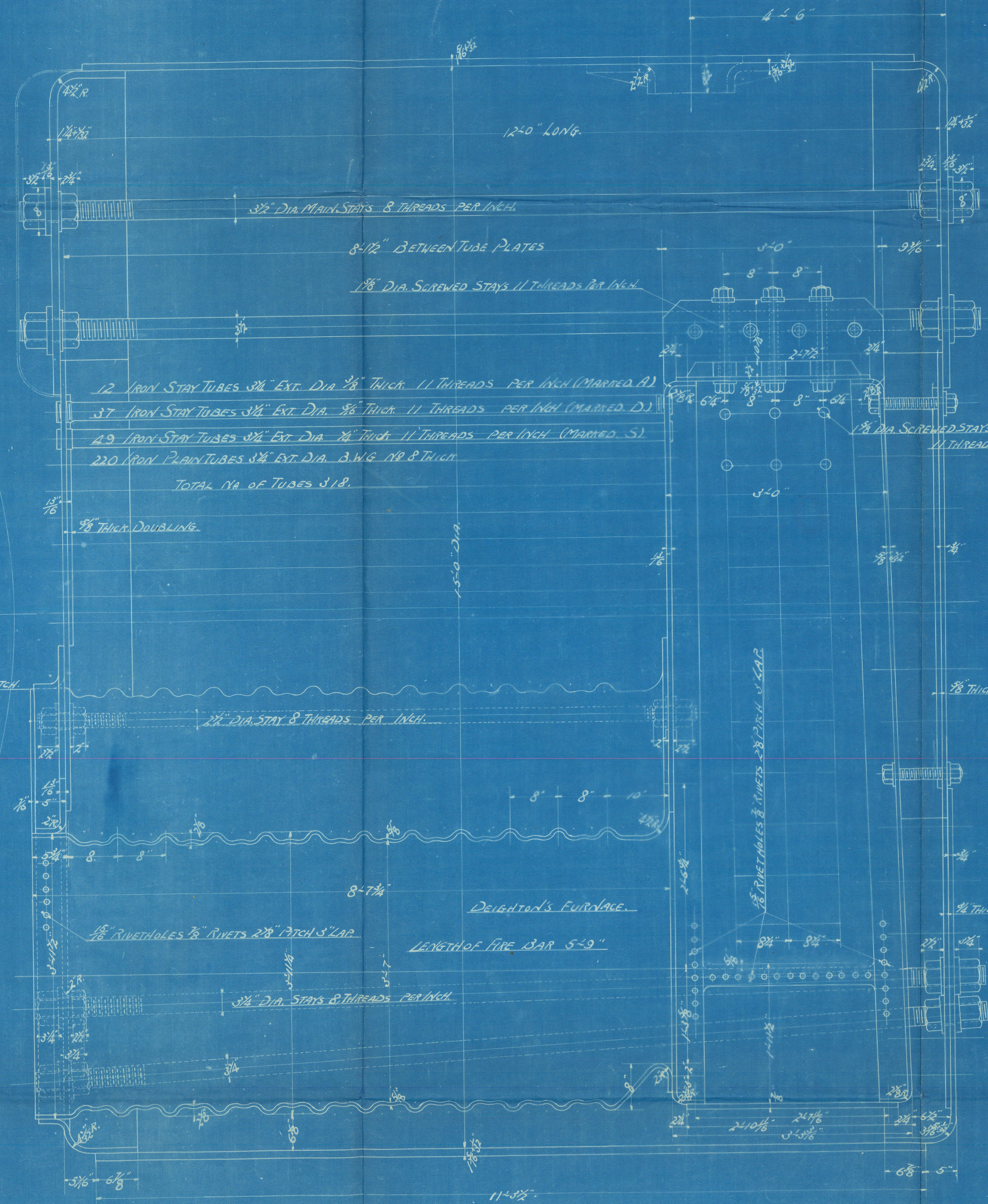
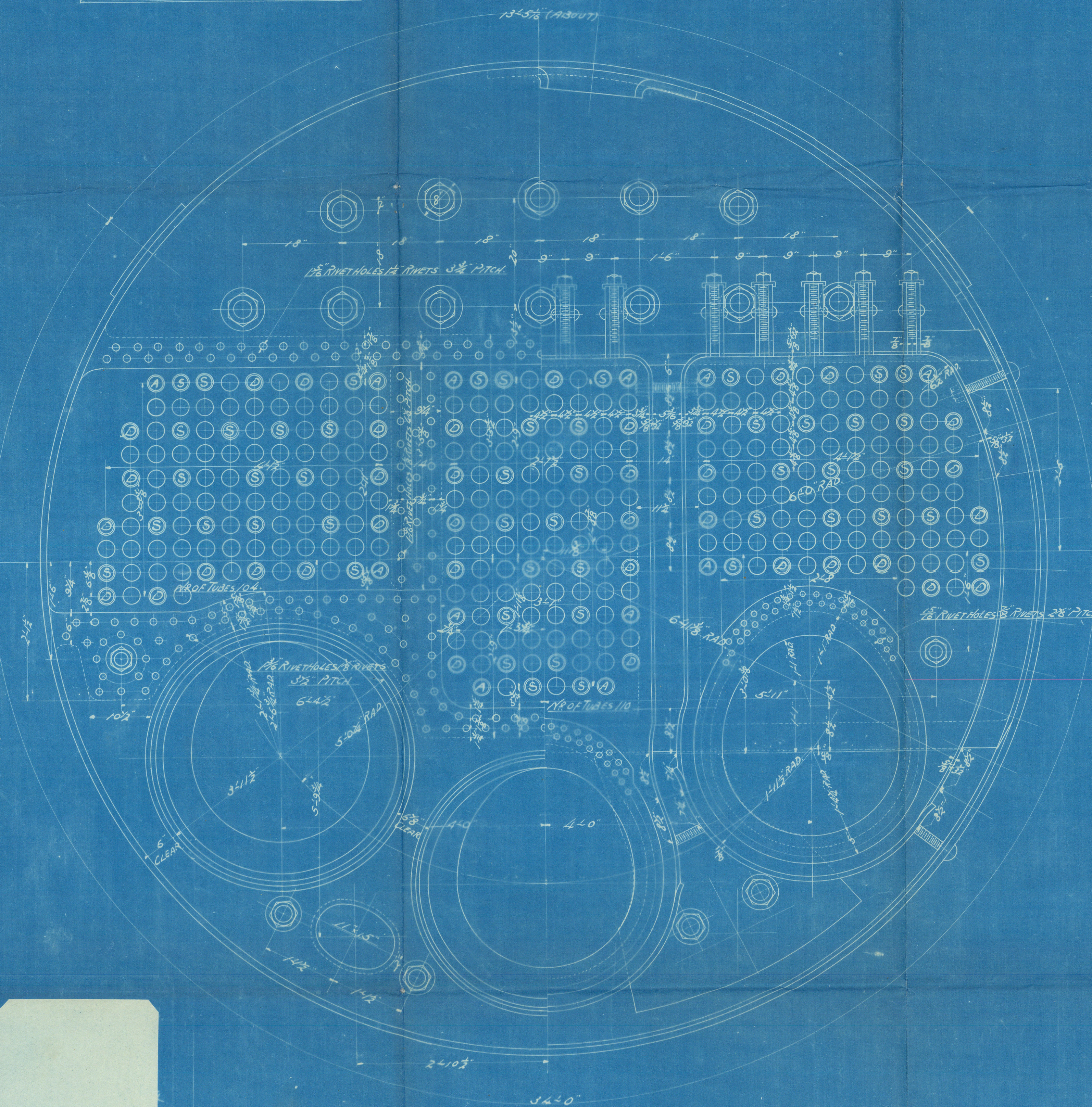
PARTICULARS (ONE BOILER)	
HEATING SURFACE OF TUBES	2198.2
COMB. C.	275.6
FURNACES	169.2
TOTAL HEATING SURFACE	2643.0
TOTAL GRATE AREA	61.8
1/4"	42.7



OUTSIDE STRAP 1/8"
INSIDE STRAP 1/8"
1/8" RIVET HOLES 1/8" RIVETS 1/8" PITCH



SCALE 3 INCH TO ONE FOOT.



13710

Osaka Iron Works Co.

Nº 882

MAIN CENTER BOILER ALTERATION

Amazon Maru.

Kobe Ryok 2550

RETAIN



© 2021

Lloyd's Register
Foundation