

2061

BOILER FOR MESSRS ISAAC J. ABDELA & MITCHELL LTD

ONE THUS

186 IRON TUBES (INCLUDING 62 STAY TUBES) 3 1/4" EXT. DIA. x 7' - 3 1/2" LONG.

HEATING SURFACE OF TUBES = 1120 sq ft

" " FURNACES ETC. = 323 sq ft

" " TOTAL = 1443 sq ft

TOTAL GRATE AREA (5' - 3" BARS) = 48.56 sq ft

WORKING PRESSURE 180 LBS. PER SQ IN

TEST " 360 " " "

TO LLOYD'S REQUIREMENTS

186518



Approval noted

MANHOLE IN SHELL 16" x 12" WITH M'NEIL'S PATENT DOOR & COMPENSATING RING.

WASHERS 8" DIA. x 3/4" THICK.

RIVET HOLES 1 1/2" DIA. x 3 1/2" PITCH

41 PLAIN TUBES 2" STAY " 62 TOTAL

42 PLAIN TUBES 2" STAY " 62 TOTAL

8" DIA. WASHER 3/4" THICK.

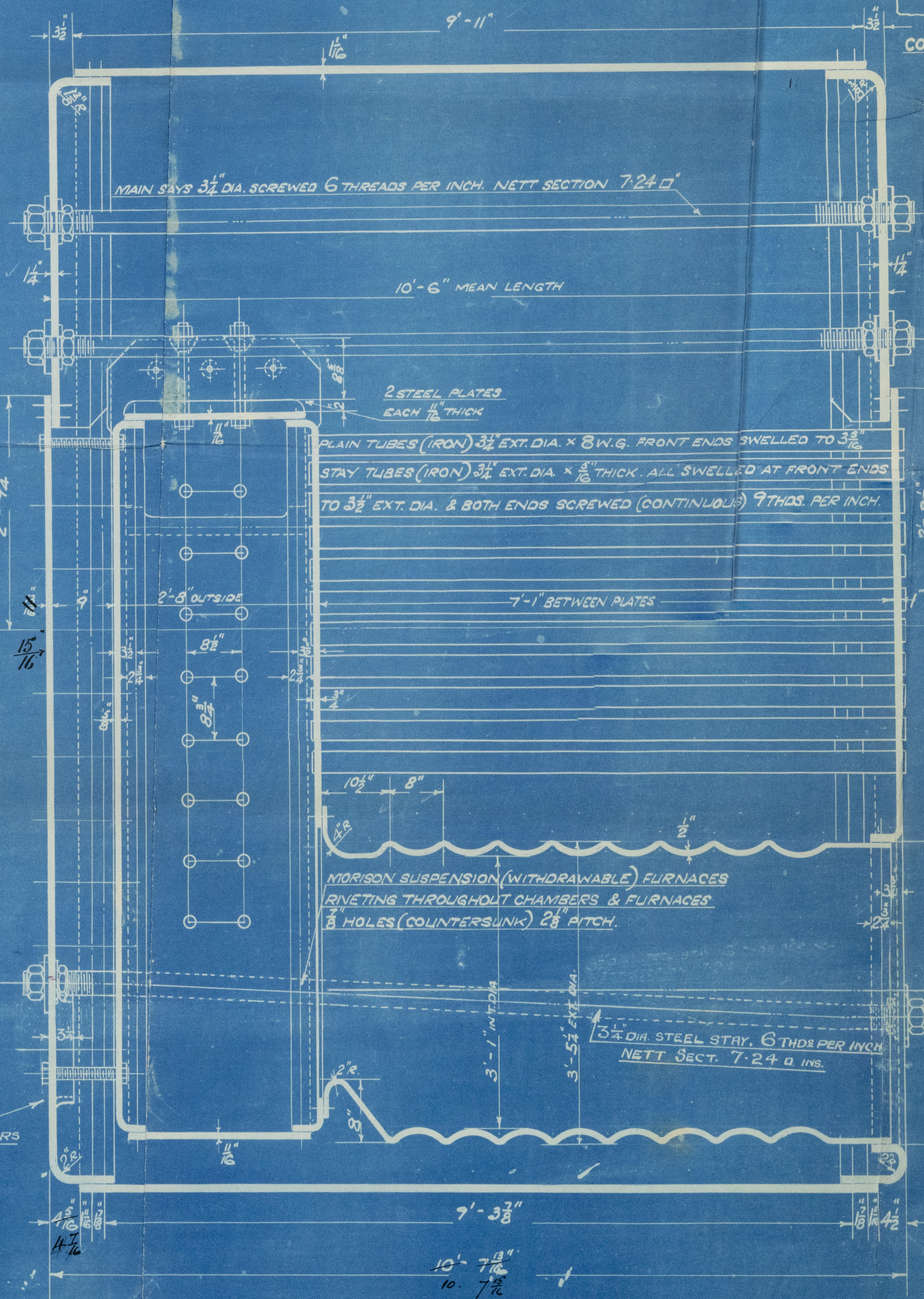
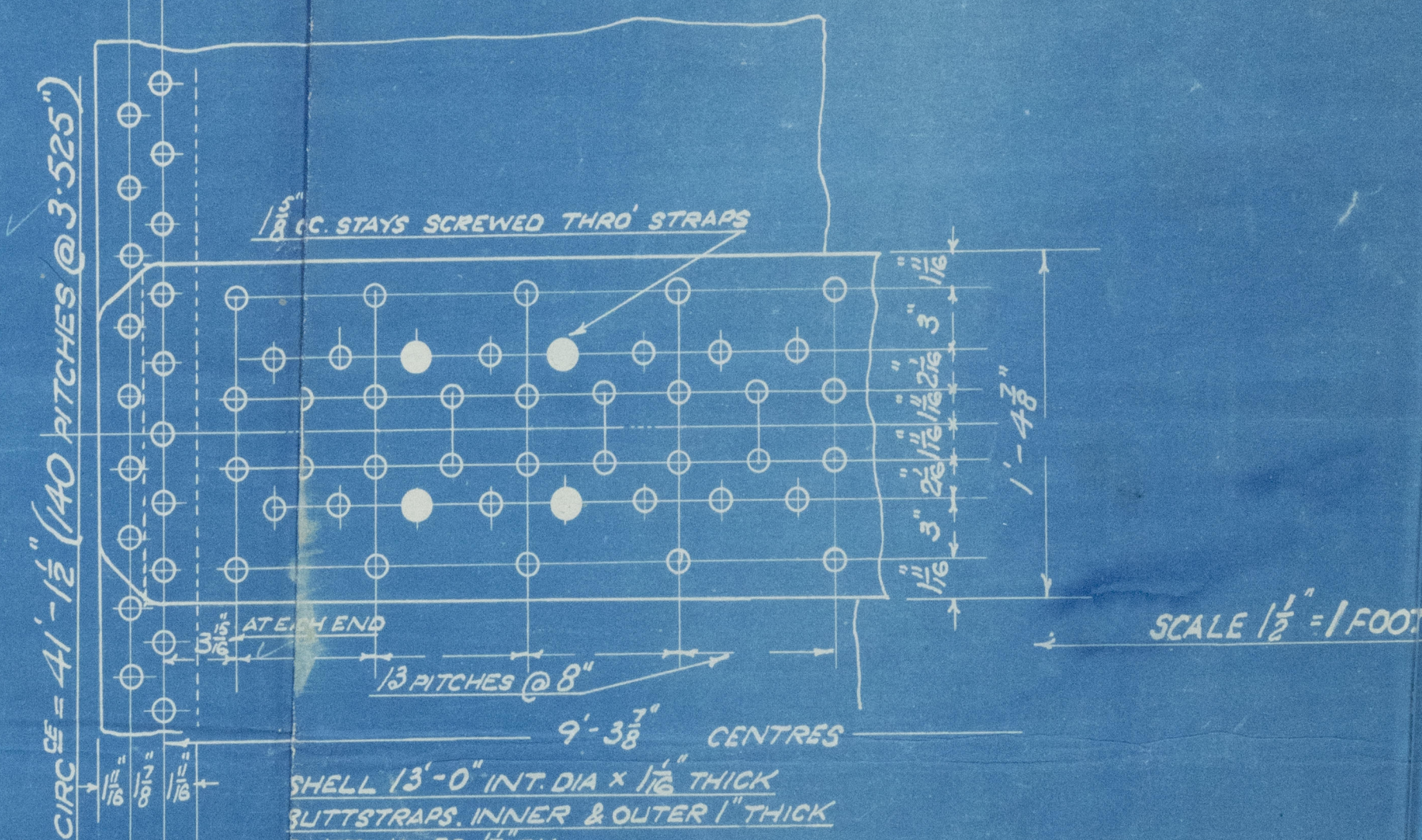
TWO MANHOLES 16" x 12" IN BACK OF BOILER WITH FLAT STEEL PLATE DOORS RECESSED FOR GASKETS.

13'-0" INT. DIA.

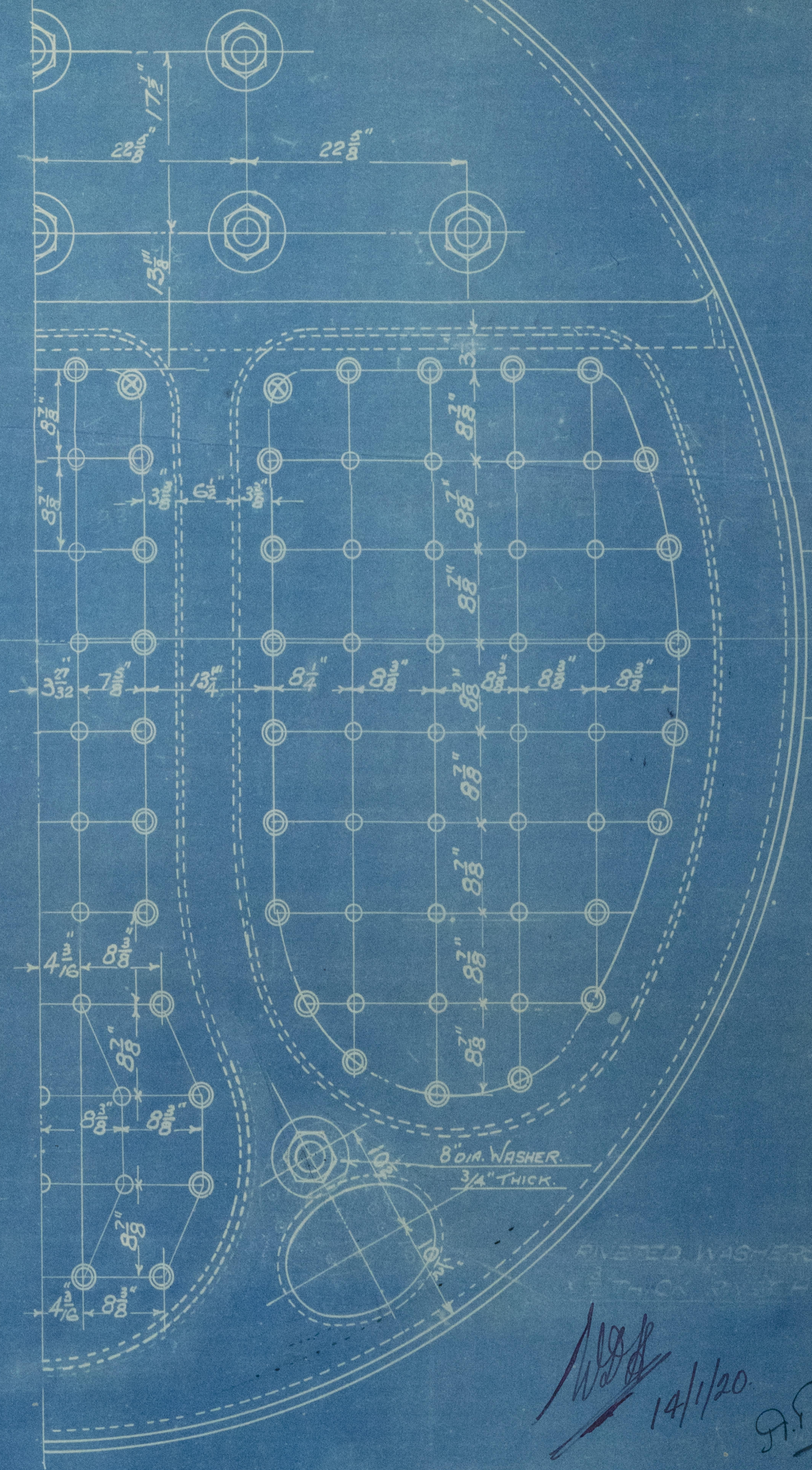
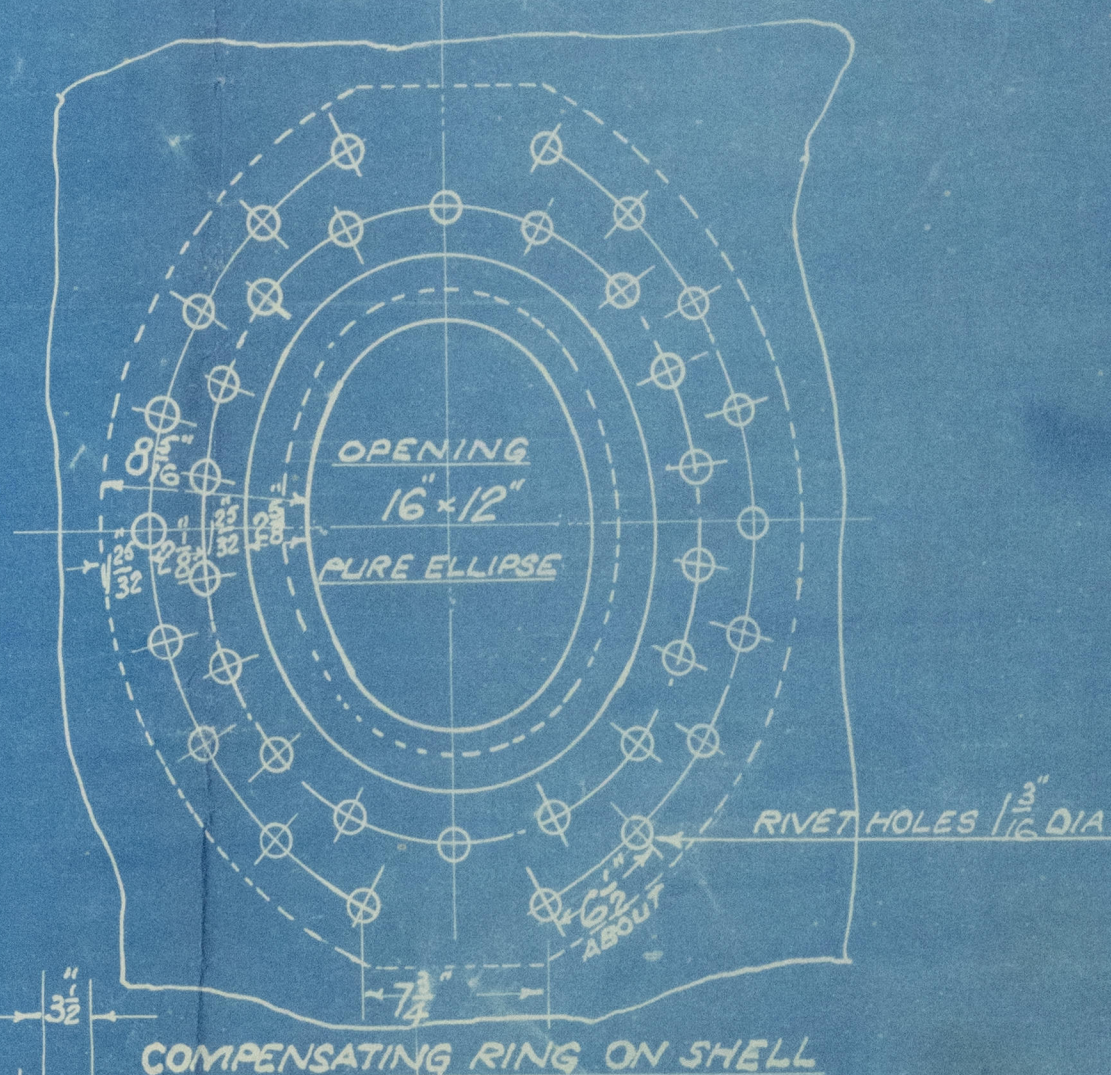
MATERIAL

FOR	OF	M.T.S.
SHELL STRAPS, GIRDERS & MAIN STAYS	STEEL	28-32 TONS
BOILER ENDS, CHAMBERS, FURNACES & SCREWED STAYS	"	26 "30 "
RIVET BARS	"	26 "30 "

SCALE 1" = ONE FOOT



15/1/20 BOILER N° 2061



ALL COMBUSTION CHAMBER STAYS SCREWED THROUGH PLATES AND (EXCEPT AT SHELL OR WHERE OTHERWISE NOTED) NUTTED

○ THOSE MARKED THUS TO BE 1 1/2" DIA. NETT SECTION 1.73 sq in

○ " " " " 1 1/4" " " 2.03 sq in

○ " " " " 1 3/8" " " 2.36 sq in

ALL SCREWED 9 THREADS PER INCH.

J.D. 14/1/20 R.R. 52

W 643-0154



Cammell Laird & Co.

Blr No 2061.

for

Abdela Mitchell,

No. 458.

S.S. "Coriston"

LIVERPOOL

Report No. 81929.

RETAIN

© 2021

W693-0154



Lloyd's Register  
Foundation