

NEG. NO 11137

WORKING PRESSURE 180 LBS PER SQ INCH - TO LLOYDS SURVEY.

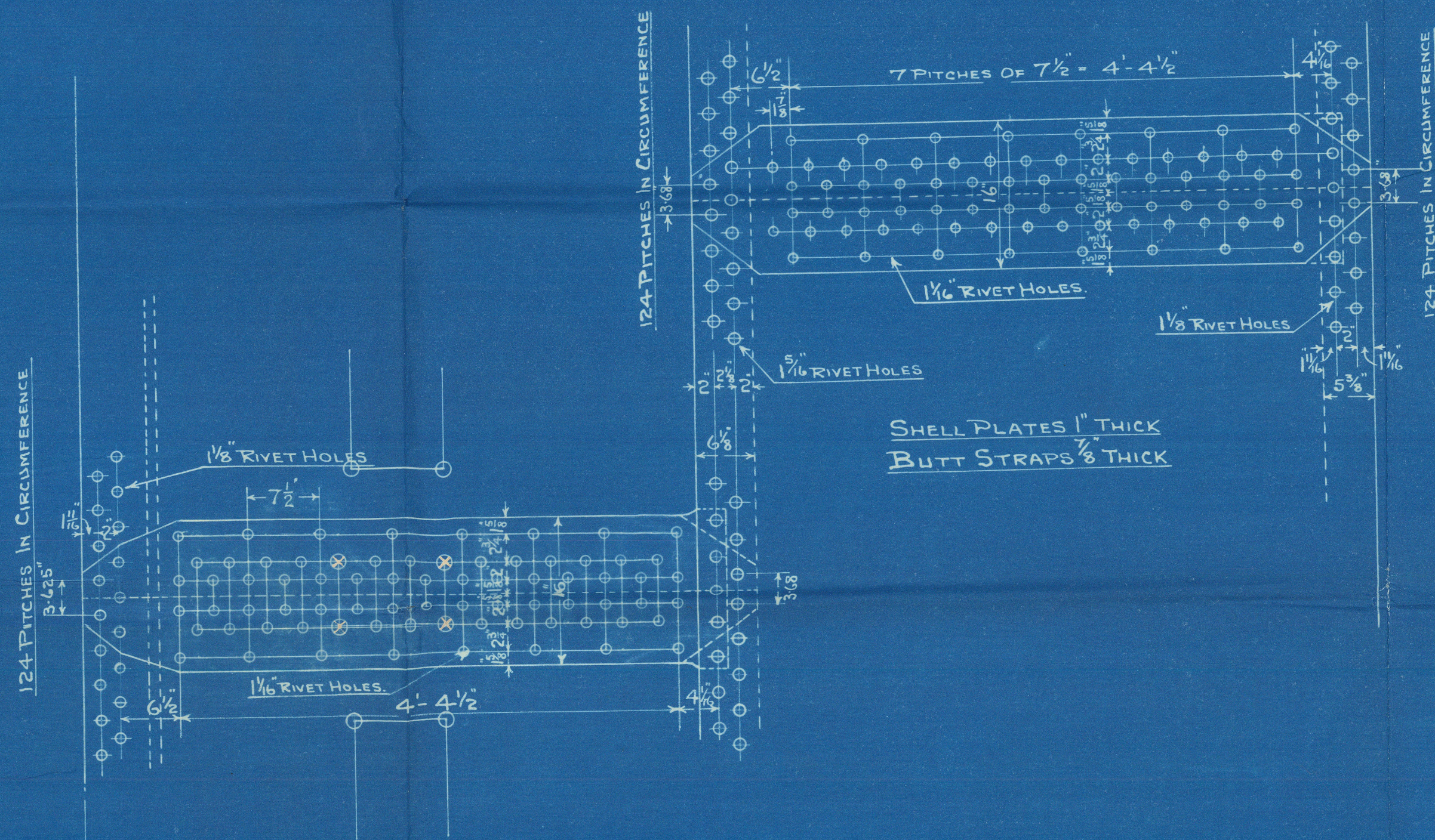
TO BE TESTED TO 320 LBS PER SQ INCH

SCALE 1" = 1 FOOT.

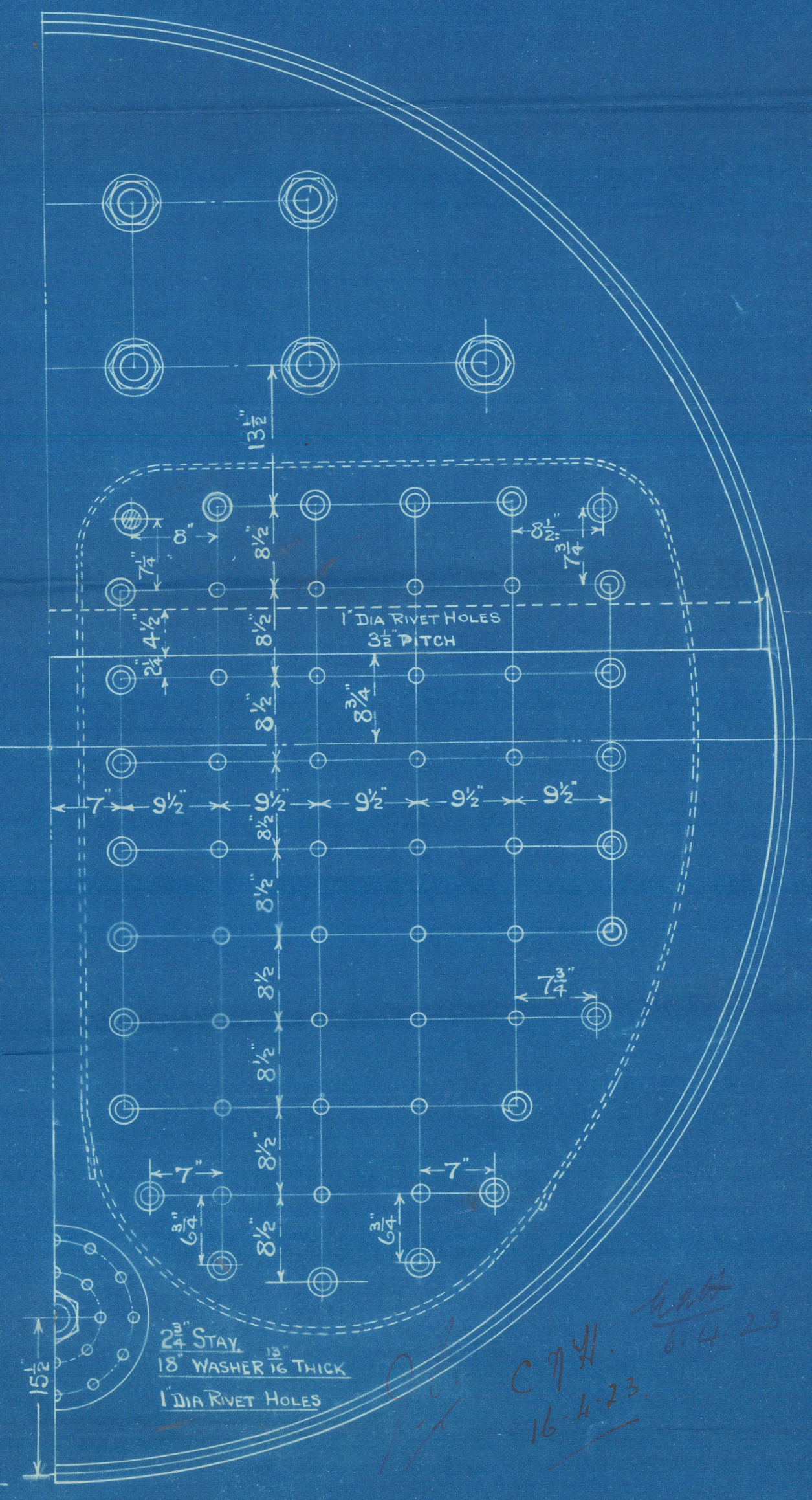
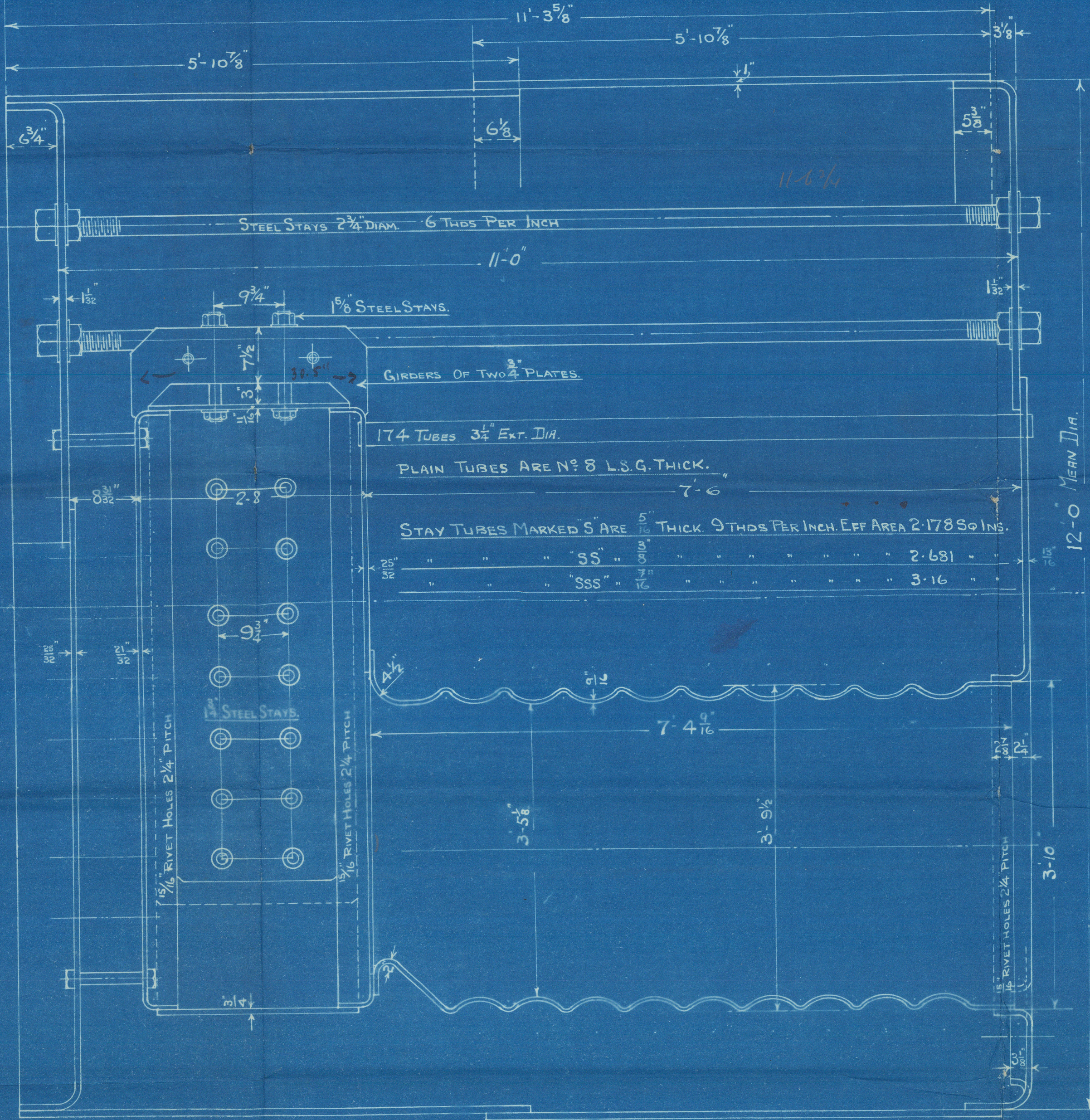
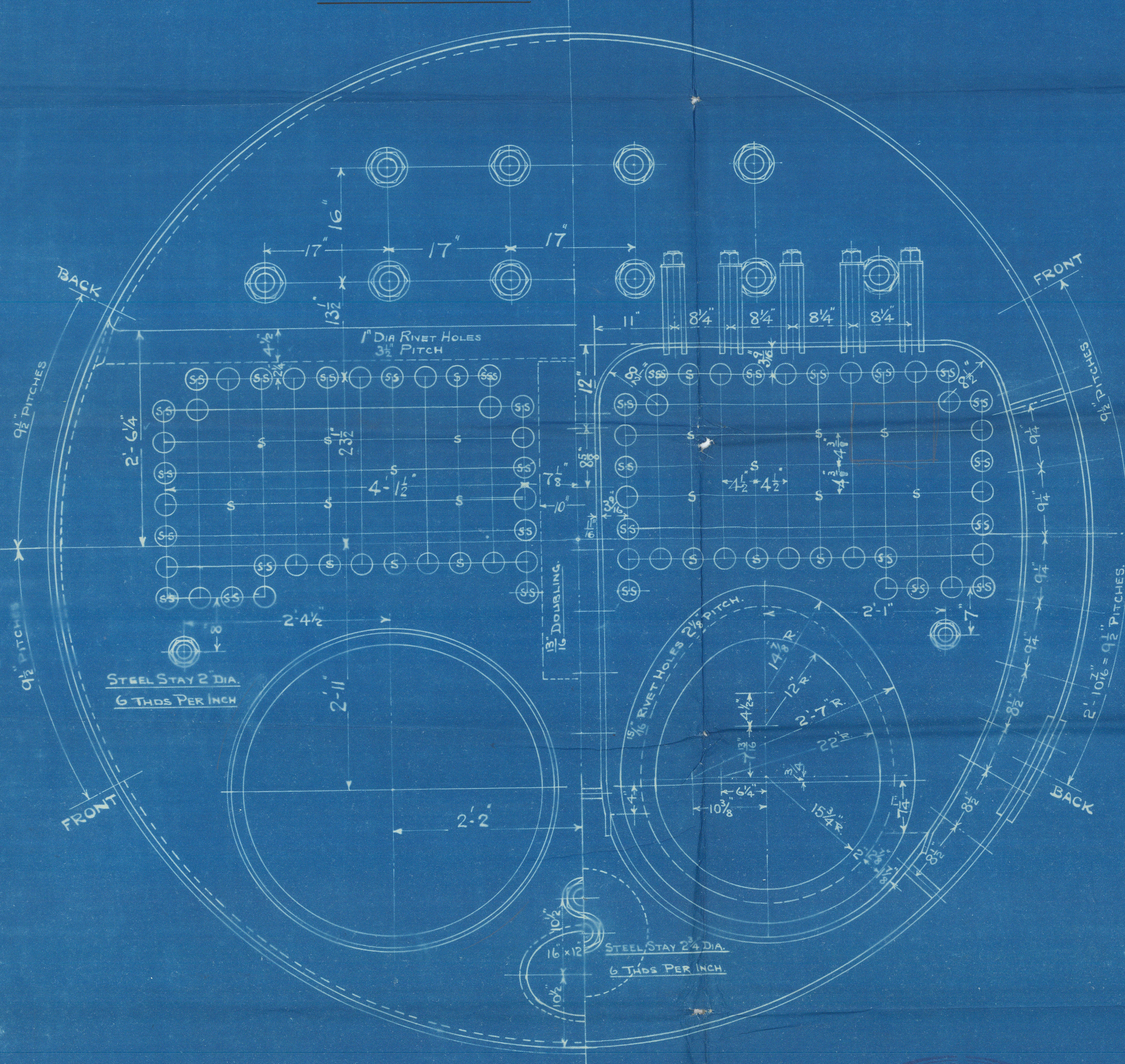
17423

HEATING SURFACE OF TUBES	111056 FT ²
" " " FURNACES	93 "
" " " C.C. SIDES	81 "
" " " BACK	44 "
" " " BACK TUBE PLATE	29 "
" " " FRONT	29 "
TOTAL HEATING SURFACE	1362
GRATE AREA WITH 5'-6" BARS	38 "
RATIO	1:36.4
SMOKE THRO' TUBES	

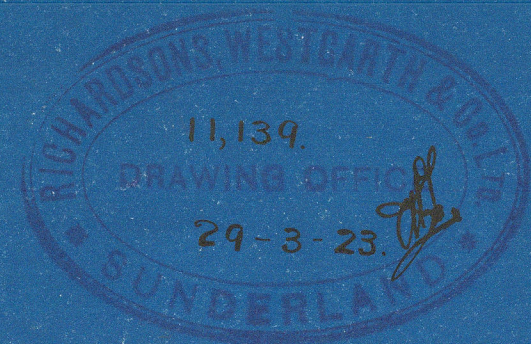
TENSILE STRENGTH OF SHELL PLATES & BUTT STRAPS	28 TO 32 TONS
" " " GIRDER " " LONGITUDINAL STAYS	28 " 32 "
" " " OTHER " " SCREW STAYS	26 " 30 "
" " " RIVET BARS	26 " 30 "
ALL PLATES & STAYS OF STEEL	
TUBES OF WROGHT IRON	
ALL RIVET HOLES DRILLED IN PLACE	



16" x 12" MANHOLE IN SHELL, COMPENSATING RING 32" x 28" x 1"
POSITION NOT YET FIXED.



BOILER N° H. 2643.B
N° OFF 1.



STEEL SCREWED STAYS				
POSITION	MARK	DIA	THDS PER INCH	REMARKS
C.C. BACK & TOP	0	1 1/8	9	1.73 NUTTED IN C.C. ONLY
" SIDES	1	1 1/4	9	2.03 " " " "
BACK MARGINAL	2	1 3/8	9	2.03 " " " "
" CORNER	3	2	9	2.71 " " " "

W. G. 11-13-23

RICHARD^{SN} WESTGARTH

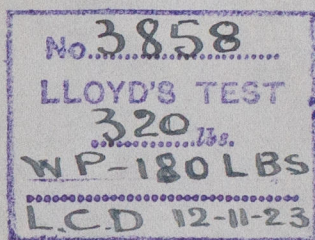
2643 B

FOR

PICKERSGILL'S 210

AUXILIARY BOILER

15E
WP/80



S.S. "Ghisléhen"

SUNDERLAND RPT. NO. 28857



© 2021

Lloyd's Register
Foundation

W693-0041