

15/10/04

AUXILIARY BOILER

SCALE 1" = 1 FOOT.

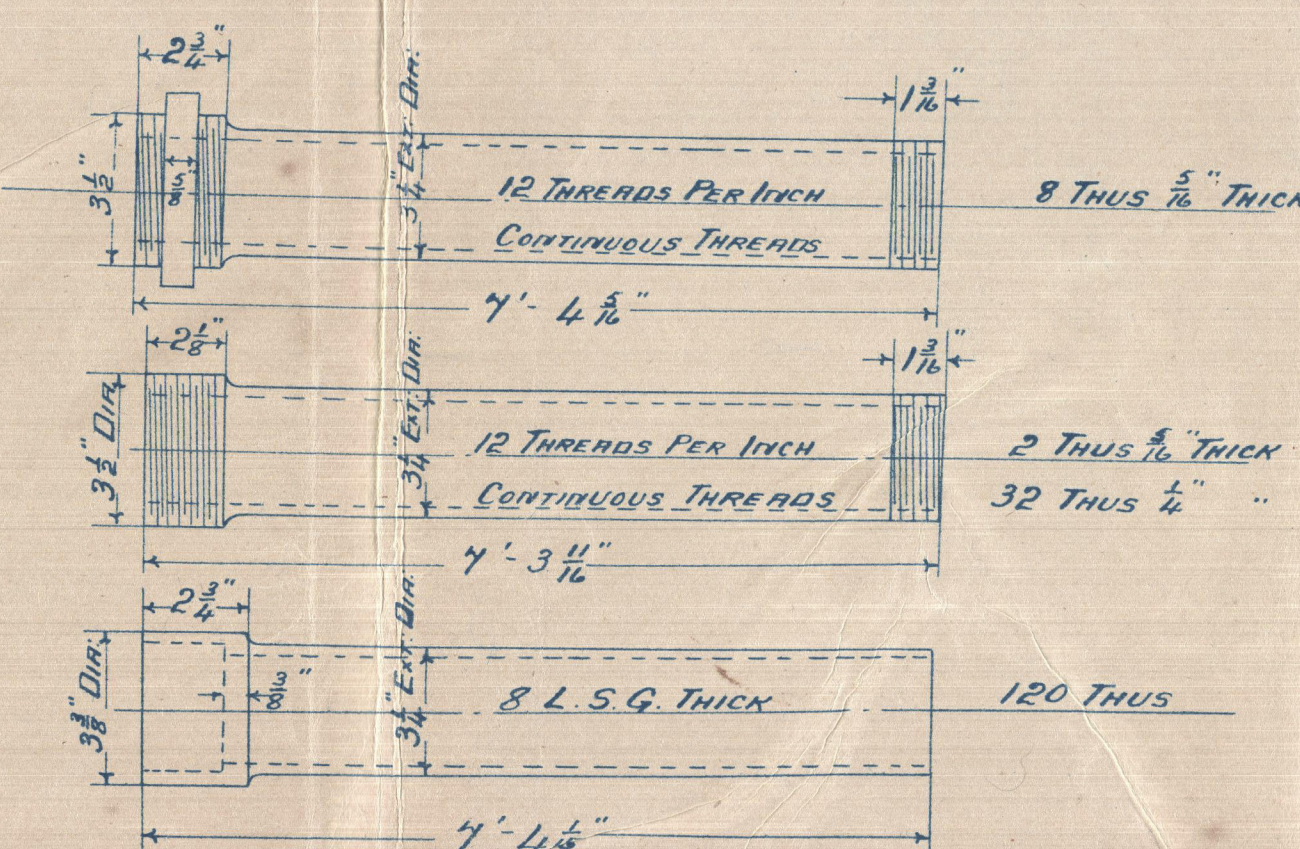
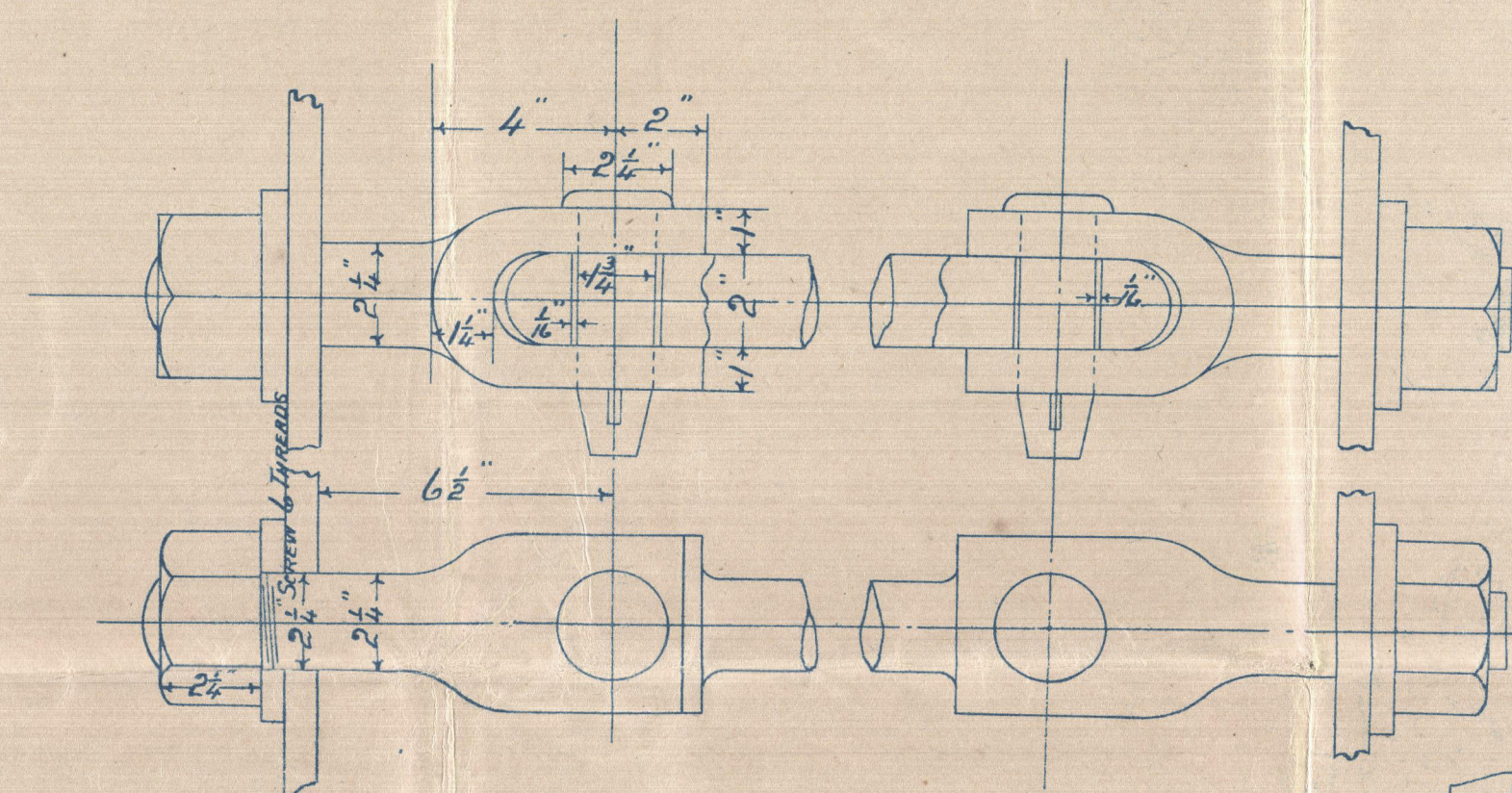
WORKING PRESSURE 180 LBS TEST PRESSURE 360 LBS PER SQ. INCH.

ALL MATERIAL OF STEEL EXCEPT WHERE OTHERWISE SHOWN

MINIMUM TENSILE STRENGTH OF SHELL PLATING 28 TONS PER SQ. INCH.

ALL HOLES DRILLED IN PLACE AFTER PLATES ARE BENT

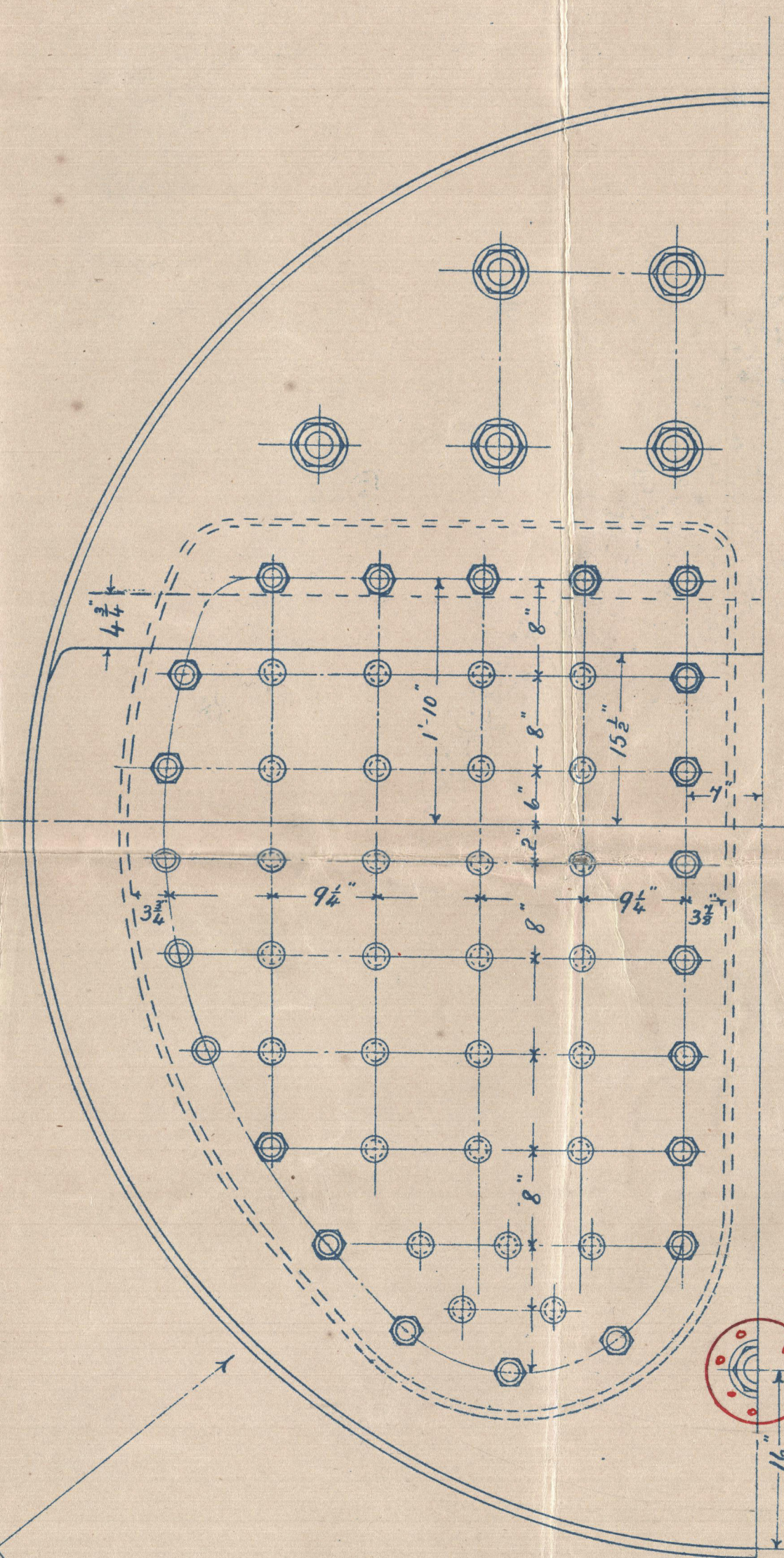
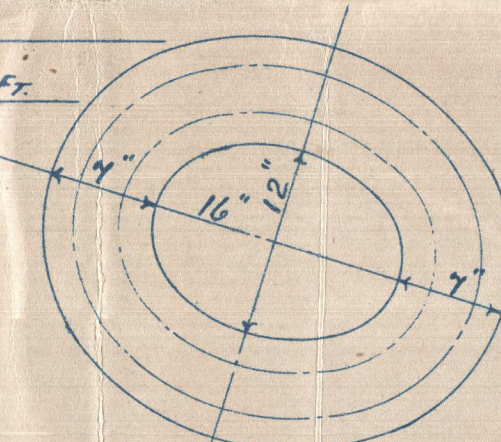
TO LLOYDS REQUIREMENTS.




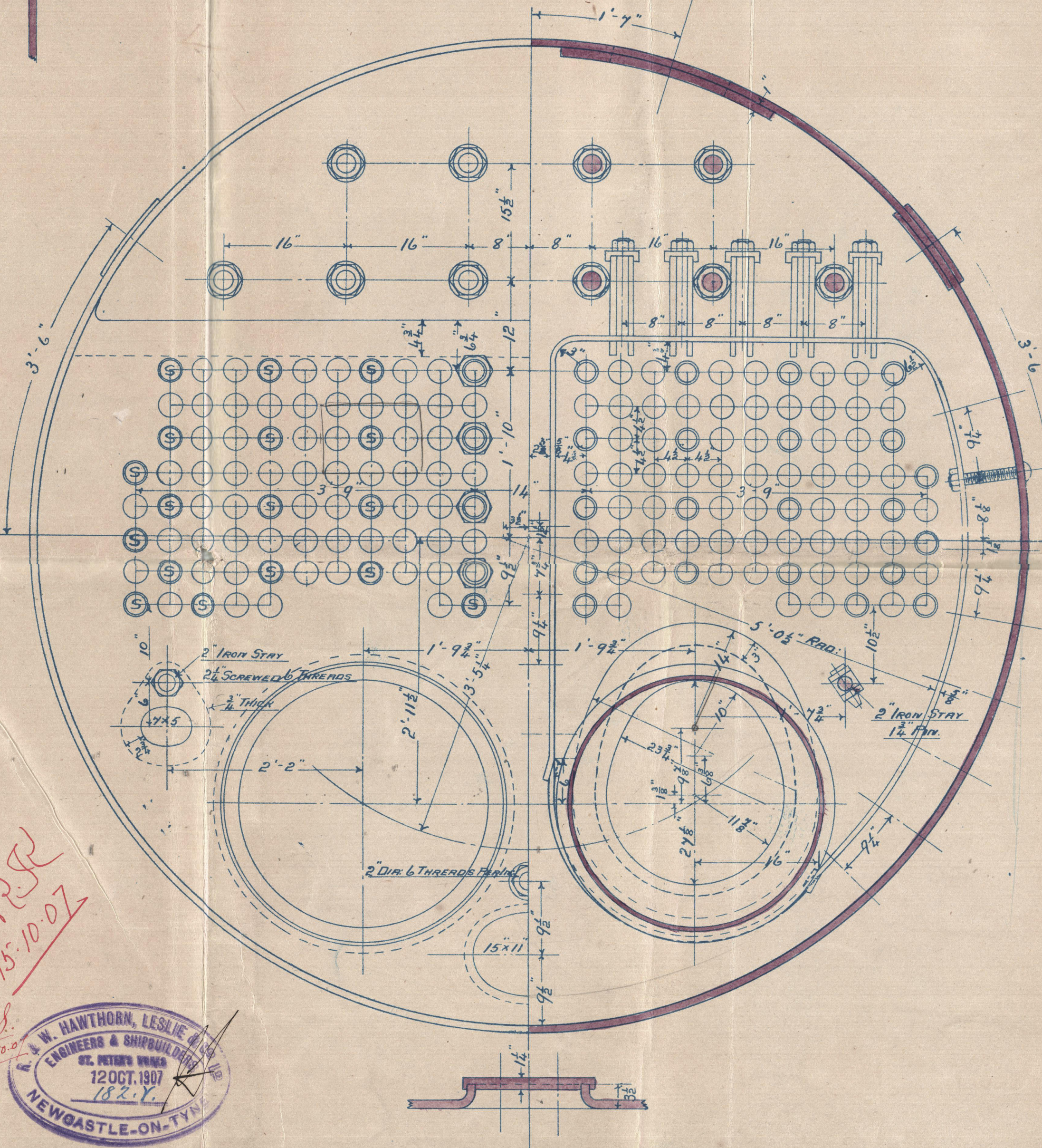
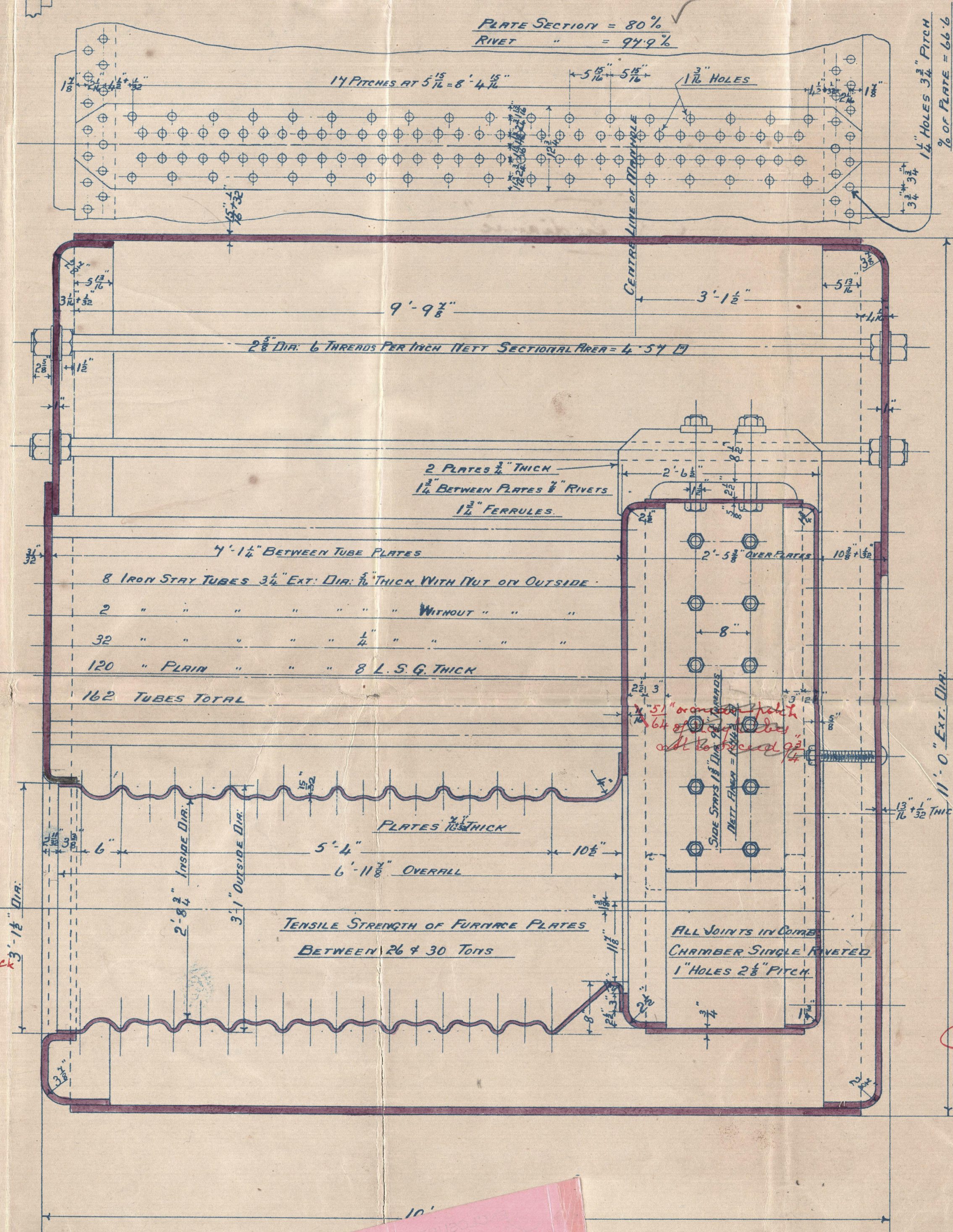
TUBES AS
ORDERED
TO BE LEFT LONG FOR RE-DRIVING UP
& RE-BEADING.

HEATING SURFACE $\#$			
TUBES	974	GRATE AREA =	30 $\#$ ON 5' 6" BAR
FURNACES	94	TUBE " =	73 $\#$
COMBUSTION CHAMBER	160	STEAM CAPACITY =	184 $\frac{1}{2}$ CUBIC FT.

1234 #
F.T.P. = 25
1259 # TOTAL




 Riveted water $\frac{2\frac{1}{2}}{32}$ inch
 not less than
 $8\frac{3}{4}$ dia



INTERMEDIATE STAYS $1\frac{1}{8}"$ DIA. $9\frac{1}{2}"$ THREADS NET AREA = 1.742 □
 BOUNDING ROWS $1\frac{1}{8}"$ " " " " " = 1.889 □
 ALL STAYS MUTED INSIDE
 BOUNDING ROWS MUTED OUTSIDE

15.10.07



DRAWING N° 17125

ORDER № 3633
ENGINE № 2744

W69-0139^{2/2}

ENCLOSURE TO

*Lloyds
for Approval*

R. & W. HAWTHORN, LESLIE & CO., LTD.,
T. PETER'S WORKS, NEWCASTLE-ON-TYNE.

WG9-0139 1/2

Newcastle on Tyne
Hawthorn Leslie & Co

S-S-423

Aux[?] Boiler

S-S-Indianic
Newcastle-on-Tyne

No 55017

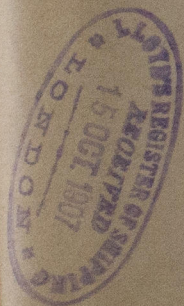
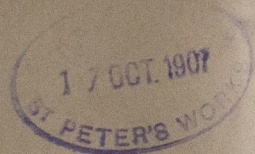
No 7673

Lloyd's Bank

360 lbs.

J. R

30-1-08



W69-0139



© 2020

Lloyd's Register
Foundation