

27/12/22

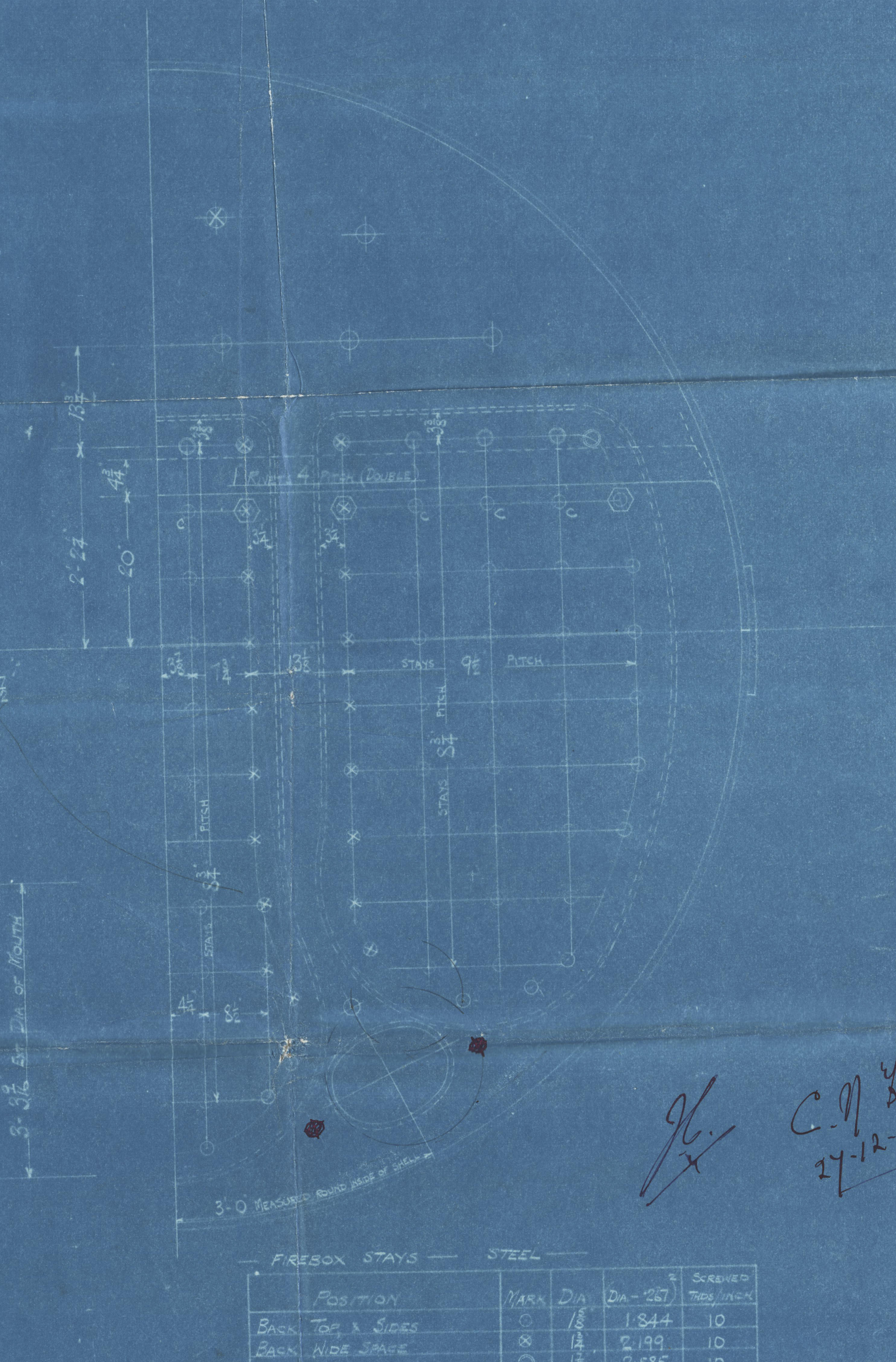
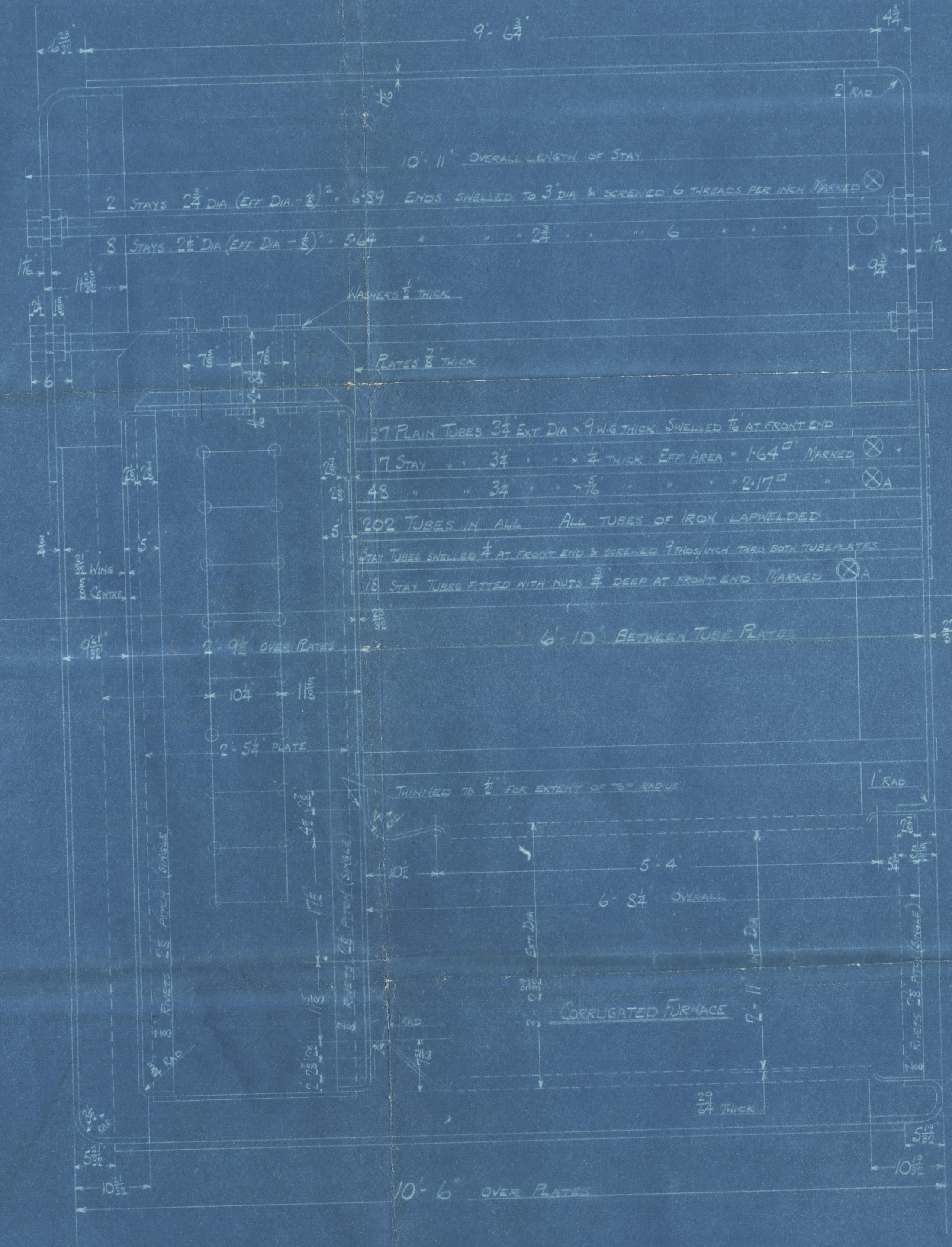
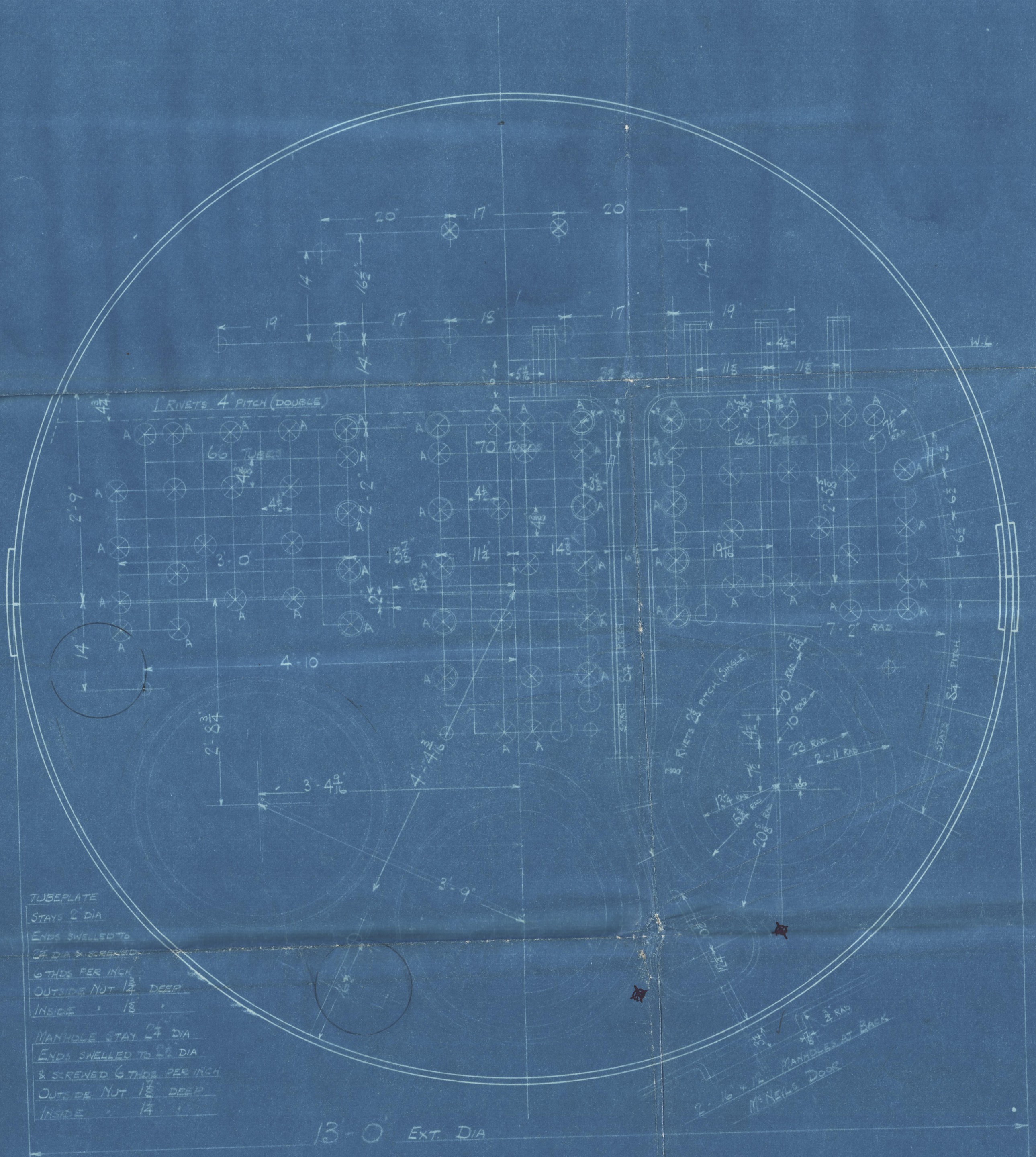
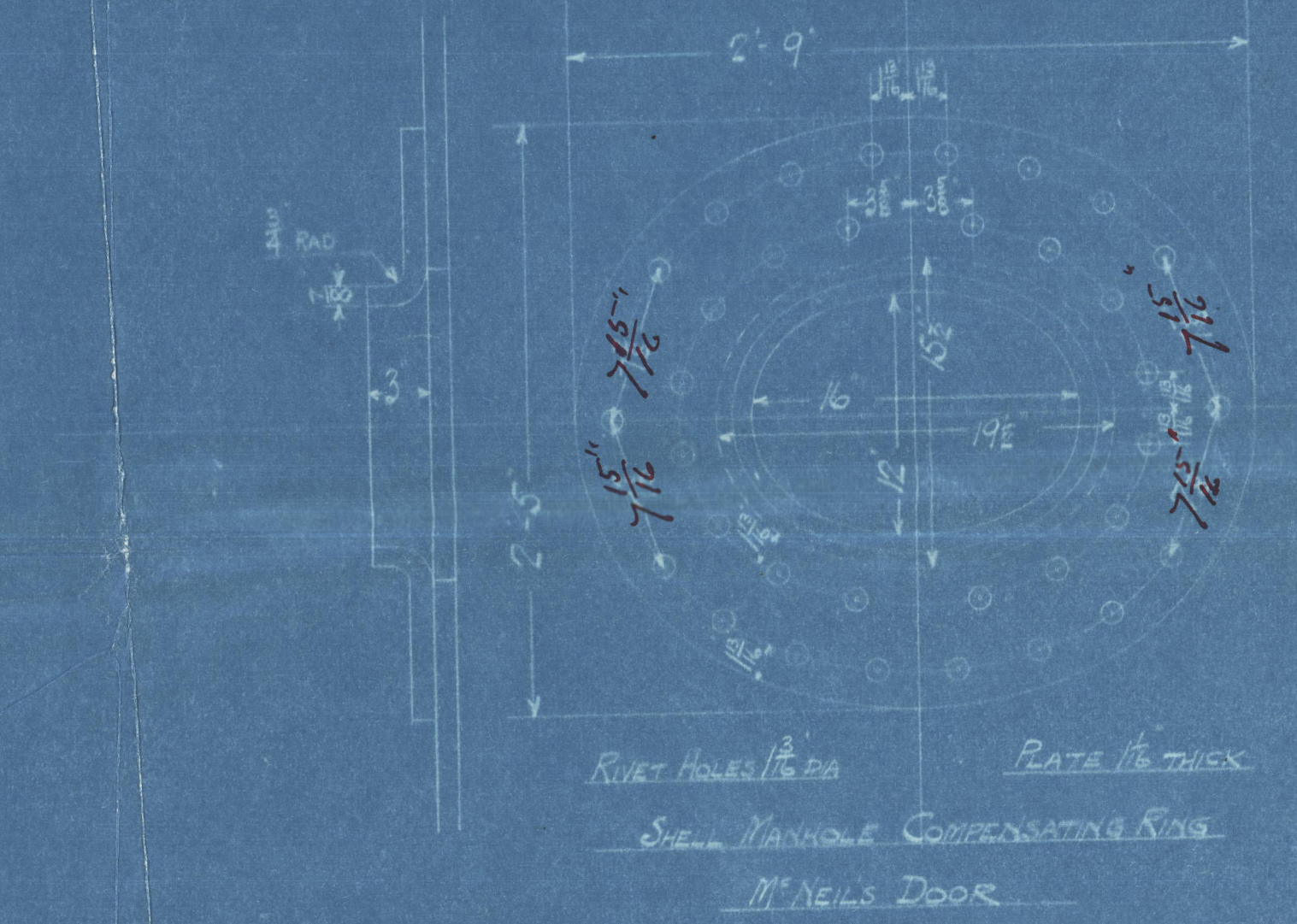
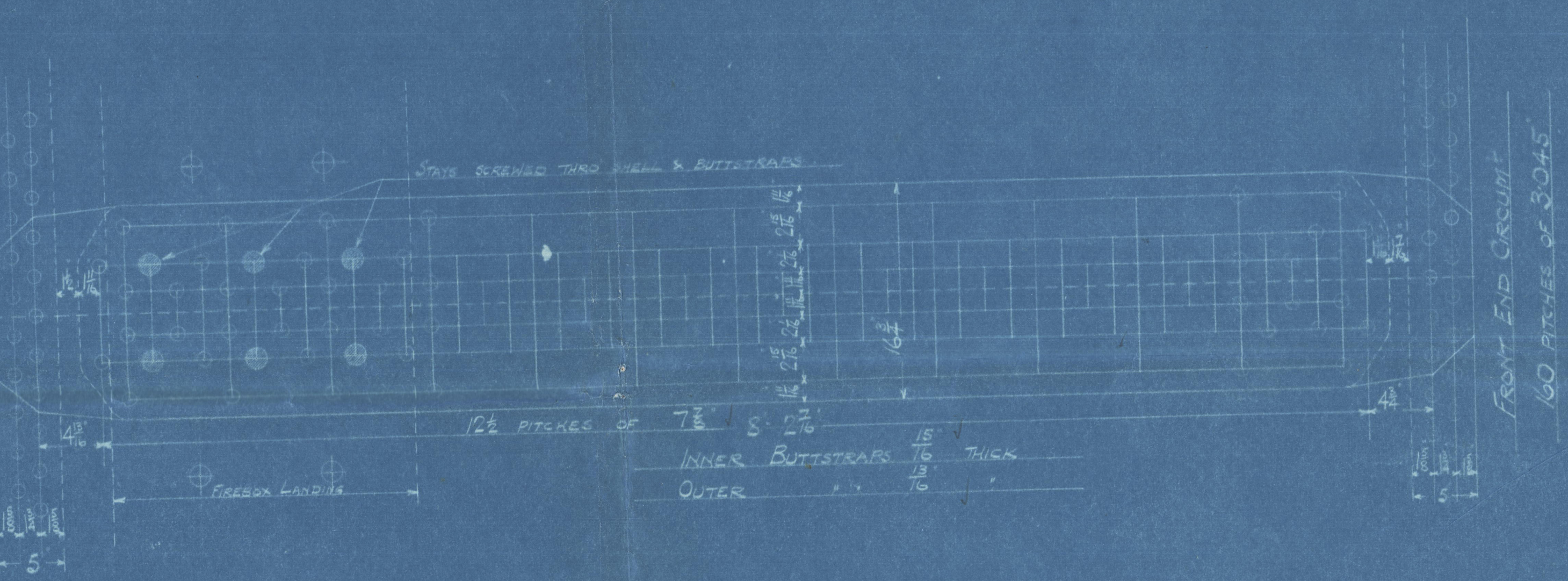
SURFACES		ONE END	2 ENDS
TUBES		1175 #	1350 #
FIREBOX TOP AND SIDES		120	240
BACK		57	114
TUBEPLATE		38	76
FURNACES		110	220
TOTAL HEATING SURFACE		1500 #	3000 #
GRATE AREA (6" G BARS)		45	90
TUBE AREA		9.07	18.14
WATER SPACE		116	232
STEAM SPACE		315 #	630 #
GRATE AREA	HEATING SURFACE	1.31-25	
	TUBE	1.04-5	
	AREA	5.21	1.1
	WATER	2.42	
	STEAM SPACE	1.663	
% BOILER ABOVE FIREBOX		25.1	
WEIGHT OF WATER		TONS	TONS

LIMITS OF TENSILE STRENGTH & MATERIAL	
SWELL BUTTSTRAPS AND GIRDERS	28 TO 32 TONS
OTHER PLATES	26 TO 30
FURNACES	26 TO 30
MAIN STAYS	28 TO 32
SCREENED STAYS	26 TO 30
RISET BARS	26 TO 30

LIMITS OF TENSILE STRENGTH & MATERIAL	
SWELL BUTTSTRAPS AND GIRDERS	28 TO 32 TONS
OTHER PLATES	26 TO 30
FURNACES	26 TO 30
MAIN STAYS	28 TO 32
SCREENED STAYS	26 TO 30
RISET BARS	26 TO 30

ALL RIVET HOLES DRILLED IN PLACE
MAIN STAYS SHELLED AT ENDS BY
HYDRAULIC PRESSURE & ANNEALED

BACK END CIRCUMF
160 PITCHES OF 3.045"



MAIN BOILER
2 OFF
CONT NO 775

WORKING PRESSURE 180 LBS PER SQUARE INCH
TO PASS LLOYD'S SURVEY
SCALE ONE INCH = ONE FOOT

FIREBOX STAYS - STEEL	
POSITION	NO. DIA. DA-287
BACK TOP & SIDES	8 1/8 1.844
BACK SIDE PLATE	8 1/8 2.199
TOP CORNER	8 1/8 2.585
CORNER	8 1/8 3.003

ALL FIREBOX STAYS SHELLED THRO BOTH PLATES AND NOT FITTED AT EACH END EXCEPT STAYS MARKED S ON BACK BOTTOM END WHICH PROJECT 3" AND ARE CALLED.
ALL 1/2" NUTS 3" DEEP EXCEPT ON GIRDERS TOP WHERE THE OUTSIDE NUTS ARE 1/2" DEEP.
ALL 1/2" & 2" NUTS 1" DEEP.

96.
C. 77.
17-12-22.



OT 29498 A

W687-0177(22)

D. Rowan Esq. Ad.

N^o 775

2 J.E. Rollers.

Wt. 180 lbs per sq

Mark on Rollers N^o 775

N^o 16238

LLOYD'S TEST

320 LBS.

W.P. 180 LBS.

H.M.C. 20.4.23

"Kouini"

Messrs Rps No 44066

RETAINED



© 2020

Lloyd's Register
Approved 27.12.22
Foundation

W687-0177 (212)

W687-0177 (1/2)

© 2020

From DAVID ROWAN & CO., Ltd., Glasgow.

ENCLOSURE

FOR MESSRS.

Lloyd's Register of Shipping