

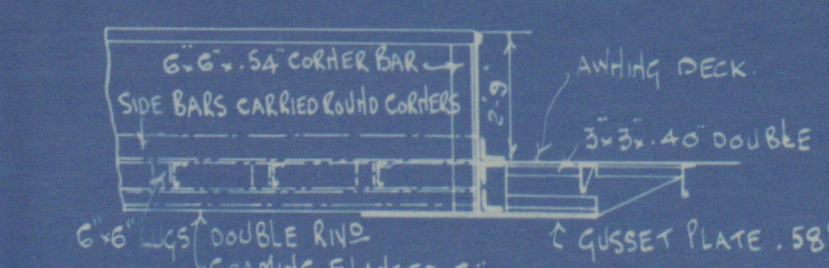
ARRANGEMENT OF STRENGTHENED HATCH COAMINGS, BEAMS &c.
TO COMPENSATE FOR OMISSION OF COAMING STANCHIONS.

	HATCH END BEAMS	SIDE COAMINGS &c.	SIDE COAMINGS &c.
	ANCHOR DECK	ANCHOR DECK	ANCHOR DECK
	PLATE 15.70	PLATE 15.80	PLATE 15.80
30" HATCHWAY	ANGLES 6-6-70	ANGLES 6-6-70	ANGLES 6-6-70
	PLATE 15.60	PLATE 15.70	PLATE 15.70
28" HATCHWAY	ANGLES 6-6-60	ANGLES 6-6-60	ANGLES 6-6-60
	PLATE 15.50	PLATE 15.60	PLATE 15.60
15" HATCHWAY	ANGLES 6-6-50	ANGLES 6-6-50	ANGLES 6-6-50

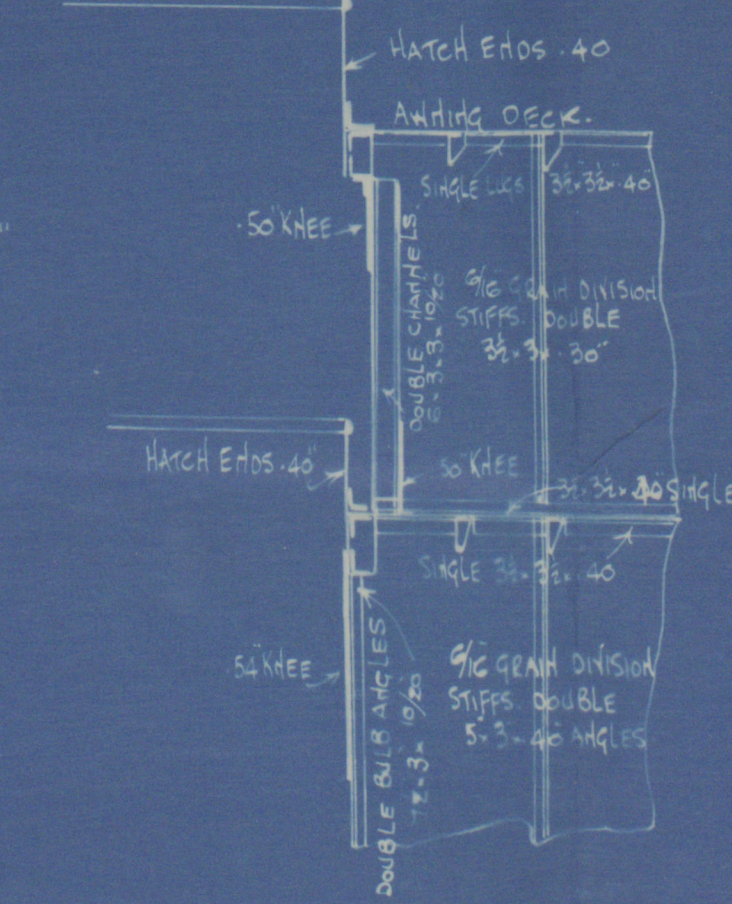
PROFILE & DECK PLANS.

SS HURTURETON.
DIMENSIONS: 450' x 66'0" x 26'6" MLO VDR
CLASSED AT LLOYDS 100A1, 'STEEL ANCHOR DECK'
SCALE 1/8" = ONE FOOT

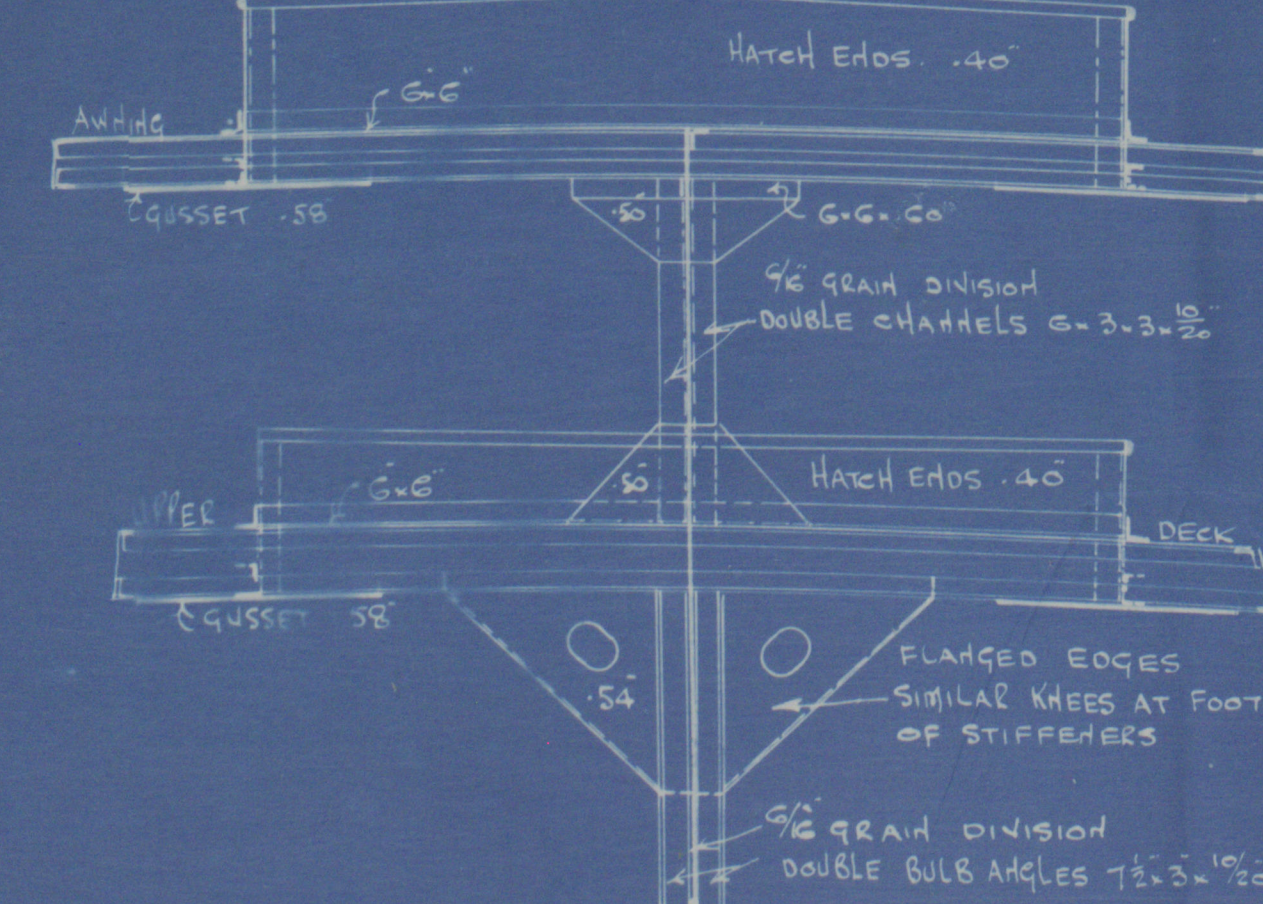
ELEVATION OF HATCH SIDES.



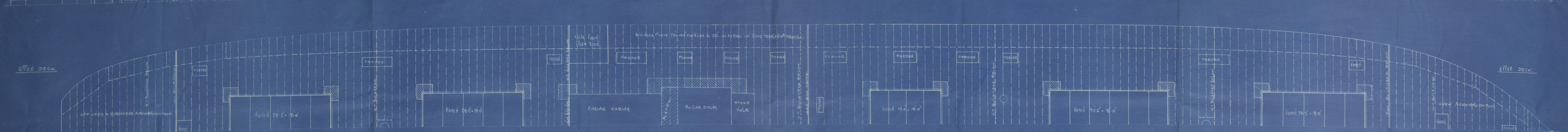
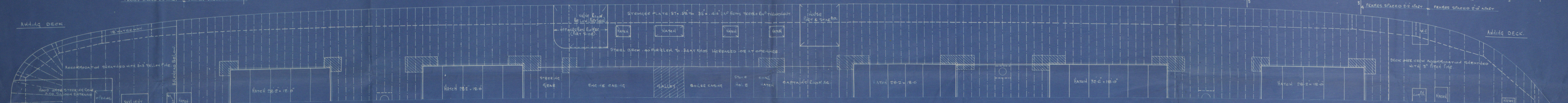
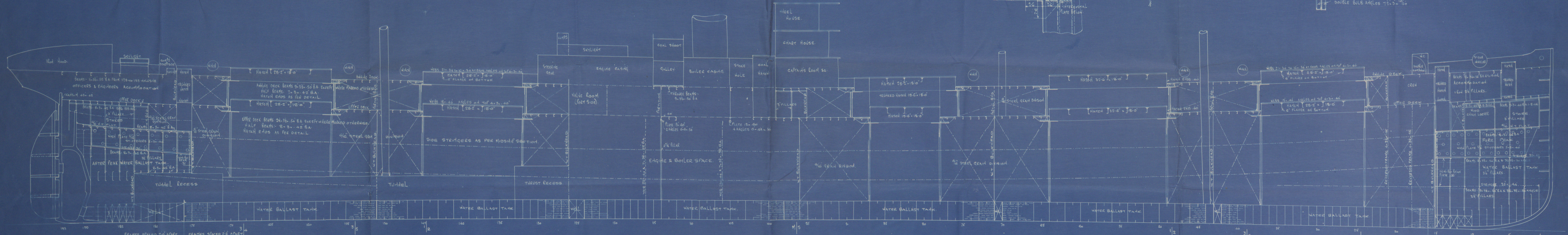
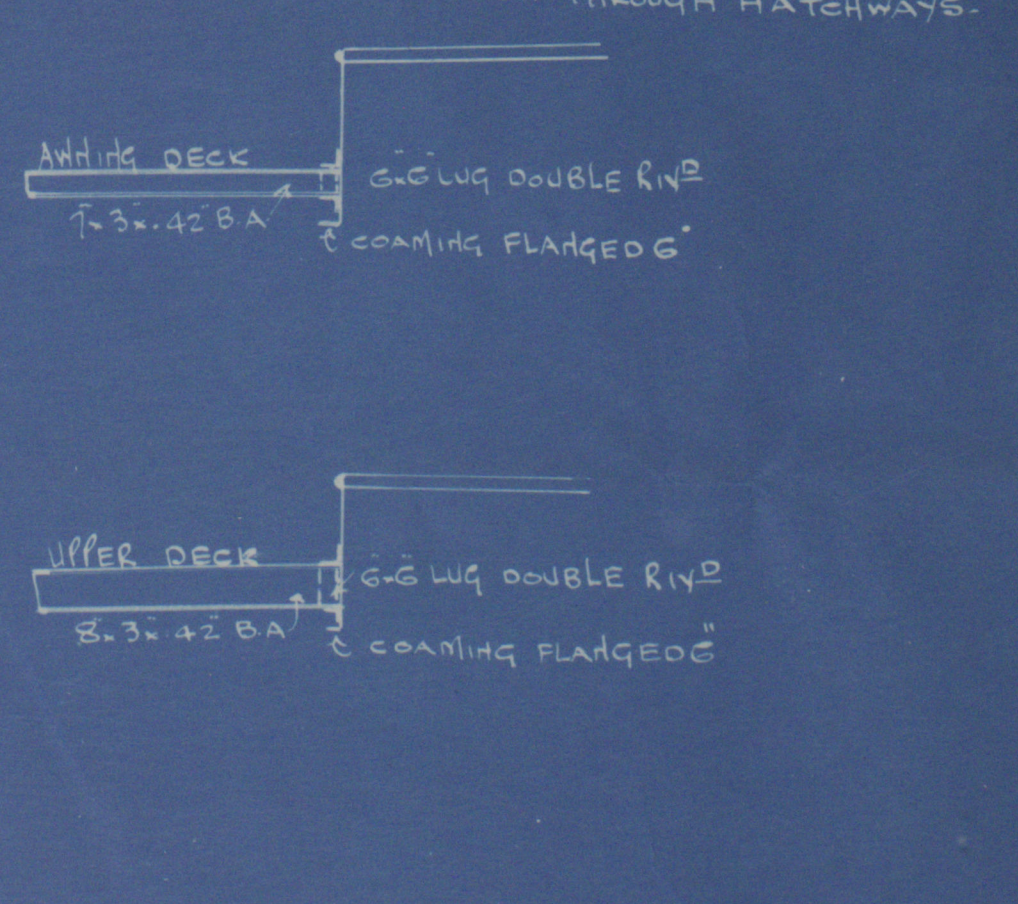
ELEVATION AT GEAR LINE.



ENDS OF HATCHWAYS.



SECTION THROUGH HATCHWAYS.



Nº471.



Messrs Roper & Sons Ltd

No 471.

Profile & Deck Plan

Sp Murchison
Indb 7538



sister vessel to
H. "Chainton"
Indb by ref.



© 2021

Lloyd's Register
Foundation

W685

0021