

MARINE ENGINES N^o 1739, EISS. ORDER.

MESSRS. ROPNER & SONS' SS N^o 471.

1722 Dec 5th 1911
From BLAIR & CO., Ltd.,
STOCKTON-ON-TEES.

To Messrs. Ropner & Sons,
Engineers, Shipyard,
Middlesbrough.
Auxiliary Boiler
Engine N^o 1739
B. 1774 EISS order

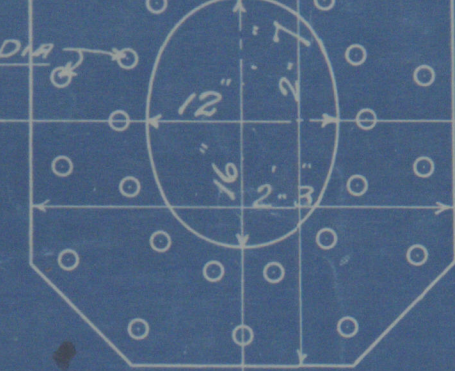
AUXILIARY BOILER

SCALE 1 INCH TO ONE FOOT

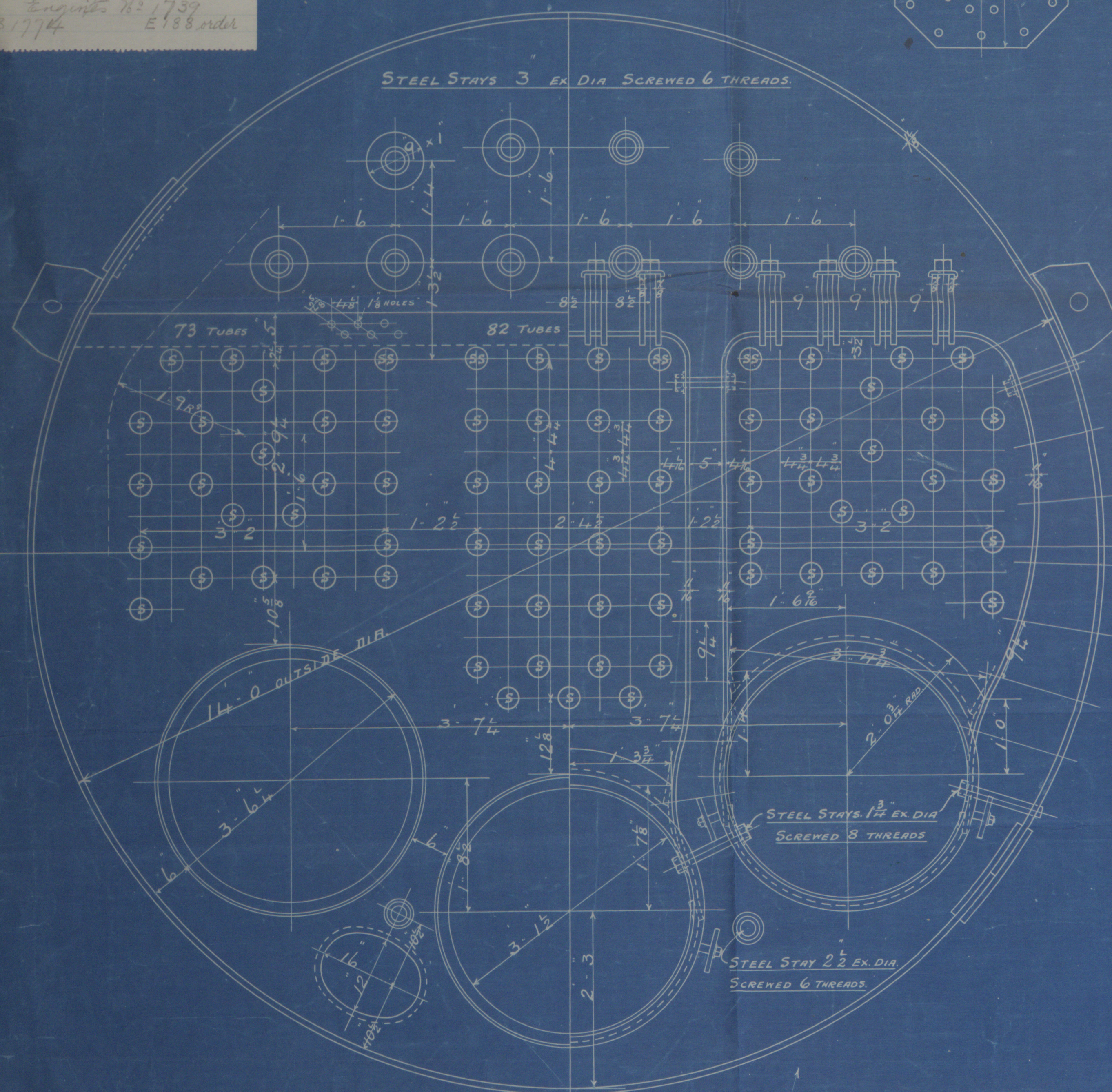
180 LBS. WORKING PRESSURE. 1- OFF.

TOP MANHOLE STIFFENING 1/2" THICK

RIVET HOLES 1 1/8" DIA



STEEL STAYS 3 EX DIA SCREWED 6 THREADS.



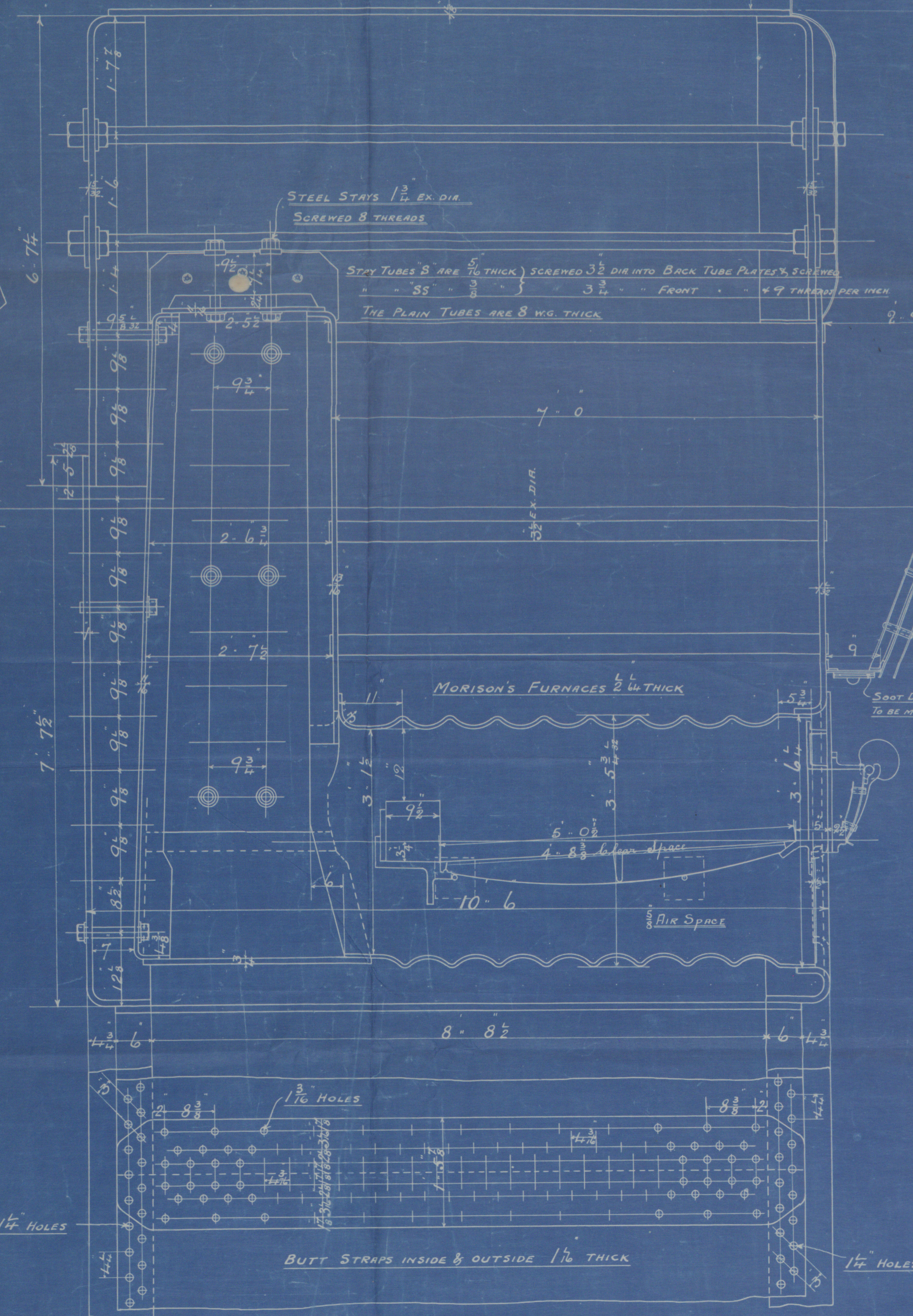
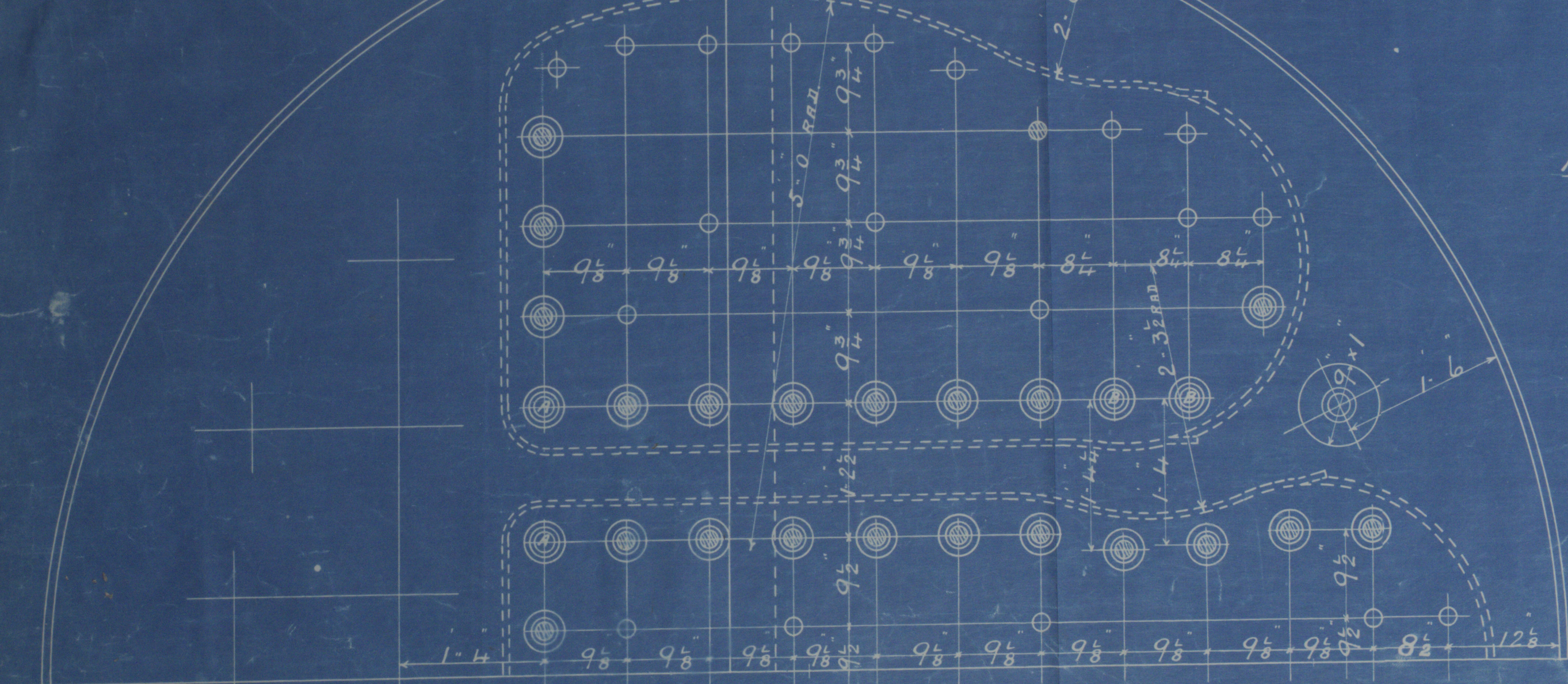
STEEL SCREW STAYS MARKED A ARE 2 1/2" EX DIA. NUTTED

" B " 2 " " "

" C " 1 1/2 " " "

OTHER " " " "

SCREWED 8 THREADS



TOTAL HEATING SURFACE IN BOILER = 1775 SQ FEET
GRATE " " = 48 " " (5'-0" BARS)

THE MINIMUM TENSILE STRENGTH OF SHELL & GIRDER PLATES IS TAKEN AT 28 TONS PER SQ INCH

BLAIR & COY., LTD.
ENGINEERS,
5 DEC 17
STOCKTON-ON-TEES.

Sketch of Boiler
No. B-337

BACK OF BOILER COVERED WITH SHEET IRON.

INTERNAL PARTS TO BE COATED WITH APEXOR SOLUTION.

NOTE:- BEFORE THIS APEXOR SOLUTION IS APPLIED THE BOILERS ARE TO BE STEAMED WITH SODA, & THE SOLUTION THEN TO BE APPLIED.

BOILER COVERING TO BE 2 1/2" OF PLASTIC MAGNESIA & 3" OF GARNET BACK.

BOTTOMS TO BE COVERED WITH NEWALLITE SLABS 2 1/2" THICK.

B. 1774



Ans Boiler

E. 188

James Blair & Co Ltd

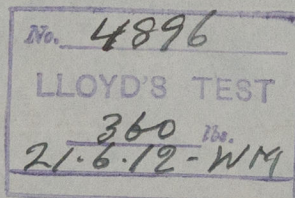
No 1739

for

James Repner & Sons

S.S. No 471

Working Press 180 lbs



S.S. Hurturton

Lab. Report 928

RETAIN

copy

RETAIN

Duplicate of Boiler B.387

Lab Report No. 6724



© 2021

Lloyd's Register
Foundation

W685 - 0022