

T. S. S. 465'-0" x 56'-0" 40'-0" (KEEL TO BEAM)

TO CLASS 100 A. 1. & LLOYDS, THREE DECK RULE.

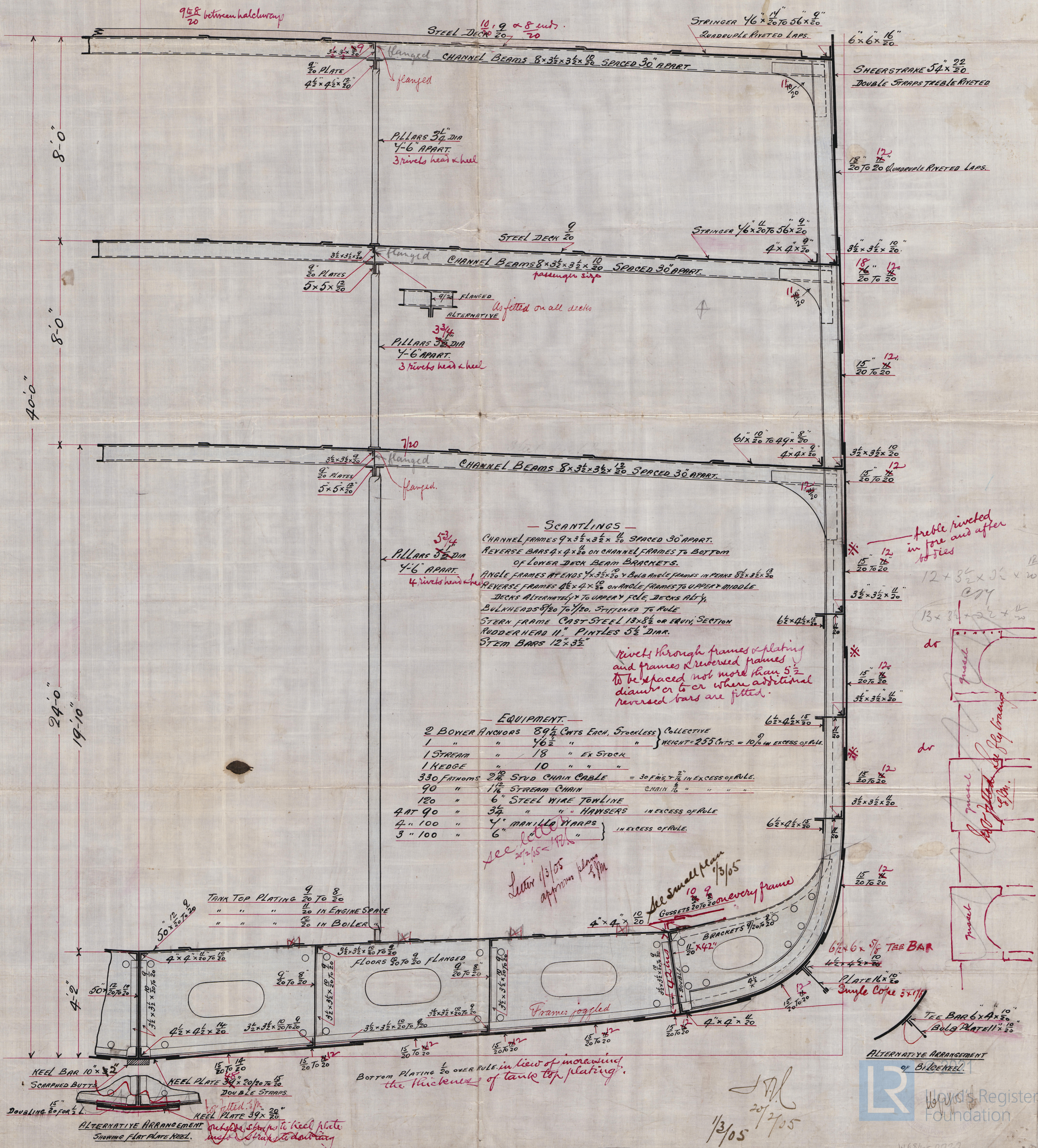
SCALE $\frac{1}{2}'' = 1 \text{ FOOT.}$

NUMERALS.

$28'-0" + 40'-0" + 63'-0" + 5'-\frac{1}{2}" =$	124.5 FRAMING NO
$124.5 \times 462.92 =$	57633 PLATING NO
$131.5 \times 462.92 + 35\frac{1}{2} =$	64446 EQUIPMENT NO

PROPORTIONS.

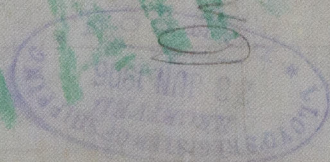
$$\frac{\text{DEPTH TO LENGTH TO UPPER DECK}}{\text{BREADTH TO LENGTH}} = \frac{11.54}{8.26}$$



Messrs Harland & Wolff

SS No 376 & 377

Shipping Section



* Ortega *

Bel 6137.

Wreck 56B

quintubled number 21/2



© 2021

Lloyd's Register
Foundation

W684-0022