

# MIDSHIP SECTION

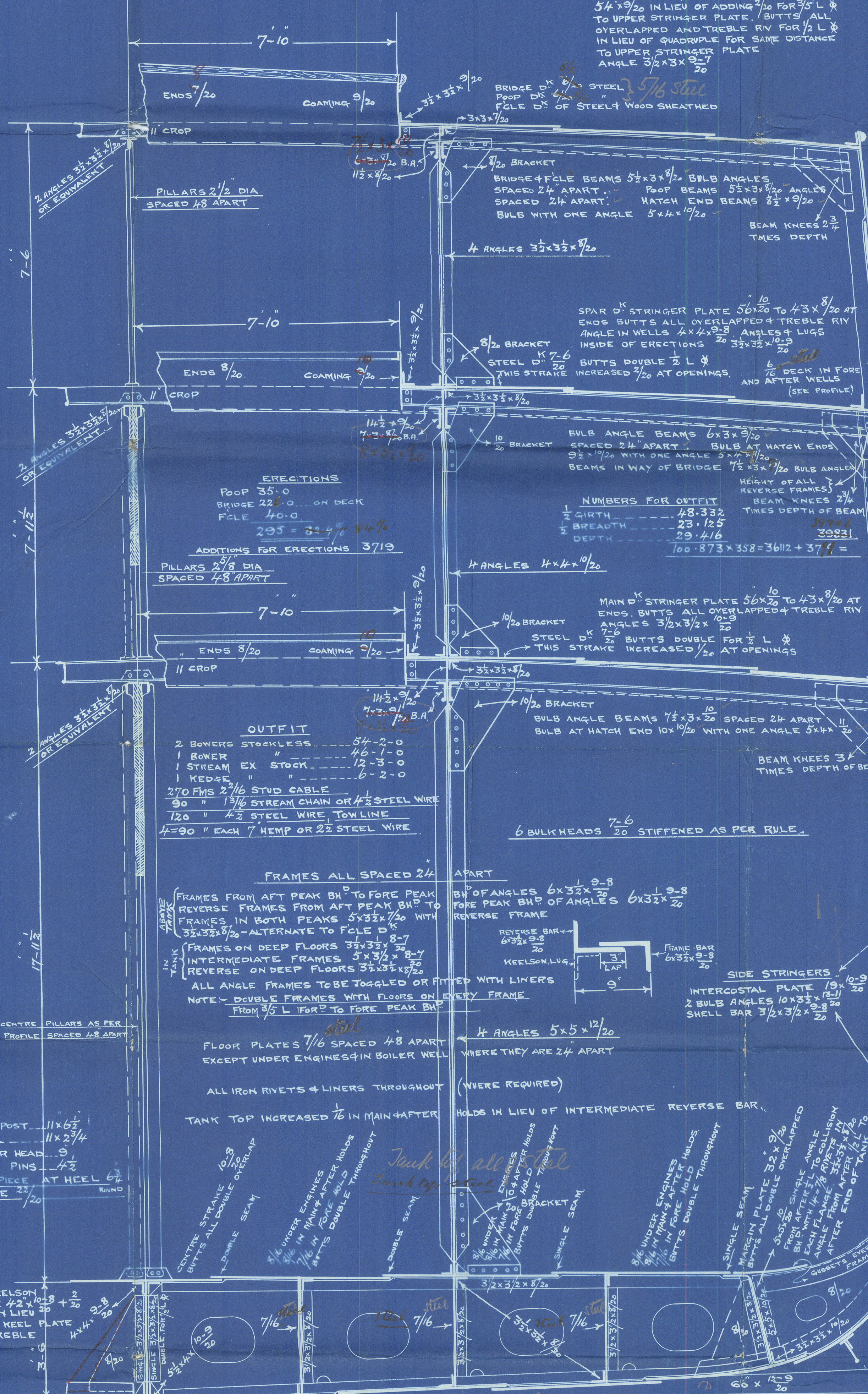
S.S. 307.

DIMENSIONS  
LENGTH PER RULE 358-0  
BREADTH 46-3  
DEPTH OF HOLD TO MAIN D<sup>K</sup> 17-11/2 SPAR D<sup>K</sup> 25-11  
DEPTH OF HOLD TO MAIN D<sup>K</sup> 20-6 2/3 " " 28-6  
CLASSIFICATION 100 A.1. STEEL SPAR D<sup>K</sup>

NUMBERS FOR SCANTLING  
GIRTH 40.333  
BREADTH 23.125  
DEPTH 21.455  
84.916 x 358 = 30399

16.68 DEPTH IN LENGTH TO MAIN D<sup>K</sup> & 12.17 TO SPAR D<sup>K</sup>  
7.74 BREADTHS IN "

FILE & POOP STRINGER PLATE 30x1/20  
ANGLE 3/4x3x1/20  
BRIDGE STRINGER PLATES INCREASED  
5/4x9/20 IN LIEU OF ADDING 3/20 FOR 3/5 L &  
TO UPPER STRINGER PLATE. BUTTS ALL  
OVERLAPPED AND TREBLE RIV FOR 1/2 L &  
IN LIEU OF QUADUPLE FOR SAME DISTANCE  
TO UPPER STRINGER PLATE  
ANGLE 3/4x3x1/20



BRIDGE SIDES 3/20 BUTTS TREBLE RIV. IN LIEU  
OF DOUBLING & QUAD RIV TO SHEER STRAKE

POOP & FILE SIDES 7/20  
BUTTS DOUBLE

BRIDGE SIDES 9/20 IN LIEU OF  
DOUBLING TO SHEER STRAKE  
BUTTS TREBLE OVERLAP

POOP & FILE SIDES 7/20  
BUTTS DOUBLE

BULWARKS 1/4  
5/4 LAP 7/8 RIVETS. SEAMS DOUBLE  
FULL LTH OF BRIDGE

SPAR SHEER STRAKE 4x13-10  
2/20 TO BE ADDED FOR 3/4 L &  
BUTTS ALL OVERLAPPED & TREBLE RIV  
DOUBLING PLATES AT ENDS OF BRIDGE.

6 LAP RIV.

5/4x12-9  
BUTTS ALL OVERLAPPED  
AND TREBLE RIV  
BRIDGE SHEER STRAKE & SIDES EACH  
INCREASED IN LIEU OF ADDING 2/20 FOR  
1/2 LTH TO THIS STRAKE

5/4 LAP 7/8 RIVETS & ALL BELOW TO KEEL PLATE

MAIN SHEER STRAKE 4x12-10  
BUTTS ALL OVERLAPPED &  
TREBLE RIV

5/4x12-9  
BUTTS ALL OVERLAPPED &  
TREBLE RIV

4/6x12-9  
BUTTS ALL OVERLAPPED &  
TREBLE RIV

5/4x12-9  
BUTTS ALL OVERLAPPED &  
TREBLE RIV

4/6x12-9  
BUTTS ALL OVERLAPPED &  
TREBLE RIV

5/7x12-9  
BUTTS ALL OVERLAPPED  
& TREBLE RIV  
QUADUPLE WHERE IN EXCESS OF 4/6

KEEL PLATES 3/4x20 + 2/20  
FOR 1/2 LTH & IN LIEU OF  
DOUBLING. BUTTS ALL  
TREBLE RIV. WITH DOUBLE  
STRAPS. 1 RIVETS IN  
BARS. BUTTS & SEAMS.

CENTRE KEELSON  
CENTRE KEELSON 4/2x12-20 HAS  
BEEN ADDED IN LIEU OF KEEL PLATE  
DOUBLING. RIDER PLATE 12x20  
TOP ANGLES 5/2x4x1/20 ALL PROPERLY  
SCARFED INTO CENTRE PLATE OF  
CELLULAR DOUBLE BOTTOM BEFORE  
4' AFT WELL.

60x12-9  
BUTTS ALL OVERLAPPED  
& QUADUPLE RIV WHERE  
IN EXCESS OF 5/4  
BUTTS ALL OVERLAPPED &  
QUADUPLE RIV WHERE  
IN EXCESS OF 4/6

NOTE - 2 STRAKES NEXT GARBOARD TO BE 3/4 THICKNESS UP TO COLLISION B.H.  
IN LIEU OF DOUBLING TO KEEL PLATE FOR 1/2 L & 2/20 IS ADDED TO  
CENTRE KEELSON 3/20 TO KEEL PLATE 4/20 TO GARBOARD STRAKE  
FOR 1/2 L &

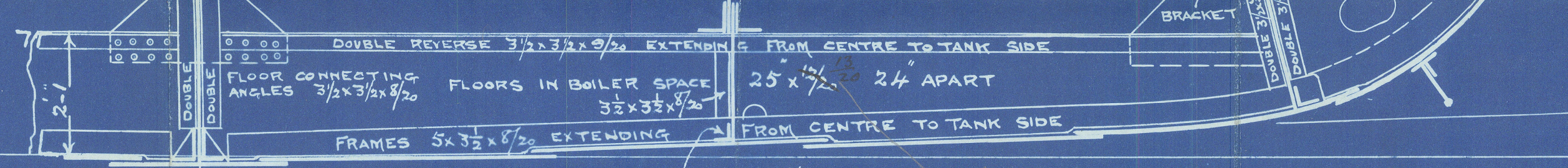
SIDE KEELSON PLATE 16x12-20  
INTERCOSTAL 1/20  
ANGLES 5/2x4x1/20 SCARFED INTO  
CELLULAR DOUBLE BOTTOM BEFORE  
4' AFT WELL. SHELL LUGS 3/2x3/2x9/20  
RIDER PLATE 12x1/20

DEEP FRAMING IN  
BOILER WELL  
REVERSE BAR 6x3/2x9/20  
LUG 1/20

FRAME 6x3/2x9/20  
LUG 1/20

TANK MARGIN EXTENDED  
THROUGH IN LIEU OF  
BILGE KEELSON

## SECTION IN BOILER WELL



KEEL BARS CONTINUOUS  
5/2x4x10/20

PLAN NO. 307

SHORT BROTHERS LTD  
SHROPSHIRE

17-12-01

Lloyd's Register  
N 682-0265



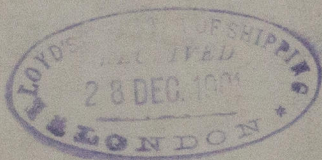
Short Bros Ltd

— S.S. No 307 —

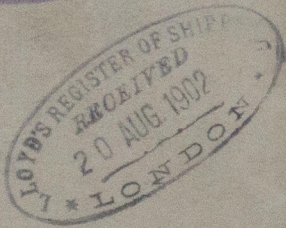
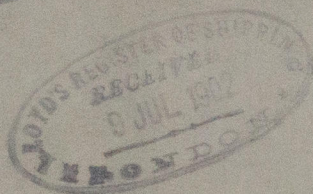
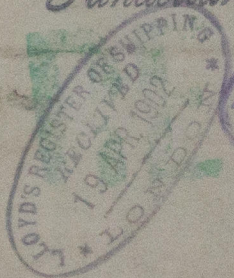
Midship Section.  
S. S. "HINDUSTAN"

6/177

28/14



Sunderland No. 21067



© 2020

Lloyd's Register  
Foundation



002-0265