

直立汽罐

尺度 $1\frac{1}{2}'' = 1'-0''$

番

大正	10
小正	1

使用壓力 每平方吋 八拾听
 水壓試驗力 每平方吋 百六拾听

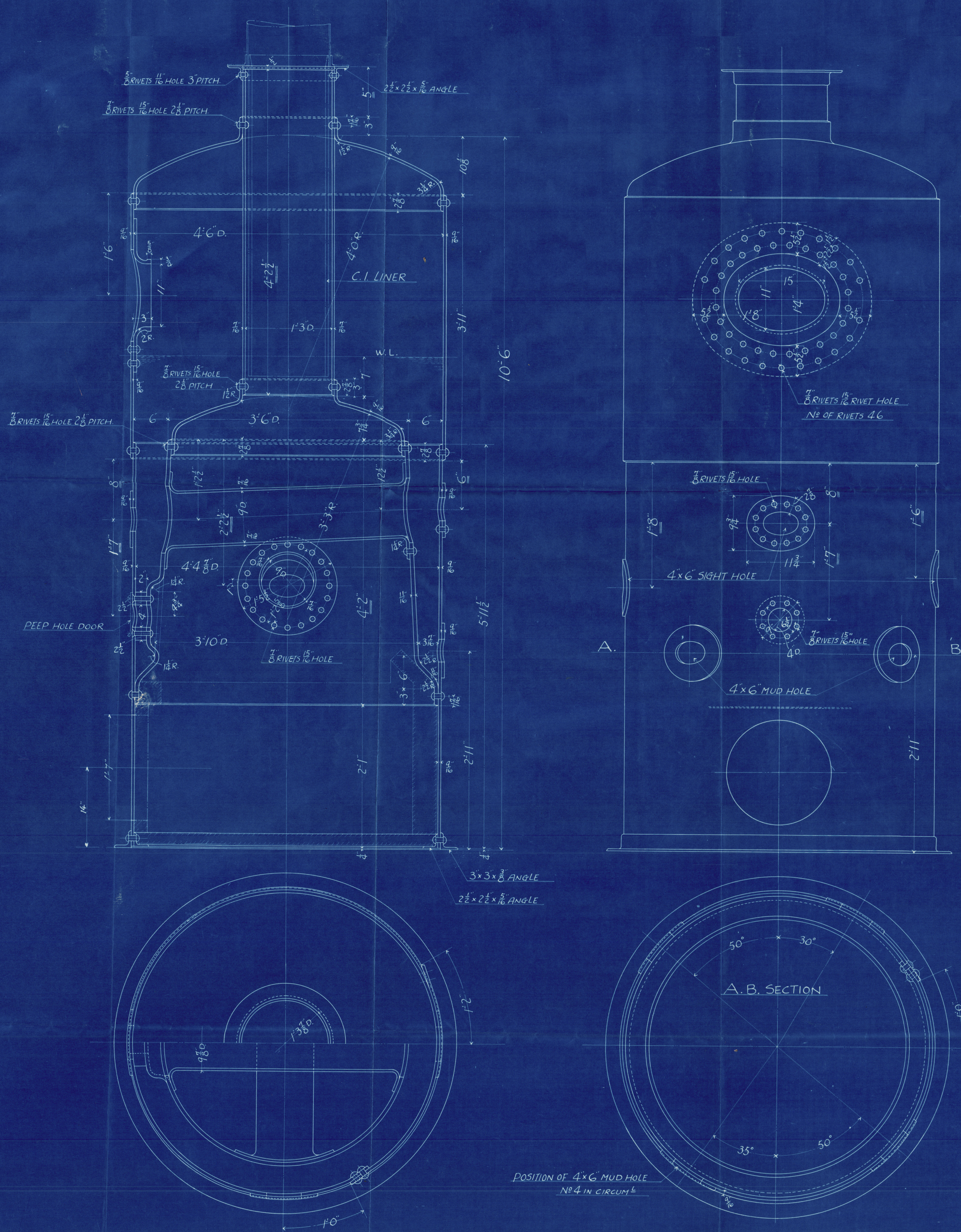
PERCENTAGE OF LONGITUDINAL JOINT.
 PLATE 67.3 %
 RIVET 70.0 %

PERCENTAGE OF CIRCUMFERENTIAL JOINT.

	SHELL.	END PLATE.
PLATE	55.7 %	55.7 %
RIVET	47.4 %	47.4 %

PARTICULARS

DIA. OF BOILER (MEAN)	4'-6"
HIGH " " (OVER END PLATE)	10'-6"
Nº OF CROSS TUBE (9" INT. DIA.)	2
HEATING SURFACE	68.0 sq
WORKING PRESSURE	80 LB/sq
WATER TEST PRESSURE	160 LB/sq
OIL BURNING SYSTEM	



BUILDER'S No. 131-2

VERTICAL BOILER

Mr. Kojasan Mann

~~GEN. BOX NO 811~~

RETAIN

APPROVAL IS REQUESTED.

ONE COPY TO BE RETURNED
WITH APPROVAL, AND ONE COPY
TO BE RETAINED BY THE OWNER.



© 2020

Lloyd's Register
Foundation

W681-0150