

— N^o 132 —
 MITZUI BUSSAN KAISHA L^D KOBÉ, JAPAN.

ARRANGEMENT AND CONSTRUCTION
 OF
 PESCORS' WING-FINS

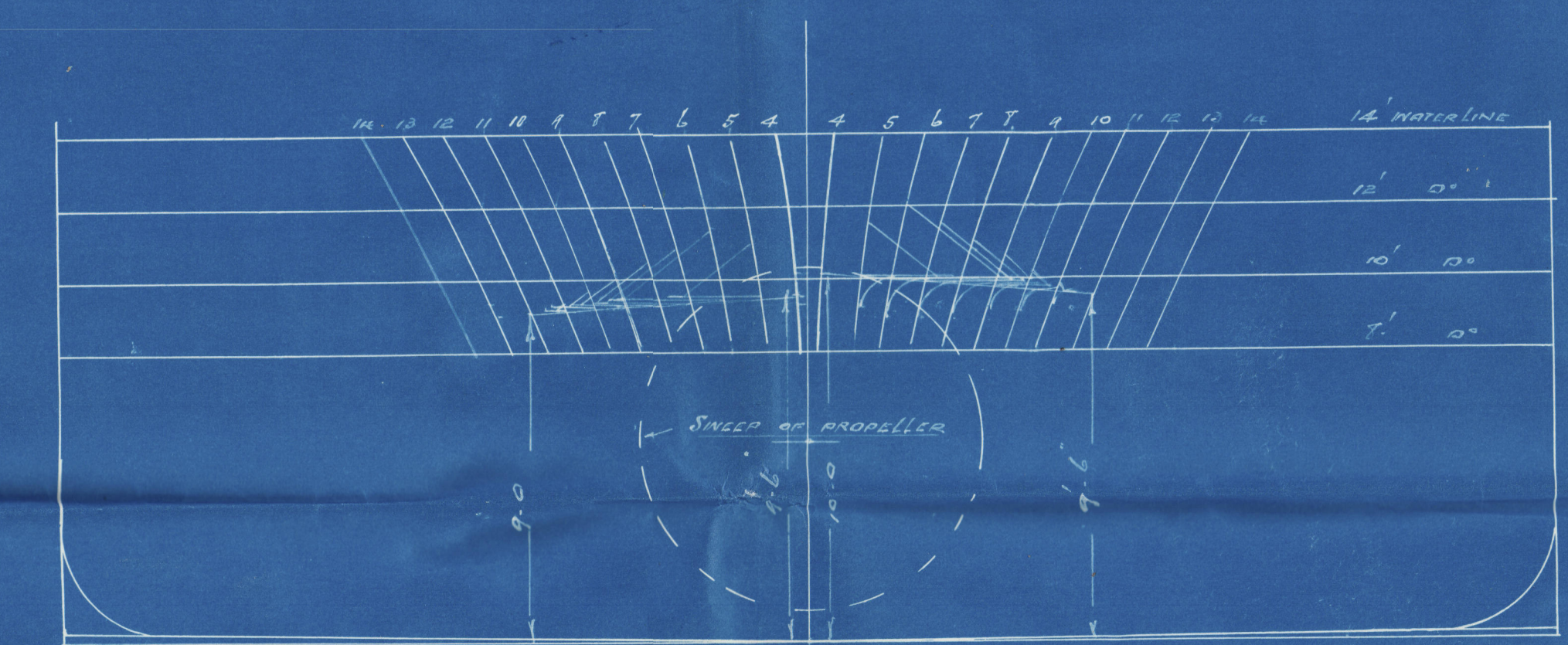
Scale 1/2 and 1/4" = 1 foot

JOSEPH H. PESCOD
 NAVAL ARCHITECT
 & SHIP-BUILDER,
 14, ABERDEEN HILL,
 NEWCASTLE-ON-TYNE.
 DATE 17 March 1927

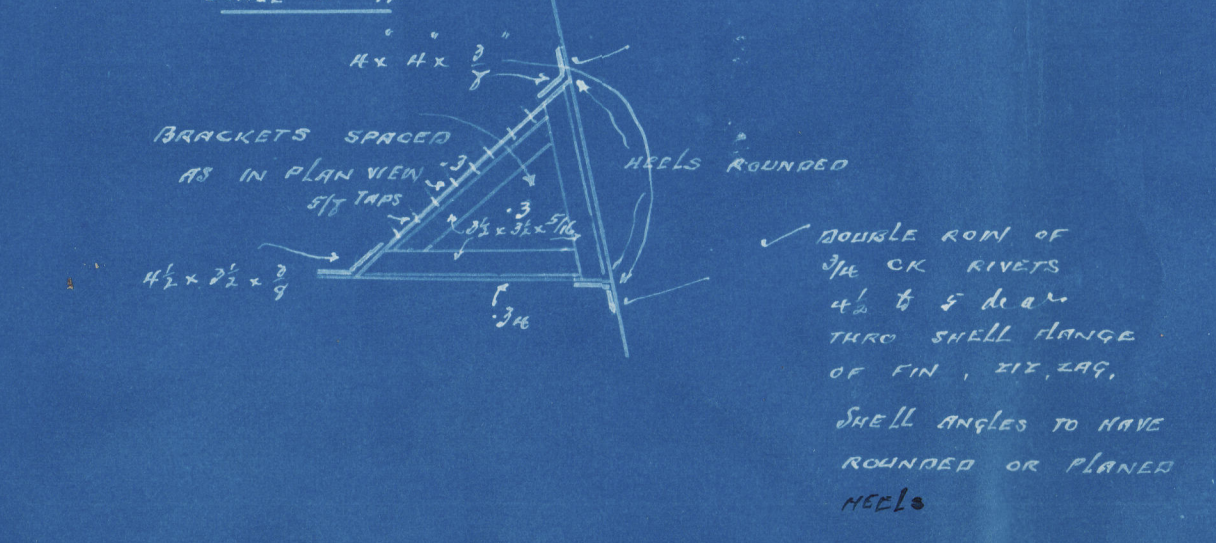
Note —
 Shell angles at the laps and butts,
 shell on way of rivets, and also
 the inside of wing-fins to be
 treated with bituminous,
 and the inside of wing-fins filled
 with breeze and cement, care to cement
 over in three parts hole to fill corners
 and holes to be finished with pure cement,
 to be welded practically at ship.

— Rivets —
 all rivets to be spaced
 to be 5" in diameter
 1" dia" apart three fins
 to make three frames

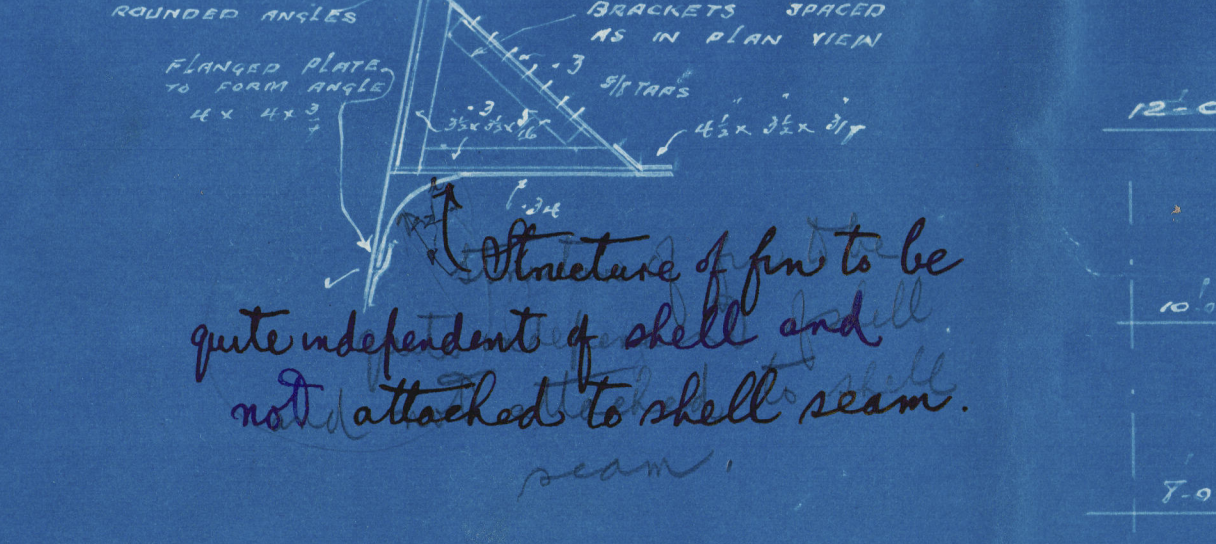
— BODY PLAN —
 Scale 1/4" = 1 foot



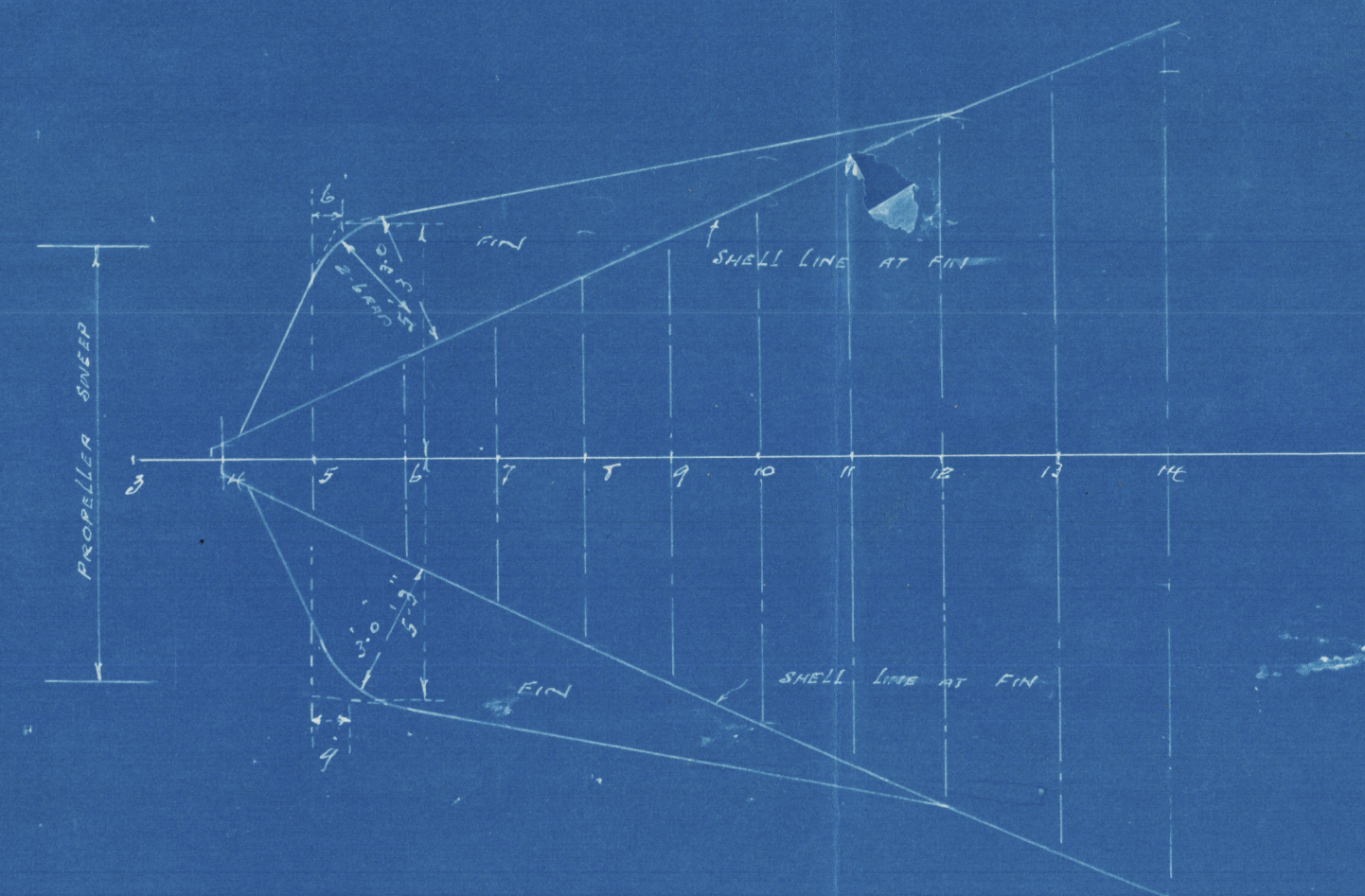
SECTION PORT SIDE
 Scale 1/2" = 1 foot



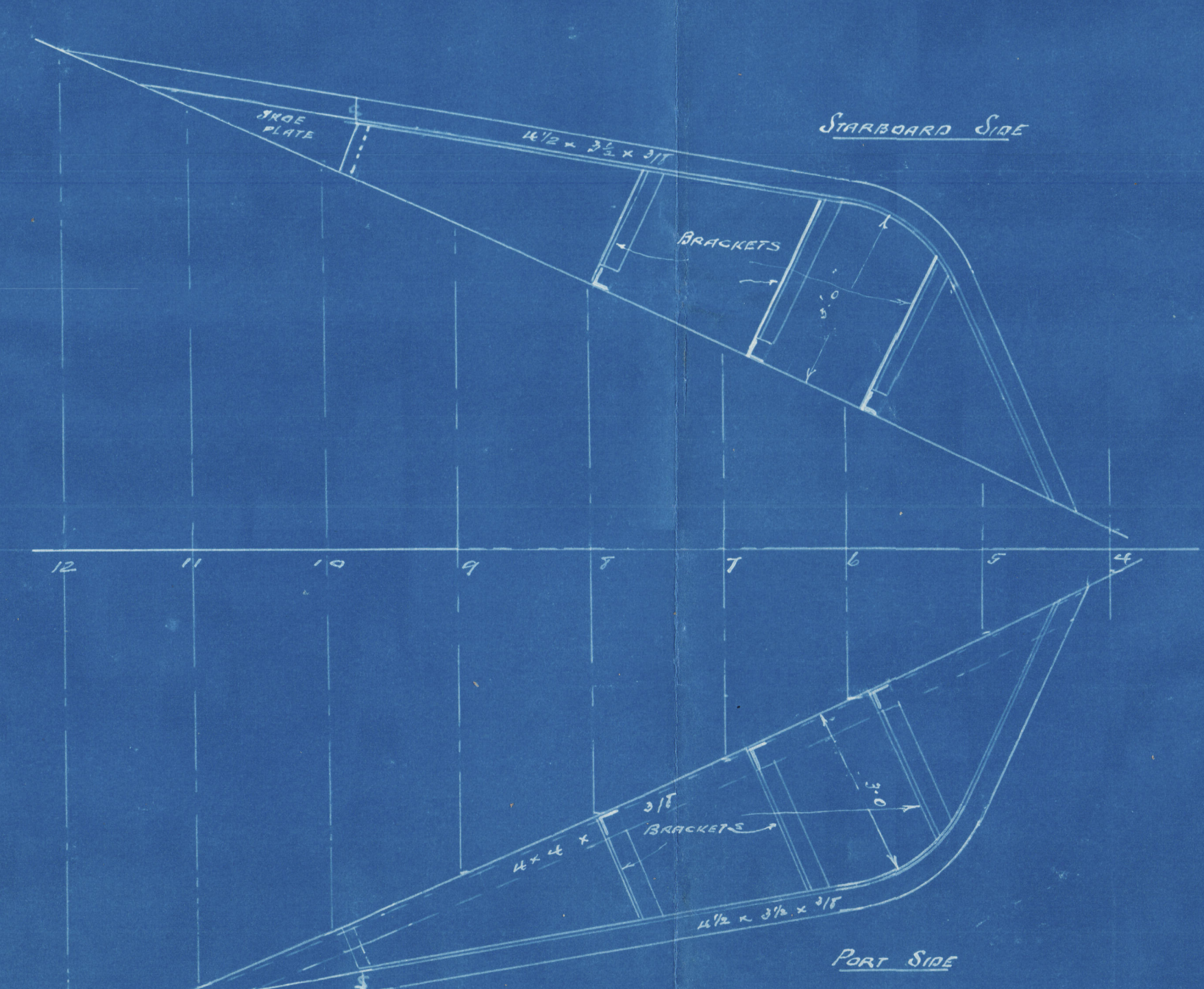
SECTION STARBOARD SIDE
 Scale 1/2" = 1 foot



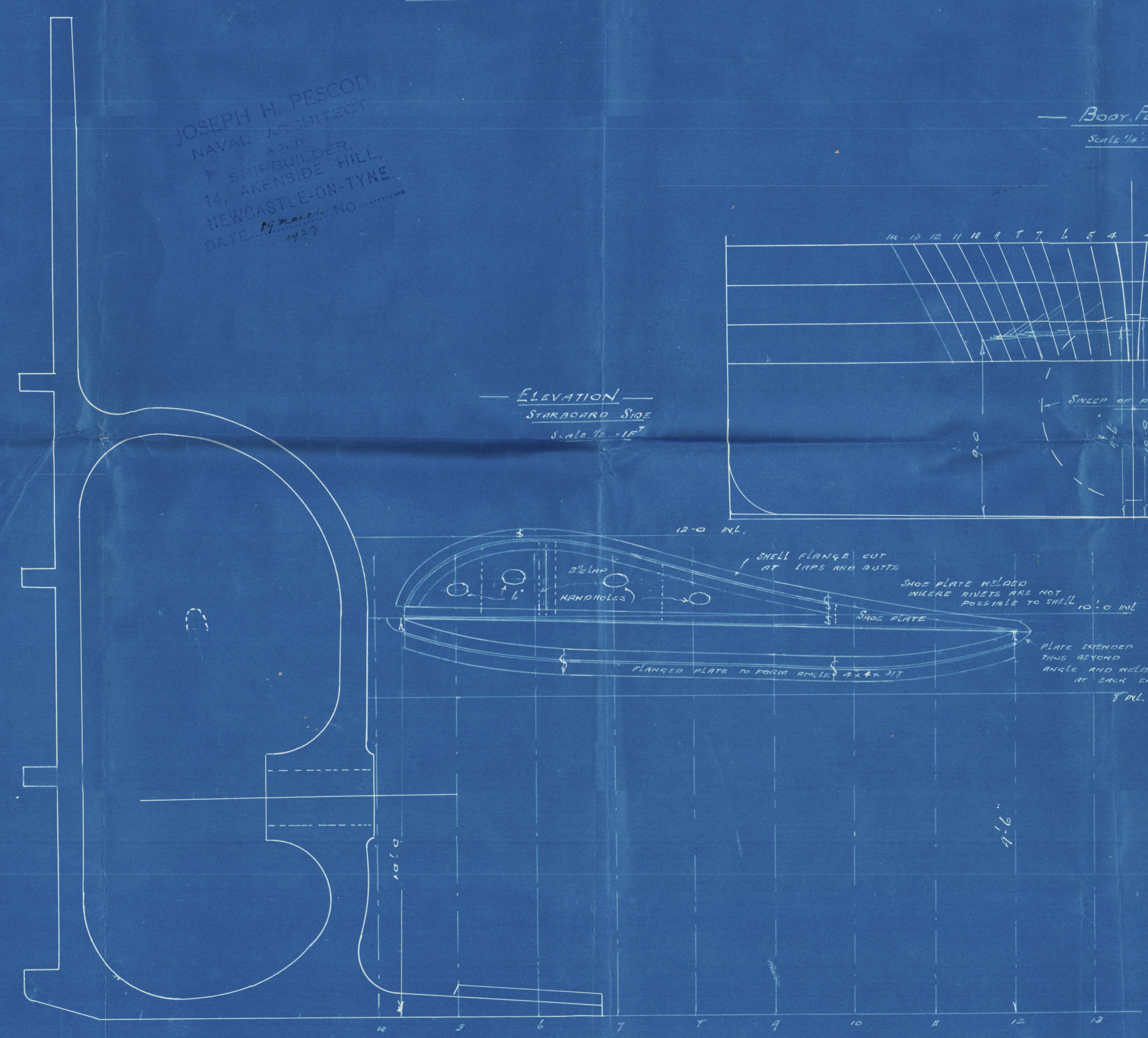
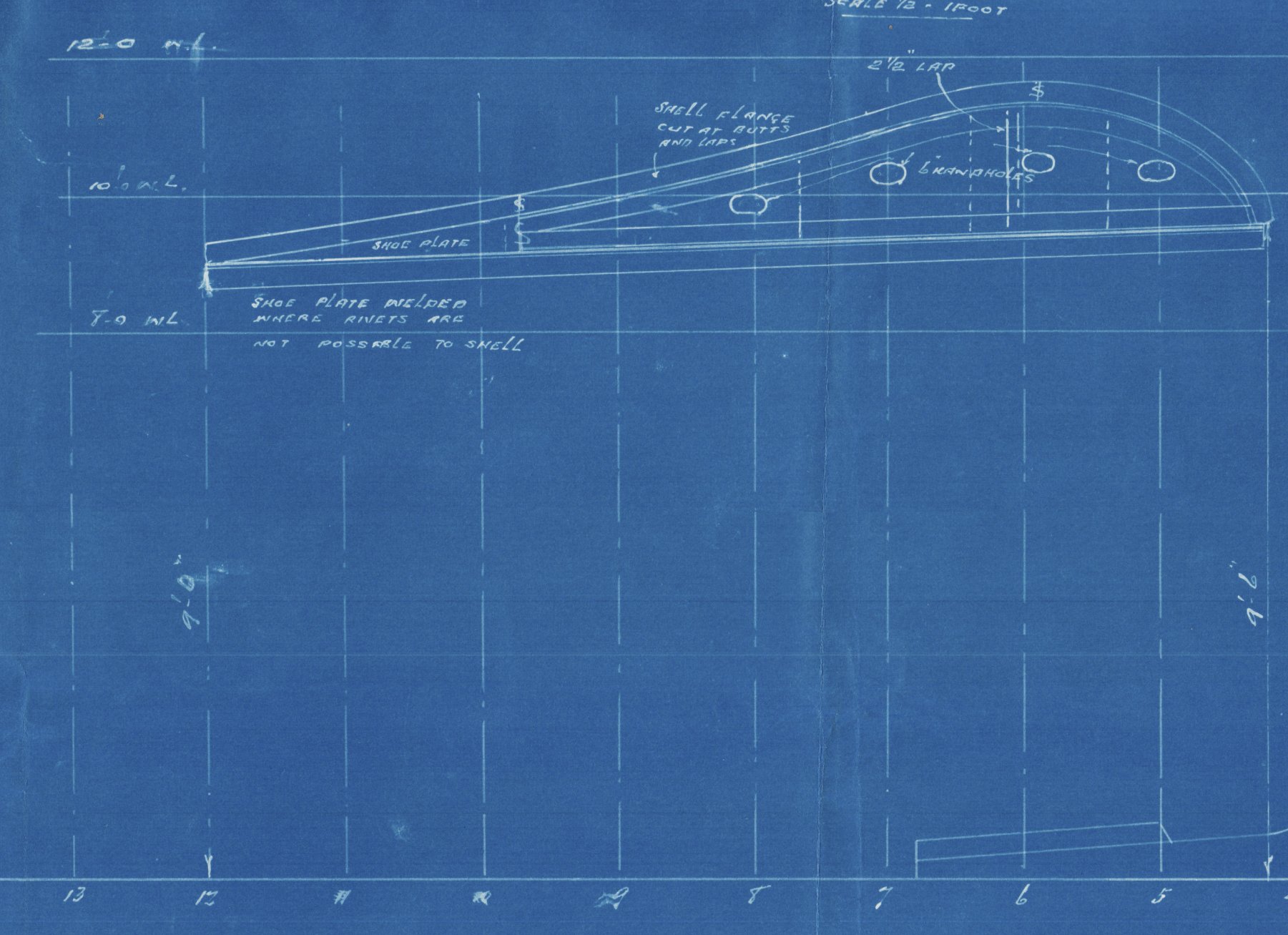
OUTLINE PLAN OF FINS
 Scale 1/4" = 1 foot



— PLAN —



ELEVATION PORT SIDE
 Scale 1/2" = 1 foot



W.S.
 21.3.27

Mitsui Bussan

132

Pescod's Wing-fins

Mrs. Koyasan Matsu

GEN. ECX N2

811

RETAIN

W681-0154



© 2020

Lloyd's Register
Foundation