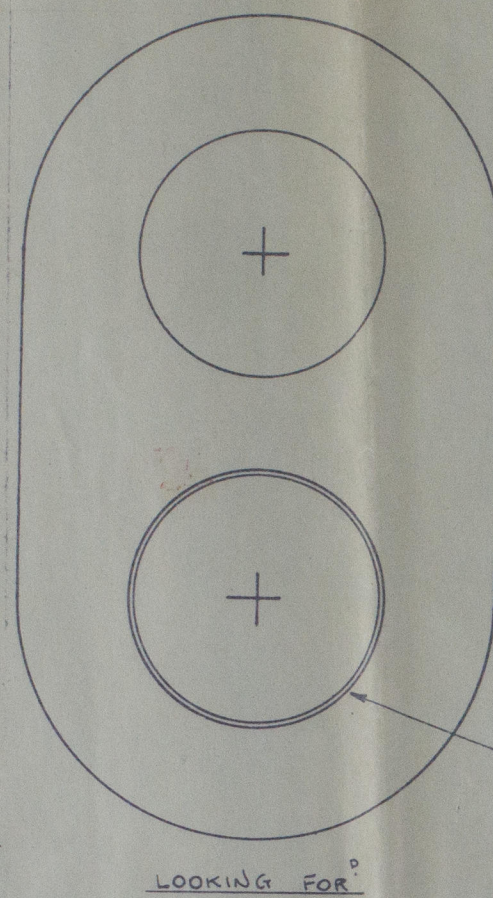
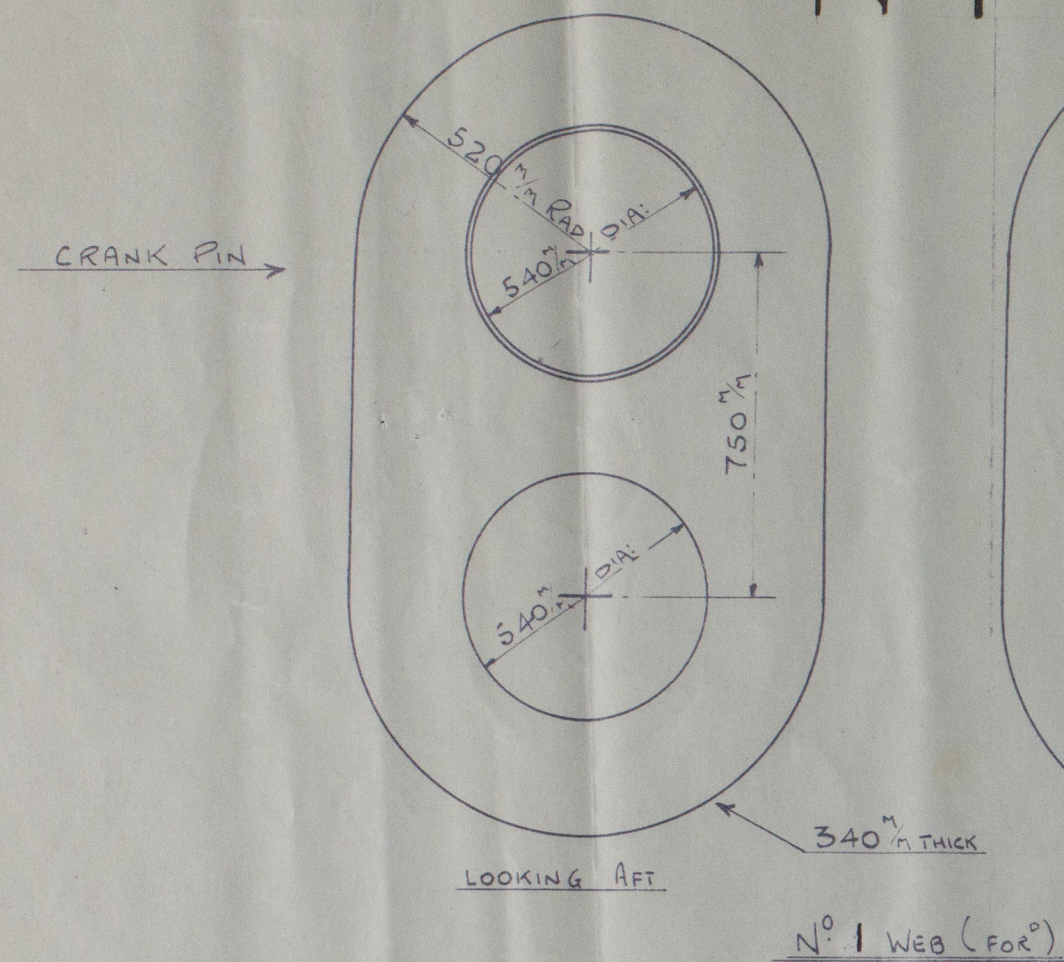
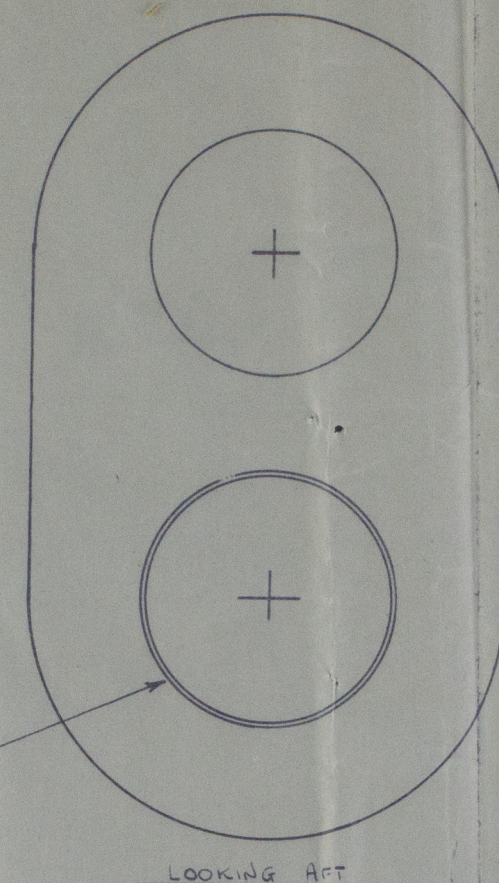


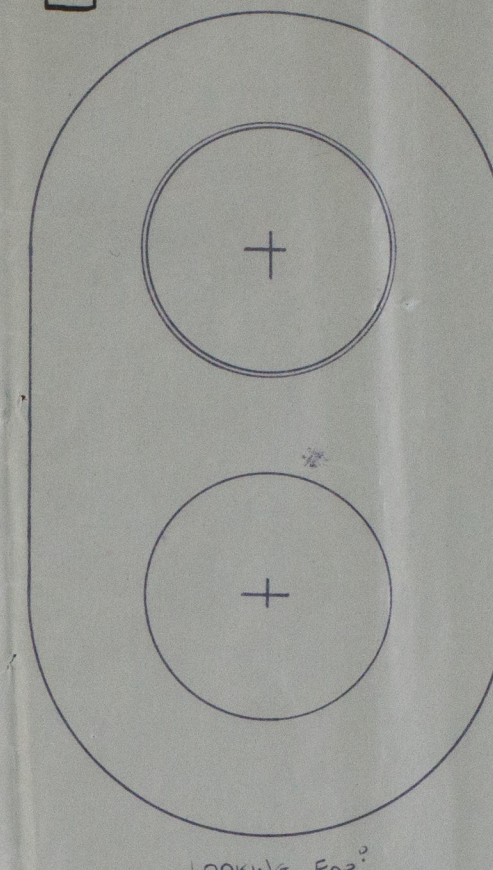
Nº 1



WELDING

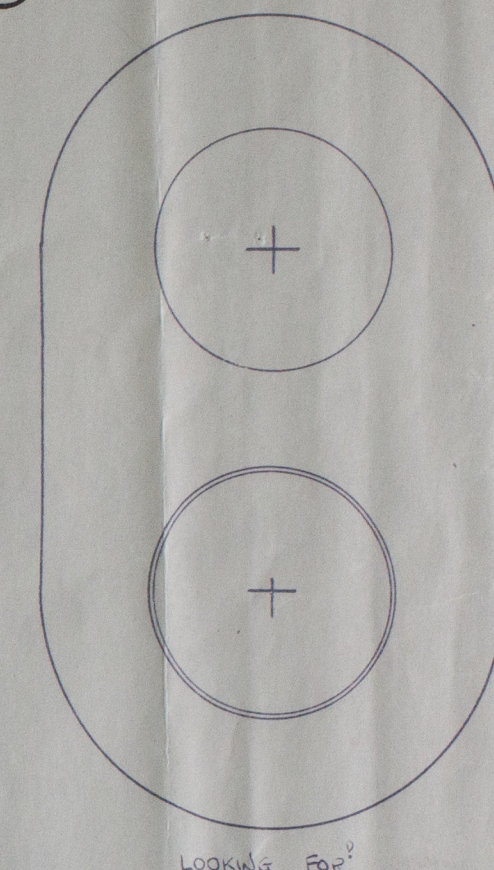
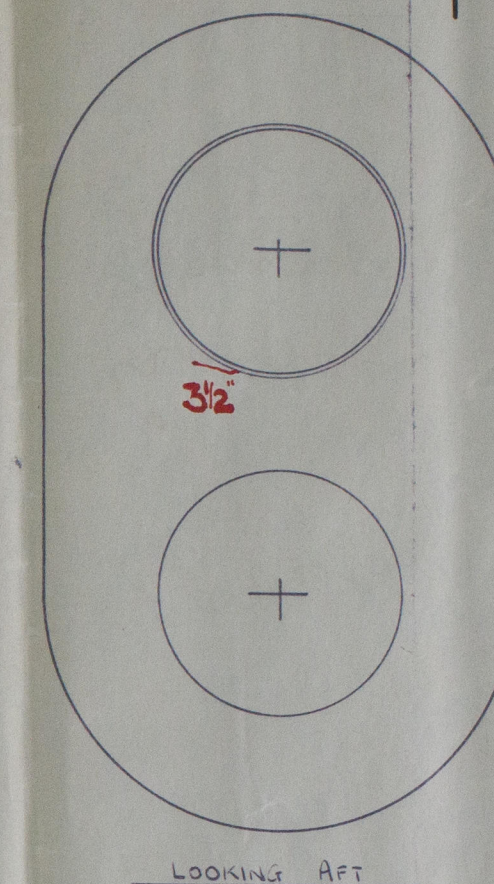


Nº 2

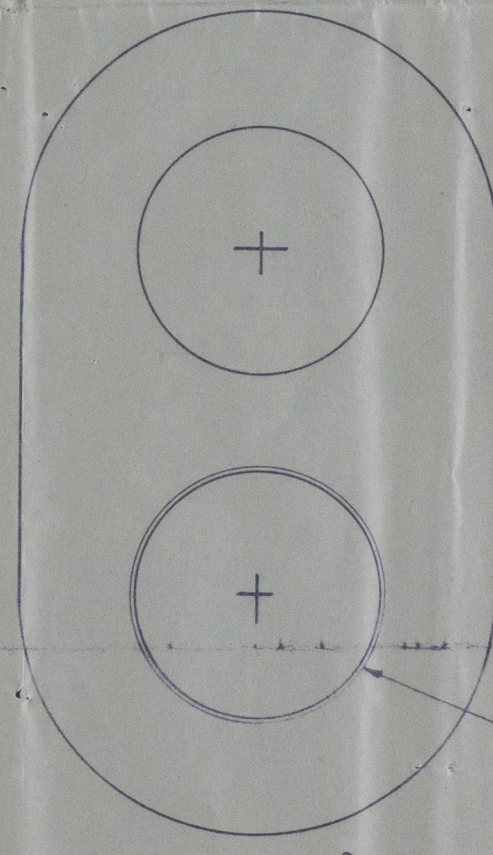
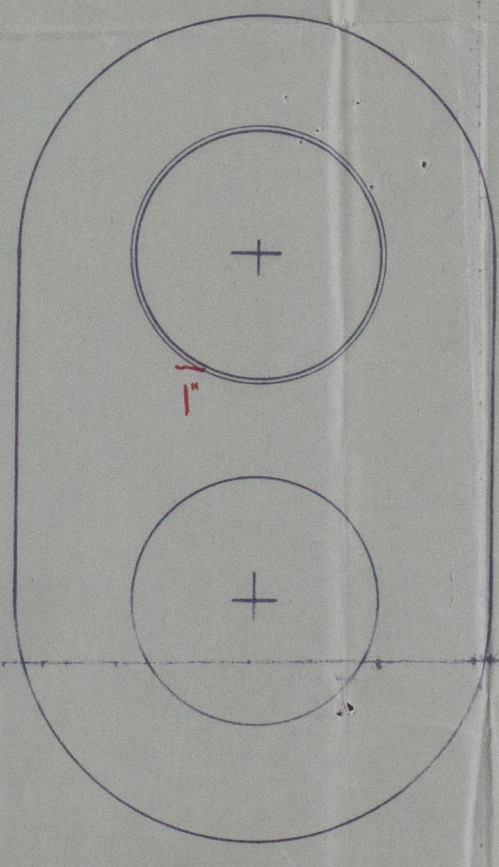
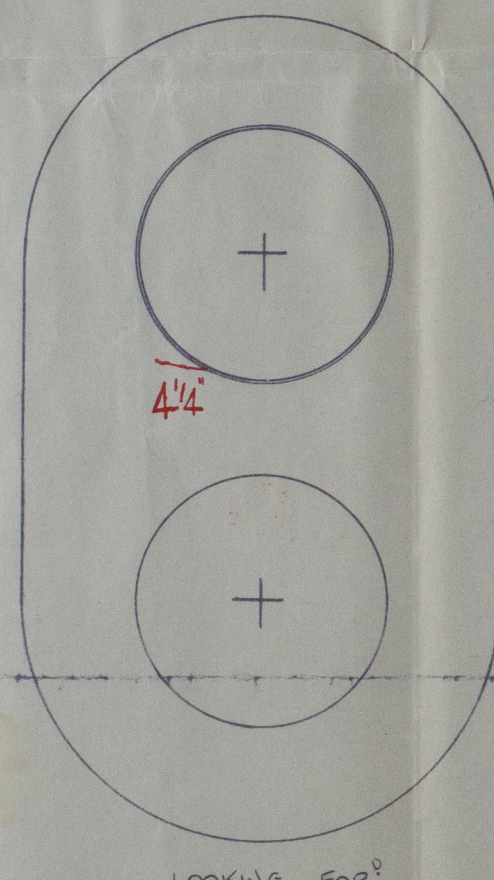
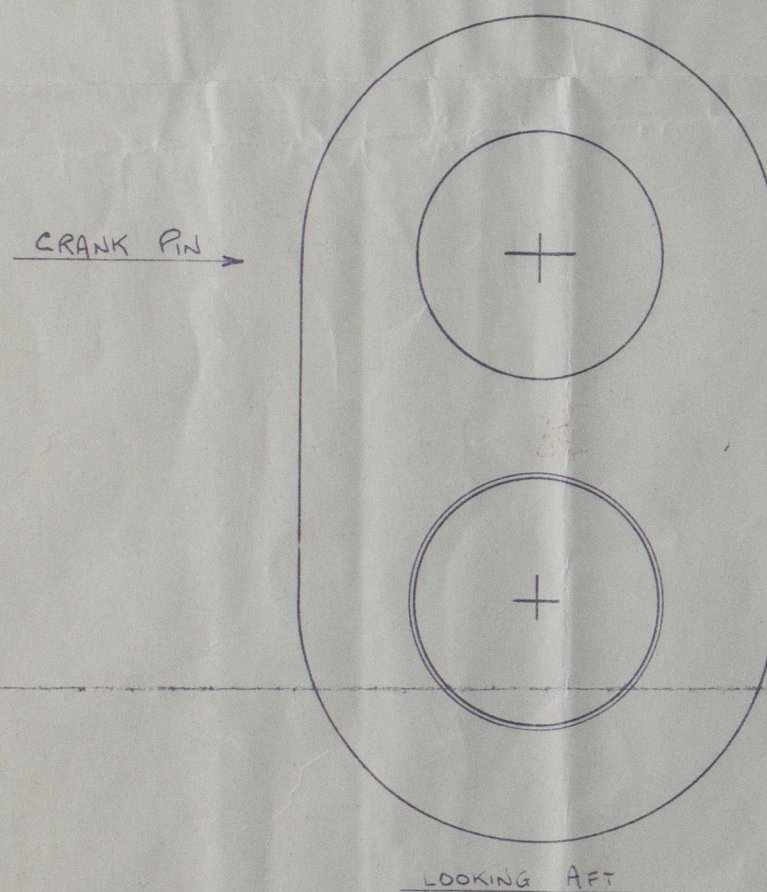


Nº 2 WEB (FORº)

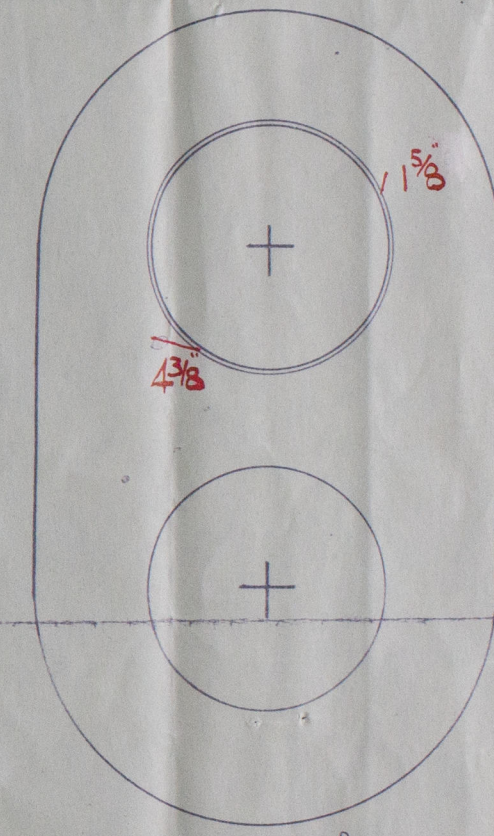
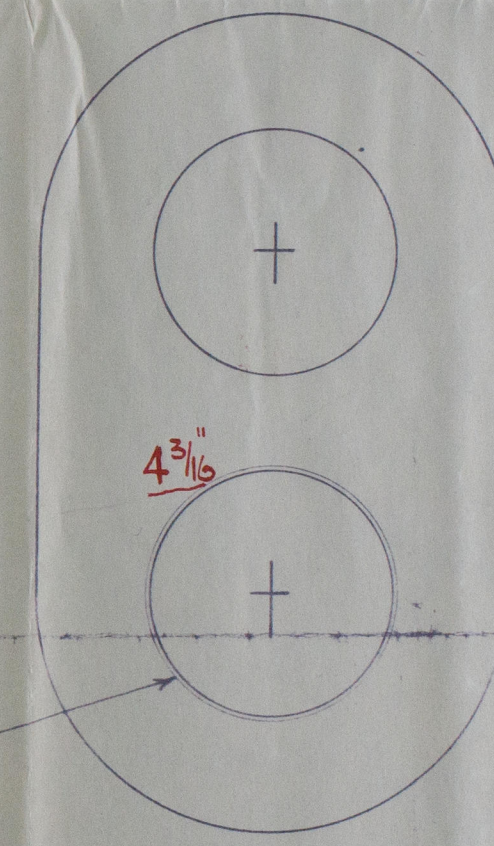
Nº 3



Nº 3 WEB (FORº)



Nº 2 WEB (AFT)



Nº 3 WEB (AFT)

M. V. PECTEN.

SKETCHES SHOWING CRACKS IN WEBS OF FORº HALF OF CRANKSHAFT

ALL CRACKS IN WEBS ARE CONTINUATIONS OF CRACKS IN WELDED METAL.

NUMEROUS FINE CRACKS IN WELDED METAL.

"PECTEN"

S. J. Pecten,

Now rept. No. 91190

Cracks in web of
forward half of crank
shaft.

W68-0123



© 2019

Lloyd's Register
Foundation