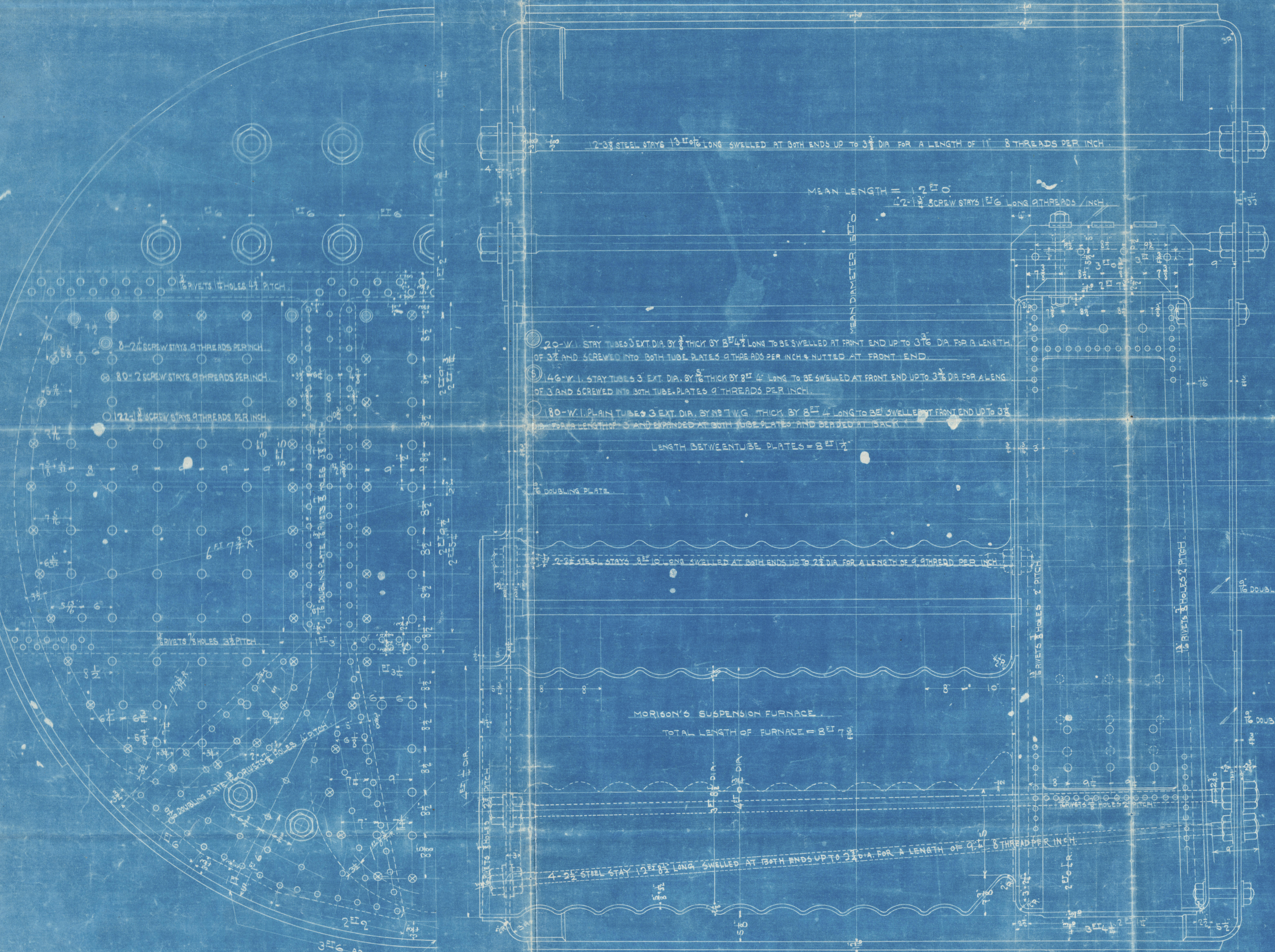
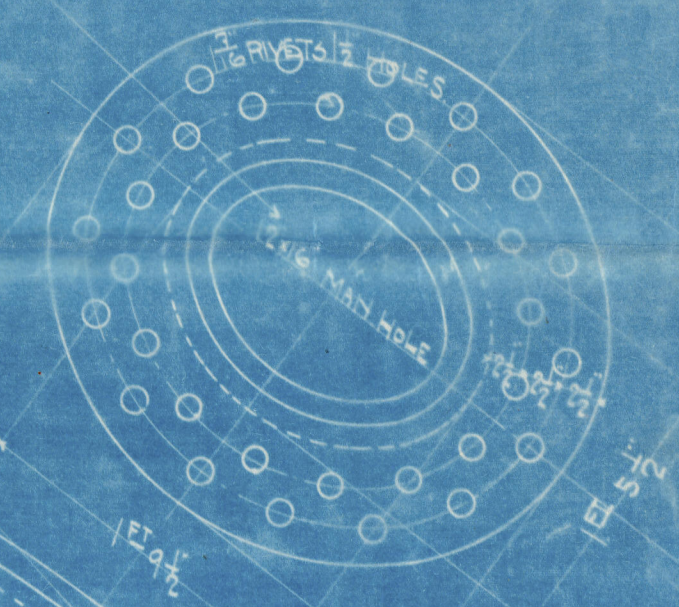
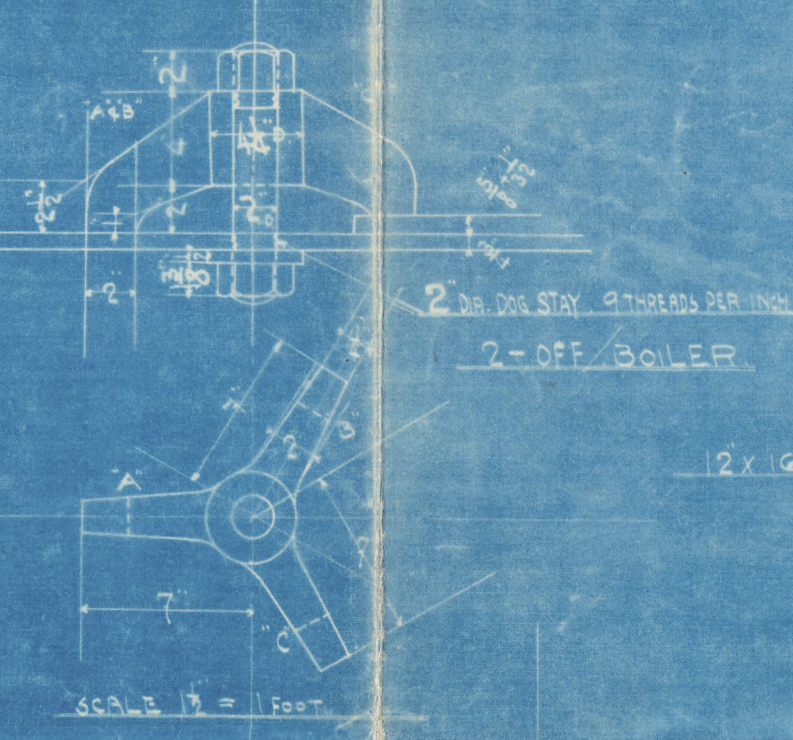


LONGITUDINAL SEAM

DOUBLE BUTT STRAP	TRIPLE RIVETING
THICKNESS OF SHELL PLATE	1 1/2"
OUTER BUTT STRAP	1 1/2"
INNER	1 1/2"
DIA. OF RIVETS	1 1/2"
HOLES	1 1/2"
PITCH OF RIVETS AT OUTER ROW	8 5/8"
2/3 OF PLATE	9 1/4"
2/3 OF RIVETS	9 1/4"
COMBINED PERCENTAGE OF PLATE & RIVET	88.34%

SCREW STAYS

NO.	DIA.	NO. OF STAYS	BOILER
1	2 1/2"	8	24
2	2 1/2"	8	24
3	2 1/2"	8	24
4	2 1/2"	8	24
5	2 1/2"	8	24
6	2 1/2"	8	24
7	2 1/2"	8	24
8	2 1/2"	8	24



PARTICULARS

MEAN DIAMETER	15' 0"
LENGTH	12' 0"
FURNACE	3' 3 1/2"
LENGTH OF FIRE BAR	5' 1 1/2"
GRATE AREA (MEAN)	66.12 sq. ft.
HEATING SURFACE OF FURNACE	161.13 sq. ft.
CHAMBER	285.4 sq. ft.
TUBES	2210.4 sq. ft.
TOTAL HEATING SURFACE	2656.9 sq. ft.
WATER GRADE VALVE	40.18 sq. ft.

STRENGTH OF SHELL PLATE = 28 TONS TO 32 TONS PER SQ. INCH.

WORKING PRESSURE = 200 LBS. PER SQ. INCH.

5-OFF FOR EACH SHIP.

NACASAKI WORKS. MITSUBISHI ZOSENKAISHA.

No. 2281.
MAIN BOILER.
SCALE 1 INCH = 1 FOOT.



1/2" 2026
1/2" 2026
1/2" 2026

Main Boiler.

S. S. No. 281.

Mitsubishi Zosen Kaisha.

Nagasaki Report No. 1303.

Alabama Maru

RETAIN



© 2020

Lloyd's Register
Foundation

W676 0239