

3 STEEL BOILERS 9'-6" DIAM BY 9'-0" LONG LLOYDS SURVEY 100 W.P.

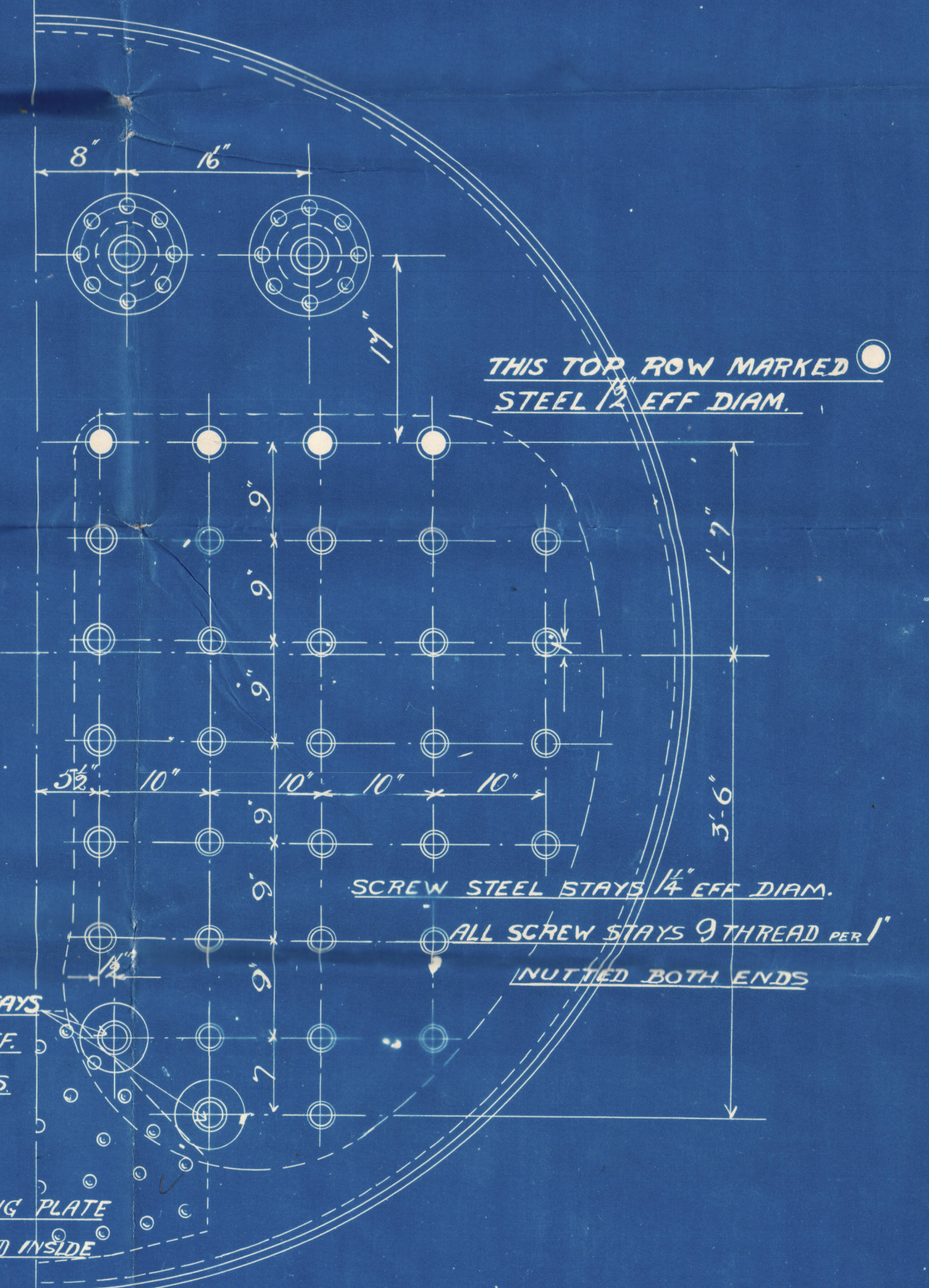
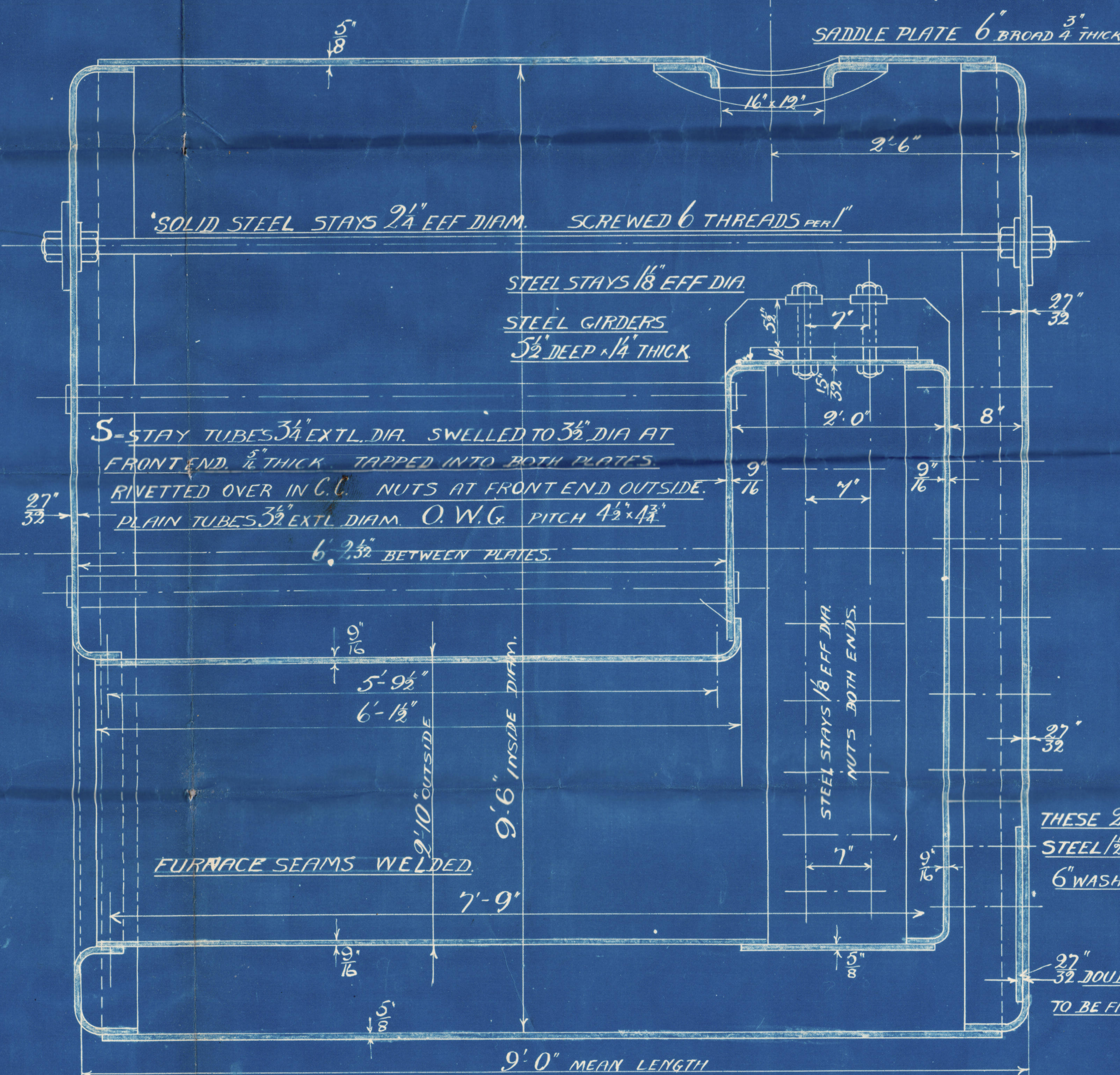
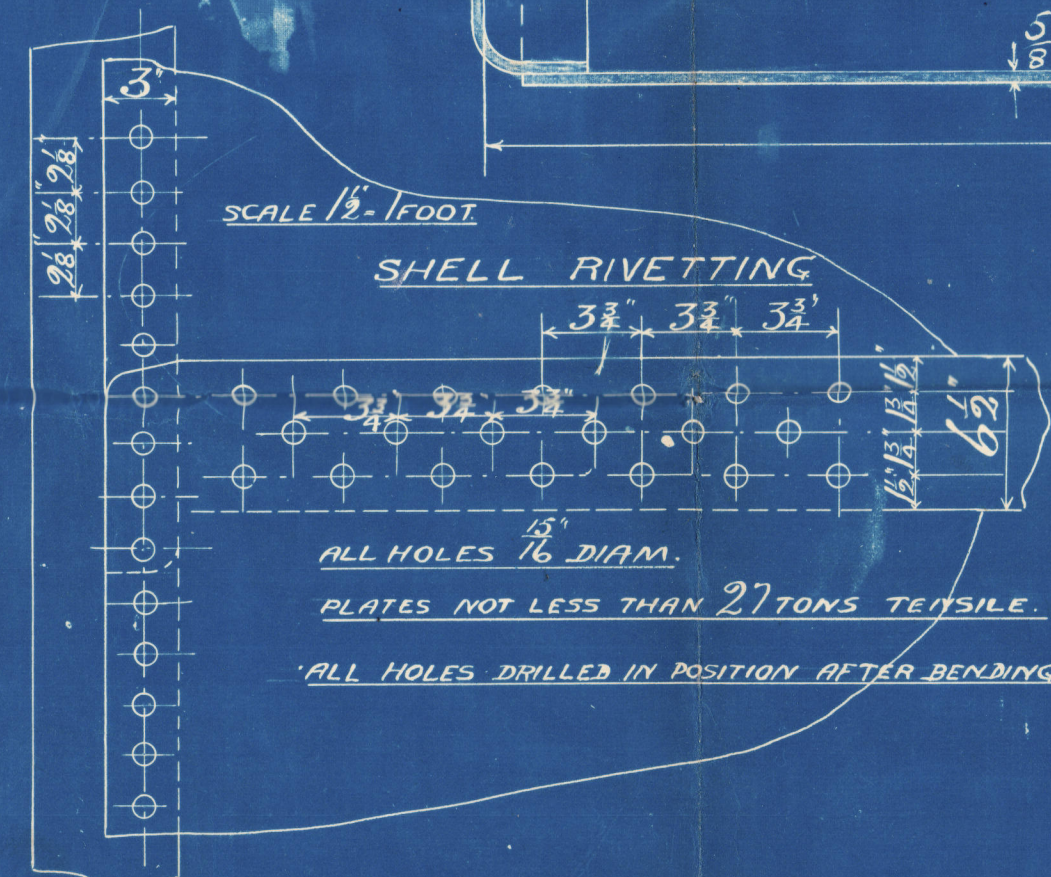
SCALE 1/4" = 1 FT.

N^o 3512 for Messrs The Sunderland Shipbuilding Co Ltd. S. I. No 232.

N^o 3525/6 for Messrs The Rlyth Shipbuilding Co Ltd. S. I. Nos. 124/5.



FLANGED MANHOLE 15 1/2" DIAM.
DEPTH OF FLANGE 2 3/8"
FLANGE FACED WITH GROOVED DOOR



THIS TOP ROW MARKED STEEL 1 1/2" EFF DIAM.

SCREW STEEL STAYS 1 1/4" EFF DIAM.
ALL SCREW STAYS 9 THREAD PER IN.
NUTTED BOTH ENDS

HEATING SURFACE
GRATE AREA

750 SQ. FT.
24.8 SQ. FT.



Wiley Bros & Co

Nos 3512

3525/6

Amundson and S.B.C. 80 No 232

Blyth S.B.C. & Co 80 No 124/5

100 lbs W.P.



20 plates
J.P. Medomley

Newcastle Report

SP^o 50079

No. 3490
LLOYD'S TEST.
200 lbs.
26-7-05
R.D.S.

ln
N 9 1/2 "Londoni"
ln
m Mdb report no. _____

No. 3496
LLOYD'S TEST.
200 lbs.
9 am
11-8-05

3512
Mdb report no 4251

No. 3553
LLOYD'S TEST.
200 lbs.
20-11-05
R.D.S.

3526
Mdb report no 4344
Lloyd's Register
Foundation
W676-0038