

3/5/20

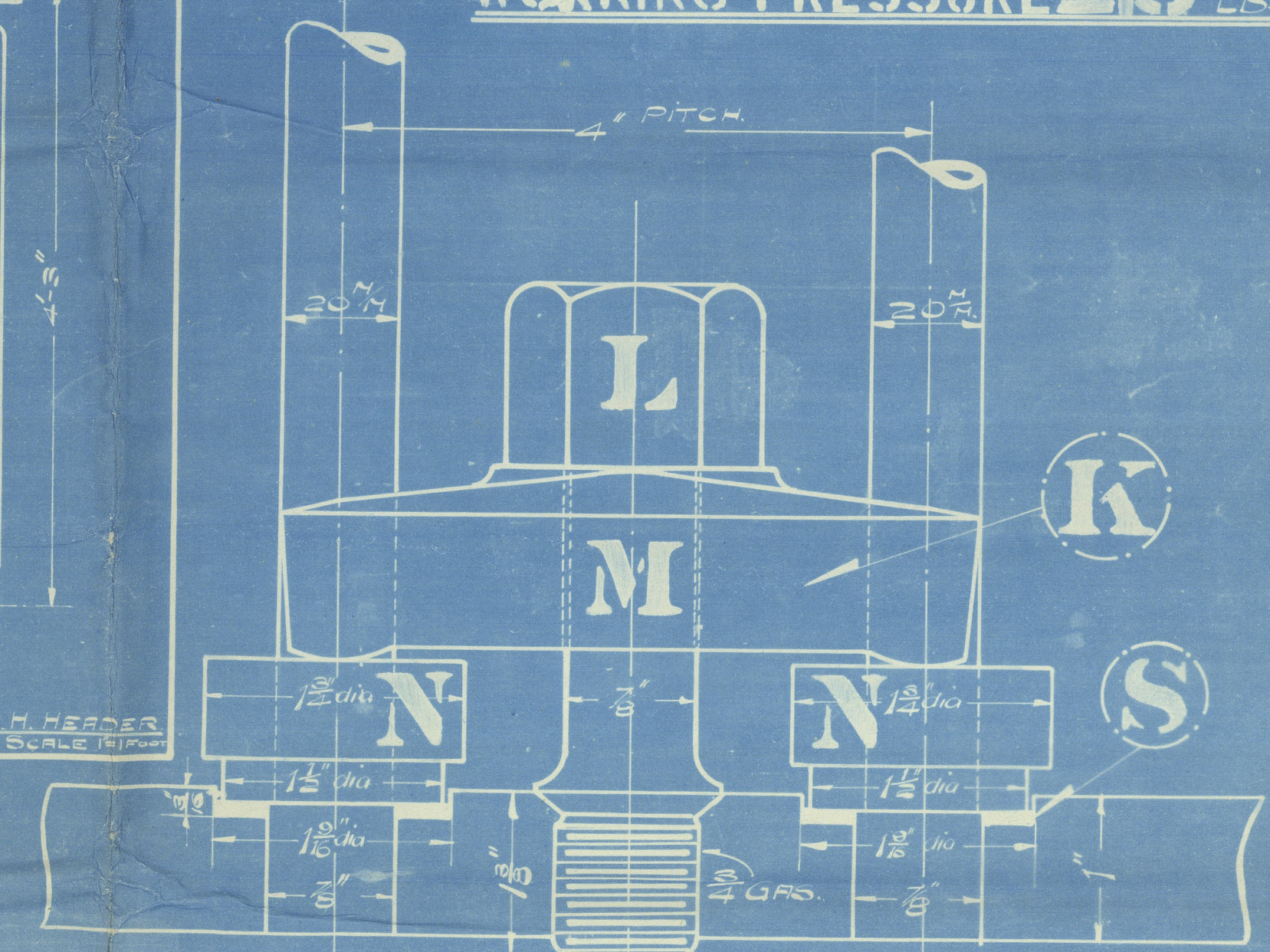
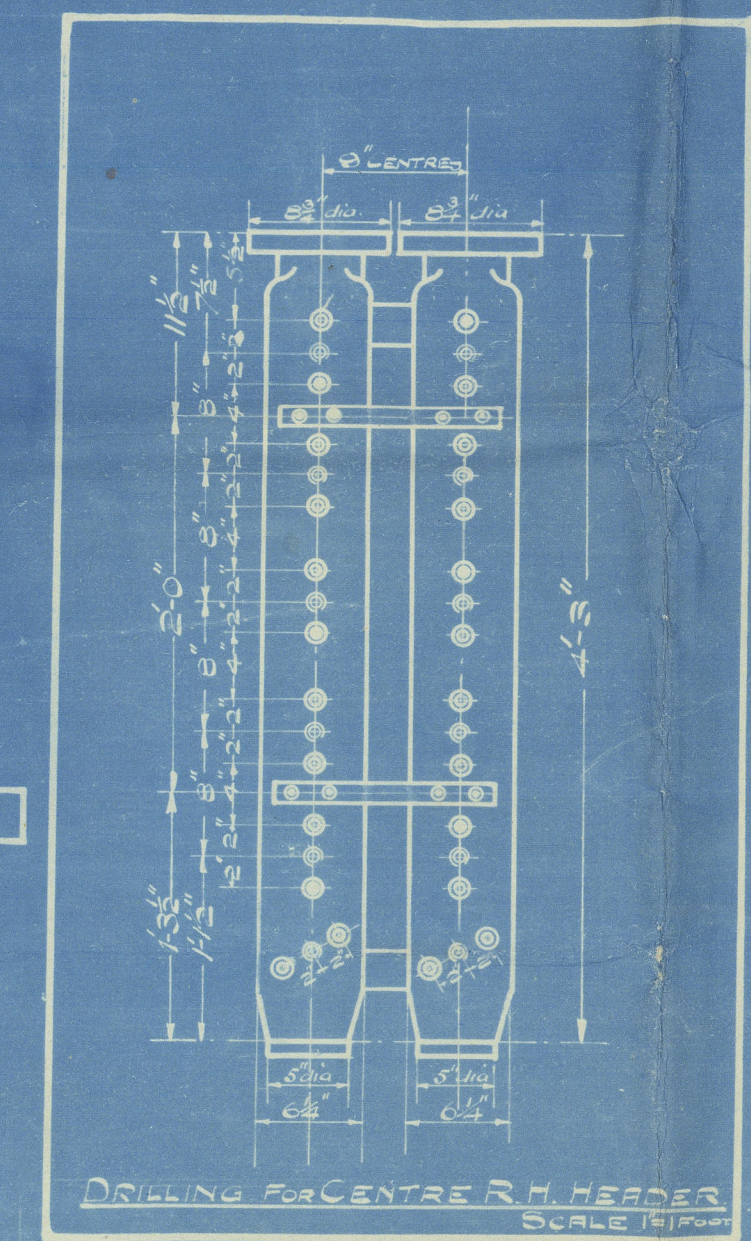
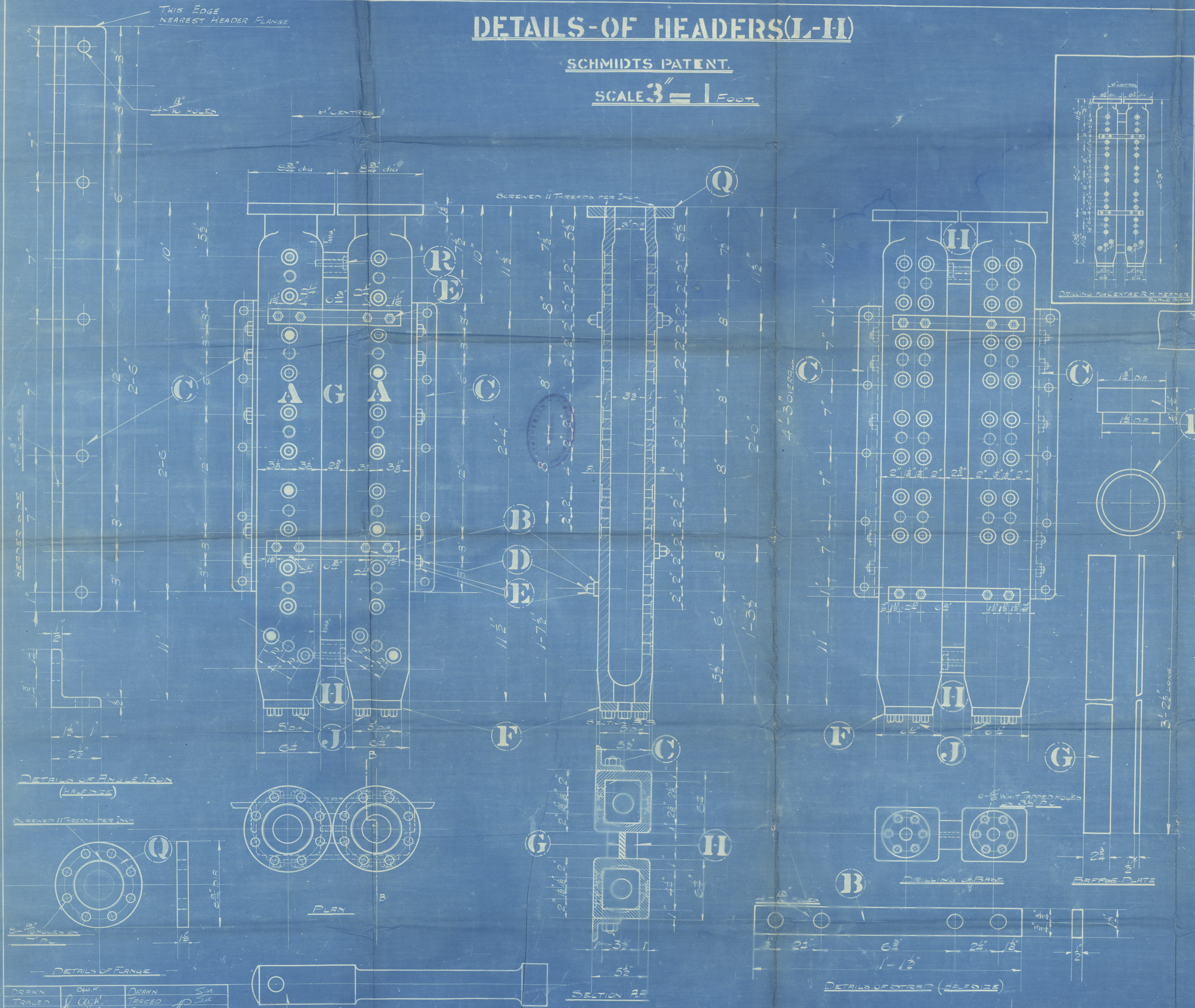
REF NO 40/3

DETAILS-OF HEADERS(L-II)

SCHMIDTS PATENT.

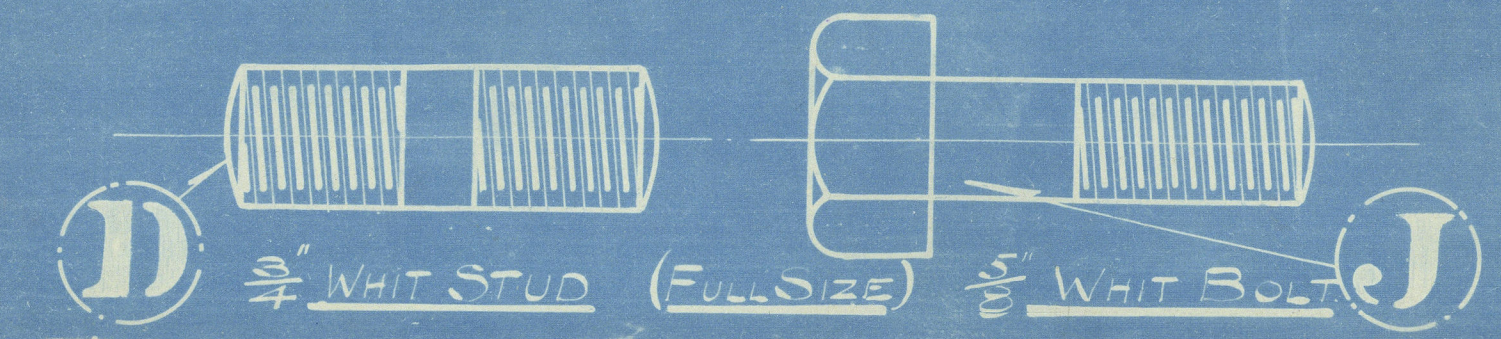
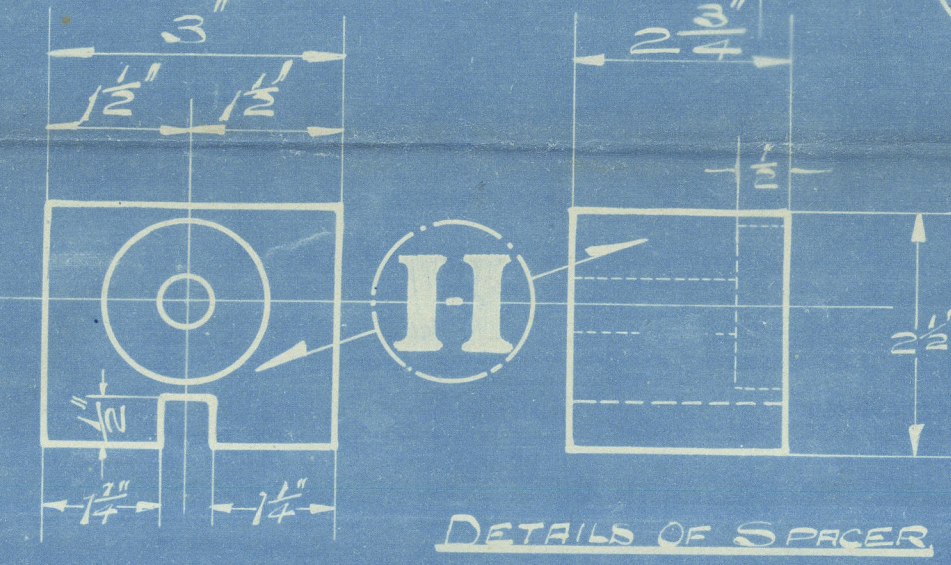
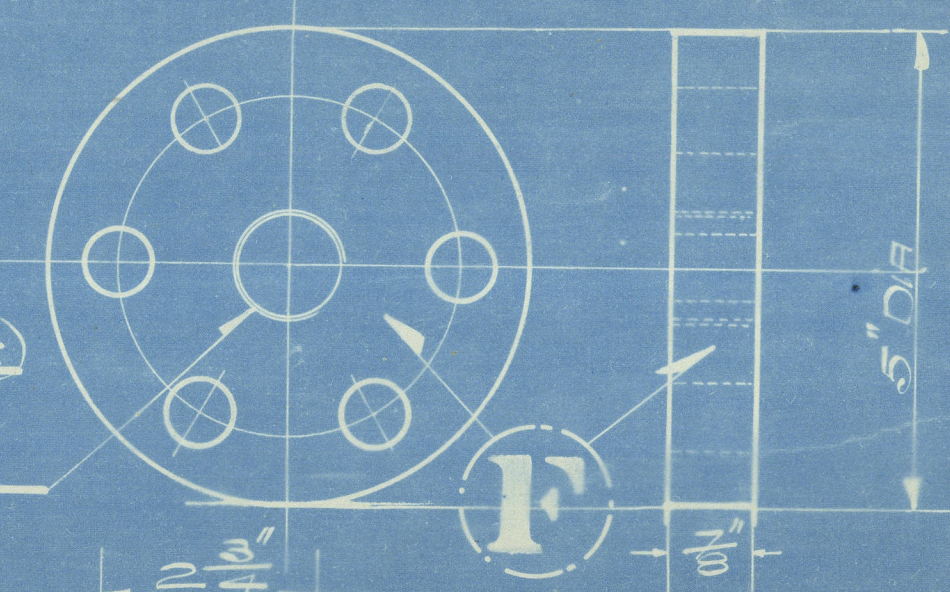
SCALE 3" = 1 FOOT.

TO PASS LLOYDS SURVEY
WORKING PRESSURE 215 LBS PER SQ IN



DETAILS OF DOG AS FITTED (FULL SIZE)

DETAILS OF BASE PLATE (HALF SIZE)



MARK	DESCRIPTION	QTY	MATERIAL	REMARKS
A	HEADERS	4	STEEL	
B	HEADER STRAPS	4	M.S.	
C	ANGLE IRON SUPPORTS	4	M.S.	SEE DRAWING
D	2" WHIT STUD	32	IRON	
E	2" BLACK IRON NUTS	32	IRON	
F	BASE PLATES	4	M.S.	
G	SPACERS	4	IRON	SEE DRAWING
H	2" WHIT BOLT	24	IRON	
I	2" WHIT DOG	4	STEEL	FOR IRON
J	2" BLACK IRON NUTS	32	IRON	
K	2" STUDS	32	M.S.	
L	2" COLLARS	4	M.S.	SEE DRAWING
M	2" BUSHING	4	M.S.	SEE DRAWING
N	2" BUSHING	4	M.S.	SEE DRAWING
O	2" BUSHING	4	M.S.	SEE DRAWING
P	2" BUSHING	4	M.S.	SEE DRAWING
Q	2" BUSHING	4	M.S.	SEE DRAWING

DRAWN	C.W.K.	DRAWN	C.W.K.
CHECKED	C.W.K.	CHECKED	C.W.K.
DATE	19.3.20.	DATE	24.3.20
DRAWING IN ANGLE IRON, ALTERED FROM 4-1/2 HOLES TO 5 3/8 HOLES.			

JOHN BROWN & CO. LTD Nos 596-7-8-9C

CONO338/9
DRC. NO B 353A

Thames & Locomotive
Superheaters Ltd.
(late Schmidt's Superheating Co)

Superheaters for
John Brown's
Contract Nos 596-7-8-9C
H.P. 215 H.P.



St. Bariboo. N° 599.

GLASGOW REPORT No. 45893

W675-0044



© 2020

Lloyd's Register
Foundation