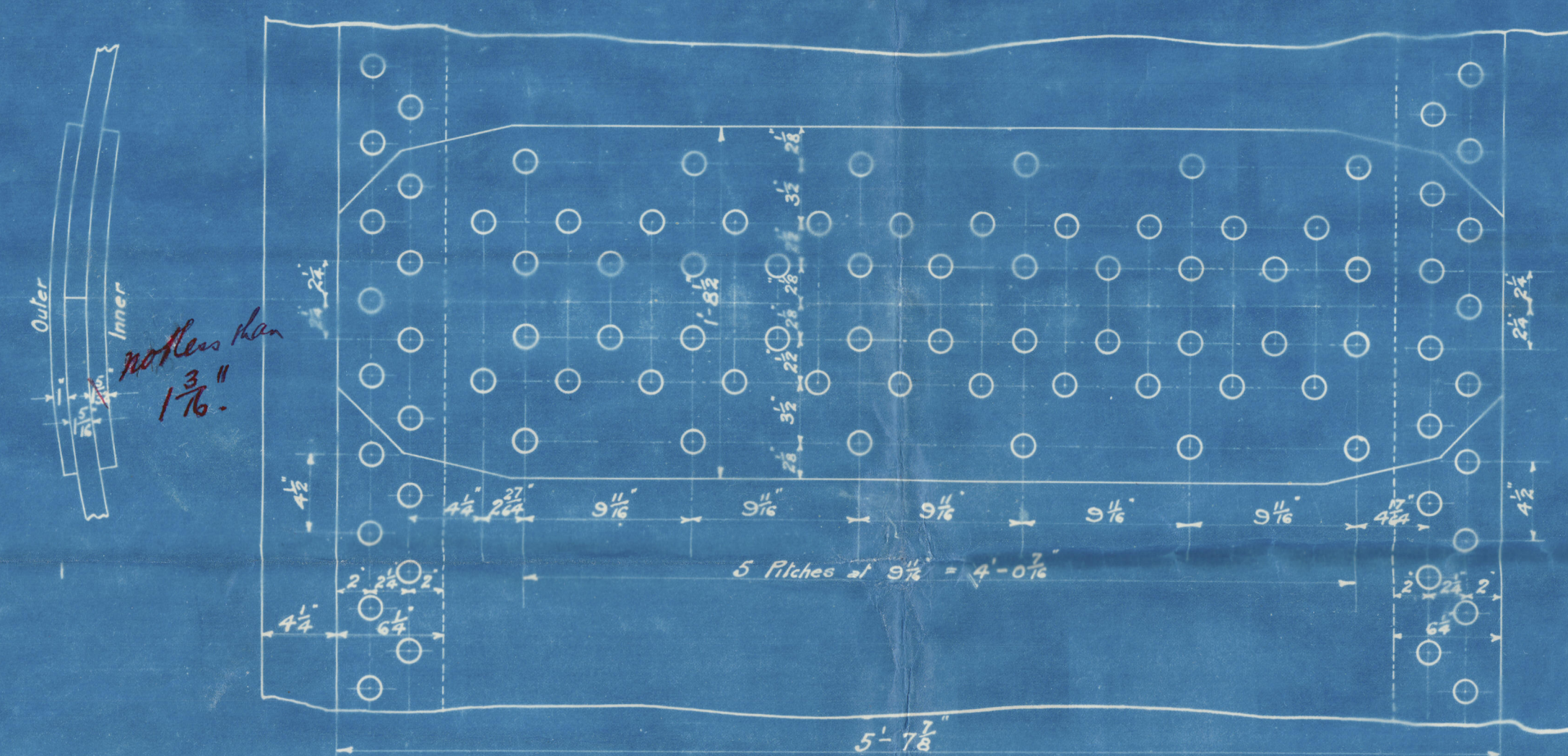
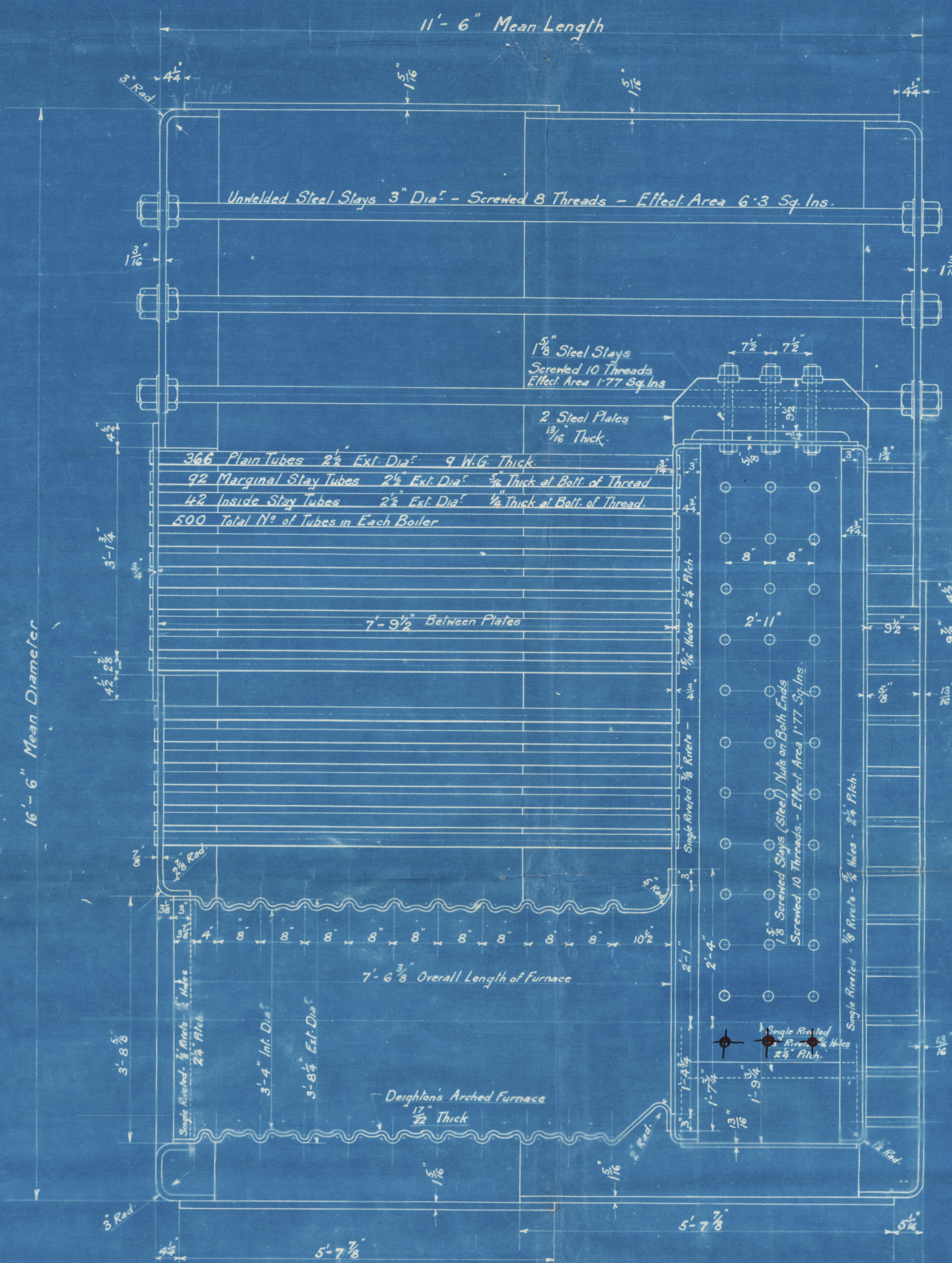
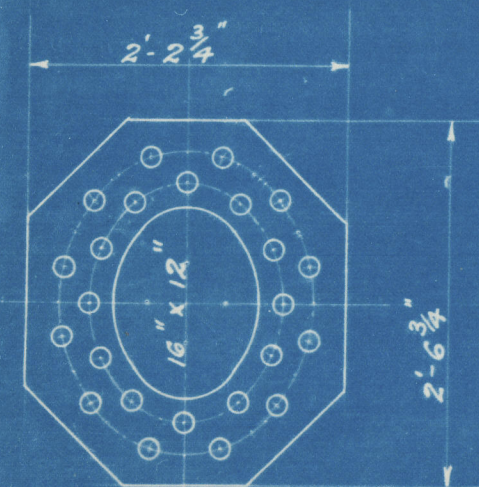
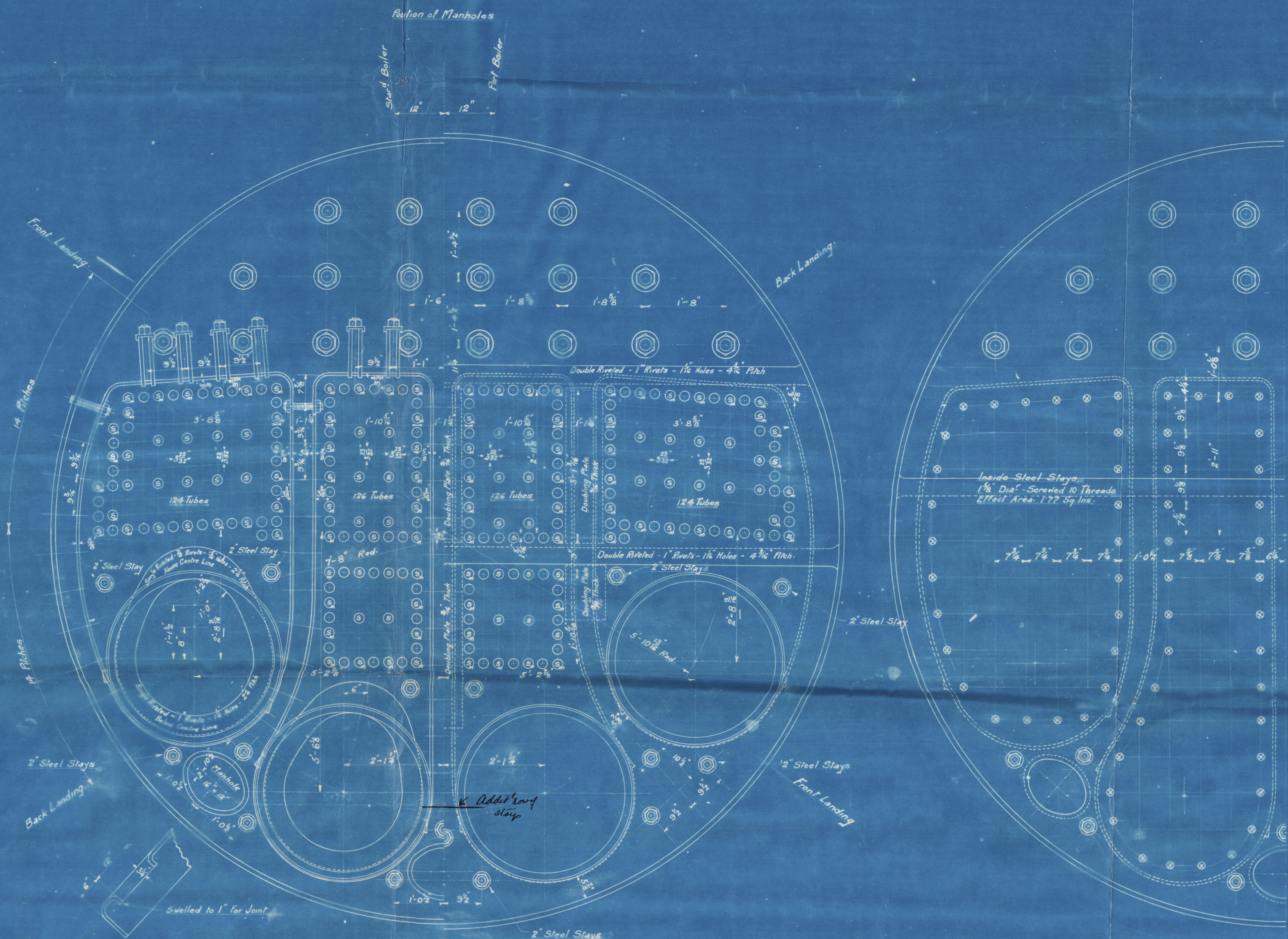


Manhole Compensating
Ring - 1/8" Thick
1/8" Rivet Holes



Bottom of Manholes
Solid Boiler
Perf. Boiler



Marginal Stays Blanked @
1 1/2" Dia" - Screwed 10 Threads
Effect Area 2.06 Sq. Ins.

All Steel Except Tubes

Longit. Seams - 1 3/8" Rivet Holes - Joint
Circum. Seams - 1 3/8" Rivet Holes
Tensile Strength of Shell Plates 28 to 32 Tons
" " of End Plates and Combustion Chamber Plates 26 to 30 Tons
" " of Steam Space Stays 28 to 29 Tons

	Heating Surfaces	
	1 Boiler	2 Boilers
Tubes	2550 f	5100 f
Other	382 f	1164 f
Total	3132 f	6264 f
Grate Area	Bars	

MAIN BOILERS

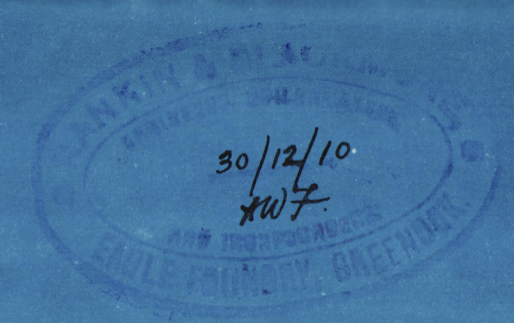
2 - OFF

To Pass Lloyd's Survey For 180 lbs. of W.P.

Scale: 3/4" = 1 Foot

N^{os} 297

transferred to No 313



318 11 23 38 78 51
26

Muel Stue Mann Boeis



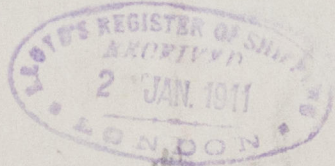
20294513

Rankin & Blue Kinou
for

Russell 487, N. 626 81,

180 H.P. Working Pressure

REMAINED



*297 main Boeis
transferred to Russell
487. The new Boeis for 497
are there in numbers.*

*S. S. "Seig & Maria"
Greenock Report N° 16520.*

W1671- ©18920



Lloyd's Register
Foundation