

9L10-L9M

RIVETING IN LONGITUD RIVETS EACH IN SIDE OF BUTT BRACKETS 7/8 DIA 7/8 DIA 7/8 DIA

RIVETS SPACED 6 DIA APART 6 5

RIVETS SPACED 5 DIA FOR 10 RIVETS EACH SIDE OF TRANSVERSE & BH 6 DIA ELSEWHERE 8 7 8 8 8 8 6 6

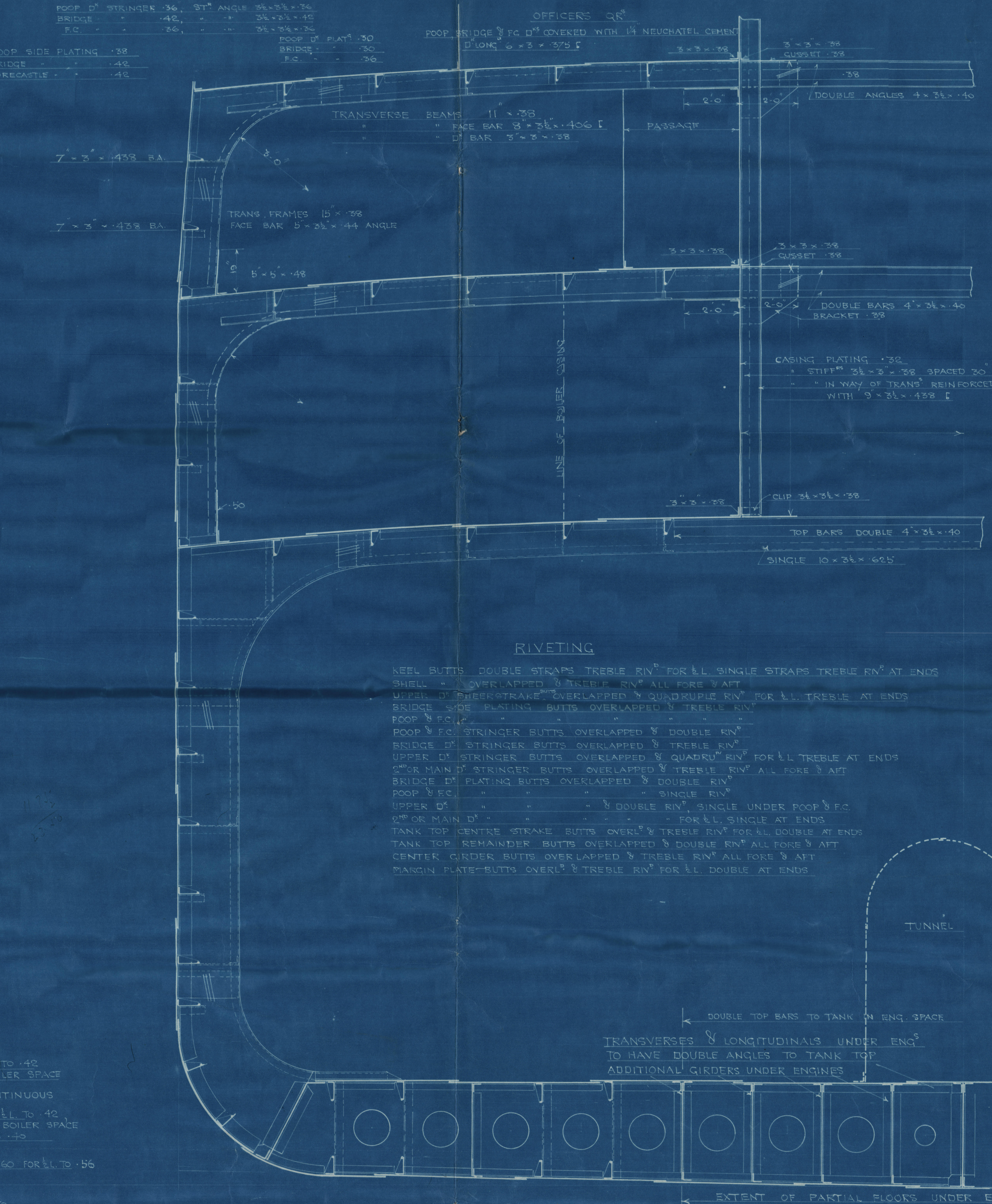
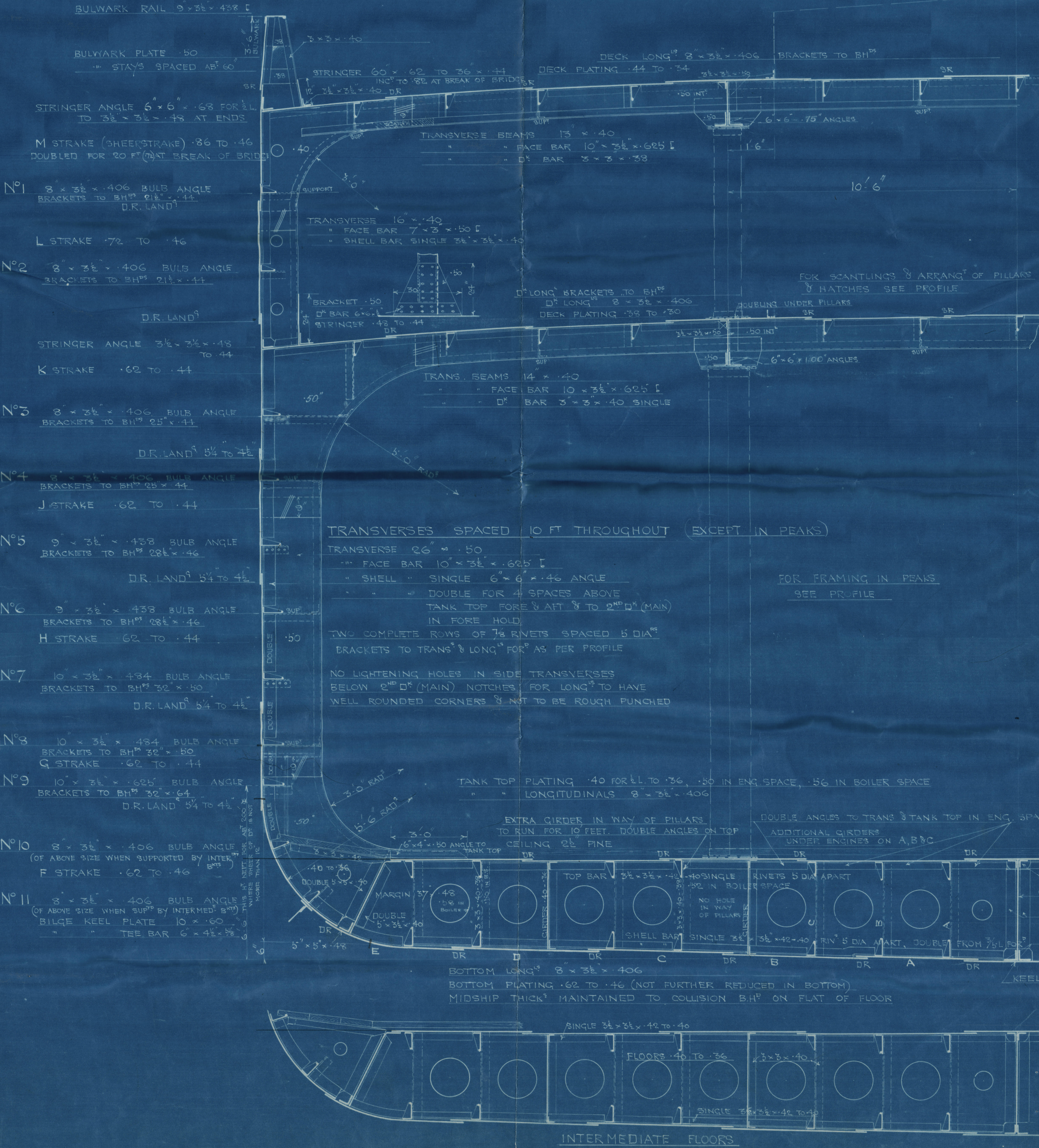
RIVETS SPACED 4 DIA FOR 10 RIVETS EACH SIDE OF TRANSVERSE & BH 6 DIA ELSEWHERE 6 6

TANK TOP LONG RIVETS SPACED 5 DIA FOR 4 RIVETS EACH SIDE OF TRANSVERSE, INTERMED TRANSVERSE & BH 6 DIA ELSEWHERE

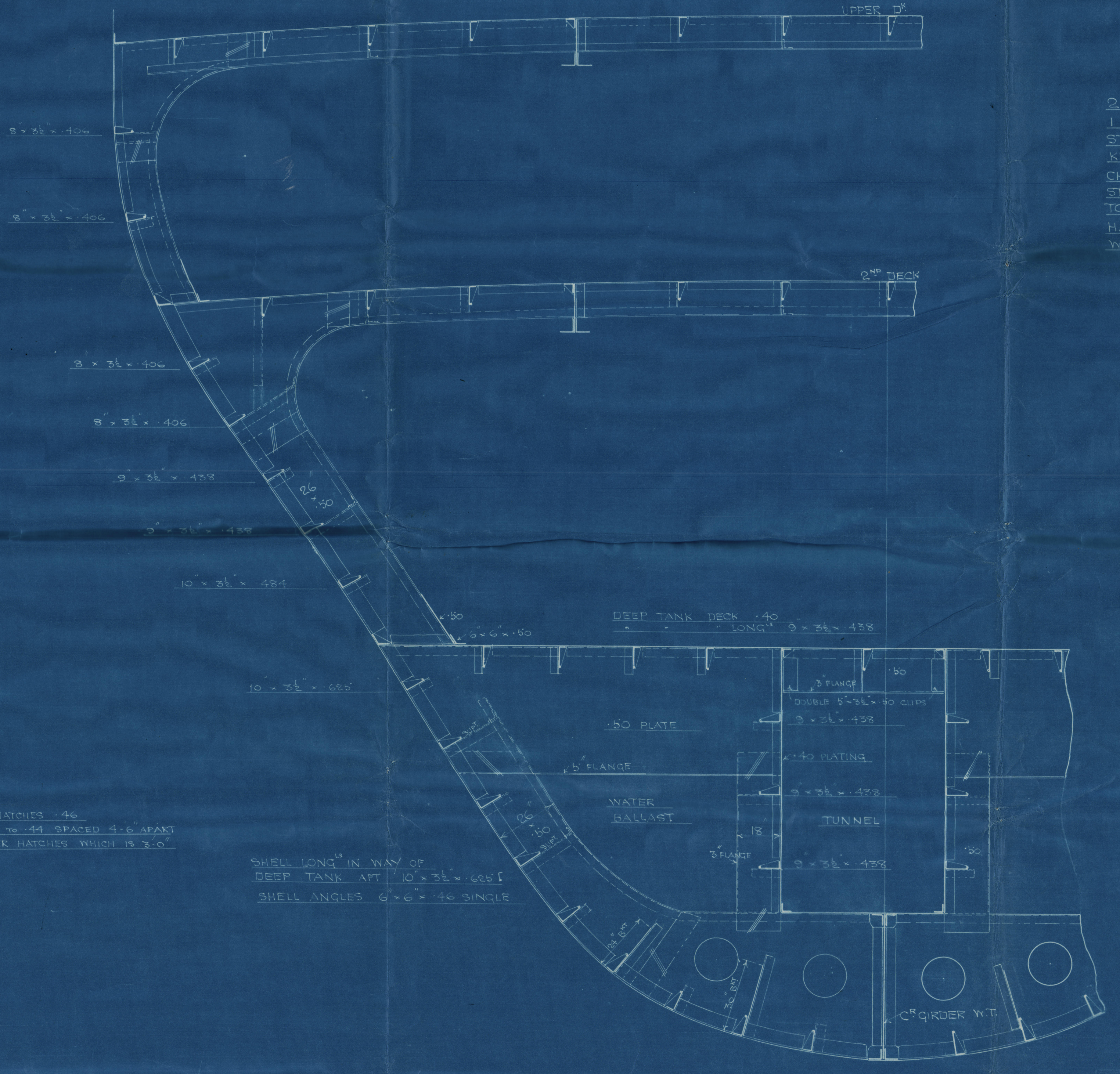
BOTTOM LONG RIVETS SPACED 4 DIA FOR 4 RIVETS EACH SIDE OF TRANSVERSE, INTERMED TRANSVERSE & BH 6 DIA ELSEWHERE

PLATE GIRDERS IN BOTTOM RIVETS SPACED 7 DIA

DECK LONG ALL DECKS RIVETS SPACED 6 DIA



SECTION IN WAY OF E & B SPACE



SECTION IN WAY OF DEEP TANK AFT TRANSVERSE 12 & 13

MIN DIMENSIONS 400' x 56' x 30'

LLOYDS 1st No. 83 2nd No. 35200 EQUIP No. 36254 1/12.5

ANCHORS & CHAINS

2 BOWERS (STOCKLESS)	7140	EACH
1 BOWER	6104	EACH
STREAM	2450	
KEG	1050	
CHAIN CABLE	270	FATH
STEAM CHAIN	30	14' OR 42' STEEL WIRE
TOWLINE	120	14' HEMP OR 5' STEEL WIRE
HAWKERS	2 @ 30	8' MANILA
YARDS	2 @ 30	7'

UNION IRON WORKS CO. SAN FRANCISCO, CAL. HULL DEPT. LLOYDS MIDSHIP SECTION FOR HULLS 110 & 120 SCALE 1/2" = ONE FOOT 17821

Midship Section N^o 119 & 120

W67-0176



© 2020

Lloyd's Register
Foundation

The Union Iron Works.

No. 119, 120 & 126.

Midship. Section

No 119. S/S. "Pacific:"

S. To rpt. No 2251.

~~No 120. S/S. "Eurana:"~~

~~S. To rpt. No 2269.~~

No 126. S/S. "Davanger:"

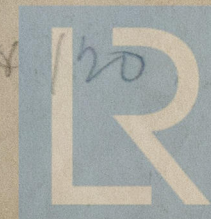
S. To rpt. No. 2365.



W67-0176

W67-0176

Midship Section No 119 & 120



© 2020

Lloyd's Register
Foundation