

MIDSHIP SECTION

SCALE 1/2" = 1 FOOT

- No 262 S.S. -

To CLASS 100A. LLOYD'S 3 DECK RULE

- NUMERALS -

1/2 GIRTH = 54.02
1/2 BREADTH = 24.52
DEPTH = 33.23

111.77
-7.
104.77 = FRAMING NO
x 408.08
42754.5 = PLATING NO

- PROPORTIONS -

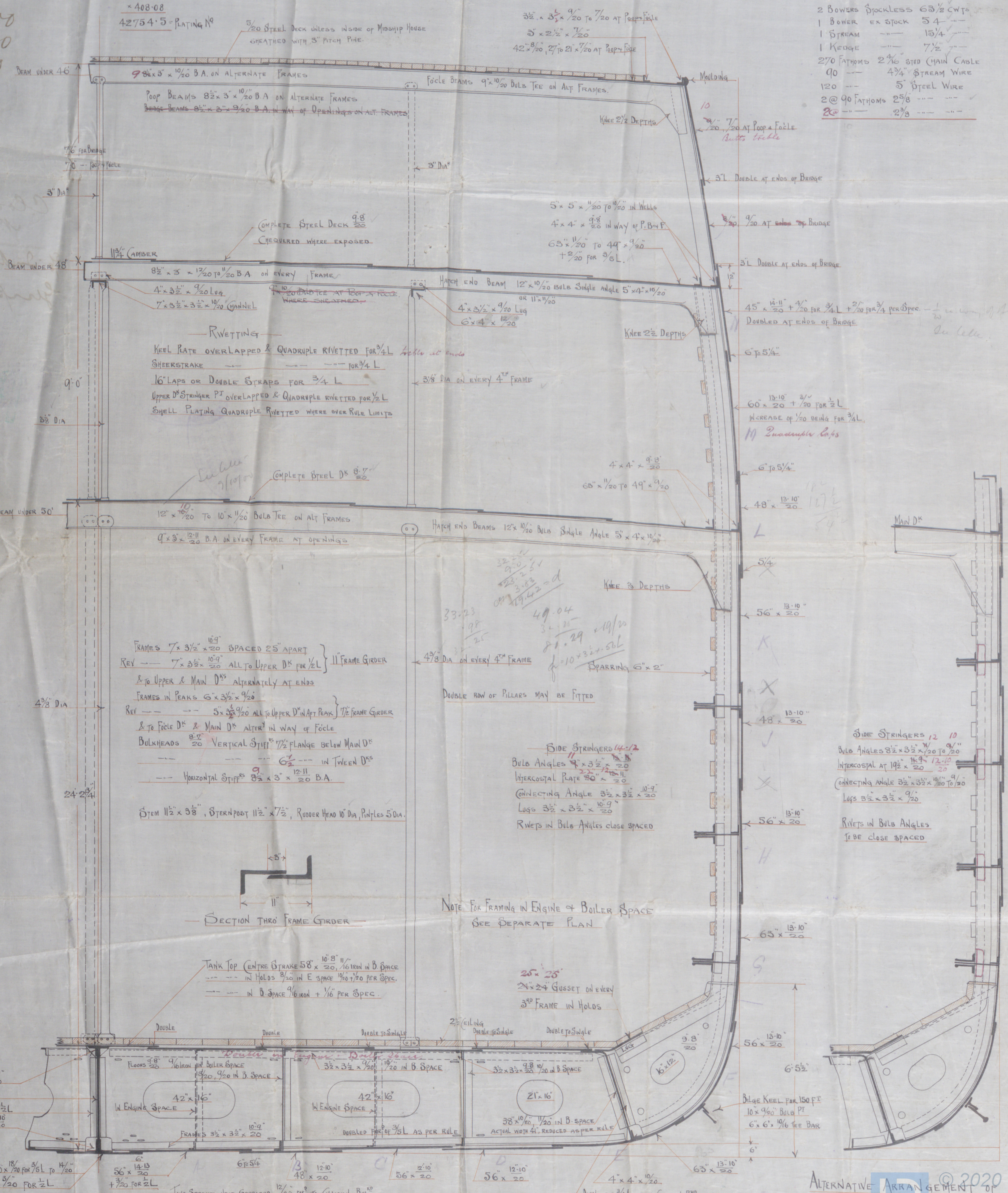
DEPTH TO UPPER D^S = 12.28
MAIN = 16.80
BREADTH = 8.32

- EQUIPMENT -

111.77 x 408.08 = 45611 + (225 of 45611 x 408.08) = 48754 Equip No

2 BOWERS STOCKLESS 63 1/2 CWT
1 BOWER EX STOCK 54
1 STREAM 15 1/4
1 KEDGE 7 1/2
270 FATHOMS 2 1/16 STD (MAIN CABLE)
90 4 3/4 STREAM WIRE
120 5 STEEL WIRE
2 @ 90 FATHOMS 2 5/8
20 2 3/8

29.9.00
9.10.00
19.10.00
24.10.00
19.11.00



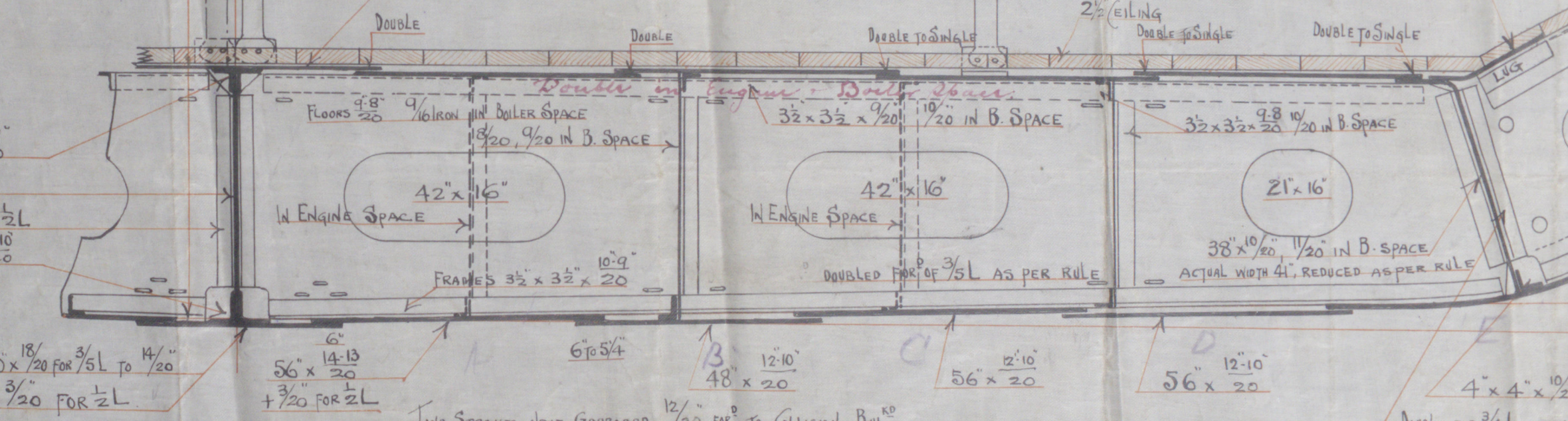
SECTION THRU FRAME GIRDER

NOTE FOR FRAMING IN ENGINE & BOILER SPACE
SEE SEPARATE PLAN

SIDE STRINGERS 12 10
BULB ANGLES 8 1/2 x 3 1/2 x 1/20 TO 9/20
INTERCOSTAL AT 19 1/2 x 20
CONNECTING ANGLE 3 1/2 x 3 1/2 x 1/20 TO 9/20
LUGS 3 1/2 x 3 1/2 x 9/20
RIVETS IN BULB ANGLES
TO BE CLOSE SPACED

SIDE STRINGERS 14-12
BULB ANGLES 4 x 3 1/2 x 1/20
INTERCOSTAL PLATE 20 x 20
CONNECTING ANGLE 3 1/2 x 3 1/2 x 10-9
LUGS 3 1/2 x 3 1/2 x 10-9
RIVETS IN BULB ANGLES CLOSE SPACED

FRAMES 7 x 3 1/2 x 10-9 SPACED 25" APART
REV --- 7 x 3 1/2 x 10-9 ALL TO UPPER D^S FOR 1/2 L
& TO UPPER & MAIN D^S ALTERNATELY AT ENDS
FRAMES IN PEAKS 6 x 3 1/2 x 9/20
REV --- 5 x 3 1/2 x 9/20 ALL TO UPPER D^S IN PEAKS
& TO FOCLE D^S & MAIN D^S ALTERNATELY IN WAY OF FOCLE
BULKHEADS 8 1/2 x 20 VERTICAL STIFF 1 1/2 FLANGE BELOW MAIN D^S
--- 6 1/2 --- IN TWEEN D^S
--- HORIZONTAL STIFF 9 1/2 x 3 x 20 B.A.
STEM 11 1/2 x 3 1/2, STERNPOST 11 1/2 x 7 1/2, RUDDER HEAD 10 DIA, PINPLES 5 DIA.



ALTERNATIVE ARRANGEMENT OF

C. CONNELL & CO. SHIPBUILDERS, GLASGOW.
Lloyd's Register Foundation

C. Connell & Co
N. 762

5/5. Indrasamha
Gurp no 9203



© 2020

Lloyd's Register
Foundation