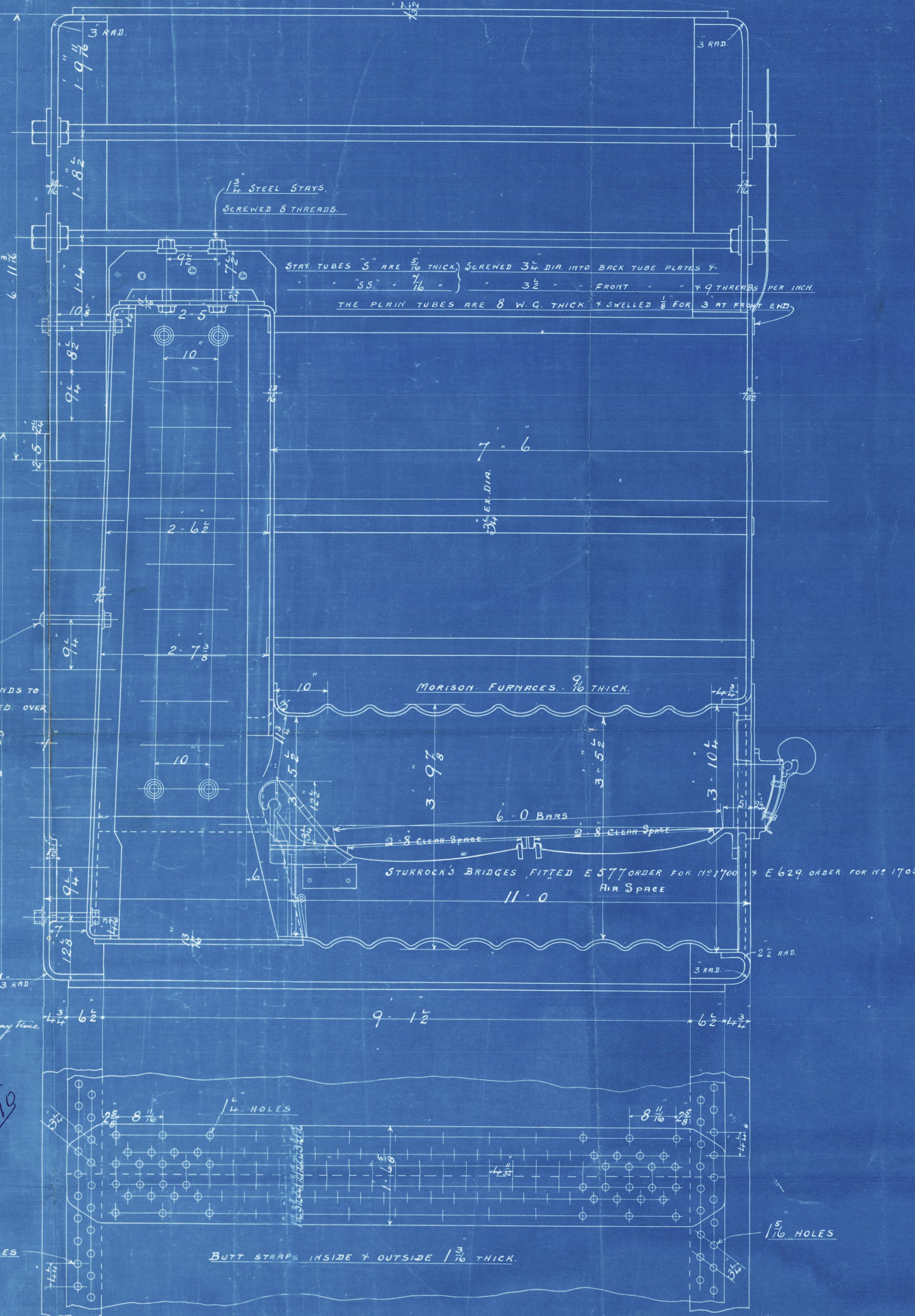
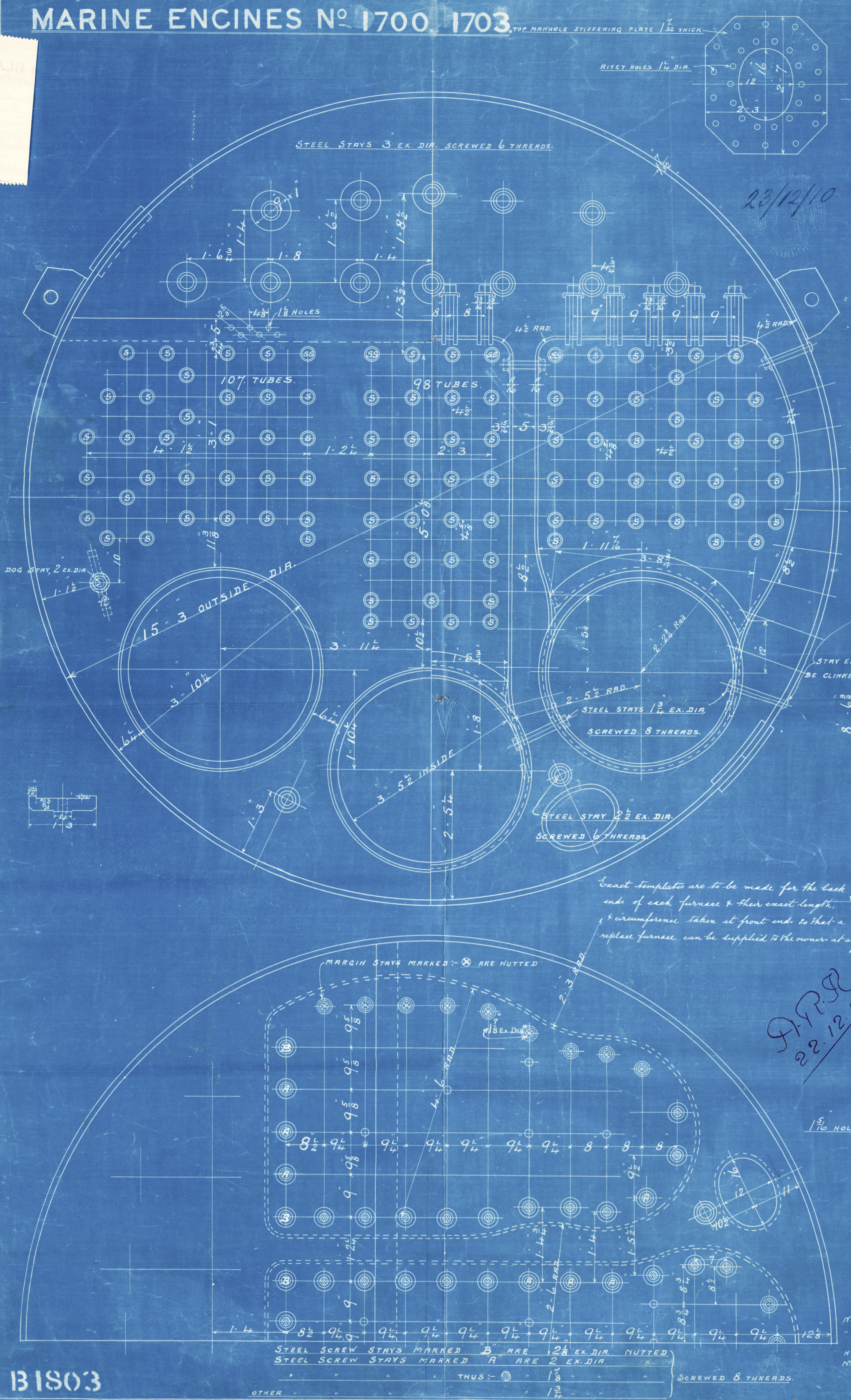


MARINE ENGINES N° 1700 1703

BOILERS.

SCALE 1 INCH TO A FOOT.

180. LBS. WORKING PRESSURE. 3" OFF



APR 22 12/10

TOTAL HEATING SURFACE IN THREE BOILERS = 7114. SQ. FEET

" GRATE " " " = 190. " " (6.0 BARS)

THE MINIMUM TENSILE STRENGTH OF SHELL & GIRDER PLATES IS TAKEN AT 28 TONS PER SQ. INCH.

N° 1700 E 578 order } Back of Boiler covered with sheet iron forming screen between engine & boiler
N° 1703 E 630 } & carried down to tank top.

N° 1700 E 579 order } asbestos matted on boiler bottom in sections & easily removable
N° 1703 E 631 }

Head of Drain Plug inside boiler with taper where fitted through shell plating & fitted with Jam Nut on bottom in accordance with our usual practice
N° 1700 E 580 set of "gunned board" supplied
N° 1703 E 632

BLAIR & COY., LTD.
ENGINEERS,
19 DEC 10
STOCKTON-ON-TEES.

B1803

W 668-0110 2/12

Dec. 19th 1910
190

From BLAIR & CO., Ltd.,
STOCKTON-ON-TEES.

To

R

© 2020

Engineers & Surveyors
Middlesbrough.

Lloyd's Register
Foundation

Boilers

Engines 16 1700, 1703.

B 1803

W668-0110 1/2

Messrs Blair & Co Lim^d

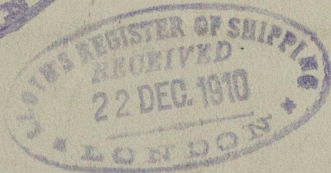
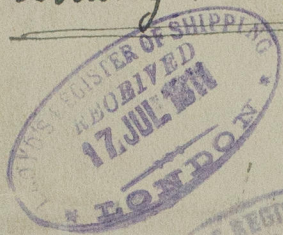
Boiler nos 1700
1703

for

Messrs Sir R. Dixon's S.S. no 559
&

Messrs J. F. Thompson & Sons " 481
Respectively

Working Pressure 180 lbs.



1700

No.	4633
LLOYD'S TEST.	
	360 lbs.
	27.4.11
	WM

Maru
S.S. Jempaisan
Mdb Rpt no 6868
Sld Rpt no 24908

1703

No.	4609
LLOYD'S TEST.	
	360 lbs.
	24.3.11
	WM

S.S. Kinkasan Maru
Mdb Rpt N°

W668-0110



© 2020

Lloyd's Register