

PATENT CANTILEVER TYPE.

DEPTH TO LENGTH UPPER DR. = 12.83 ✓
" " " BRIDGE " = 10.10 ✓

NUMERALS:-
BREADTH 53.25 ✓
DEPTH ^(29.5)_(12.125) 29.62 ✓
82.87 = FRAME N° ✓
LENGTH 380 ✓
31490 = PLATING N° ✓

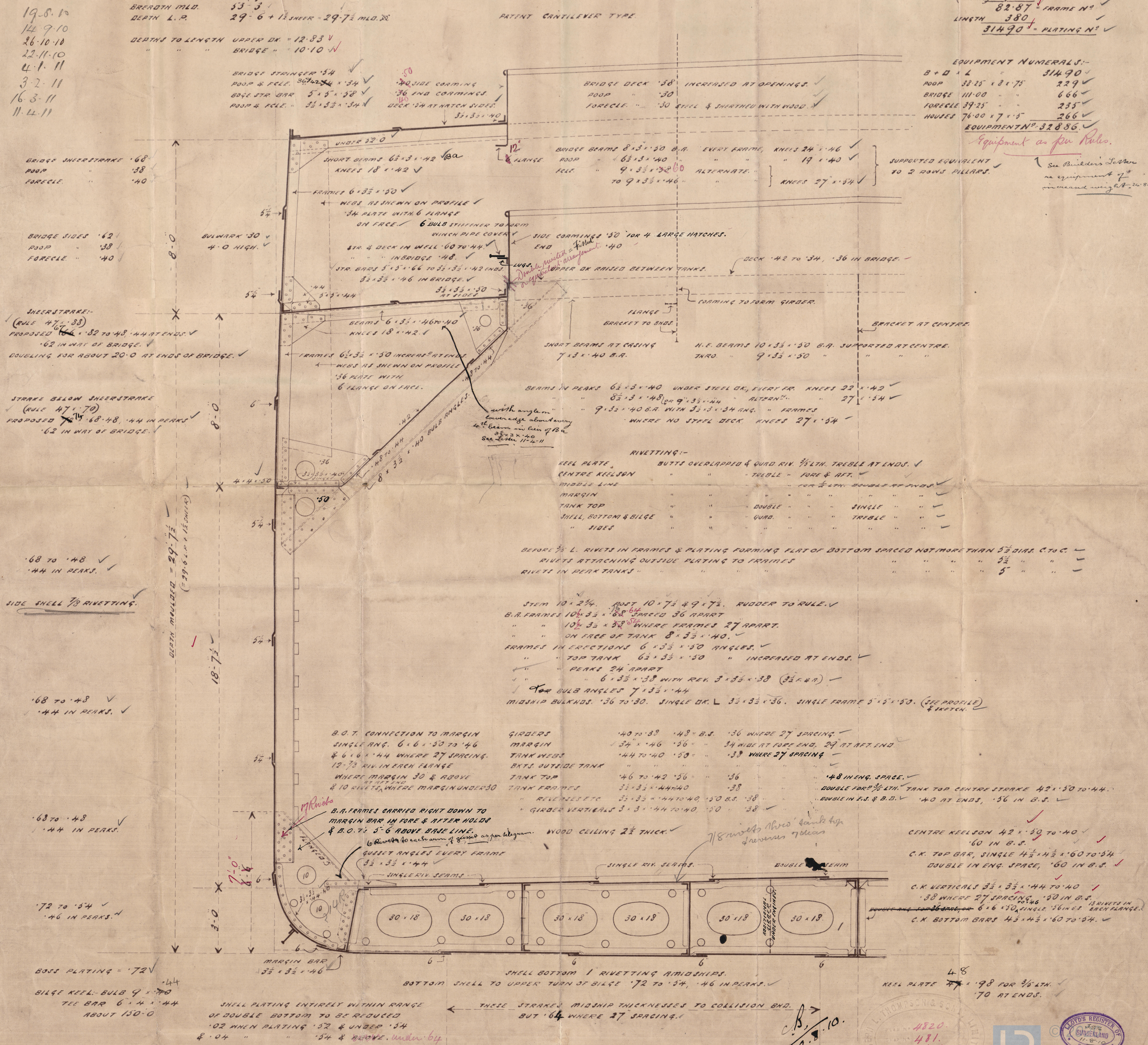
EQUIPMENT NUMERALS:-

B + D x L	=	31490 ✓
POOP	38.25 x 8 x .75	229 ✓
BRIDGE	111.00 " "	666 ✓
FOREGLE	39.25 " "	235 ✓
HOUSES	76.00 x 7 x .5	266 ✓

EQUIPMENT N^o-32886

Equipment as per Rules.

1 See Builders' Letter
re equipment of
increased weight. 24.8.



A circular ink stamp from J. L. Thompson & Son, Ltd. is visible in the upper left corner of the document. The stamp contains the following handwritten information: "PLAN NO. 4820.", "STEP NO. 481.", and "DATE 10/8/10." The stamp is partially overlapping the typed text.



Lloyd's Register of Shipping
Sunderland
11.8.10

J & Co. Ltd

No 481

Section.

SLD 7th Rpt 74888

LOYD'S REGISTER OF SHIPPI
REGISTERED
12 AUG 1910
LONDON

LOYD'S REGISTER OF SHIPPI
REGISTERED
12 AUG 1910
LONDON

LOYD'S REGISTER OF SHIPPI
REGISTERED
12 AUG 1910
LONDON

LOYD'S REGISTER OF SHIPPI
REGISTERED
19 OCT 1910
LONDON

LOYD'S REGISTER OF SHIPPI
REGISTERED
17 JUL 1911
LONDON

LOYD'S REGISTER OF SHIPPI
REGISTERED
17 JUL 1911
LONDON

LOYD'S REGISTER OF SHIPPI
REGISTERED
3 FEB 1911
LONDON

TENPAISAN MARU

SLD Rpt 24908

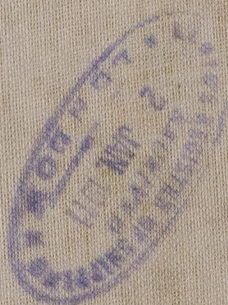
RETAIN



© 2020

Lloyd's Register
Foundation

W668-0108



© 2020

Lloyd's Register
Foundation