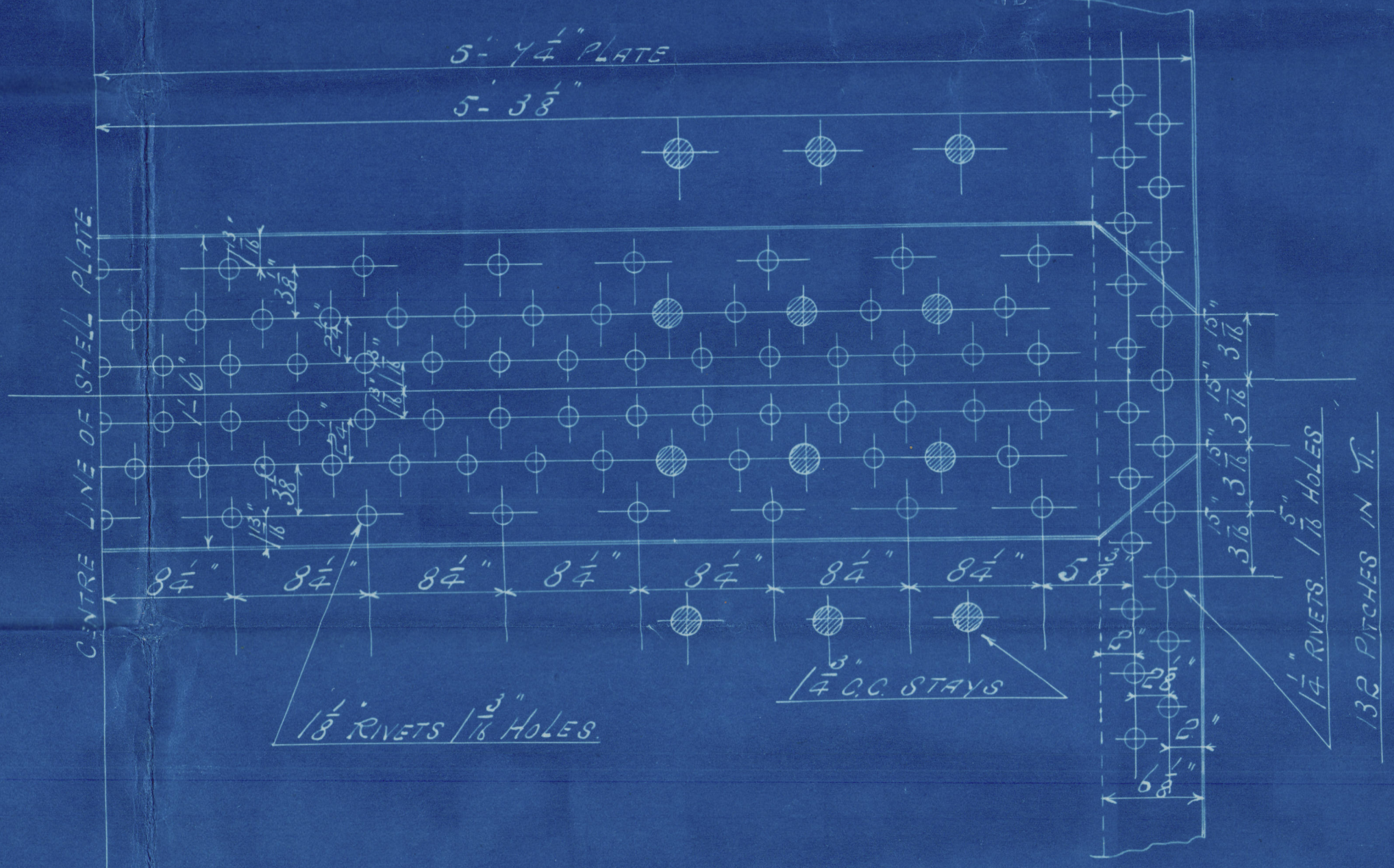
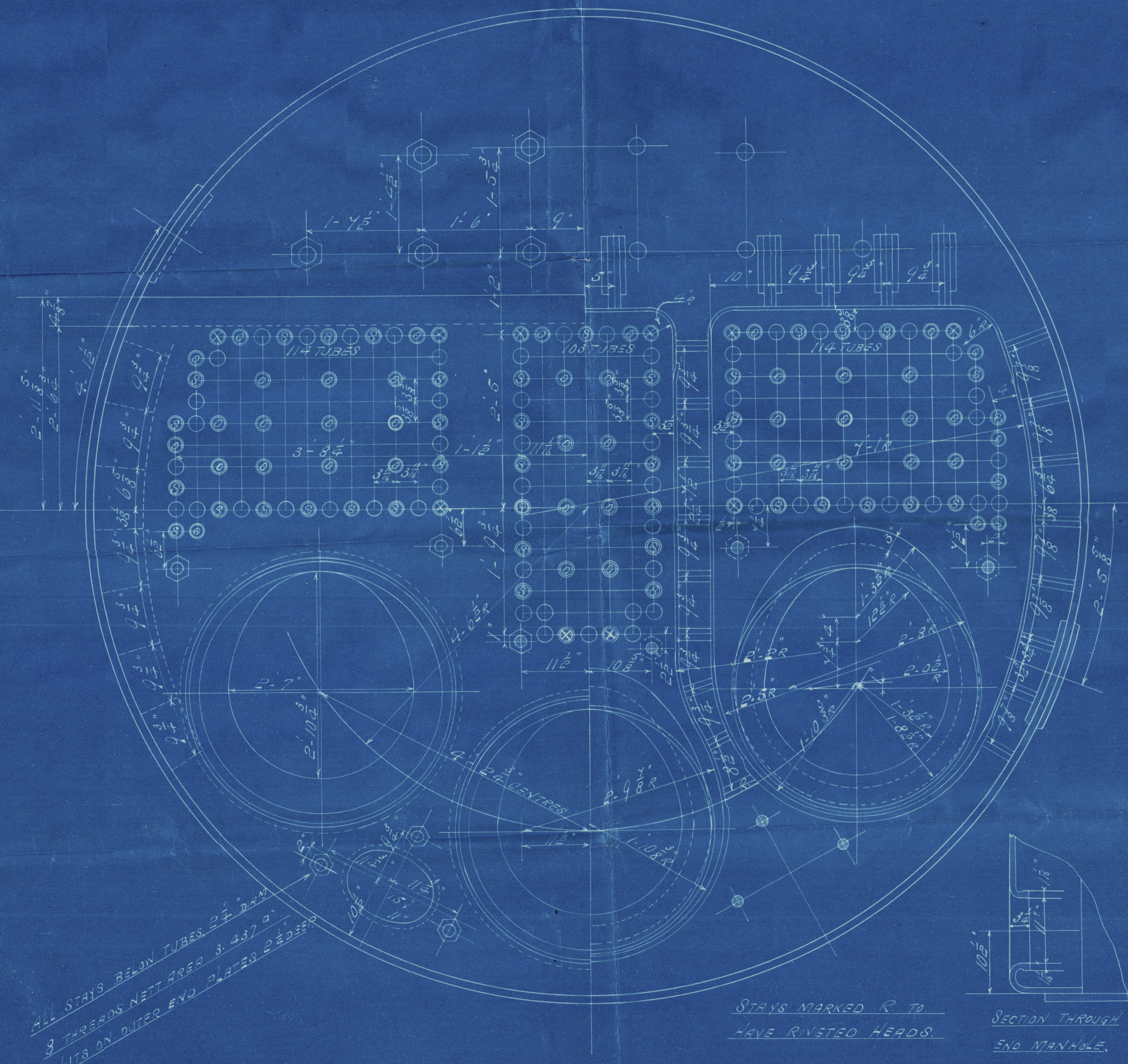
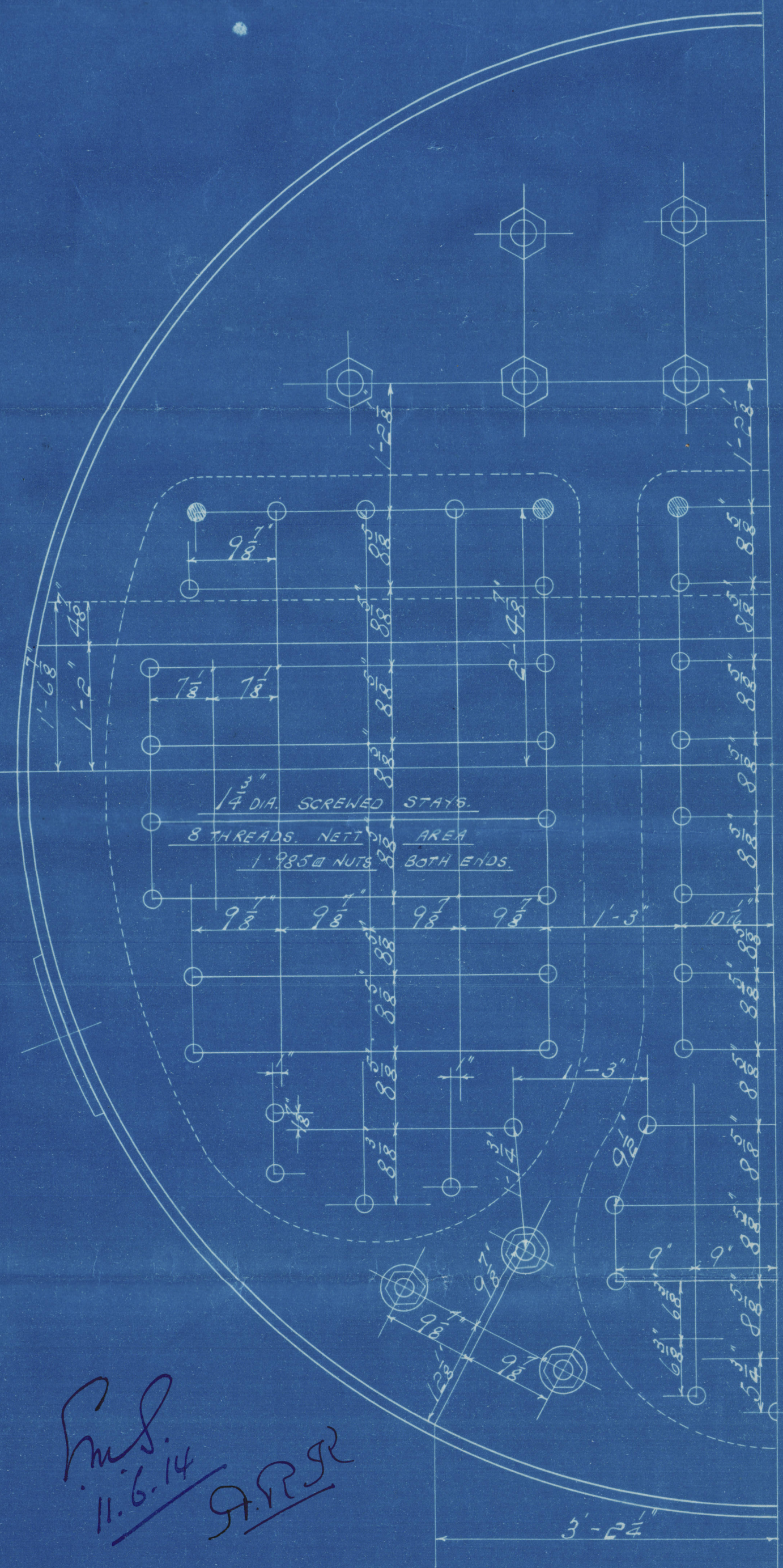
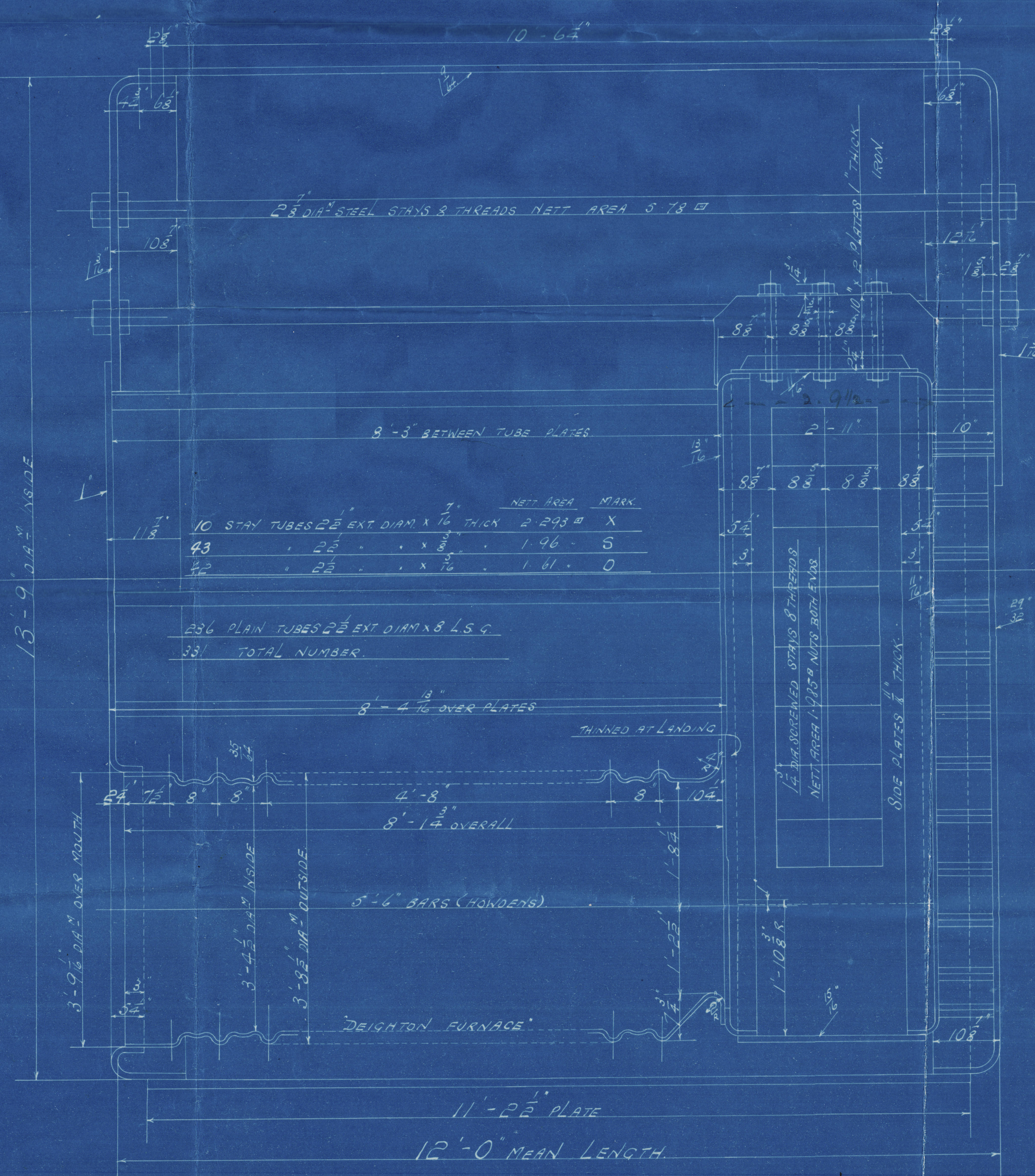


PARTICULARS	
HEATING SURFACE IN 33 TUBES	1784.9
3 COMB CHAS	238.
3 FURNACES	173.
TOTAL	2203.
GRATE SURFACE (5-6" BARS)	55.7
AREA THRU TUBES	8.
RATIO: HEATING SURFACE / GRATE SURFACE	= 39.6
GRATE SURFACE / AREA THRU TUBES	= 6.96
STEAM SPACE CU. FT.	375.



PARTICULARS	
LONGITUDINAL SEAMS (DOUBLE BUTT STRAPS)	
SHELL 1/4\"	
BUTT STRAPS 1/8\"	
CIRCUMFERENTIAL SEAMS:	
RIVETS 1/4\"	
ALL HOLES DRILLED IN PLATE, BOILER STEEL, TUBES & COMB CH, GIRDERS OF IRON. UNDER LLOYD'S SURVEY FOR WORKING PRESSURE OF 185 LBS. PER SQ. INCH.	



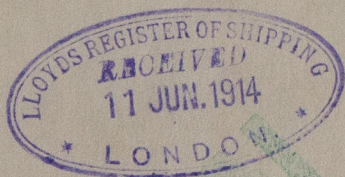
ONE BOILER FOR N° B 42.  
SCALE 1" = 1 FOOT



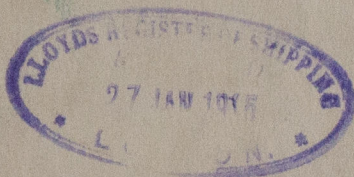


Dunn & Co. Jackson B 42  
W.P. 185.115. 10/6/14  
for James Henderson & Co. Ltd.  
Glasgow

GLASGOW REPORT No. 34768



Boiler now at Dry Dock  
& is now for Sale  
Henderson



Now fitted on board  
S/S "FAVORITA" & "WITIAZ"

For & boiler.



Lloyd's Register  
Foundation

W600-0168