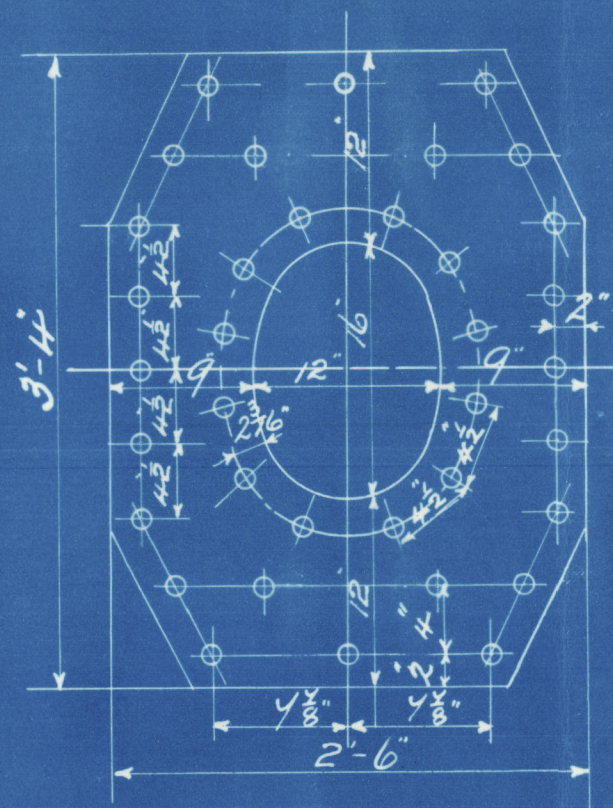


DIAM OF BOILER 14' 0" outside dia
 LENGTH OF DO 11' 0" over plates
 NUMBER OF TUBES 232
 LENGTH OF DO 4' 0 1/2" between plates
 DIA OF DO 3 1/2" AREA THRO THRO 9.9 sq ft
 HEATING SURFACE IN TUBES 1390 sq ft
 TOTAL HEATING SURFACE 1765 sq ft
 FIRE BAR SURFACE
 DIA OF SAFETY VALVES
 CUBIC FEET OF STEAM SPACE 332 cu ft
 WORKING PRESSURE 180 lbs. LLOYDS

28/10/07

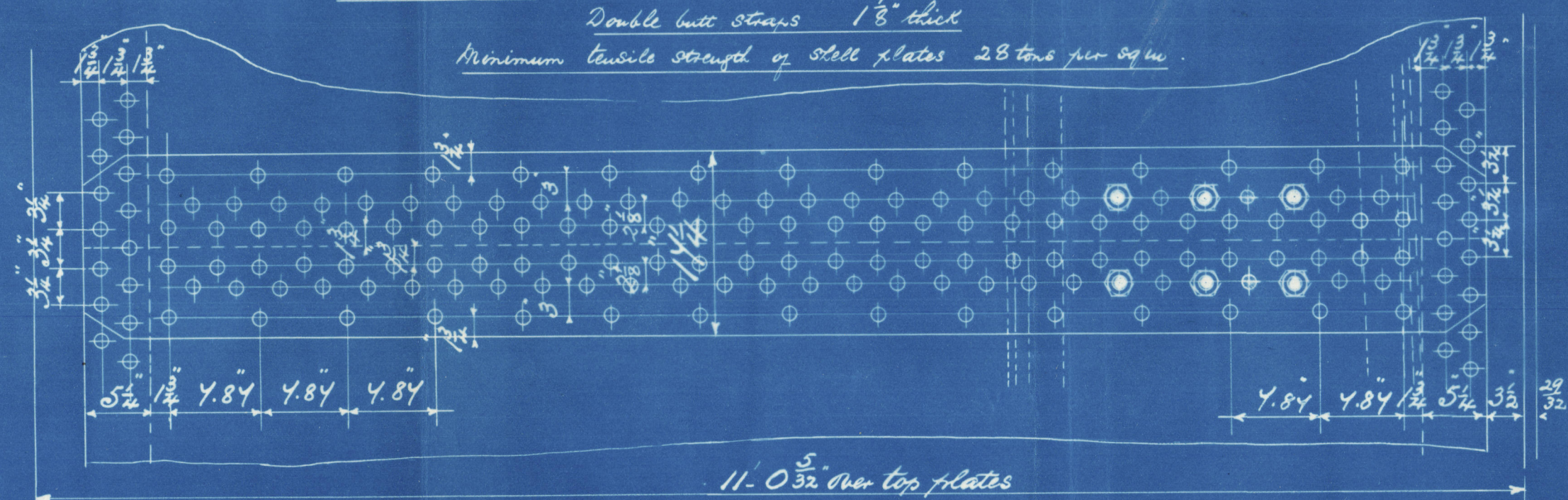
1/8" Doubling plate
 1 1/2" rivets 1 1/2" holes
 Fitted outside shell with slot axis longitudinally



Circumferential Beams
 1 1/2" rivets 1 1/2" holes 3 1/2" pitch
 70 plate 65.3
 70 rivet 44.9

Longitudinal Beams
 1 1/2" rivets 1 1/2" holes 4.27 pitch
 70 plate 85.3
 70 rivet 88

Double end beams 1 1/2" thick
 Minimum tensile strength of shell plates 28 tons per sq in.

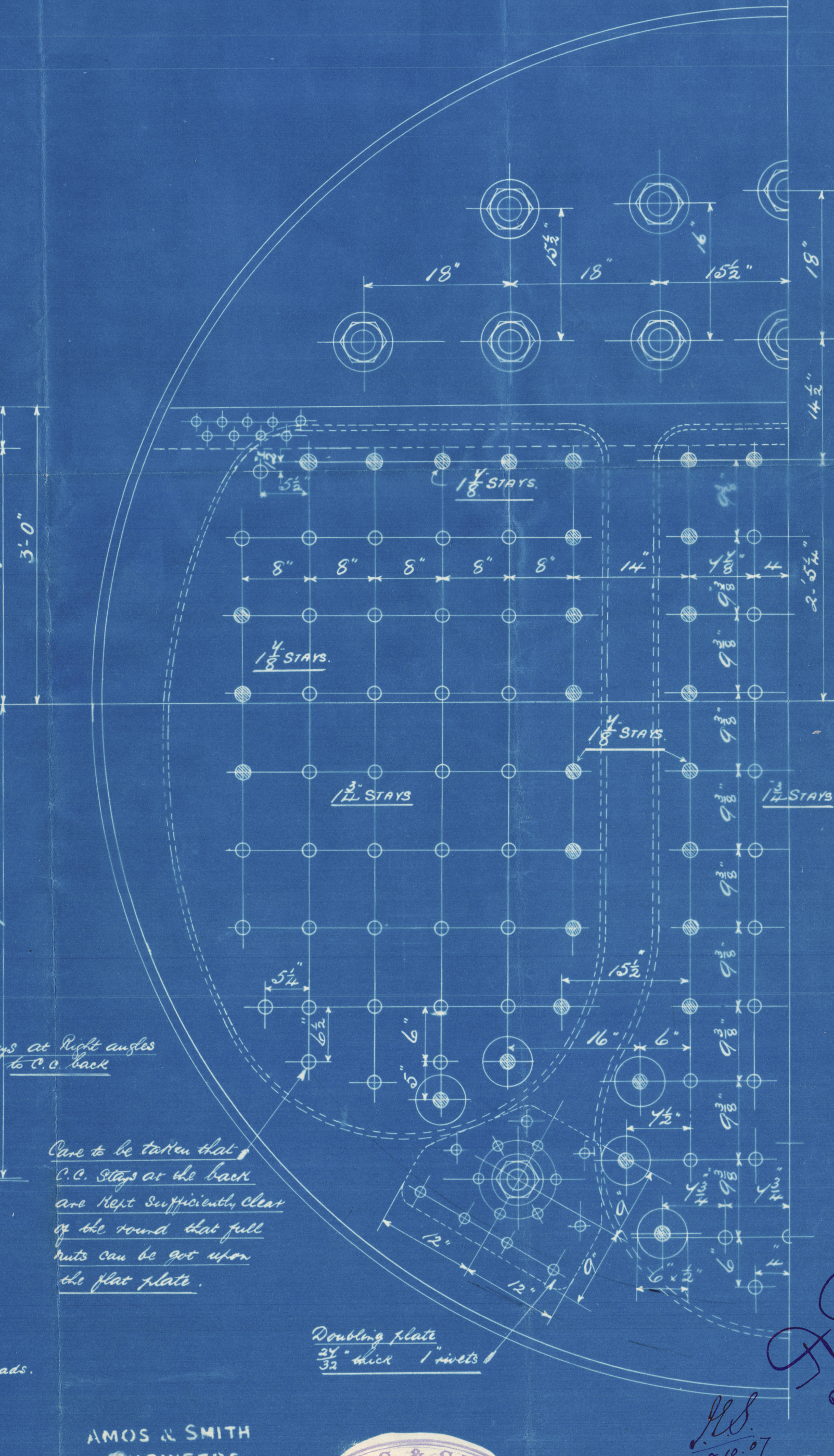
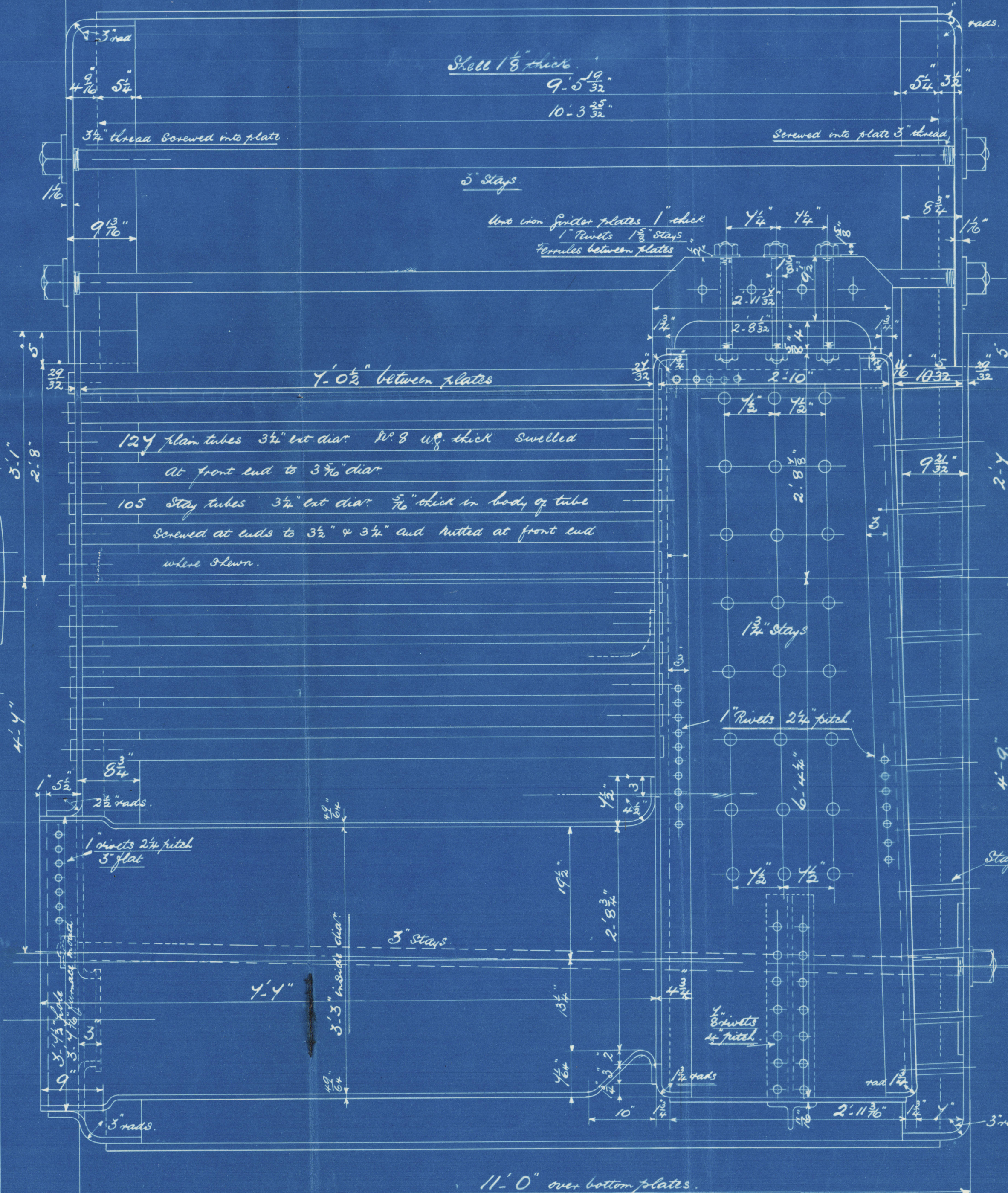
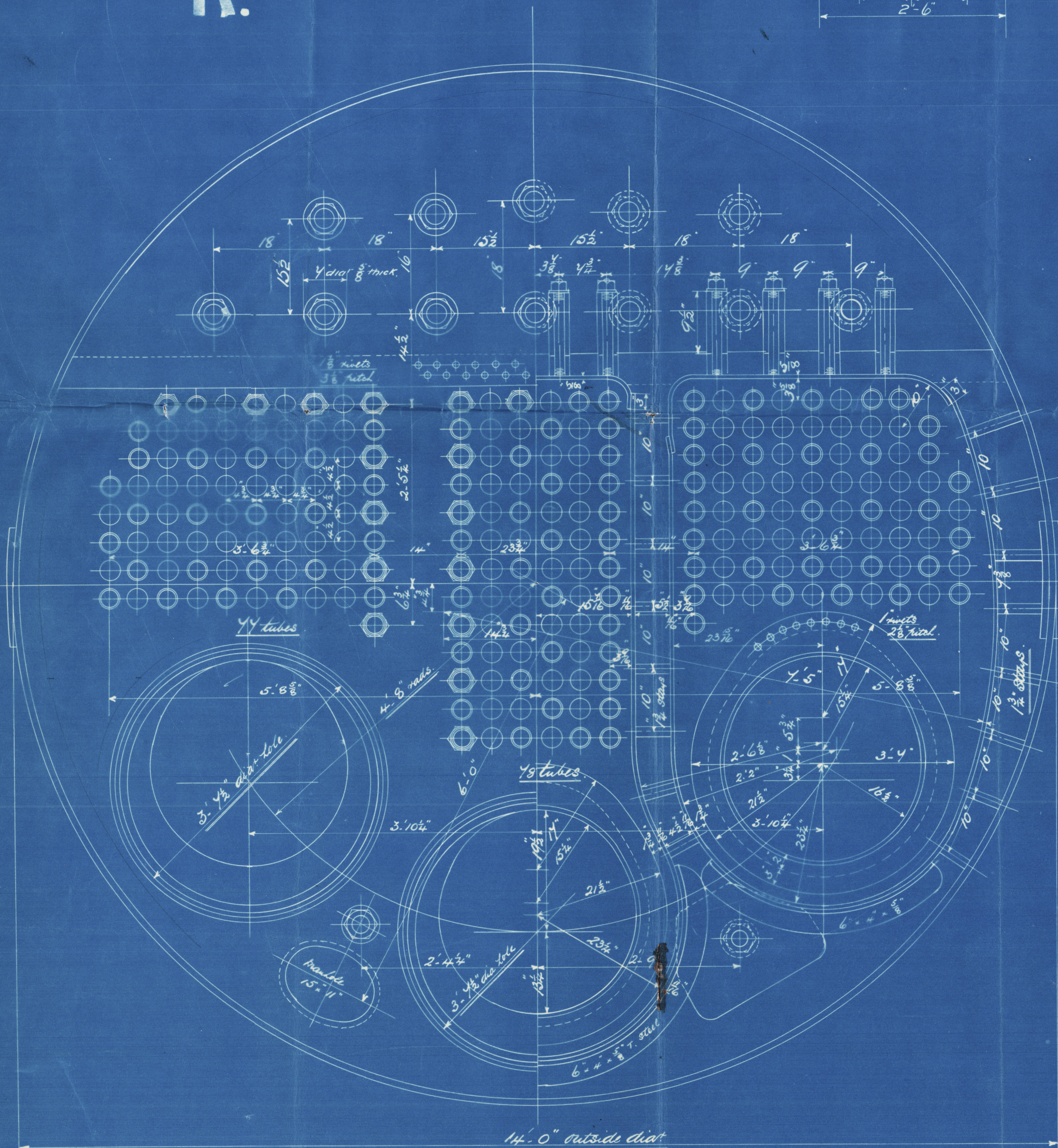


Note: The plates rivets & stays are made by the
 Siemens Martin process
 All rivets holes drilled throughout the boiler
 close in shell after the plates are bent
 All flange plates to be annealed after
 the plates are bent
 Stays are not to be welded
 Tubes are of iron
 The tensile strength of the shell plates to
 be between 28 & 32 tons per sq inch
 The combustion chamber stays are bent
 into hook plates and fitted with a nut
 at each end washers on outside of shell only
 none inside C.C.

Particulars of Staying

Stays	Size	No. of stays per inch	Sq. area of bottom of channel
Steam space stays	3"	6	6.10 sq in
Bottom stays	3"	6	6.10 sq in
Stay tubes	3 1/2"	9	2.14 sq in
C.C. stays	1 1/2"	10	1.46 sq in
"	1 1/2"	10	2.06 sq in
"	1 1/2"	10	2.39 sq in

R.



Care to be taken that
 C.C. stays at the base
 are kept sufficiently clear
 of the round that full
 nuts can be got upon
 the plate plates.

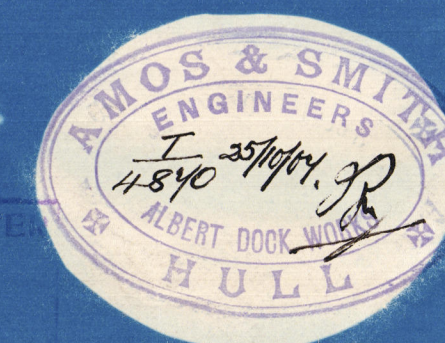
Doubling plate
 3/8" thick 1 rivet

10186.

STEEL BOILER N^{OS} 1378-1379.

AMOS & SMITH
 ENGINEERS
 ALBERT DOCK WORKS
 HULL

LLOYD'S REGISTER
 OF SHIPPING
 26



TITLE Steel Boiler
 FOR WHICH J. Huron
 DATE 25/10/07
 UNDER
 F MADE
 SCALE 1" = 1 foot Register
 No 660-00482

J.P.P.
 28/10/07

From AMOS & SMITH, HULL.

Enclosure for

Lloyds Surveyors

Hull

T
4570

W660 - 0048

$\frac{2}{2}$

2 Main Boilers
Amos & Smiths

— No 1378/9 —

180 lb



s/s Labrador Hull Rpt No 19911
- Notre Dame de Lourdes - - - 1995-8.

RECEIVED



© 2021

Lloyd's Register
Foundation

W660 - 0048 1/2