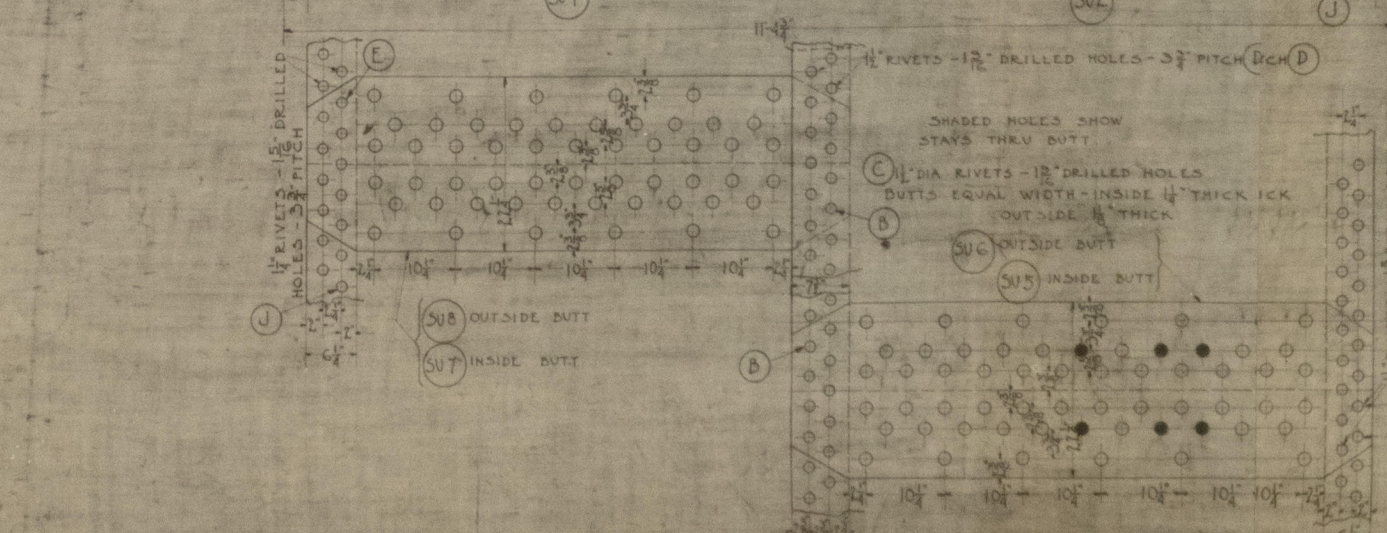
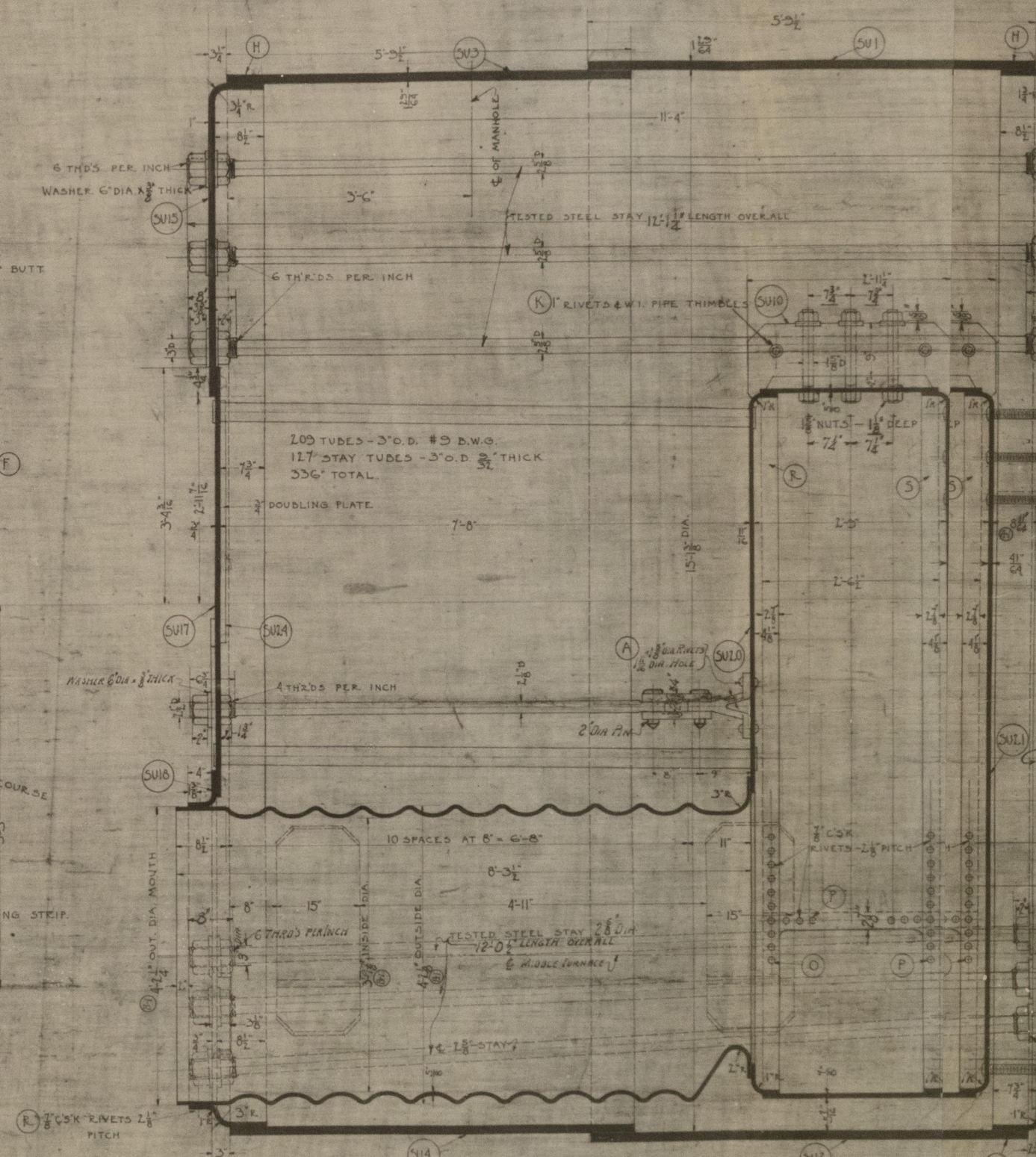


BOILER DATA	BOILER DIMENSIONS
WORKING PRESSURE	150#
HYDROSTATIC TEST (U.S.)	185#
HEATING SURFACE-TUBES	101,314
HEATING SURFACE-FURNACE	10,134
HEATING SURFACE-TOTAL	111,448
GRATE SURFACE	71.875
RATIO H ₂ O + G.S.	34.32
CALORIMETER THERM TUBES	12.45
RATIO G.S. + CAL.	5.773
EST. EVAPORATION 125° WATER PER G.S.	
SAFETY VALVE AREA REQ'D	0.0167

PORT BOILER - AS DRAWN
5" G.S. - TO OTHER HAND



GENERAL NOTES
 BOILER TO BE CONSTRUCTED TO U.S. STEAMBOAT INSPECTION AND AMERICAN BUREAU OF SHIPPING. ALL RIVET HOLES TO BE DRILLED
 BOILER TO BE TESTED TO 265# HYDROSTATIC PRESSURE.
 SCREW STAYS MARKED THUS \odot ARE 1 1/2" DIA. 12 THRS PER INCH WITH 1 1/2" HEX NUT 1 1/2" DEEP ON OUTSIDE ONLY AND RIVETS AT CORN. CHAMBER END.
 ALL OTHER SCREW STAYS UNLESS OTHERWISE MARKED ARE 1 1/2" DIA. 12 THRS PER INCH RIVETED AT BOTH ENDS.
 ALL RIVETING IN CORN. CHAMBER TO BE FINISHED WITH CON. HEADS.
 ALL SCREWED STAYS TO BE OF STEEL AND TO HAVE 1/2" HOLE DRILLED IN EACH END TO A DEPTH OF 1/2" BEYOND INSIDE SURFACE OF PLATE.
 LETTERS IN CIRCLES REFER TO RIVETS ORDERED ON B.M. NUMBER. PLATES SCHEDULE.
 FOR MAIN BOILER DETAILS SEE 3463-35-11.

NAME	SIZE	WORKING PRESSURE TO U.S. RULES	WORKING PRESSURE TO AMER. BUREAU RULES
SHELL	1 1/2"	6000 PSI	6000 PSI
TOP HEADS	1 1/2"	6000 PSI	6000 PSI
S.C. WRAP	1 1/2"	6000 PSI	6000 PSI
C.T. SHEET	1 1/2"	6000 PSI	6000 PSI
C.C. BACK	1 1/2"	6000 PSI	6000 PSI
C.C. GIRDERS	1 1/2"	6000 PSI	6000 PSI
C.C. BOTTOM	1 1/2"	6000 PSI	6000 PSI
FURNACES	1 1/2"	6000 PSI	6000 PSI
MAIN STAYS	1 1/2"	6000 PSI	6000 PSI
SCREWED STAYS	1 1/2"	6000 PSI	6000 PSI
PLATE PERCENTAGE			
RIVETS PERCENTAGE			

SURVEYOR TO LLOYD'S REGISTER
 NEWPORT NEWS
 OF SHIPPING
 July 5, 1922

LOCATION	ALTERATION	DATE	NOTED	APPROVED
(1)	CHANGED FROM 12 TO 14	7-11-22		
(2)	DIR. OF FORWARD CASE & SHUTTER	7-11-22		
(3)	LOCATION OF BUTT ON BACK END VIEW REMOVED	7-11-22		
(4)	COMPONENTS 3463-3469 CHANGED TO 3463-3469	7-11-22		

3465	3466	3467	3468	3469
2149	3464	2148	3463	

FORE RIVER	MOORE	HARLAN	SPARKS POINT	UNION

HULL NUMBERS
BETHLEHEM SHIPBUILDING CORP. LTD.
BETHLEHEM, PA.
MAIN BOILER
15" MEAN DIA. 11' 4" LONG. 170,000 LBS. PRESSURE
SCALE - 1" = 1'-0"
DRAWN BY
TRACED BY
CHECKED BY

E-3463

W660-0026 2/2