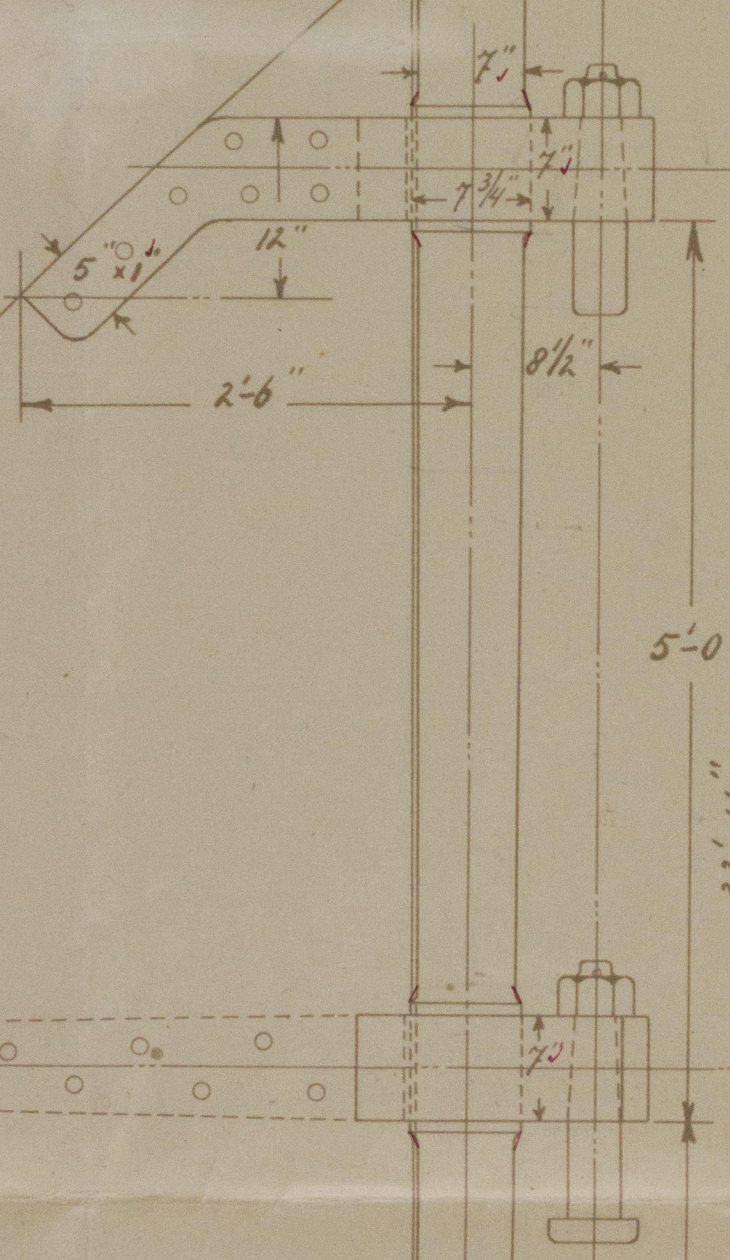
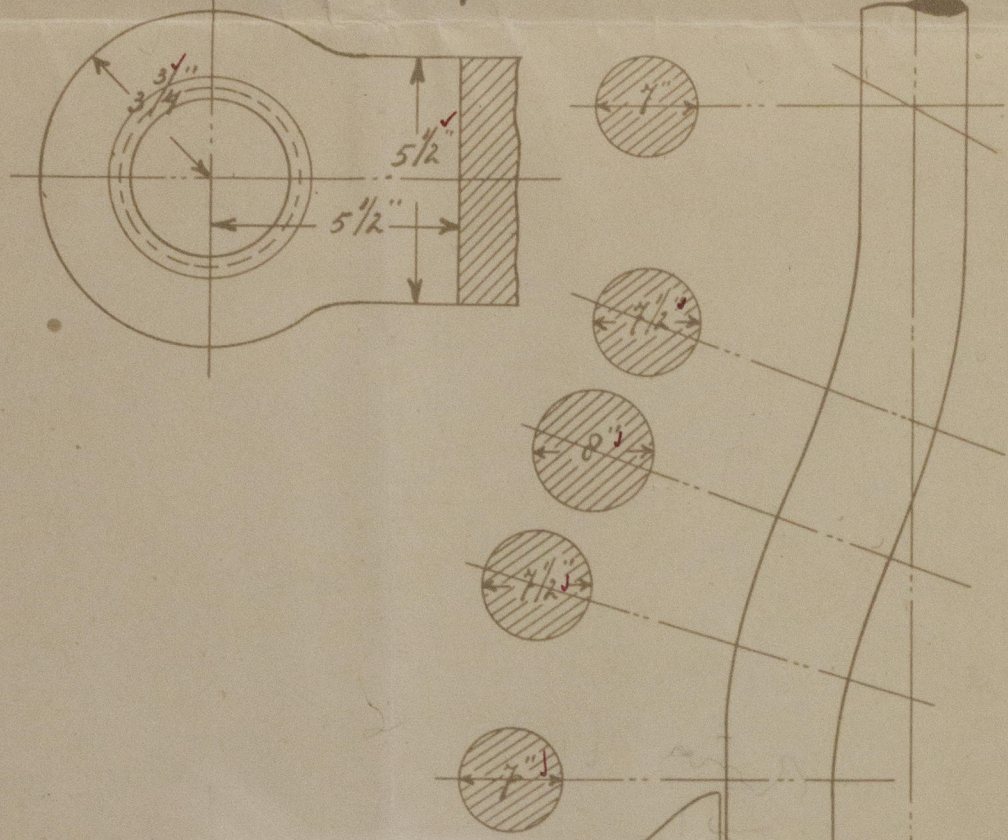
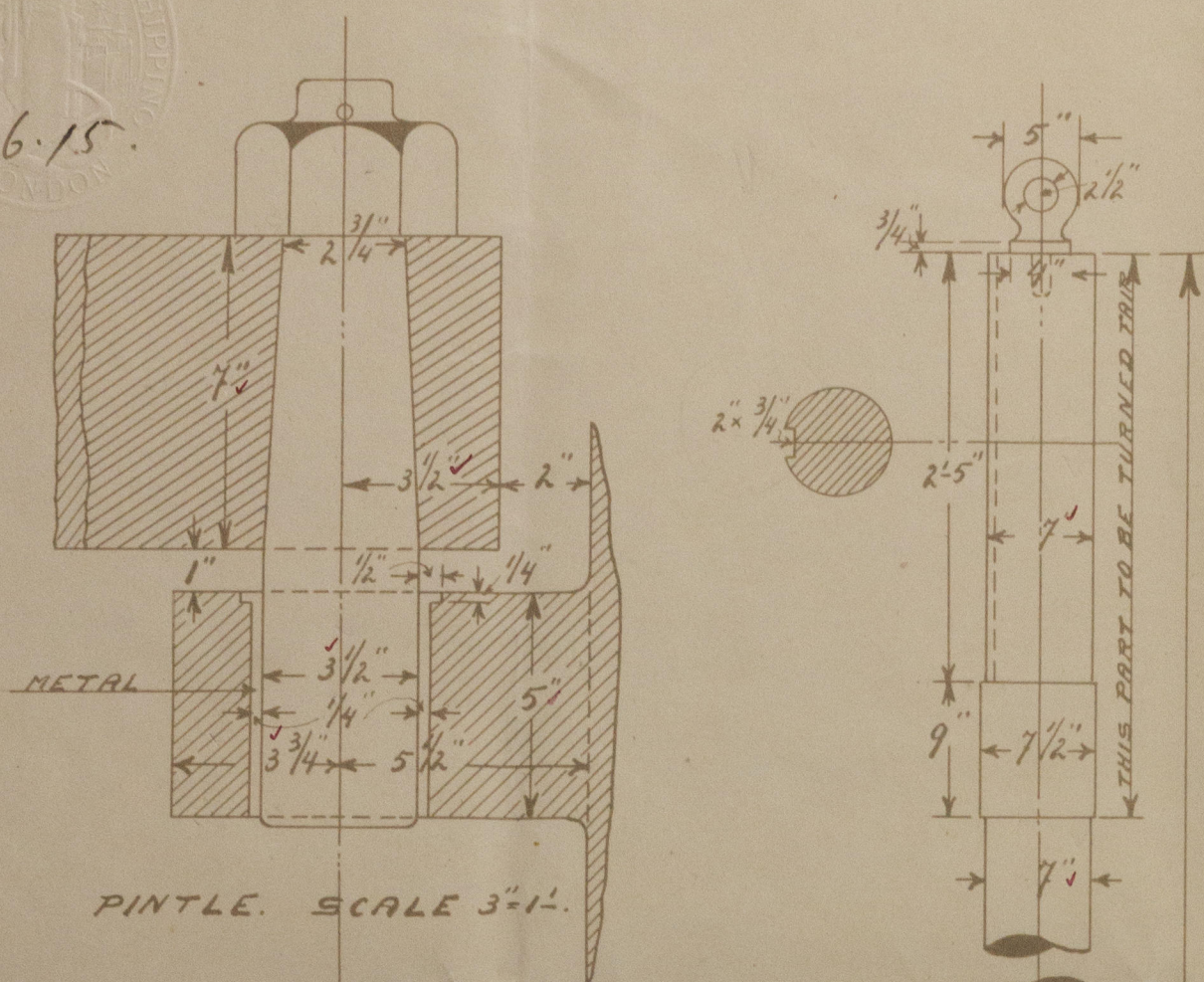
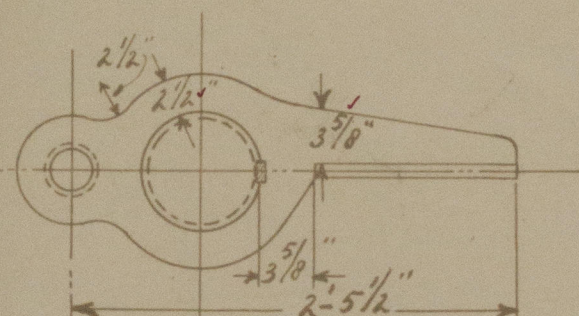
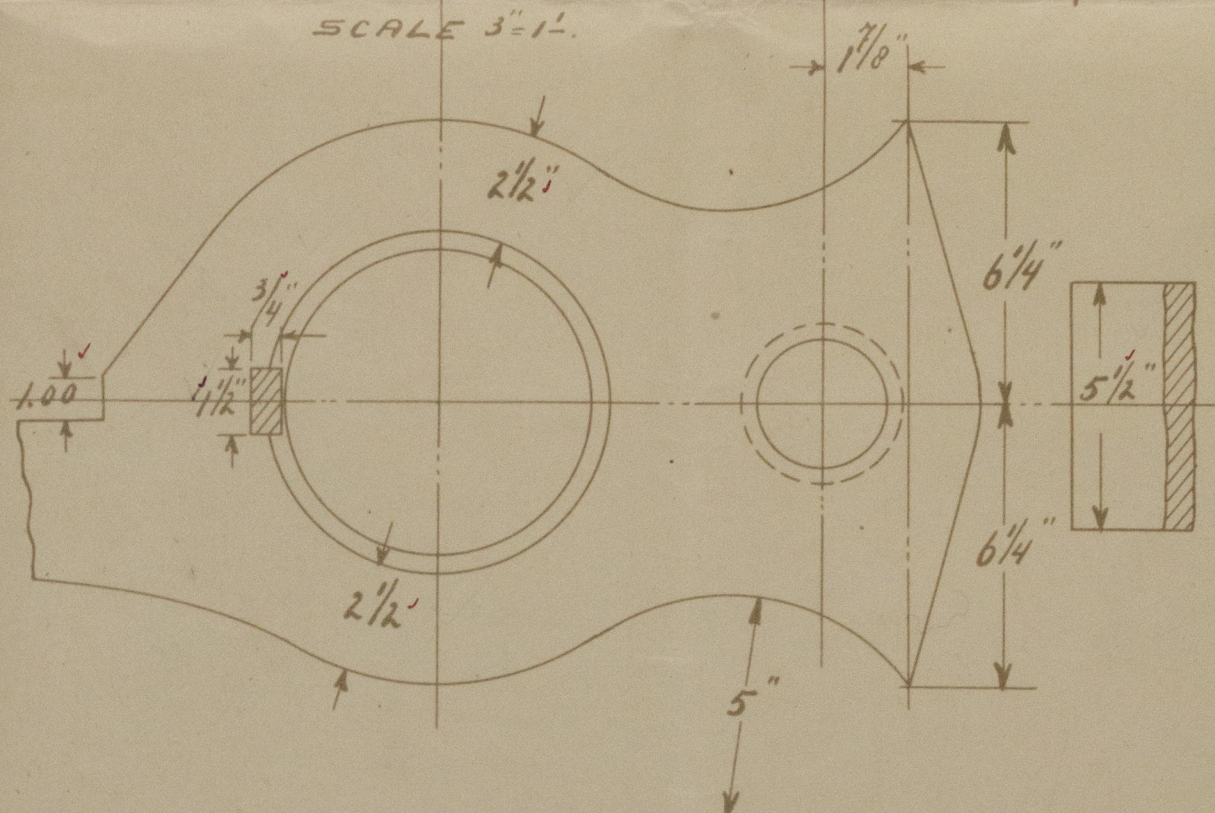
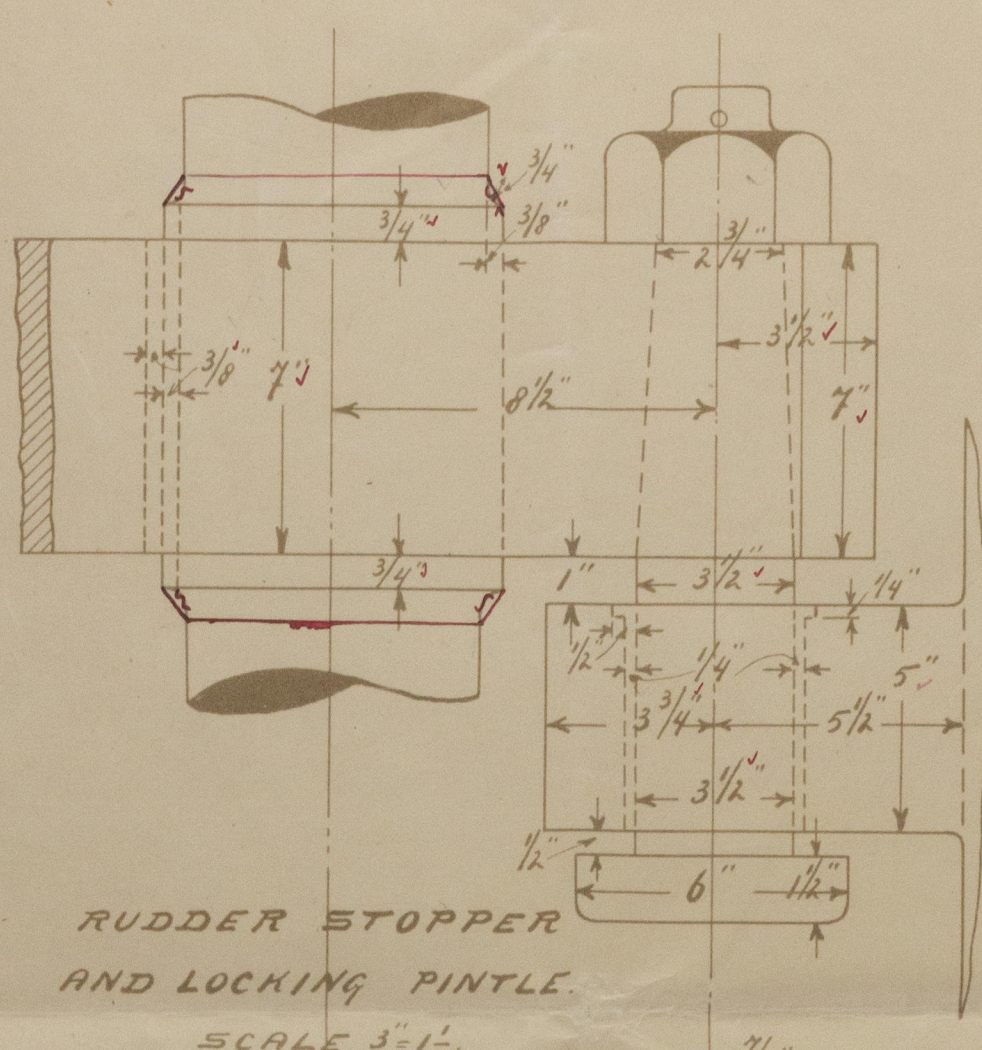
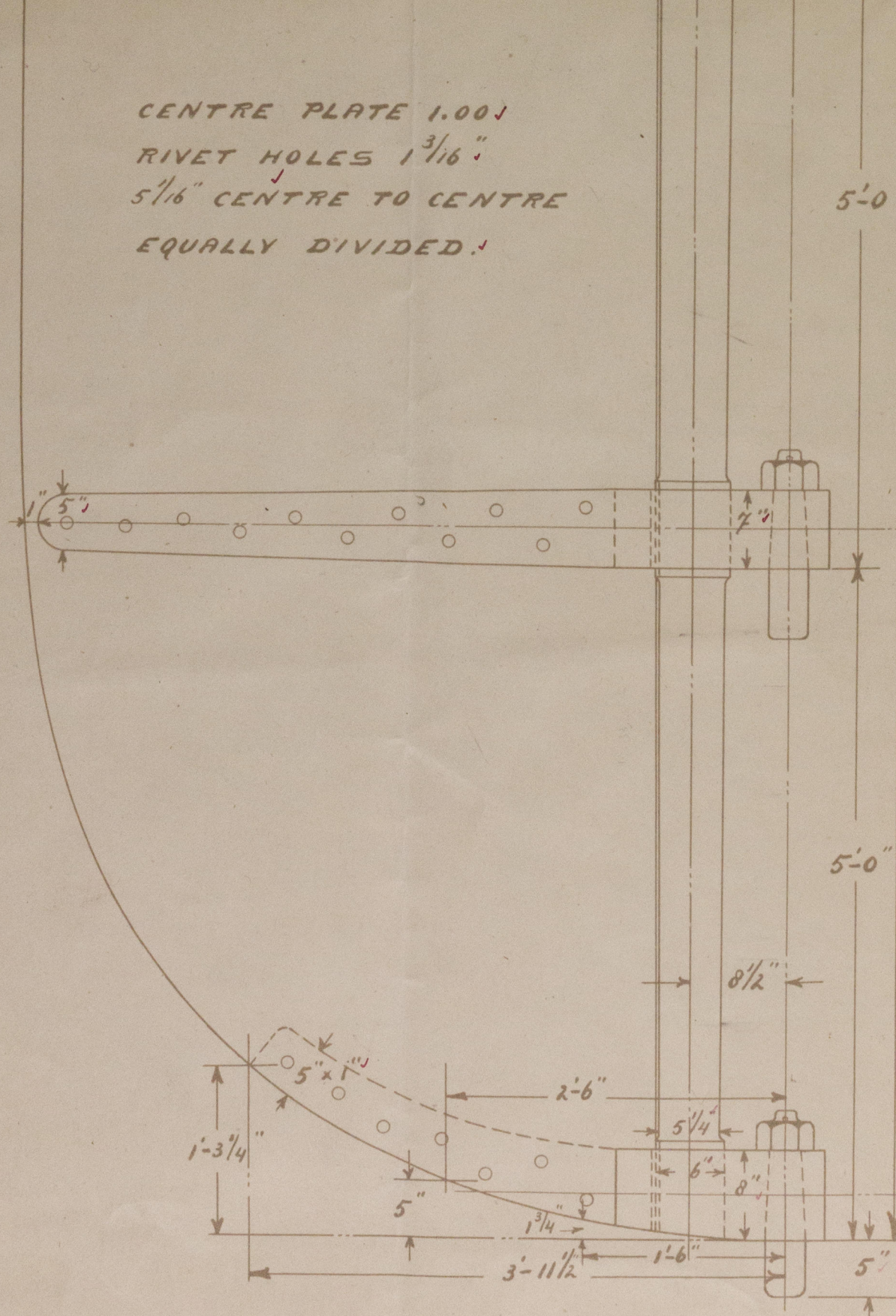


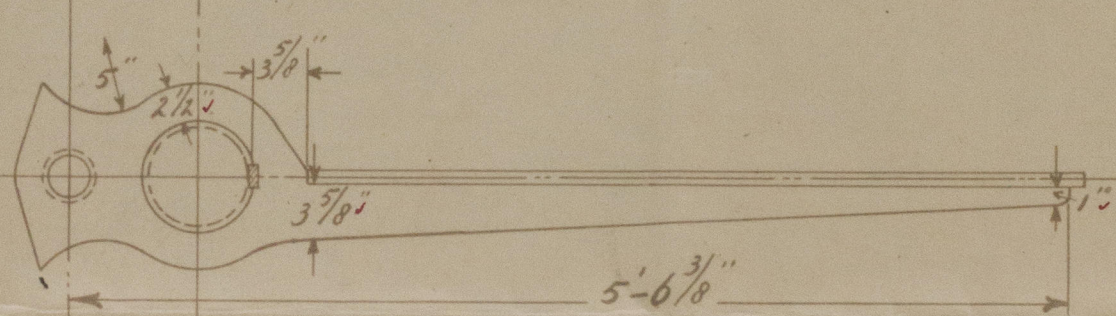
4. 6. 15.



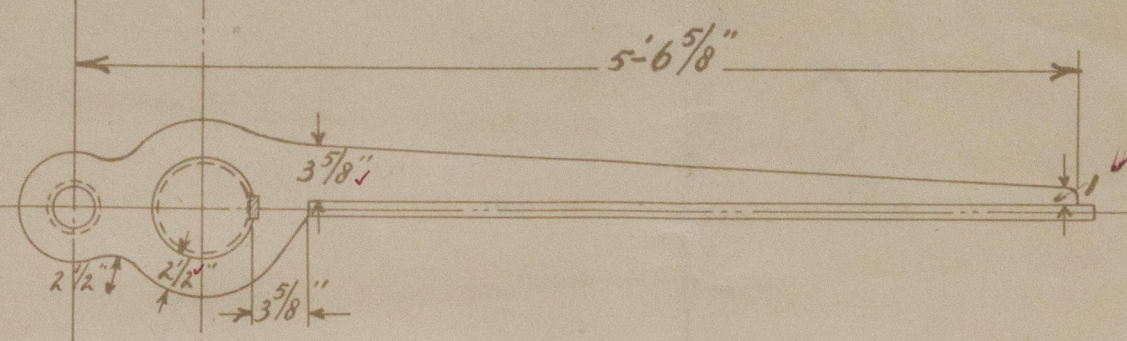
CENTRE PLATE 1.001
RIVET HOLES $1\frac{3}{16}$ "
 $5\frac{1}{16}$ " CENTRE TO CENTRE
EQUALLY DIVIDED.



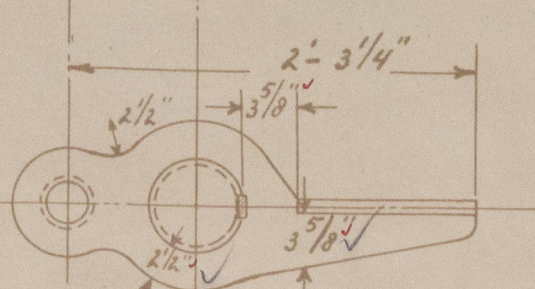
CENTRE PLATE RUDDER.
FORGED IRON OR FORGED STEEL.
S. S. N^o 478.
SCALE 1"=1'.



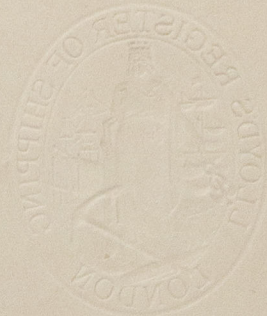
SCHEEPSWERF VOORheen JAN SMIT Cz.
ALBLASSERDAM
HOLLAND



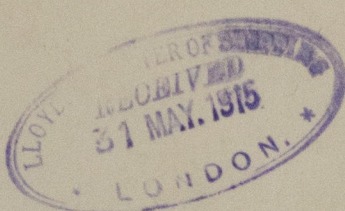
$A =$ ~~76.020~~
 $D =$ ~~2.5033~~
 $A \times D = 196.40$
SPEED UNDER 10 KNOTS



Jan.
4.6.15



478
Frederick



S. S. Sint Jansland
Rotterdam report no. 10170^a
Plan of Reelder.

WG6- 0028

