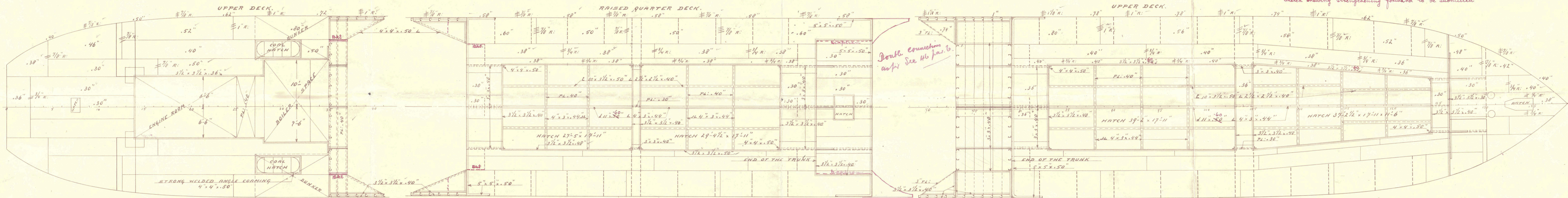
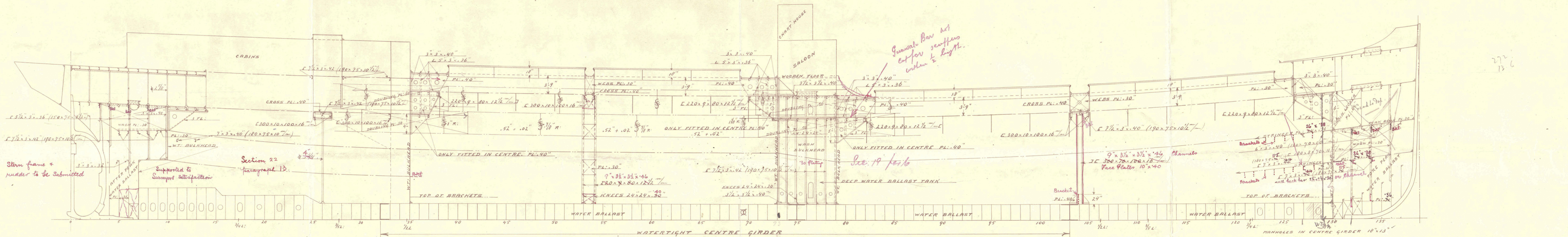
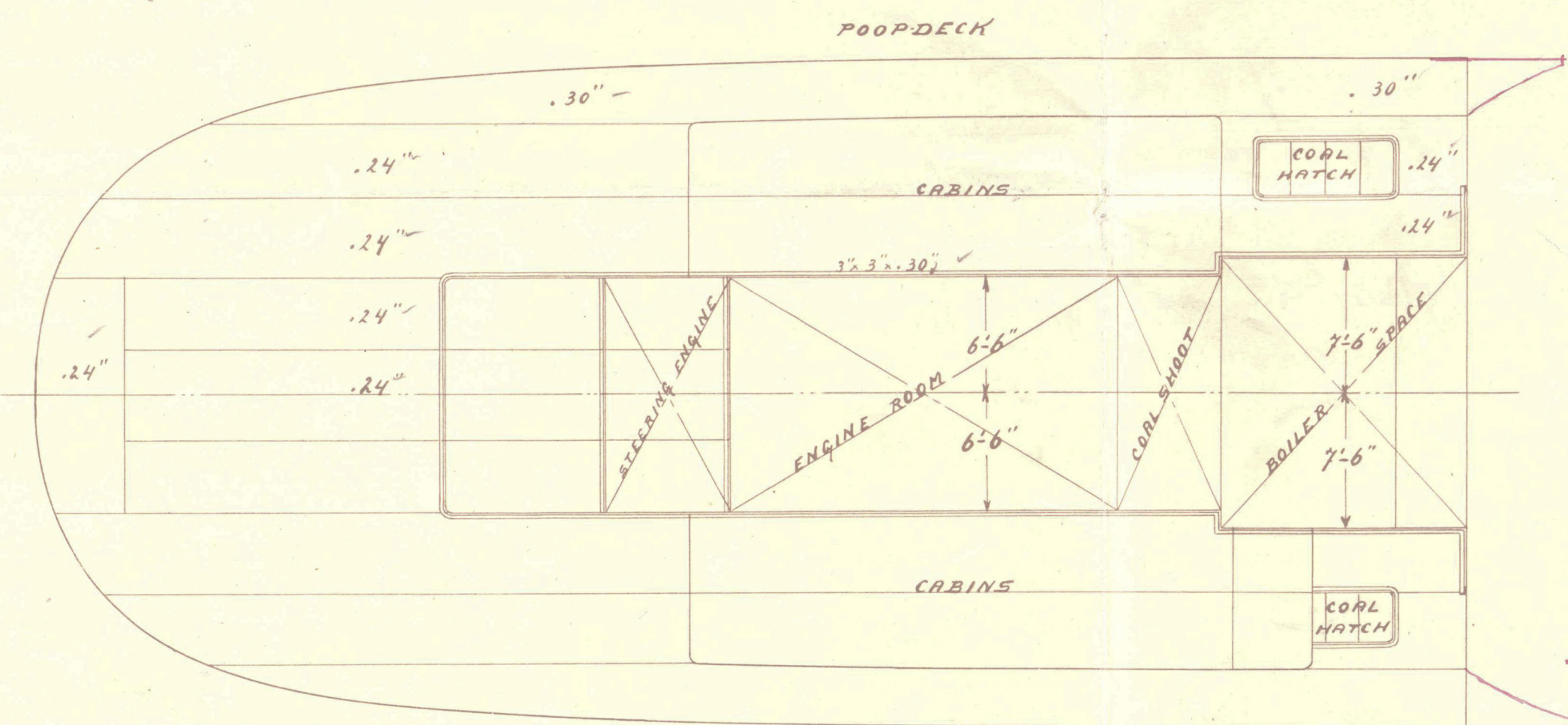


4.3.15.  
4.6.15



GENERAL ARRANGEMENT. S.S. N<sup>o</sup> 478  
27'0" x 39'10" x 20'7"  
SCALE 1/8" = 1'

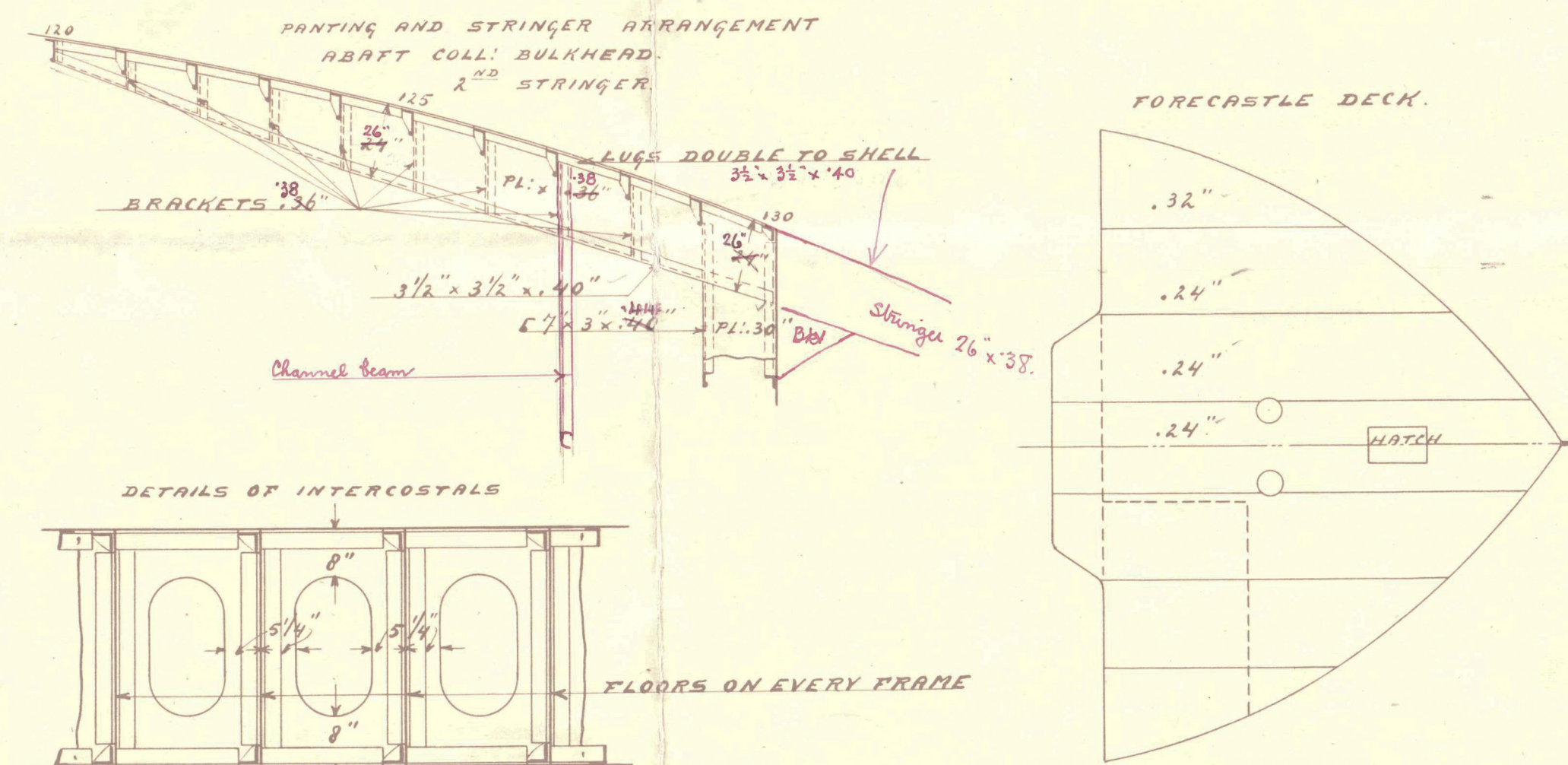
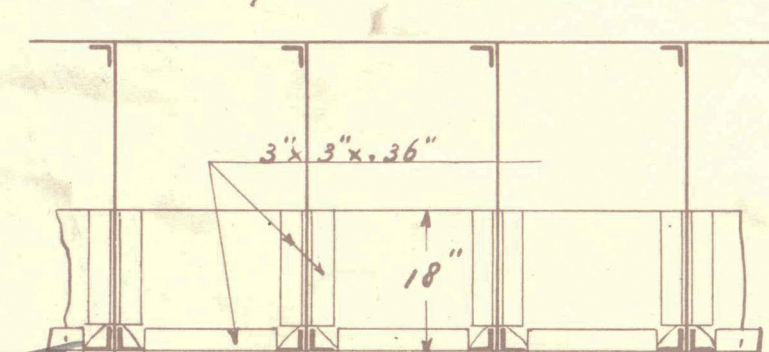
SCHEEPSWERF VOORHEEN JAN SMIT & CO.  
ALBLASSERDAM  
HOLLAND



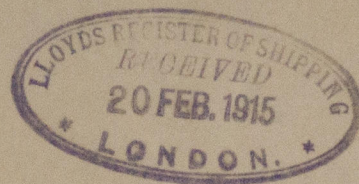
BOTTOM PLATING FORWARD STRENGTHENED AS PER SEC. 17 PARA 5  
FORWARD OF 1/2 L TO COLL. BULKHEAD IN PLAT OF BOTTOM RIVETS  
IN FRAMES AND SHELL SPACED 5 1/2" x DIAMETER APART.  
FORWARD OF 1/2 L: INSIDE DOUBLE BOTTOM IS FRAMES DOUBLED.  
IN AFTER PEAK, FORE PEAK AND DEEPTANK RIVETS THROUGH  
FRAMES AND SHELL 5 1/2" x DIAMETER APART.  
PLATES CONNECTED TO STERNFRAME x.50"  
BOSS PLATING x.50"

4.3.15

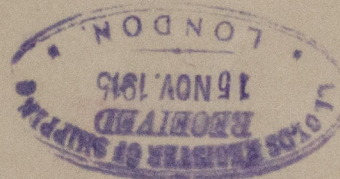
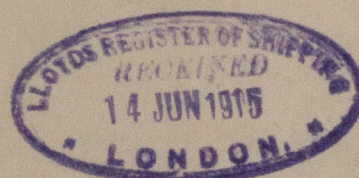
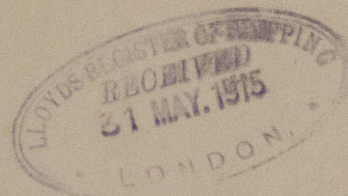
INTERCOSTAL BETWEEN CENTRE GIRDER  
AND SIDE GIRDER FORWARD OF 1/2 L:







profile 478.



S.S. Lint Laurand

Rotterdam report. no. 10170 <sup>a</sup>

Profile L. Can.



© 2021

Lloyd's Register  
Foundation

W66-0025