

W/65-0054(112)

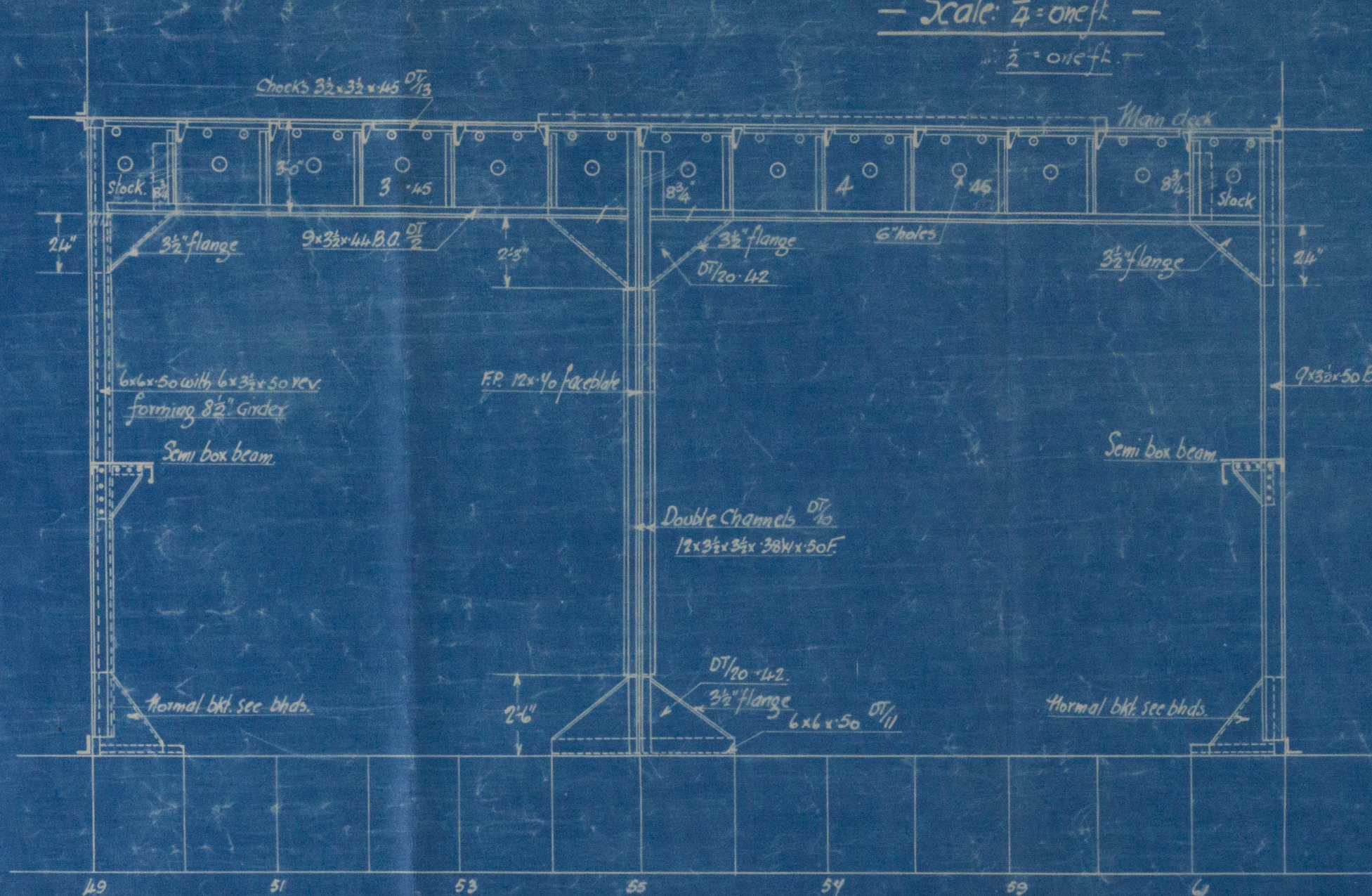
Plan of MODIFICATIONS TO PILLARS & GIRDERS N° 437.  
For Enclosure to  
Messrs. BRITISH INDIA STEAM NAVIGATION COY

N° 437  
— N° 437 T.S.S. —

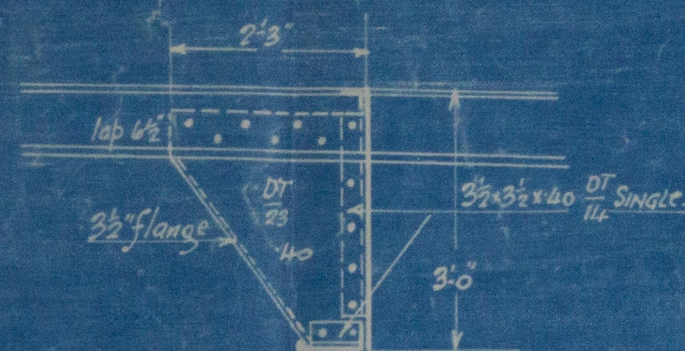
— Modifications to Pillars and Girders due to Vessel being insulated. —

— Scale:  $\frac{1}{4}$ " = 1' —

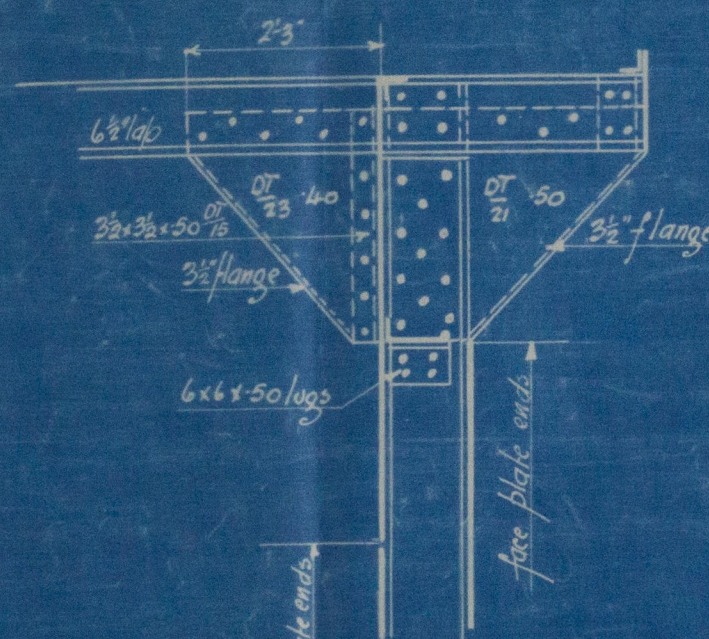
$\frac{1}{2}$ " = 1' —



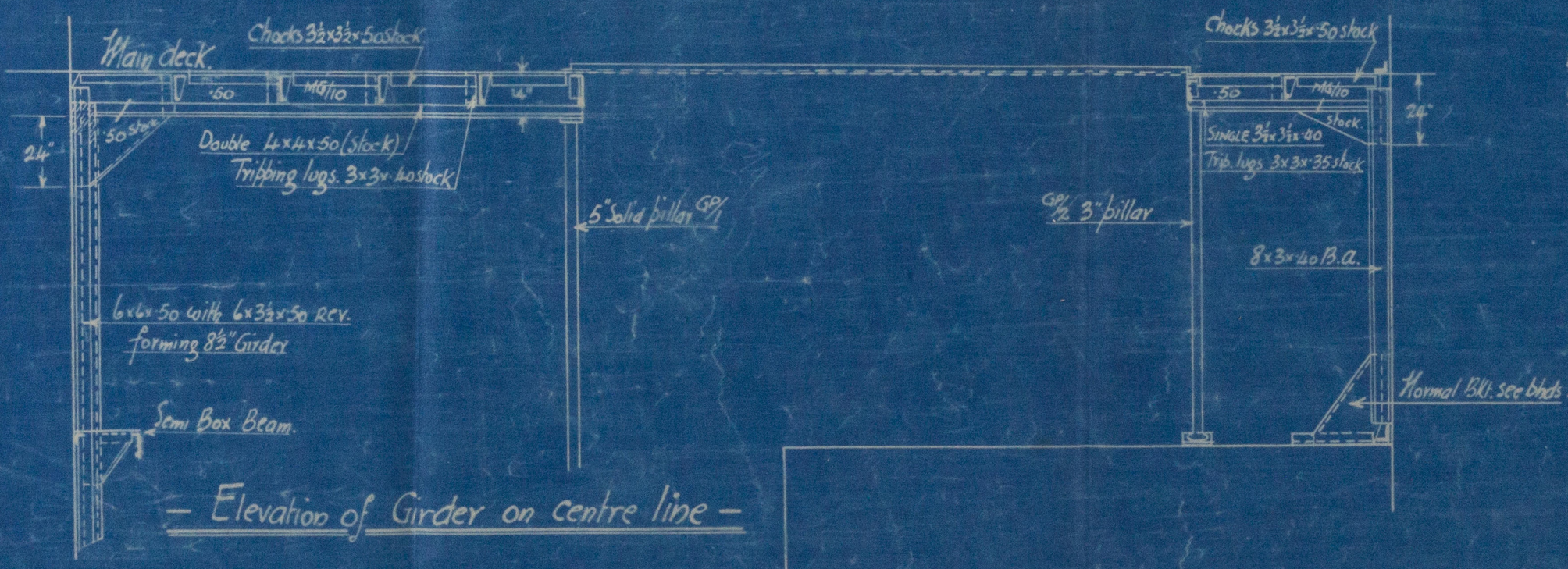
— Elevation of Girder 12'0" off of P+S. —



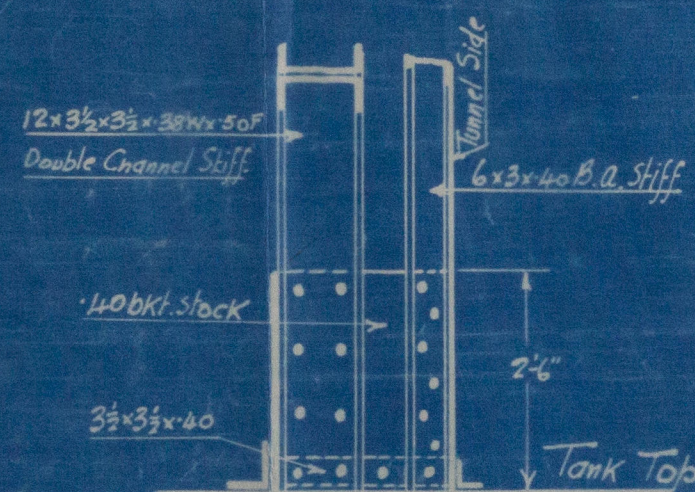
Detail of Tripping Bkts. fitted to every beam except No. 55



Detail of Tripping Bkts. on frame 55

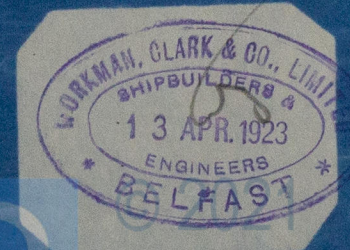


— Elevation of Girder on centre line —



Detail of Bracket to Tunnel Side at Foot of Channel Pillar.

This Plan is to be used in conjunction with "Pillars and Girders Plan" & Plan shewing "Modifications to Pillars & Girders due to Vessels being insulated" for ships 437-440.



24/May/18  
W/65-0054(12)

How here

Modifications to  
Pillars & girders

W65- 0054



© 2021

Lloyd's Register  
Foundation