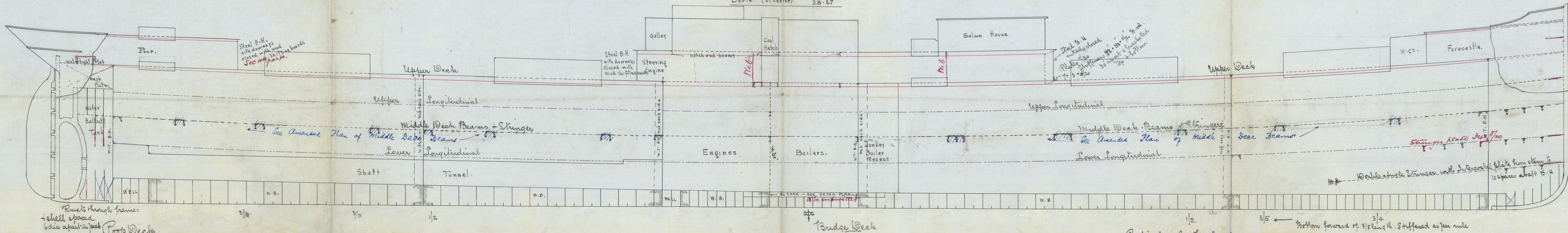


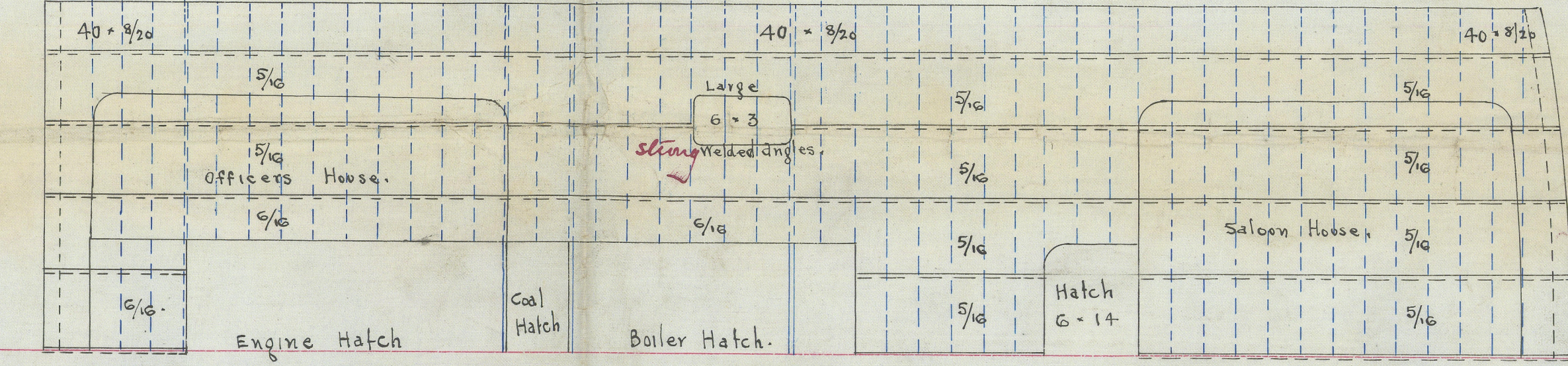
# PROFILE & DECK PLANS STEEL $\frac{3}{8}$ N° 380

DIMENSIONS, as per Rule.  
 LENGTH 539.08  
 BREADTH (MOULDED) 46.30  
 DEPTH (AT CENTRE) 28.27

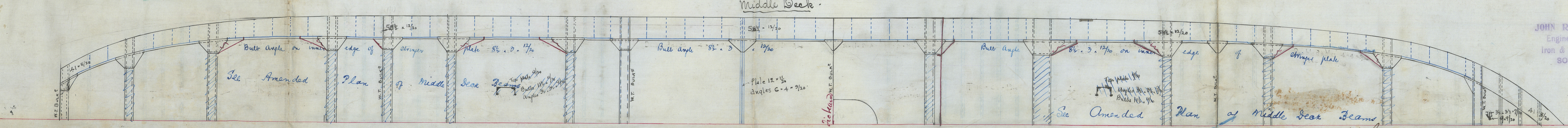
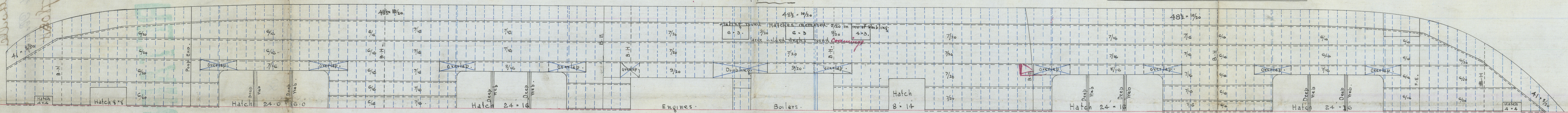
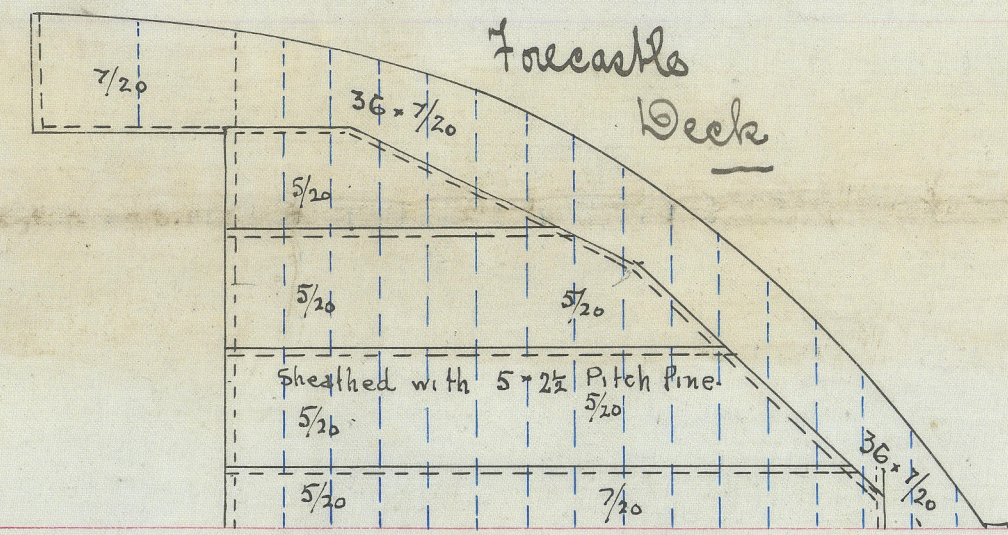
15.1.04  
 5.3.04



JOHN READHEAD & SONS,  
 Engineers, Boiler Makers,  
 Iron & Steel Ship Builders,  
 SOUTH SHIELDS.



Particulars for Foreboard  
 Length between perpendiculars 341.0  
 Breadth at extremities 46.6  
 Depth moulded to Upper Deck at middle of length 27.4  
 of Hold 0.8 to Upper Deck 24.8  
 Joistage under deck 35.5 tons  
 Coefficient of stress 91.0 at side 94.0 at centre  
 Length of 13 ridge 41.0 41.0  
 Forecastle 41.0 32.0  
 Scantlings Class 100-A. Special Survey 3 deck rule  
 Sheer at after side of stem post 4.6 fore side of Stem 8.6  
 at 1/8 length aft 2.6 at 1/8 length fwd 4.6  
 Upper deck of Iron & Steel - not covered with wood



JOHN READHEAD & SONS,  
 Engineers, Boiler Makers,  
 Iron & Steel Ship Builders,  
 SOUTH SHIELDS.

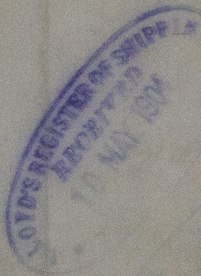
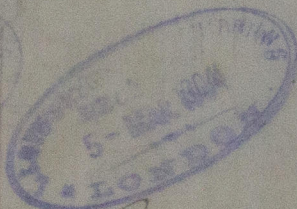
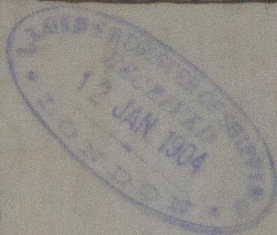


Newcastle-on-Tyne

Plan of Profile

Messrs Readheads Yard No 380

"SOUTHVILLE"



RETAIN

99 Southville

Newcastle Report

No 47808K

RETAIN

WB49-0168



© 2020

Lloyd's Register  
Foundation