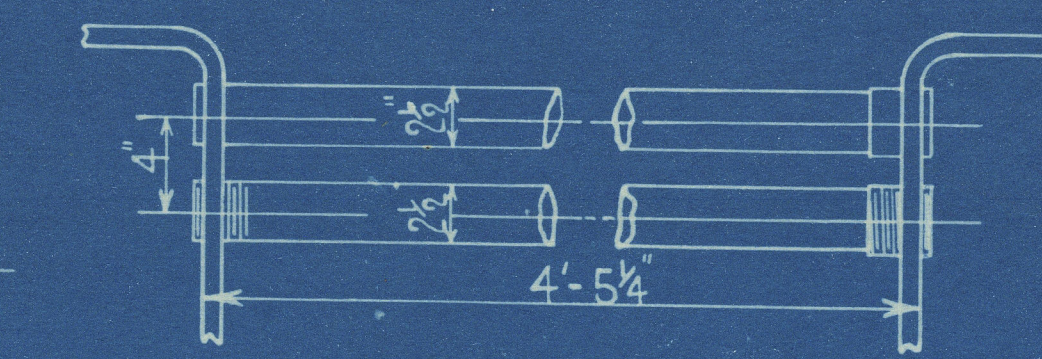


COCHRAN PATENT VERTICAL MULTITUBULAR BOILER.

HORIZONTAL FLUE TUBES.

PLAIN TUBE HOLES $2\frac{1}{2}$ " DIA.
IN BACK TUBE PLATE.

PLAIN TUBE HOLES $2\frac{1}{2}$ " DIA.
IN FRONT TUBE PLATE.



STAY TUBE HOLES SCREWED
 $2\frac{1}{2}$ " DIA. 11-THREADS PER INCH
IN BACK TUBE PLATE.

STAY TUBE HOLES SCREWED
 $2\frac{1}{2}$ " DIA. 11-THREADS PER INCH.
IN FRONT TUBE PLATE.

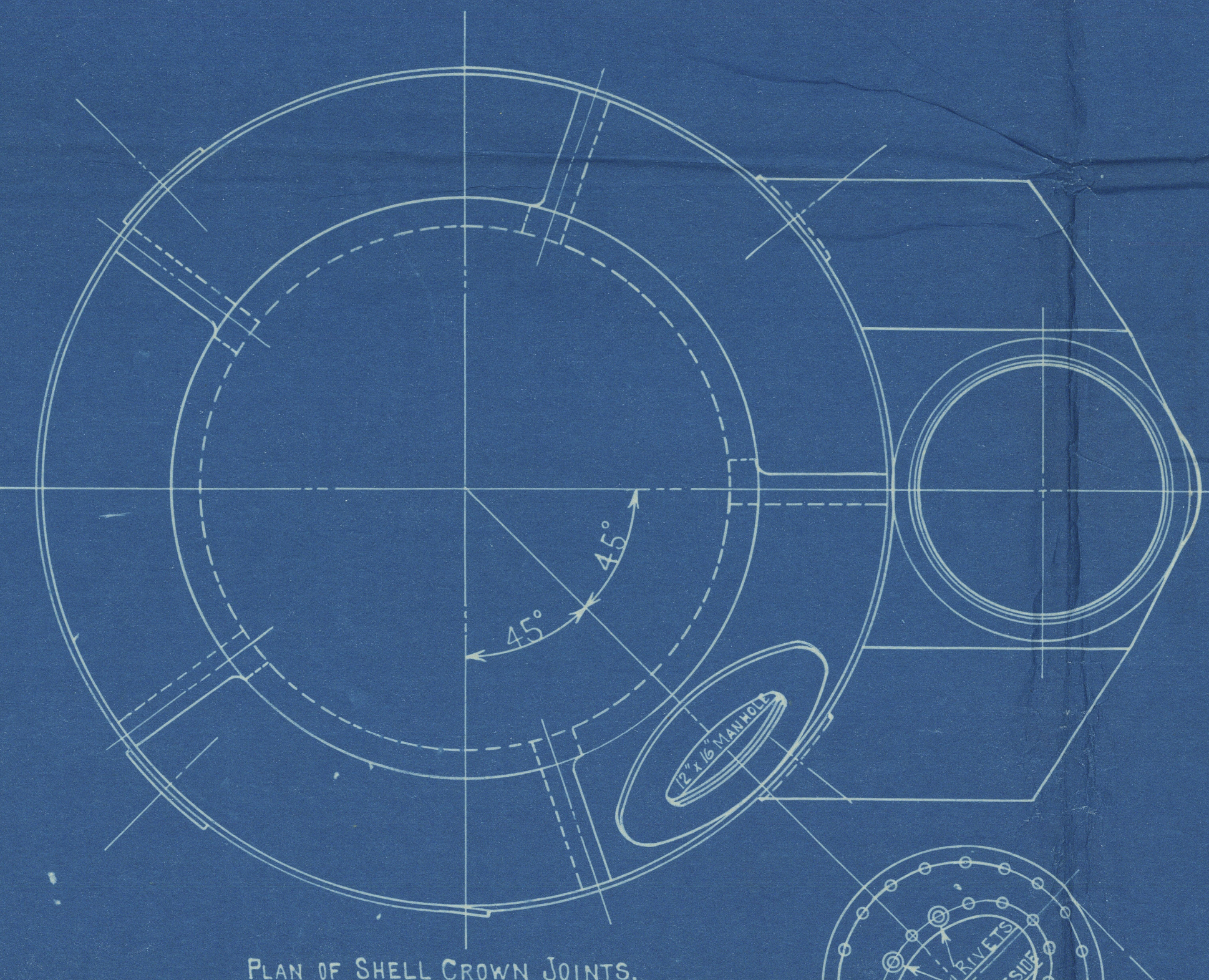
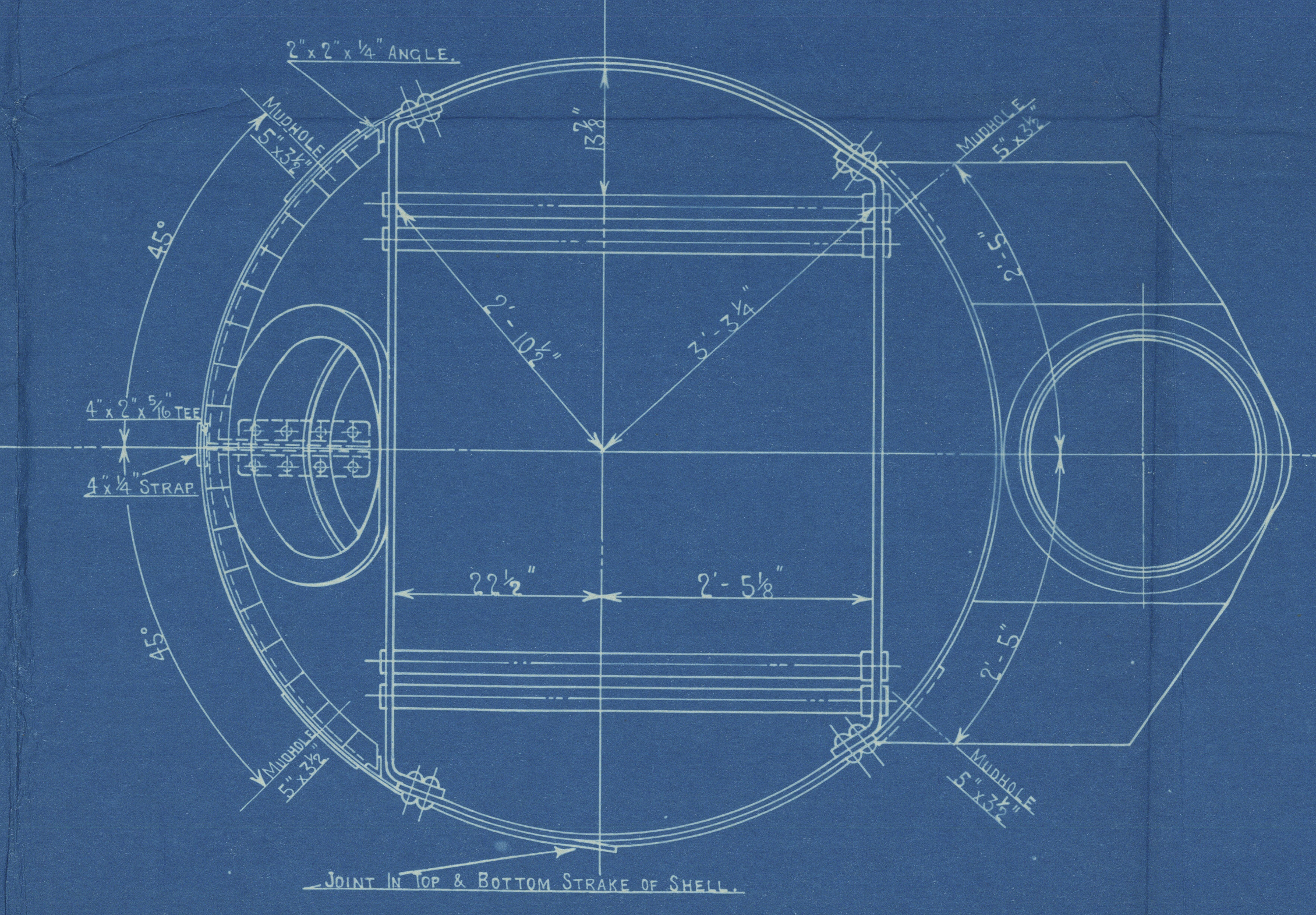
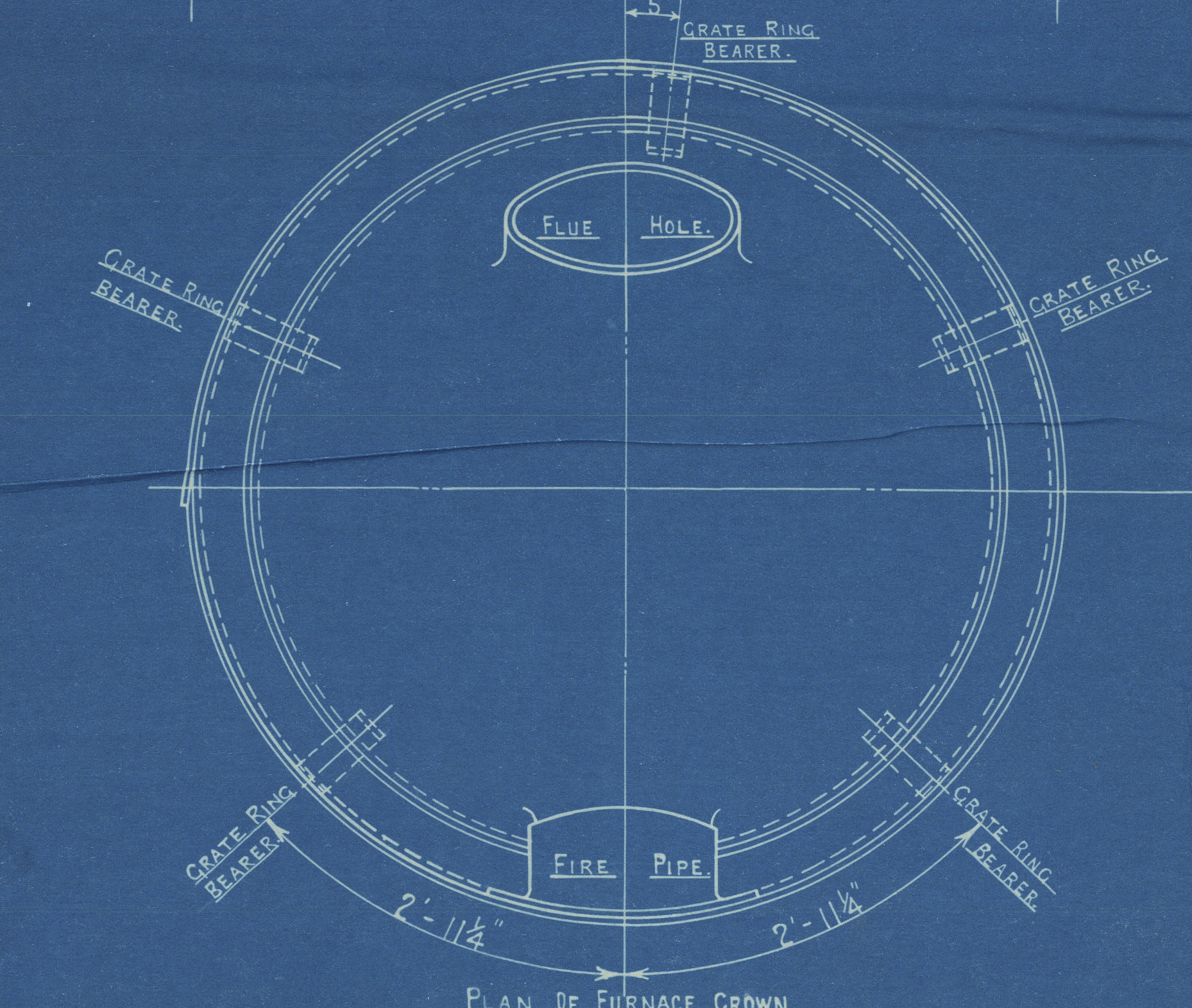
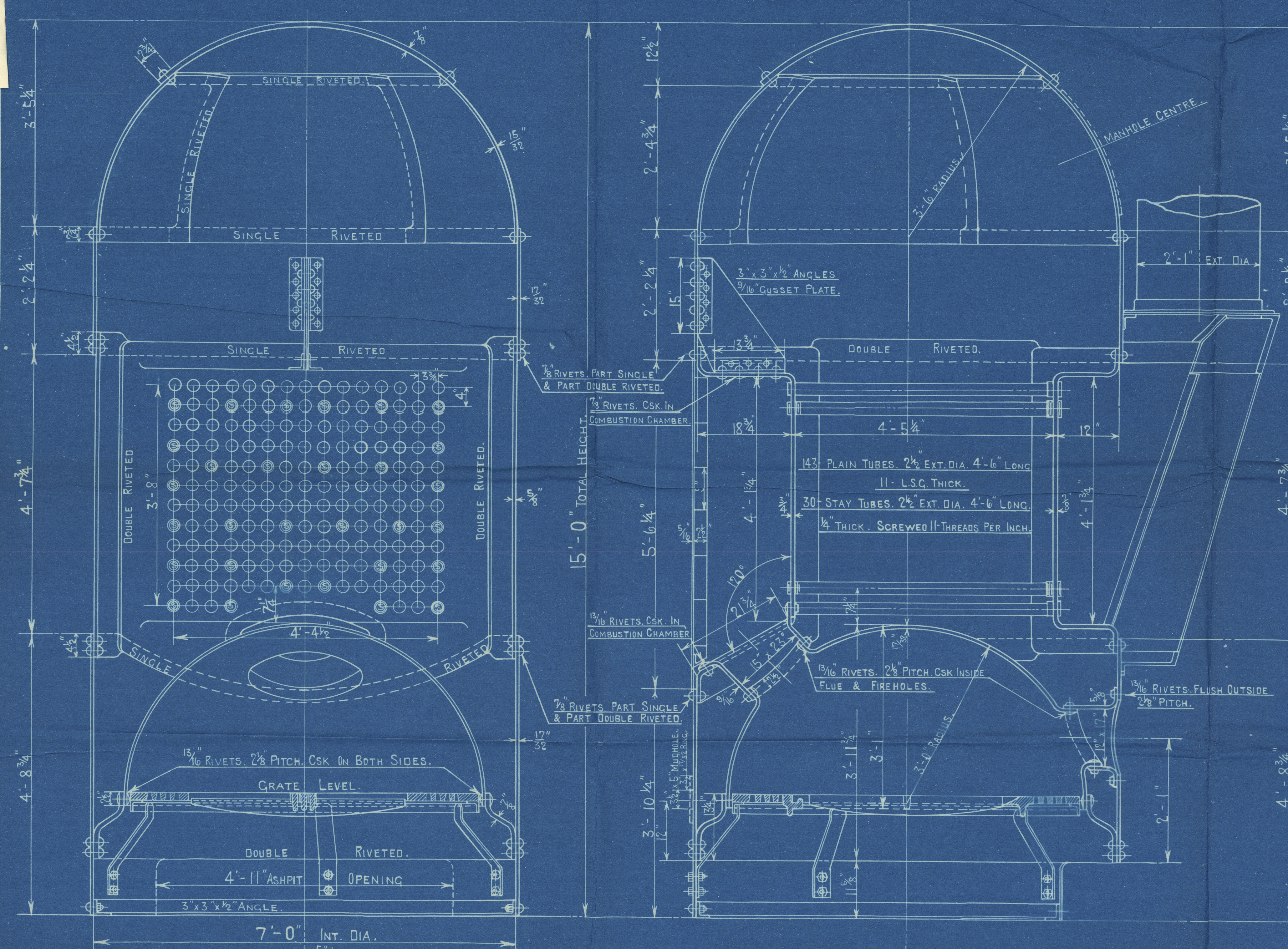
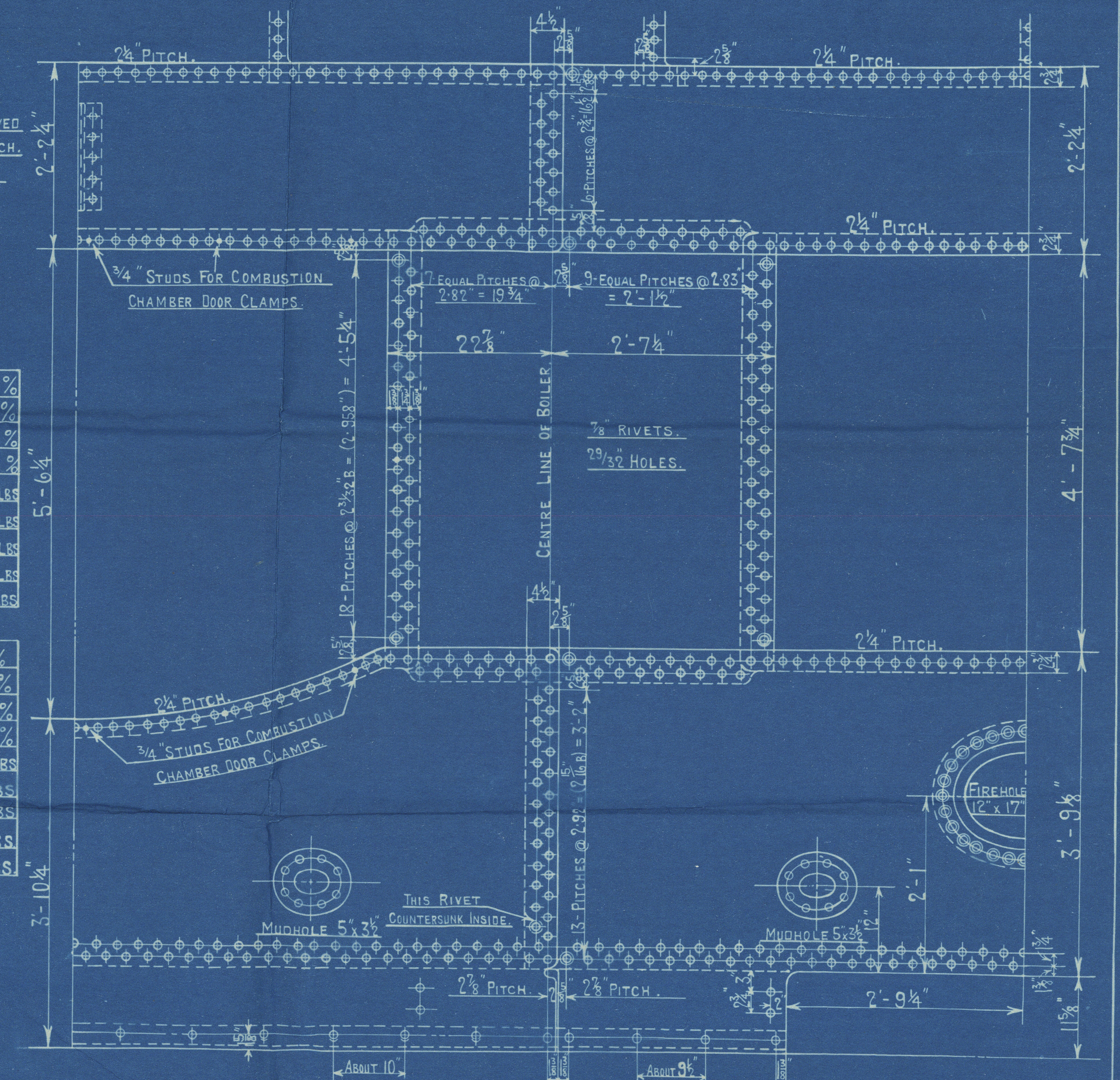
SCALE $1\frac{1}{2}$ " = 1 FOOT.

HEATING SURFACE.	
TUBES	487 SQ. FT.
PLATE	113 SQ. FT.
TOTAL	600 SQ. FT.
GRATE AREA	26.75 SQ. FT.

LLOYDS.	
PLATE	$2\frac{1}{2}$ x 100 = 67%
RIVETS	$2\frac{1}{2}$ x 100 = 70.6%
FRONT TUBE PLATE	$4\frac{1}{2}$ x 100 = 35.1%
BACK TUBE PLATE	$4\frac{1}{2}$ x 100 = 37.5%
SHELL	$20\frac{1}{2}$ (14-2) x 35-1 = 106.2 LBS
FRONT TUBE PLATE	$20\frac{1}{2}$ (12-2) x 37-5 = 109.6 LBS
BACK TUBE PLATE	$20\frac{1}{2}$ (12-2) x 37-5 = 103.4 LBS
FURNACE	$12\frac{1}{2}$ x (8-5-2) = 112.8 LBS
GRATE RING	$51\frac{1}{2}$ x 12 = 100 LBS

BOARD OF TRADE.	
PLATE	$2\frac{1}{2}$ x 100 = 67%
RIVETS	$2\frac{1}{2}$ x 100 = 74.5%
FRONT TUBE PLATE	$4\frac{1}{2}$ x 100 = 35.1%
BACK TUBE PLATE	$4\frac{1}{2}$ x 100 = 37.5%
SHELL	$20\frac{1}{2}$ (14-2) x 35-1 = 108.1 LBS
FRONT TUBE PLATE	$20\frac{1}{2}$ (12-2) x 37-5 = 136 LBS
BACK TUBE PLATE	$20\frac{1}{2}$ (12-2) x 37-5 = 101 LBS
FURNACE	$12\frac{1}{2}$ x 32 = 103 LBS
GRATE RING	$60\frac{1}{2}$ x 17 = 100 LBS

BUREAU VERITAS.	
PLATE	$2\frac{1}{2}$ x 100 = 122.8 LBS
RIVETS	$2\frac{1}{2}$ x 100 = 113.2 LBS
FRONT TUBE PLATE	$25\frac{1}{2}$ x 100 = 123.9 LBS
BACK TUBE PLATE	$25\frac{1}{2}$ x 100 = 113.3 LBS
FURNACE	$60\frac{1}{2}$ x 17 = 108 LBS



COCHRAN & CO ANNAN LTD.
ENGINEERS & BOILERMAKERS
ANNAN, SCOTLAND.

Approved 10th Aug 1912
PATENT BOILER N° 5925
7'-0" x 15'-0" x 600 x 100 LBS.

SCALE 1 INCH TO 1 FOOT.
SIEMENS MARTIN MILD STEEL PLATES.
TENSILE TESTS:

PLATES NOT EXPOSED TO FLAME OR FLANGED 28 to 32 TONS.
PLATES EXPOSED TO FLAME OR FLANGED EXCEPT FURNACE CROWN 26 to 30 TONS.
FURNACE CROWN 26 to 29 TONS.

DRAWING N° 9195

STANDARD.
SURVEY - LLOYDS.

COCHRAN & Co., ANNAN, Ltd.

Enclosure.

FOR

Messrs

Lloyd's Register

W 649-0056 (2/2)

Cochran & Co Annan Ltd.

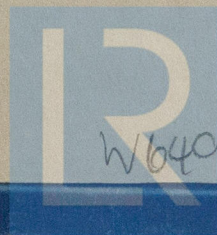
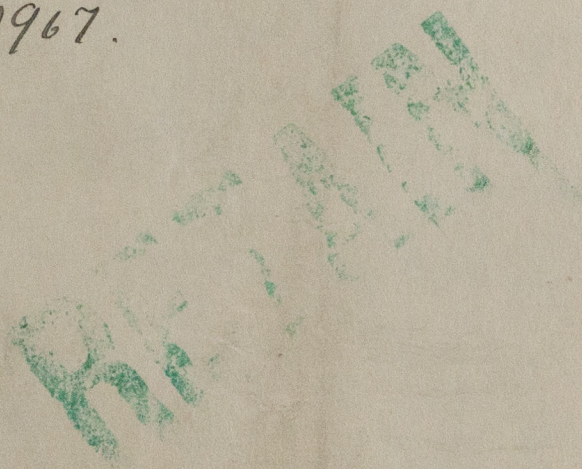
Boiler No 5925

Drawing No 9195.

W.P. 100 lbs.

"Cyrena" Hpl Rpt. (Y.R.) 14582

GLASGOW REPORT No. 31967.



© 2020

W649- Lloyd's Register