

STEEL BOILER FOR NOS 952 941-42-43

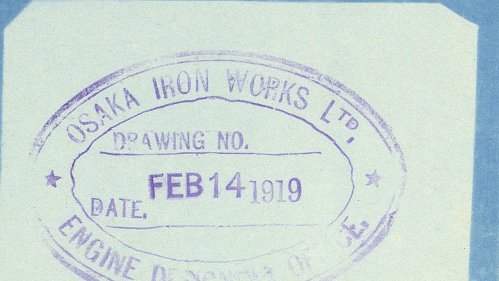
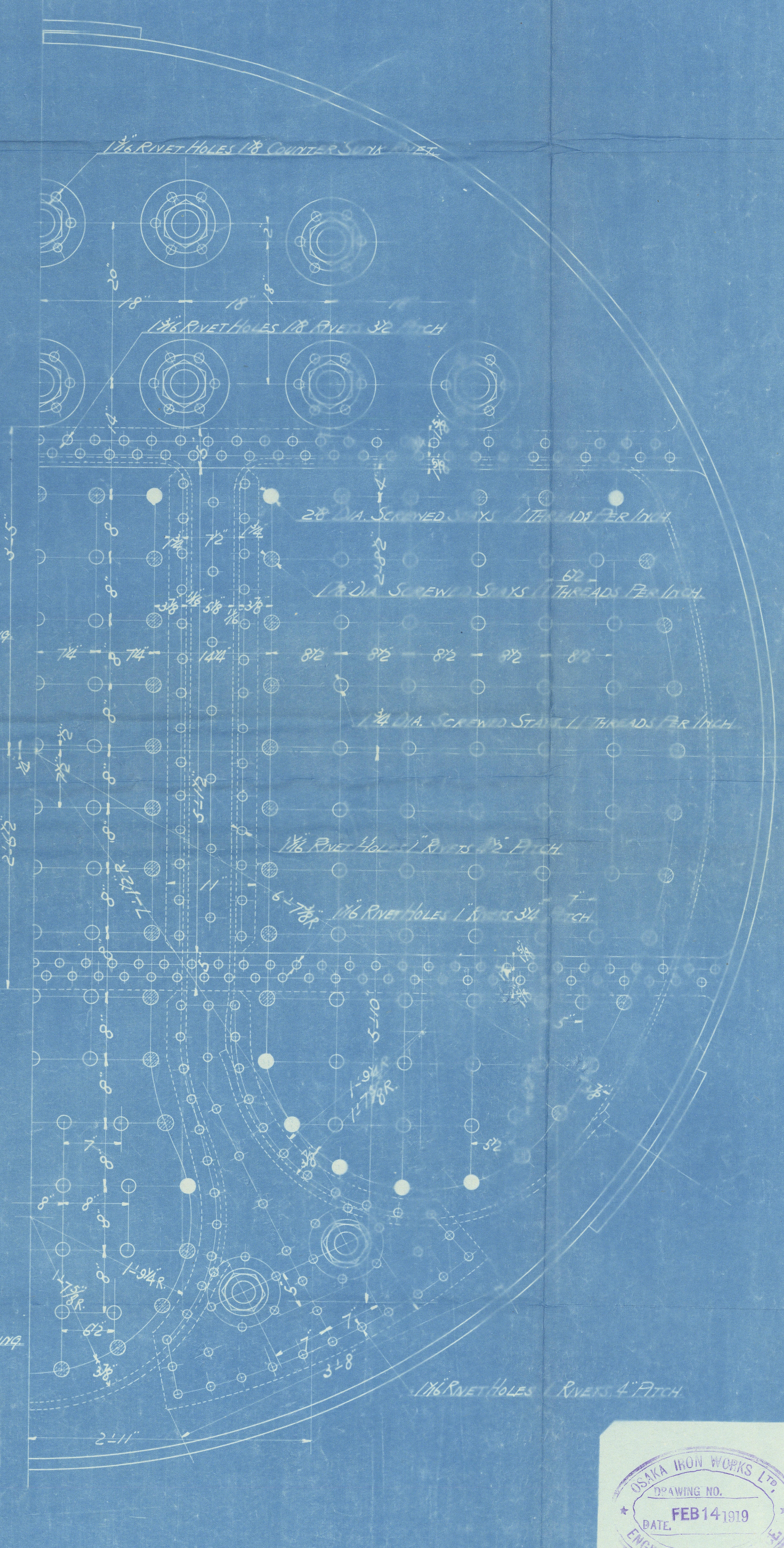
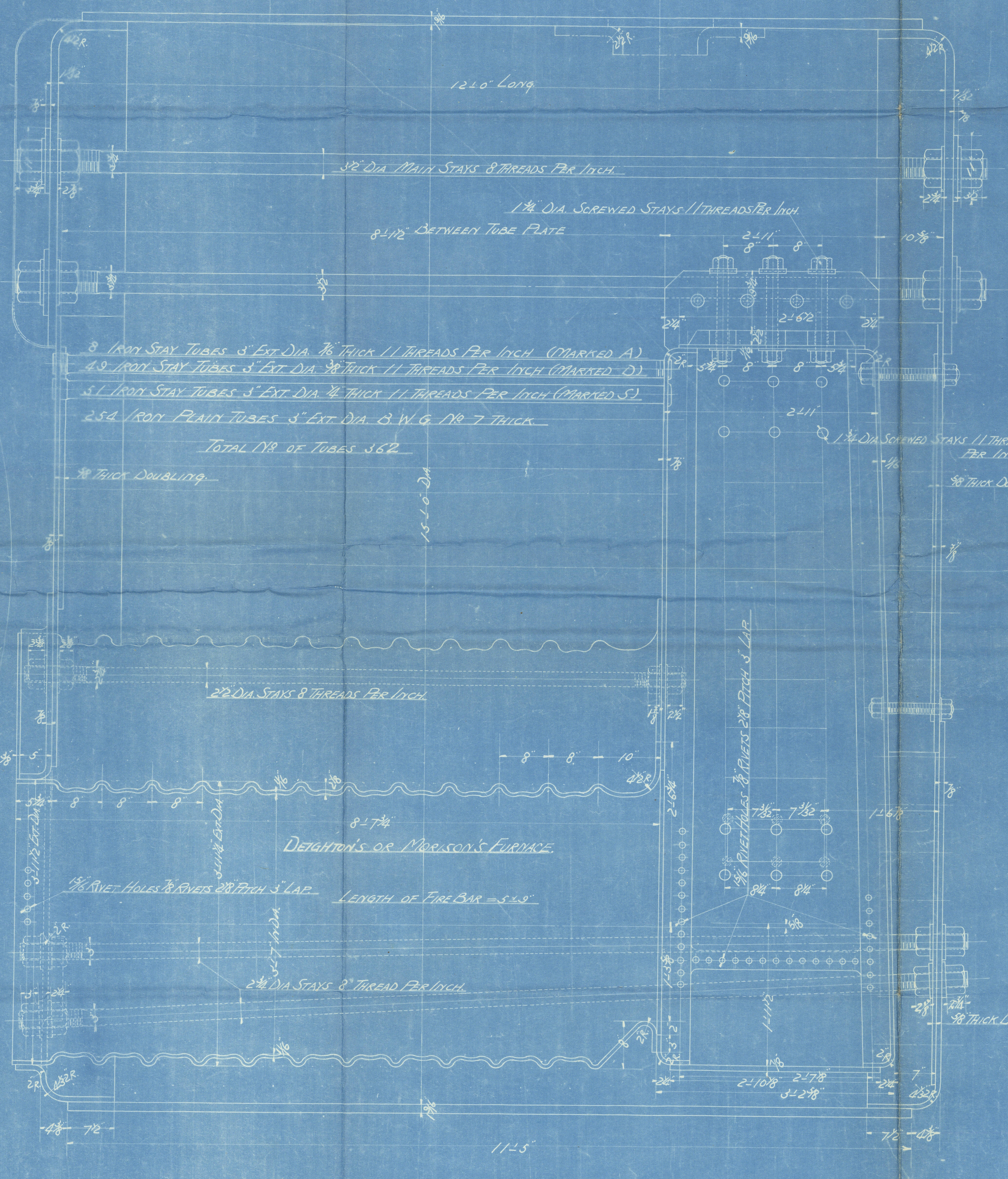
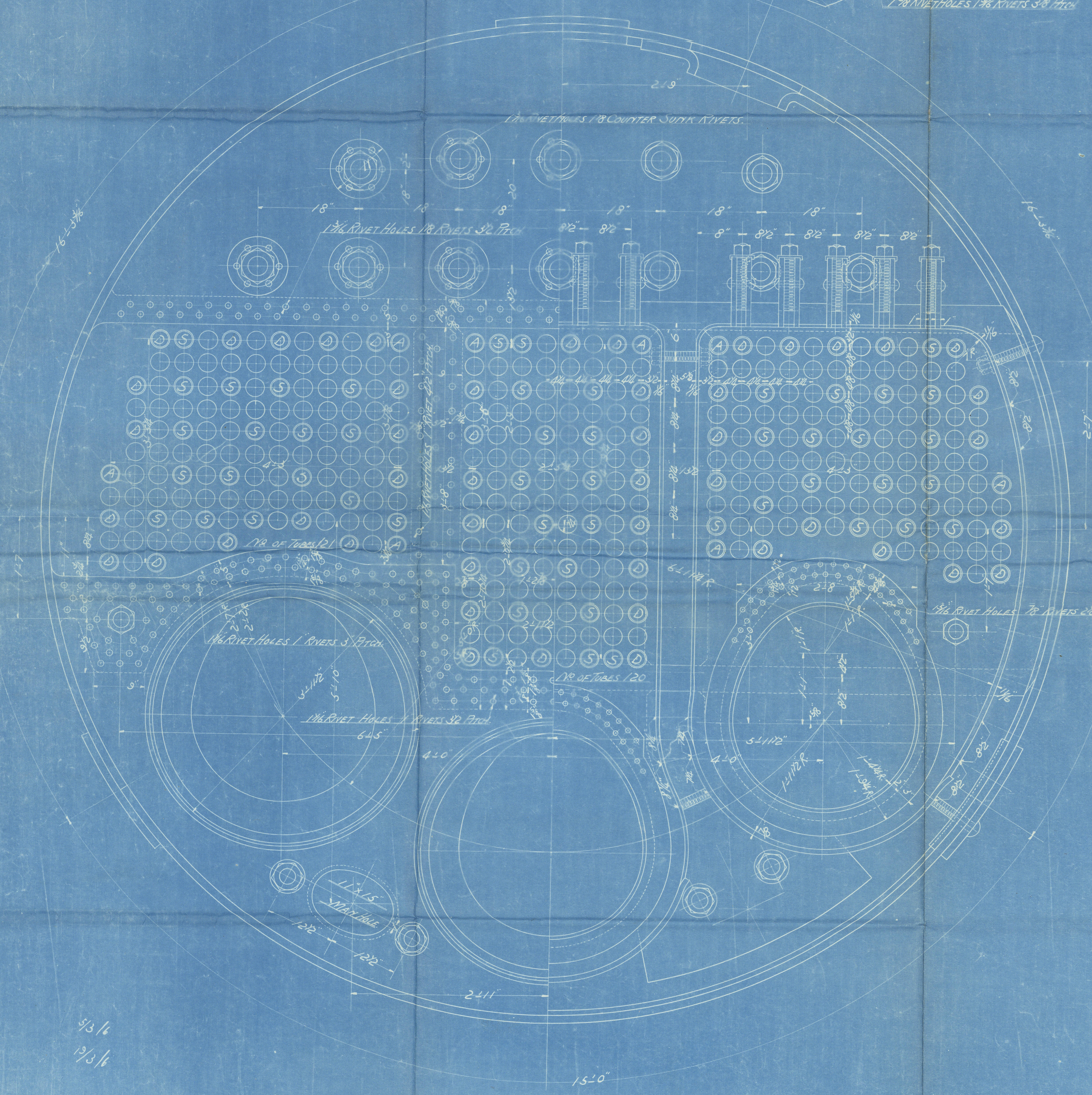
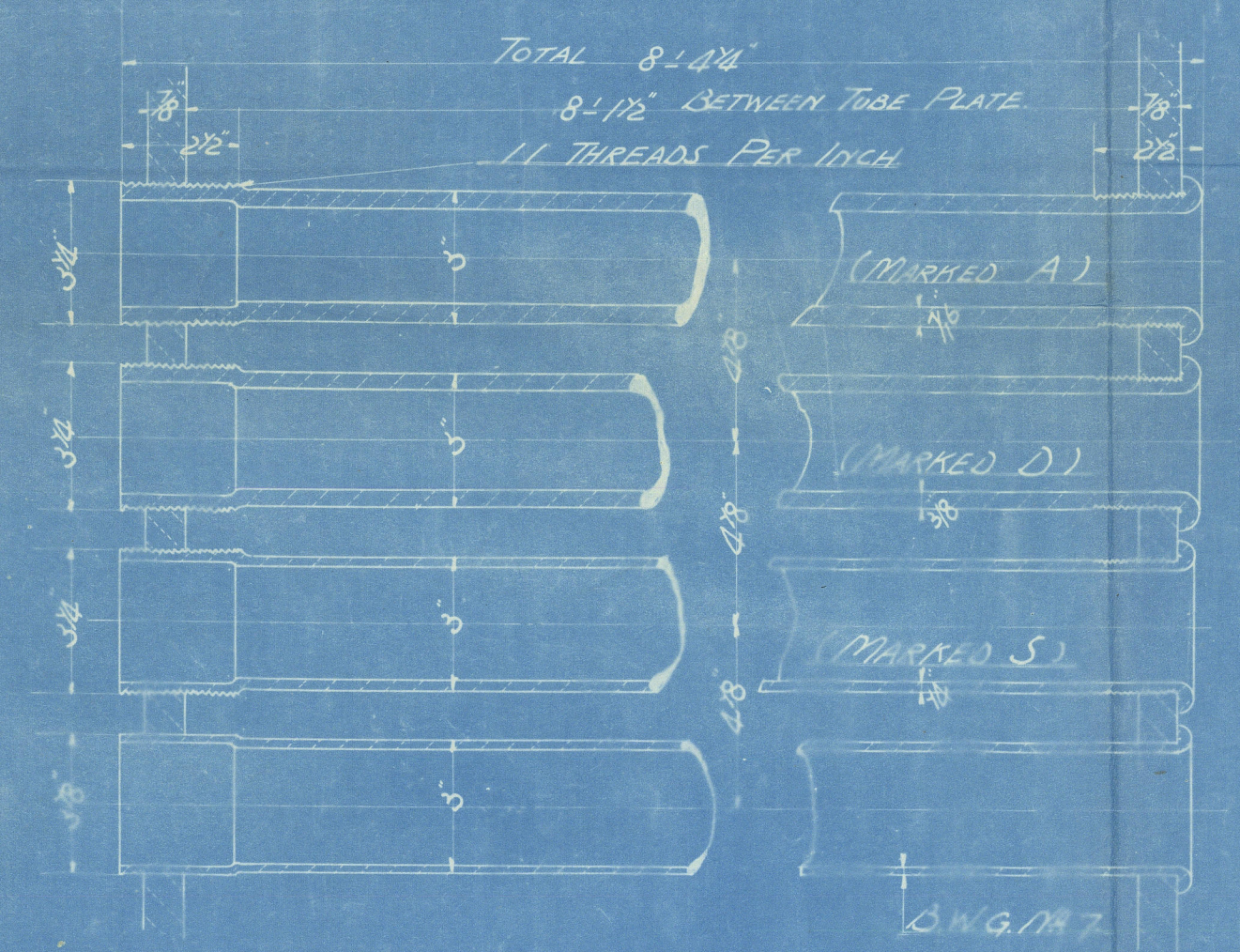
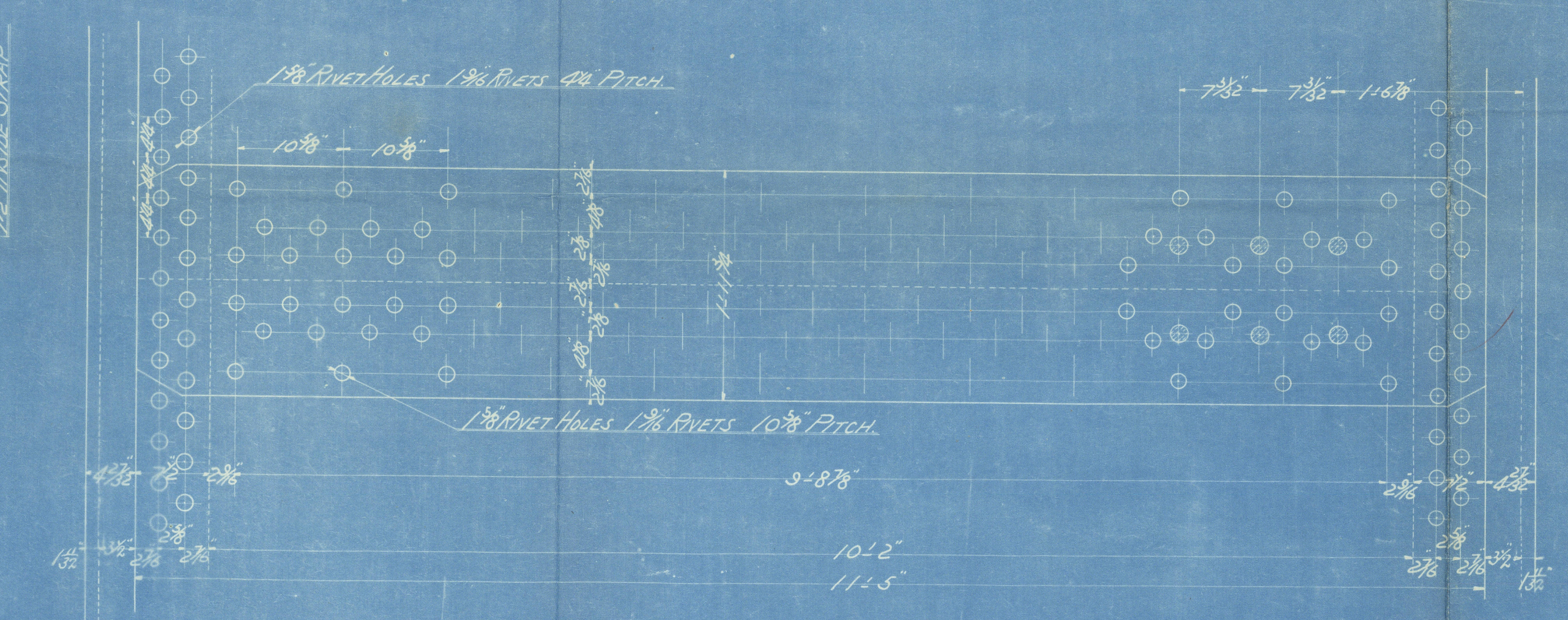
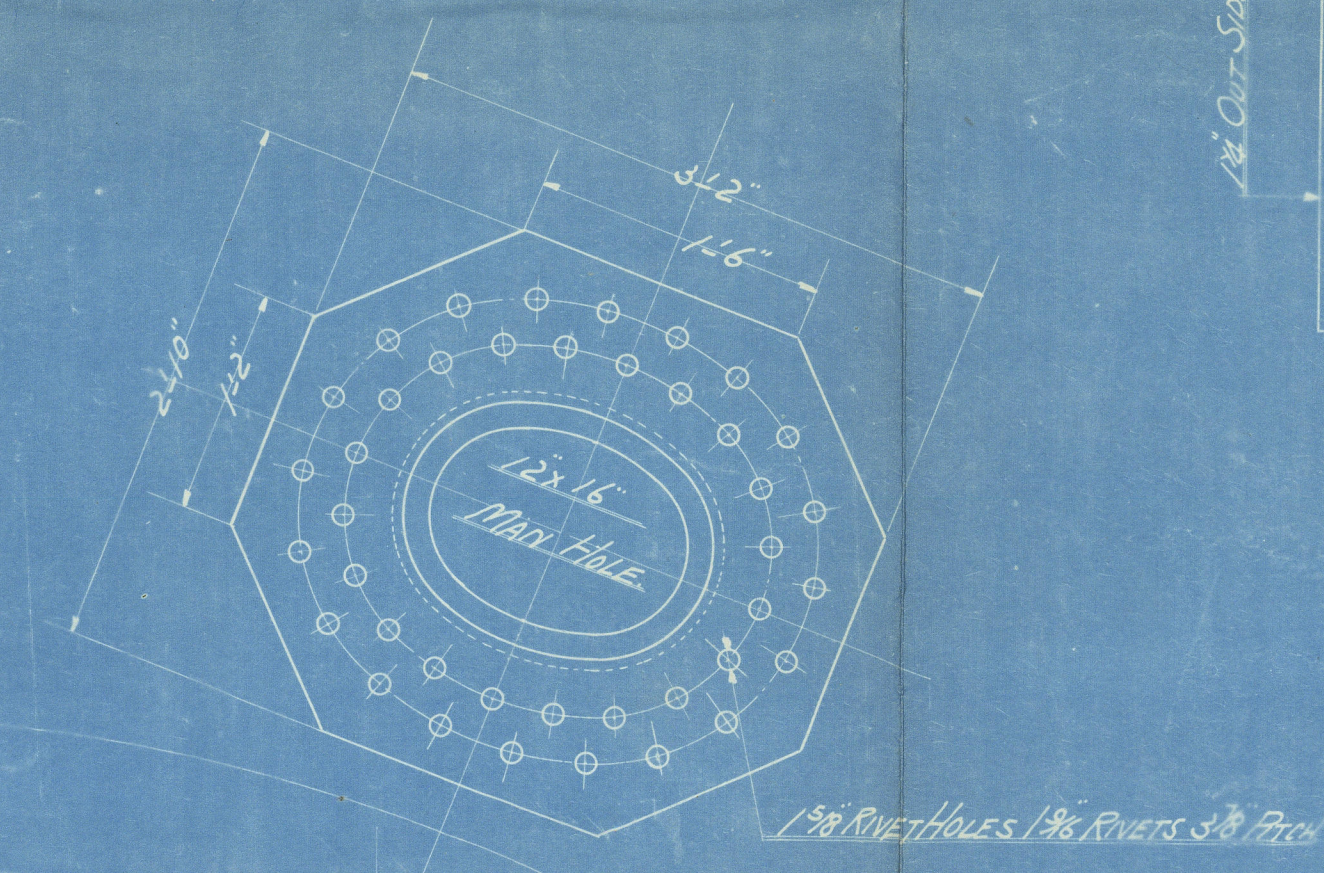
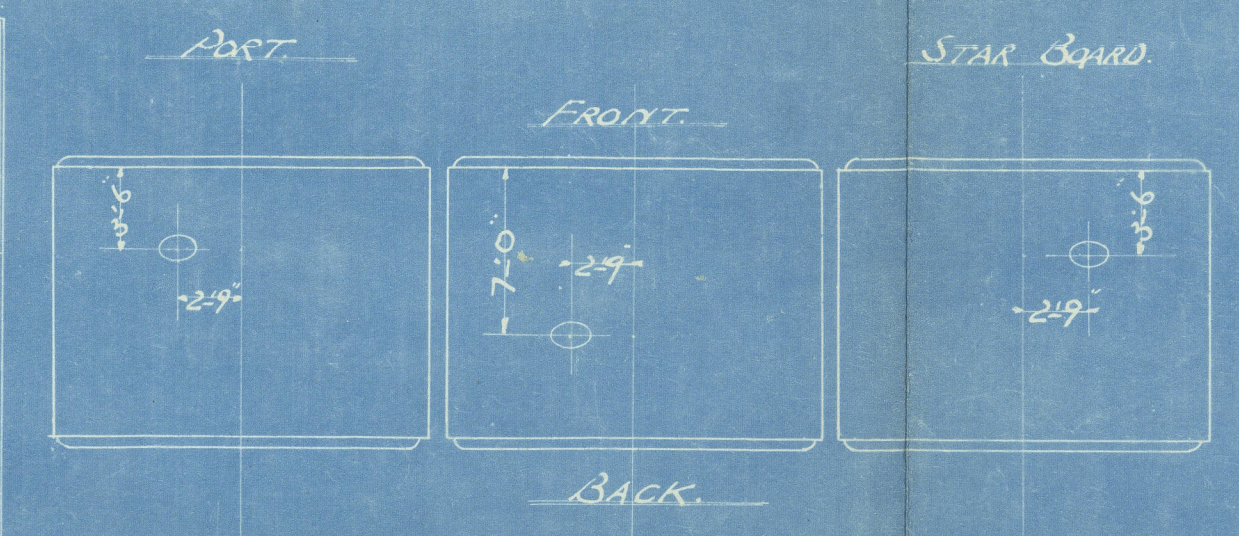
W.P. = 225 LBS/IN²

SCALE 1 IN. TO ONE FT. THREE OFF FOR ONE VESSEL.

SCALE 3 IN. TO ONE FT.

MATERIALS	TENSILE STR. TONS / IN ²	TENSILE STRENGTH EXTENSION IN 8 IN. / IN	PERCENT
SHEET PLATE	26.79-27	60000-60400	23%
BUTT STRAP	27-28	60400-62720	21.5%
8" GIRDER PLATE	28-32	62720-71680	20%
END PLATE CORR. CHAMPS	26-30	58240-67200	23%
SOLID STAY BAR	28-32	62720-71680	20%
SCREWED STAY BAR	26-30	58240-67200	23%
PIVET BAR	26-30	58240-67200	25%

PARTICULARS (ONE BOILER)	
HEATING SURFACE OF TUBES	2310.0 \$
• CORR. C.	268.8 \$
• FURNACE	154.9 \$
TOTAL HEATING SURFACE	2733.7 \$
• GRATE AREA	61.8 \$
•	44.2



Osaka Iron Works.

No. 952. 941-2-3.

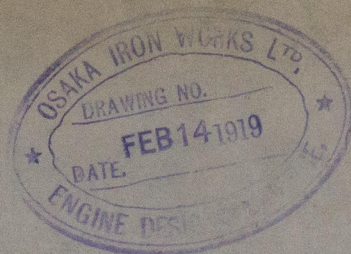
MAIN BOILER.

S. S. Yomei maru

Kobe Report

No. 2521

W648-0065



© 2020

Lloyd's Register
Foundation