

PARTICULARS FOR FREEBOARD

LENGTH BETWEEN PERPES 346.0'
 BREADTH EXTREME 45.0'
 DEPTH MOULDED TO SPAR DECK AT MIDDLE (OF LENGTH) 28.0'
 DO 9.02 MAIN 19.8'
 DO 11.277 CELLULAR BOTTOM 25.44'
 TONNAGE UNDER SPAR DECK 3201
 COEFFICIENT OF FINENESS .81
 BRIDGE & POLE DECK 21740' LONG
 POLE 770' } 70' HIGH
 SCANTLINGS CLASS 100 A.1. SPAR DECK SPECIAL SURVEY
 SPAR DECK STEEL NOT COVERED WITH WOOD
 SHEER AFT 3/8" 1/8" LEN FROM AFT 1/8"
 FORD 7/8" 3/8" FORD 3/8"
 ROUND OF BEAM 11"

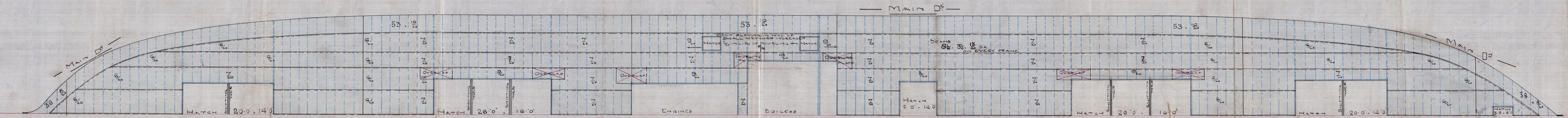
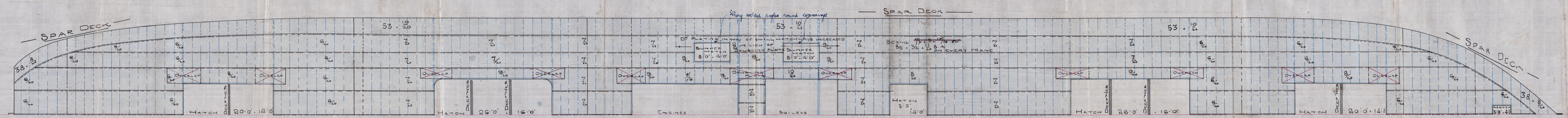
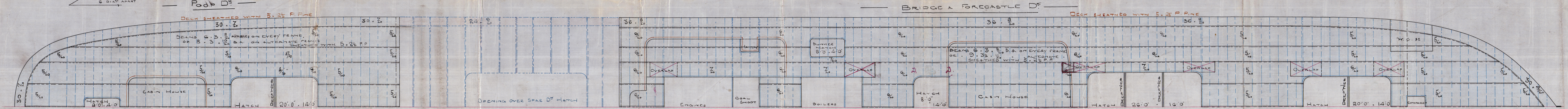
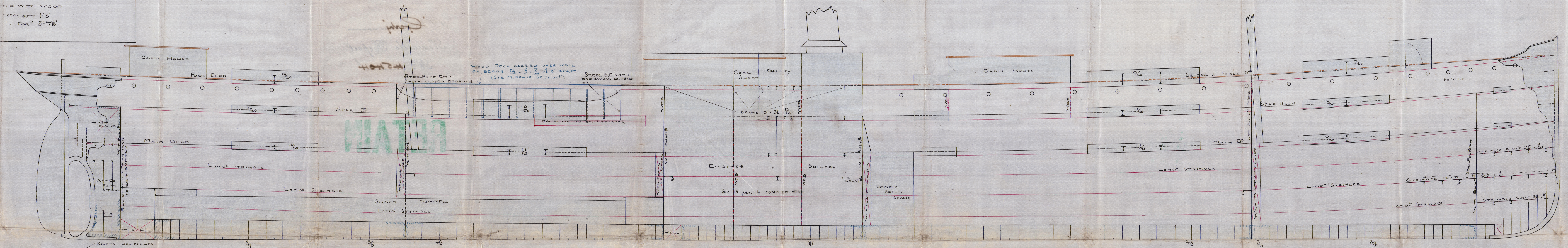
PROFILE & DECK PLANS 1/8 N° 369

DIMENSIONS AS PER RULES

LENGTH 344.12
 BREADTH 44.82
 DEPTH TO MAIN DECK 20.58
 DO SPAR 28.91

CLASS 100 A.1. SPAR DECK

JOHN READHEAD & SONS
 Engineers, Boiler Makers,
 Iron & Steel Ship Builders,
 SOUTH SHIELDS.

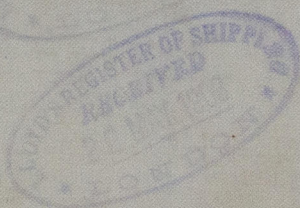
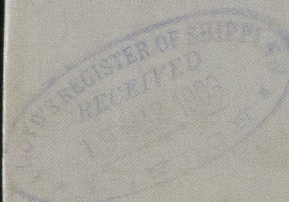


369-

Messrs J. Readhead & Sons

Amended

Profite ^{s/s} "GERTY"



J. P. Gerty

Newcastle Report

No 45404

RETAIN



© 2019

Lloyd's Register
Foundation
W647-0041