

Means Pickensville, S. I. No. 142

BOILERS. N^o 795. 2 OFF.

FITTED WITH HOWDEN'S FORCED DRAUGHT.

WORKING PRESSURE 180 LBS. PER SQ. INCH TO LLOYD'S REQUIREMENTS.

ALL HOLES TO BE DRILLED IN POSITION.

ALL PLATES, MAIN STAYS & RIVETS OF STEEL. SCREEN STAYS & TUBES OF IRON. TUBES LAP WELDED.

TENSILE STRENGTH OF SHELL PLATES & BUTTSTRAPS TO BE NOT LESS THAN 28 TONS NOR MORE THAN 32 TONS PER SQ. INCH.

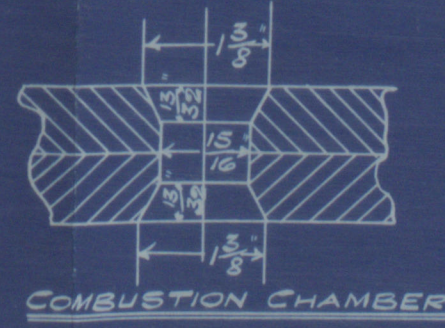
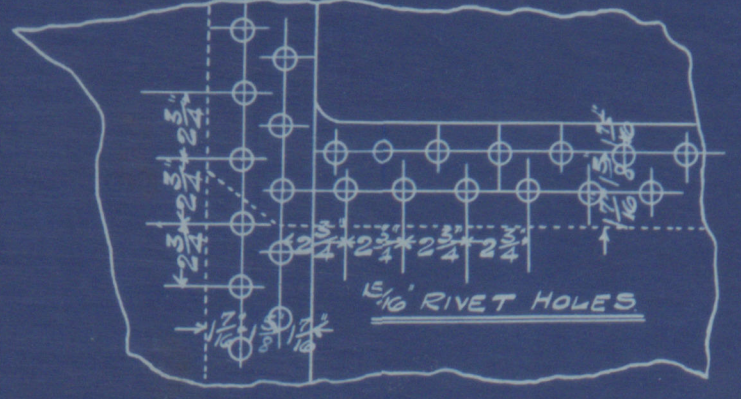
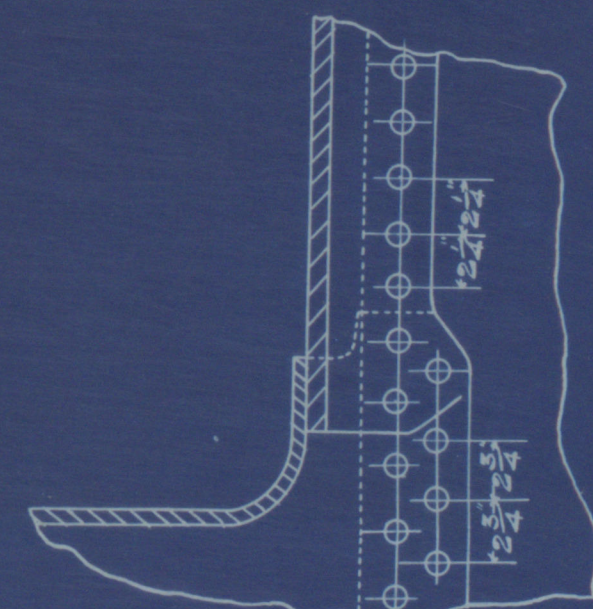
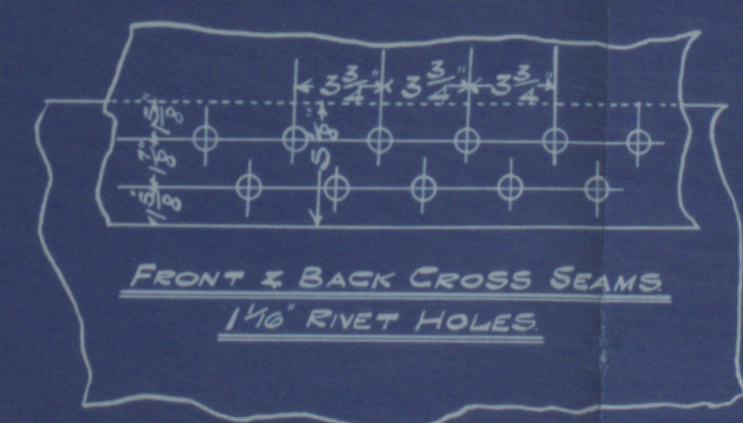
OTHER PLATES	20	30 1/2
RIVETS	20	30
LONGITUDINAL STAYS	21	32

IN ALL CASES THE ELONGATION IS TO BE NOT LESS THAN 20% IN A LENGTH OF EIGHT INCHES.

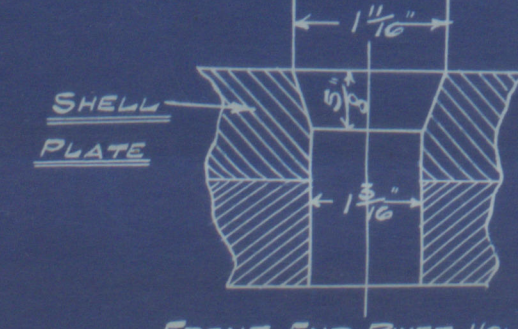
SCALE 1" = 1 FOOT.

21.7.1903.

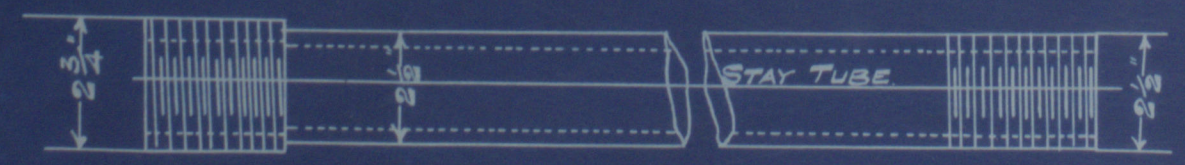
SURFACES	50 FT.
346 TUBES	1820
5 FIRE BOXES	187.5
5 FURNACES	150
BACK TUBE PLATE	30.2
FRONT	32
TOTAL ONE BOILER	2231.5
GRAND TOTAL	4463
GRATE (6" G. BARS)	
AREA THRO' TUBES	
RATIO AREA THRO' TUBES GRATE SURFACE	
STEAM SPACE TO 6" ABOVE TUBES = CUBIC FEET	



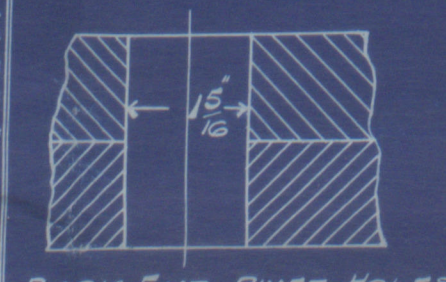
BACK END OF FURNACE & COMBUSTION CHAMBER RIVETING.



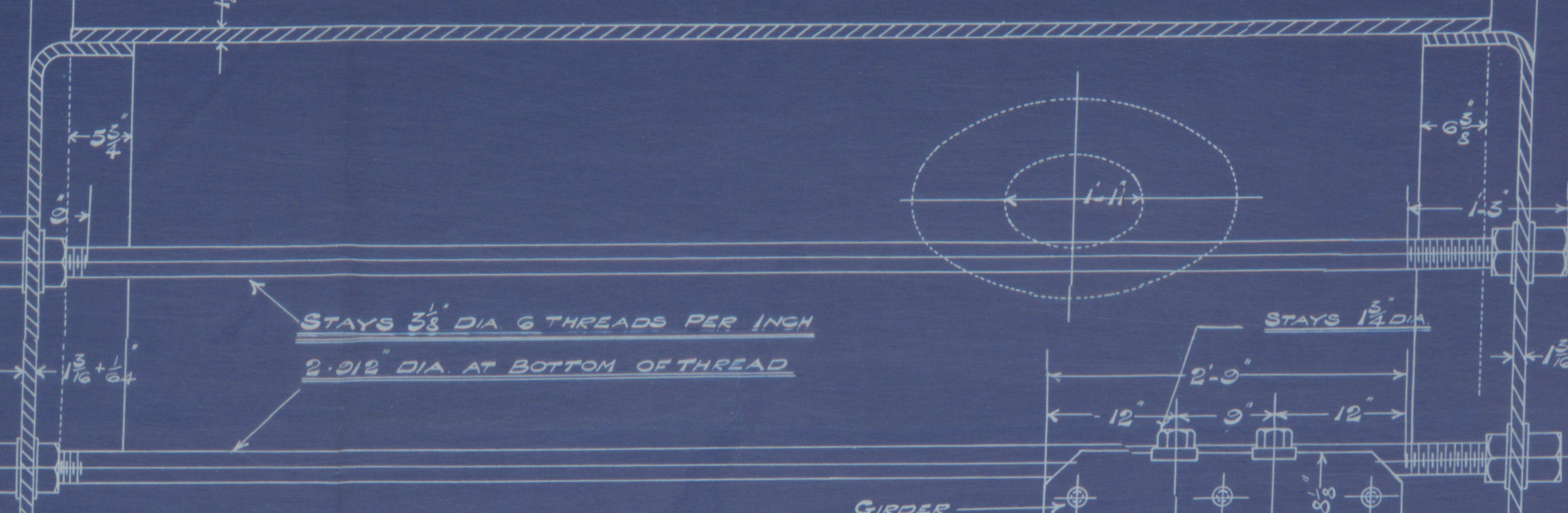
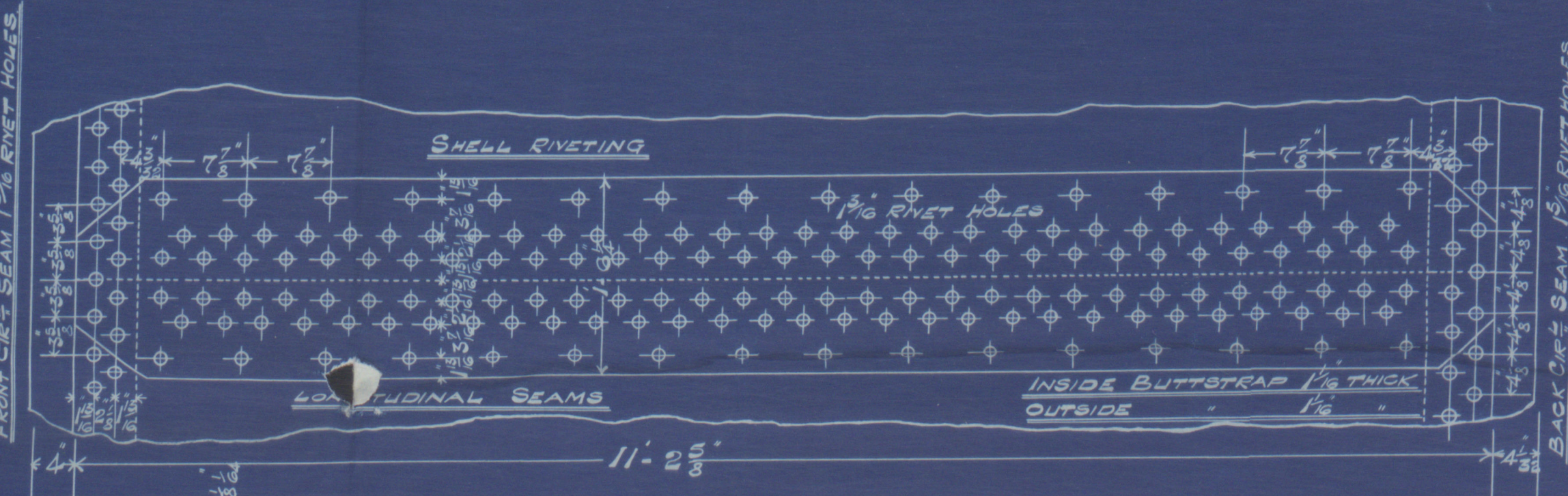
FRONT END RIVET HOLES. SCALE HALF SIZE.



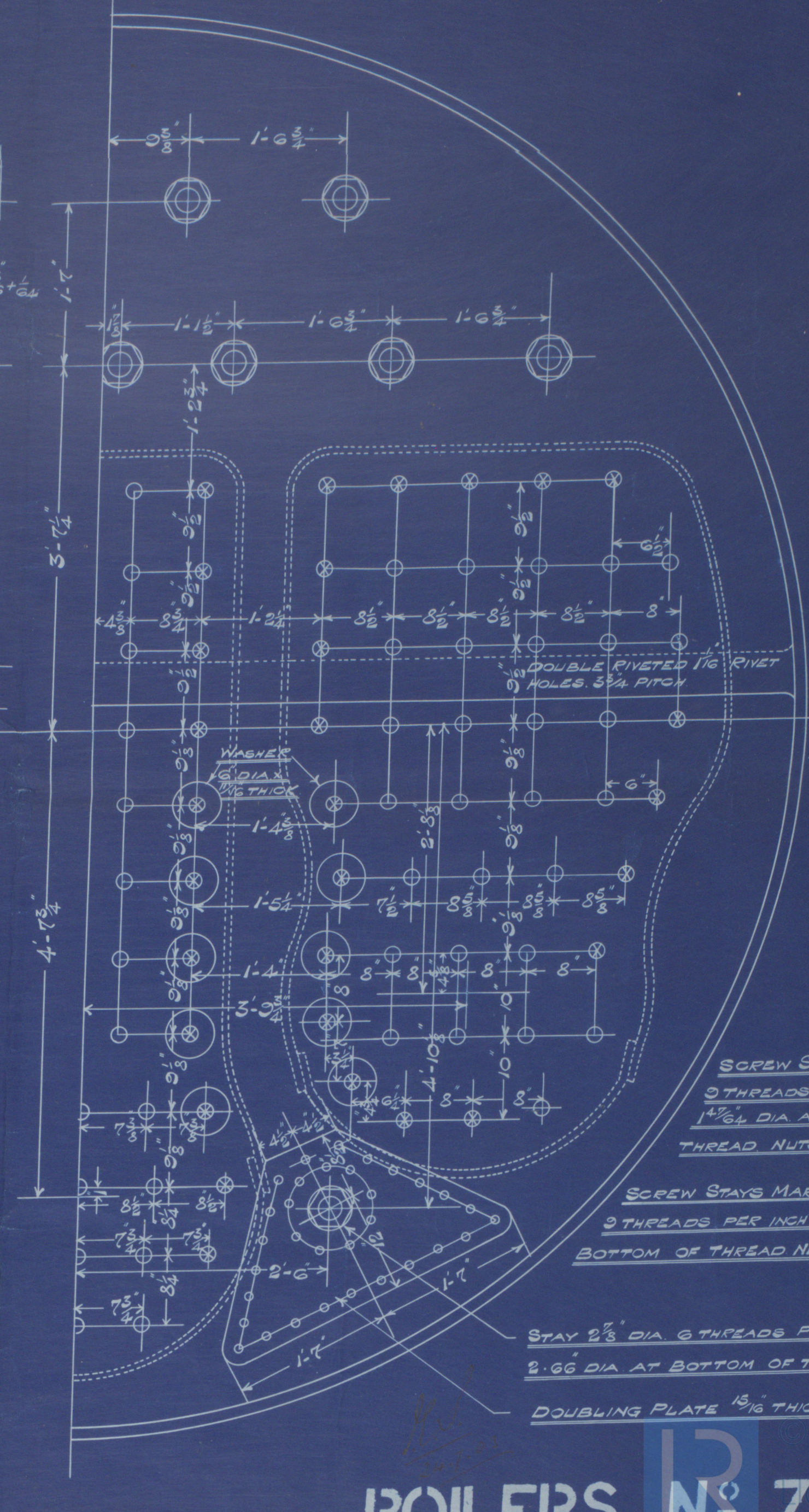
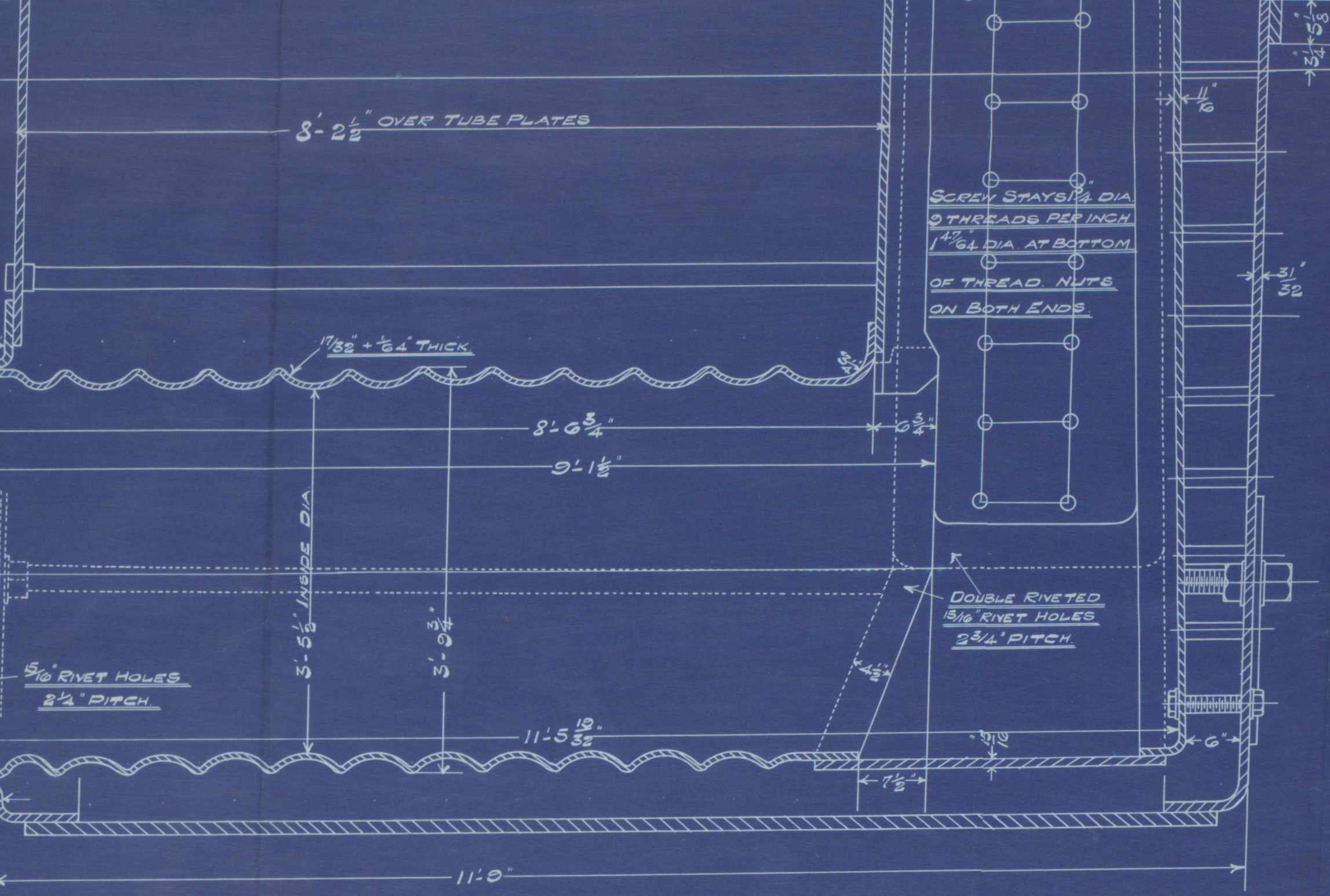
STAY TUBE THICK 5/16" THICK 3/8" PLAIN 1/8" BUSH.



BACK END RIVET HOLES. SCALE HALF SIZE.



346 TUBES IN EACH BOILER. PLAIN TUBES 2 1/2" EXT. DIA SWELLED TO 2 3/4" EXT. DIA AT FRONT END. NO. 8 L.S.G. THICK STAY 2 1/2" DIA. 6 THREADS PER INCH. 5/16" DIA. AT BOTTOM OF THREAD NUTS ON BOTH ENDS. TUBES TO BE BEADED OVER AT BACK ENDS.



BACK CROSS SEAM RIVET HOLES. SCALE HALF SIZE.

SCREW STAYS 1 3/4" DIA. 9 THREADS PER INCH. 1 1/2" DIA. AT BOTTOM OF THREAD NUTS ON BOTH ENDS. SCREW STAYS MARKED THUS 2" DIA. 9 THREADS PER INCH. 1 1/2" DIA. AT BOTTOM OF THREAD NUTS ON BOTH ENDS.

STAY 2 1/2" DIA. 6 THREADS PER INCH. 2.012 DIA. AT BOTTOM OF THREAD. DOUBLING PLATE 1/8" THICK. 1 1/8" RIVET HOLES.

J. WALDEN & CO
PRINTED

Wm. Pickersgill & 142

4 Clark's c 495

2 Main Boilers

W. P. = 180 lbs

N^o 2226
Lloyd's Test.
360 lbs.

Start → 22.12.03 } ab
End → 30.12.03 }

RECEIVED
24 JUL 1903
LLOYD'S

Note The replate Boilers (Lat Boilers)
was damaged (C 795 1/2) ab
s/s "Saint Egbert"
Sld. F. E. No. 21668.

RETAIN

For
Encls

W639-0264