

T.S.S. LEONARD

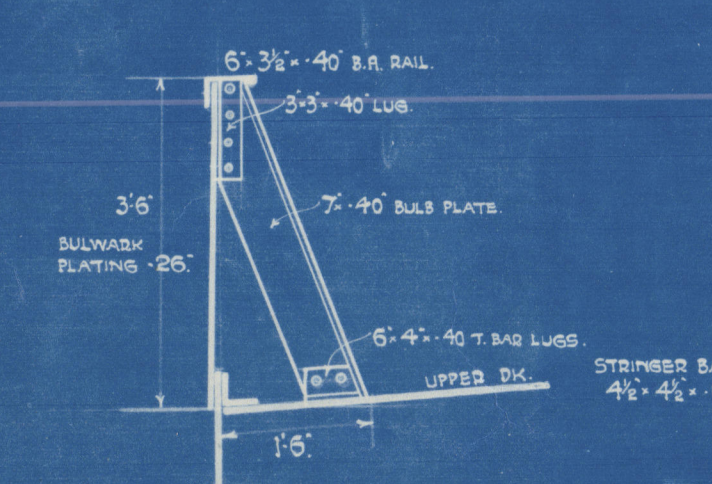
PRINCIPAL DIMENSIONS 307'0" 65'0" BEAM x 23'0" MOULDER

MIDSHIP SECTION.

SCALE 1/4" = 1 FOOT

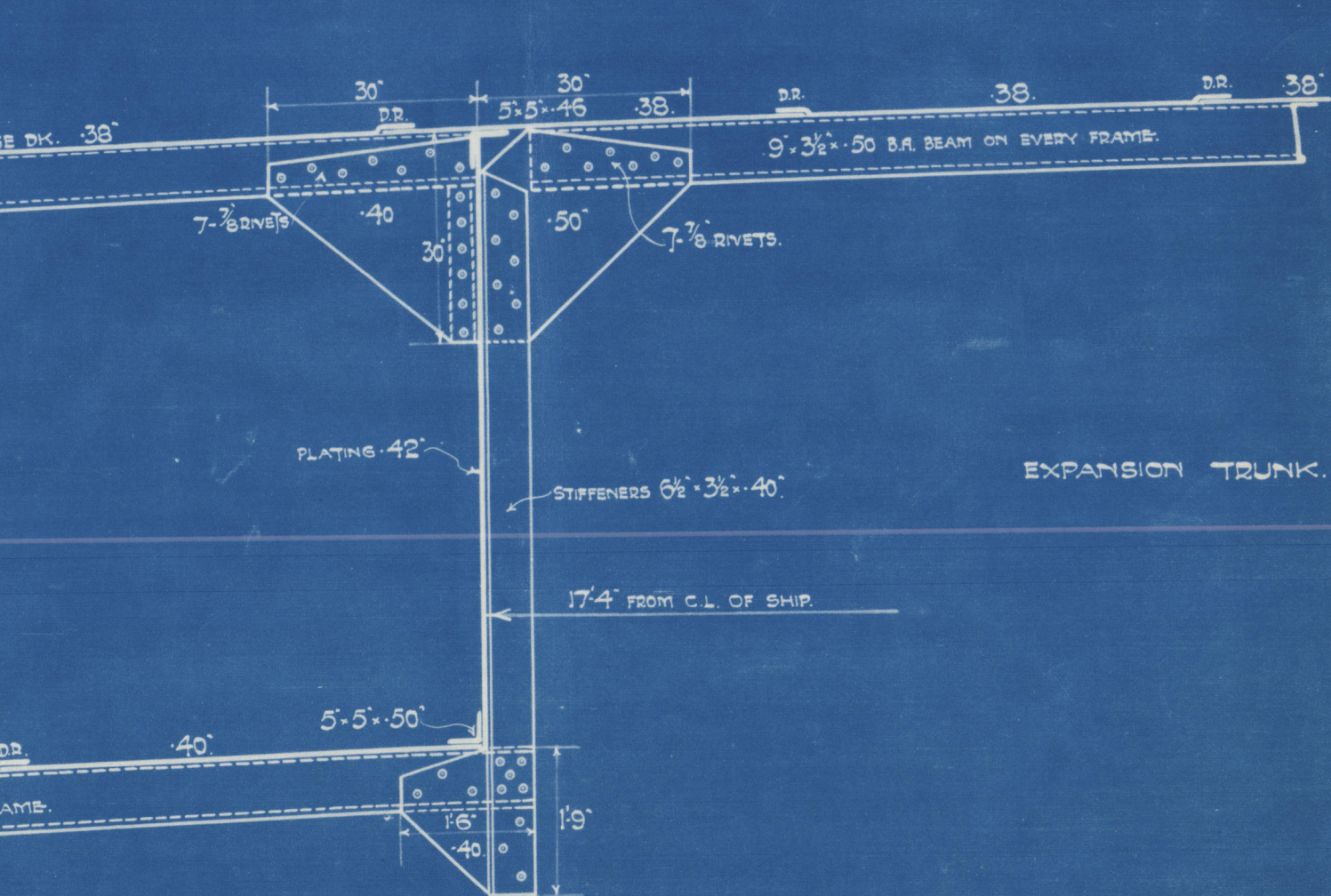
SECTION THRU BULWARK.

FOR EXTENT SEE PROFILE.



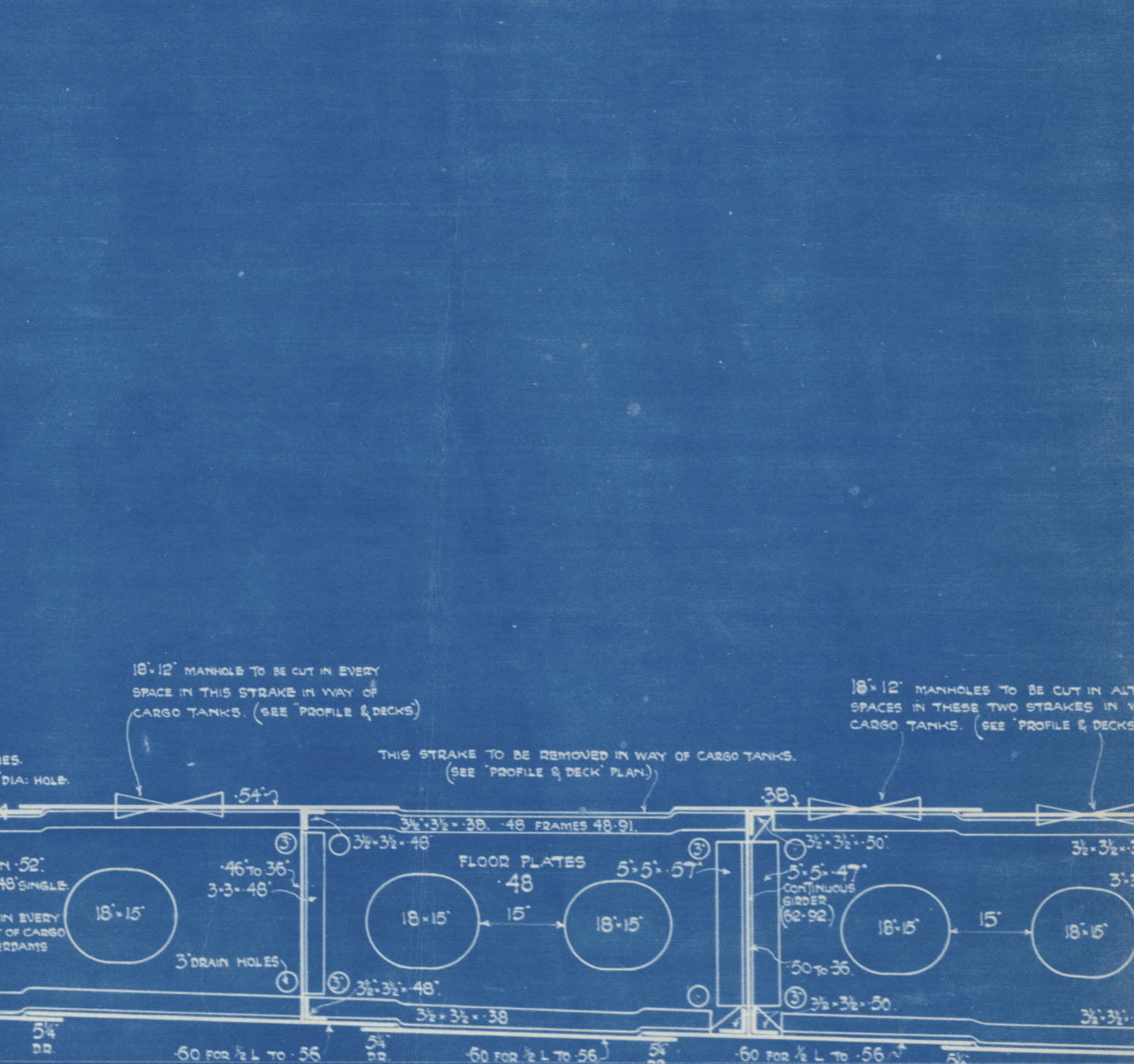
SECTION THRU INTERMEDIATE FRAME.

FORECASTLE DECK. STRINGER BAR 3 1/2" x 3/4"
STIFFENERS PLATE 3/8"
PLATING 20' SHEATHED WITH 2" x 3" PINE.



STEEL 10" x 2 1/2"
STERNPOST OF U SECTION 10" x 16" 2" THICK
INTERMEDIATE FRAMES 7 1/2" x 3/4" 42 BA SPACED 26' APART
PEAK FRAMES 7 1/2" x 3/4" 45 BA SPACED 24' APART
INTERMEDIATE FRAMES IN FORE PEAK 7 1/2" x 3/4" 42 BA SPACED 12' APART

MAIN TANK.



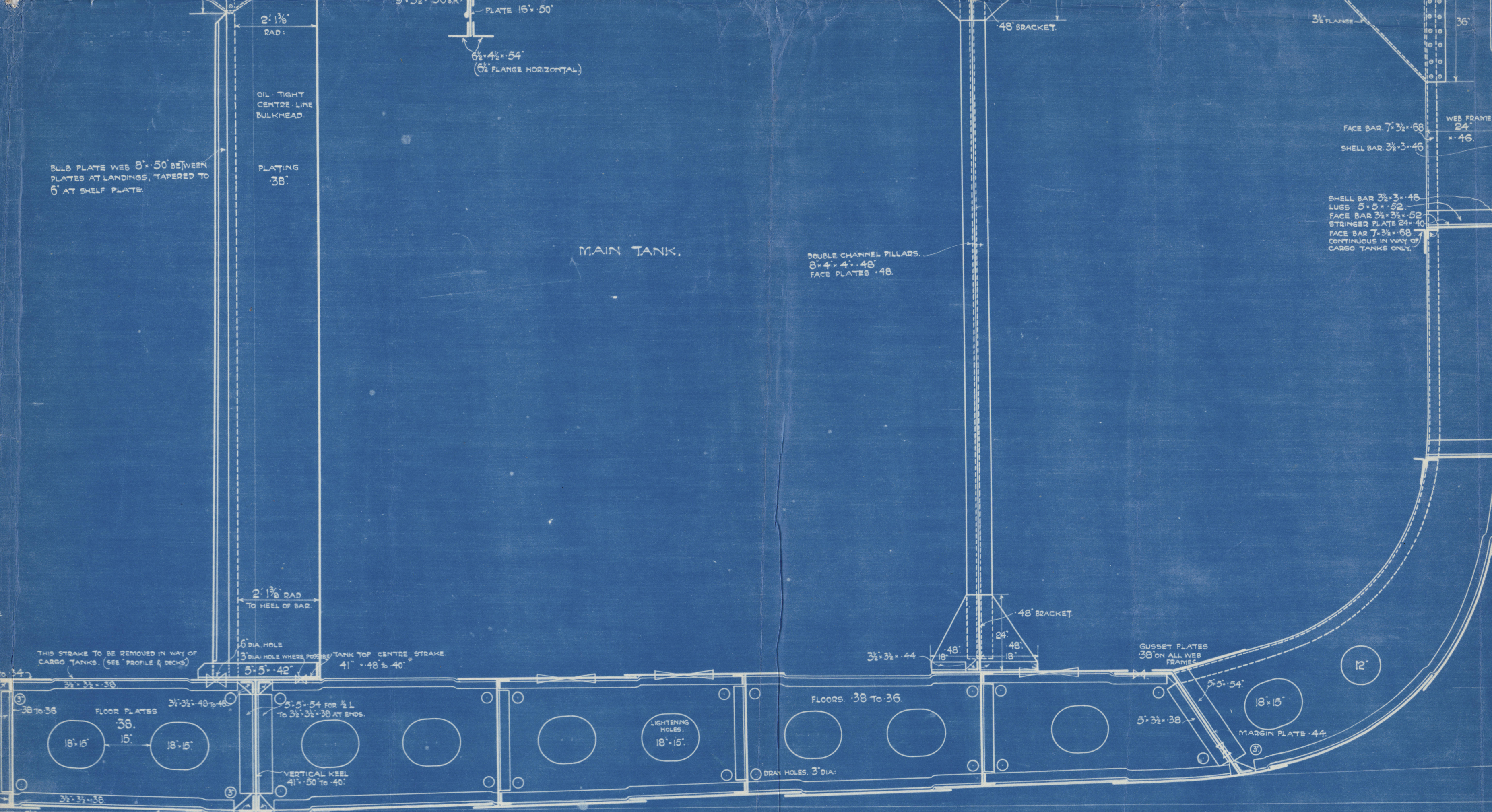
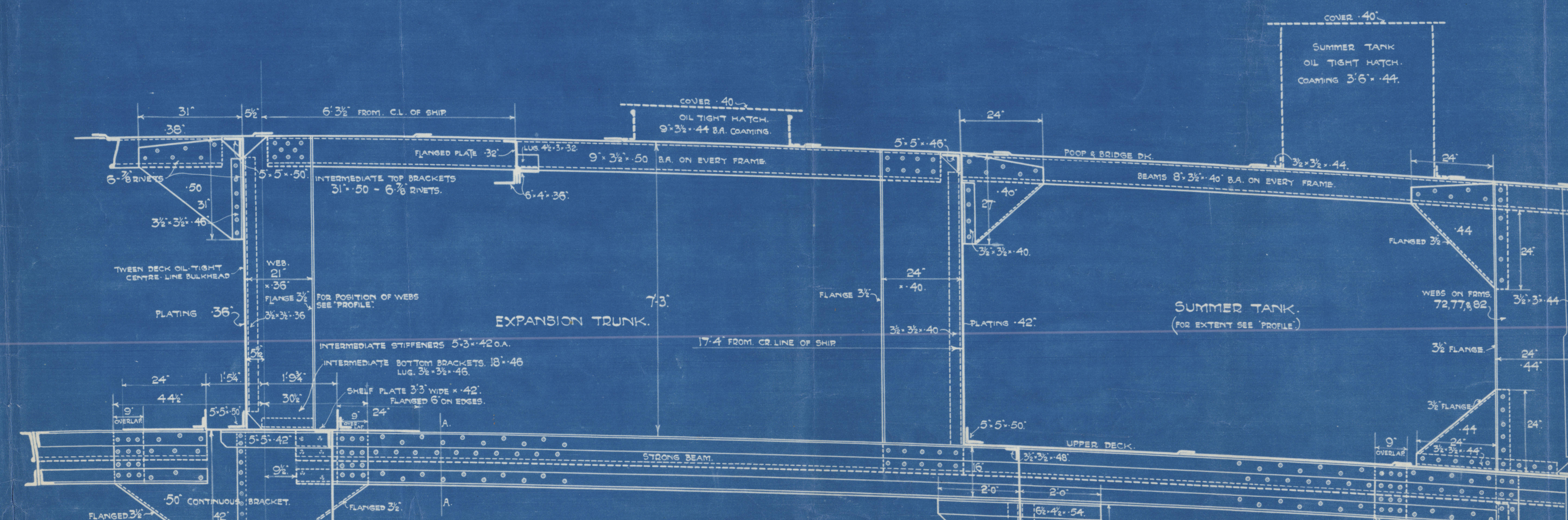
NUMERALS.

TRANSVERSE NUMBER	840	834.05	88
LONGITUDINAL NUMBER	140.0	307.05	27.016
PROPORTIONS	13.34		
	23'0" x 3'0" 19'7"		

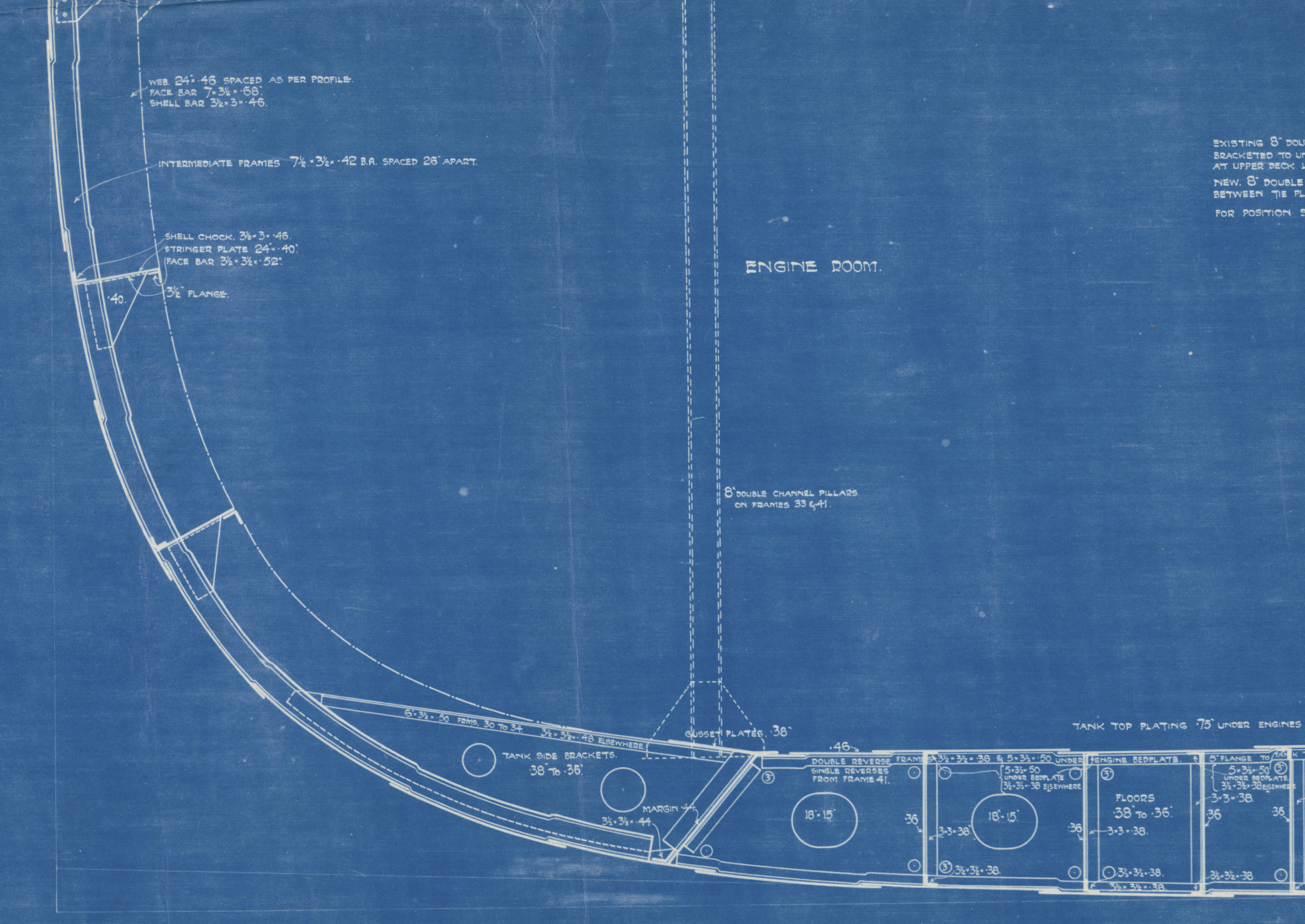
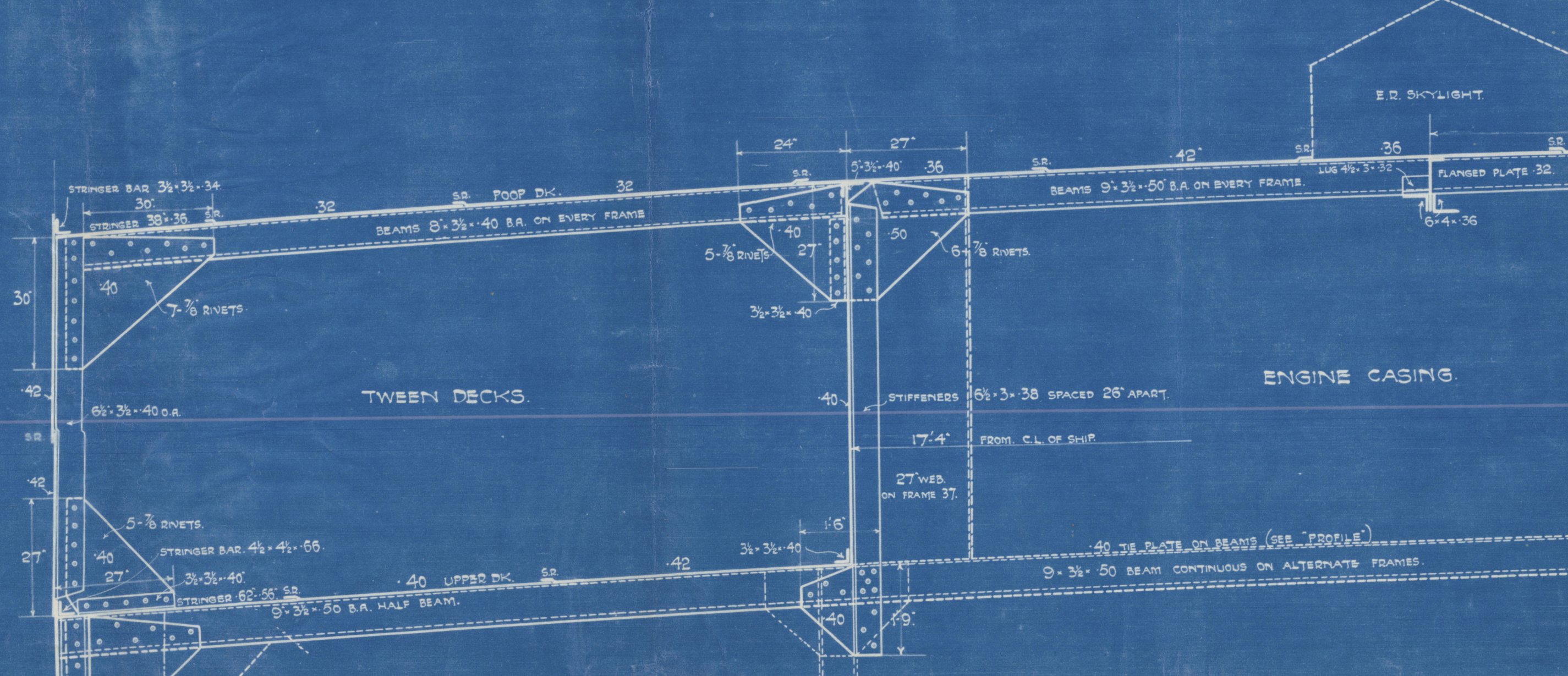
EQUIPMENT NUMBER. 28,774. GRADE 273/297 '0'

ROVER ANCHOR STOCKLESS	50.0 CUTS	COLLECTIVE WEIGHT
" "	27.5	149.5 CUTS
" "	42.0	
STEEL ANCHOR (EX STOCK)	12.0 CUTS	
STEEL ANCHOR (EX STOCK)	6.0 CUTS	
300 PATENT STEEL WIRE CABLES 2" DIAMETER		
30 PATENT STEEL WIRE 4 1/2"		
120 PATENT STEEL WIRE 4 1/2"		
4000 PATENT STEEL WIRE 7"		

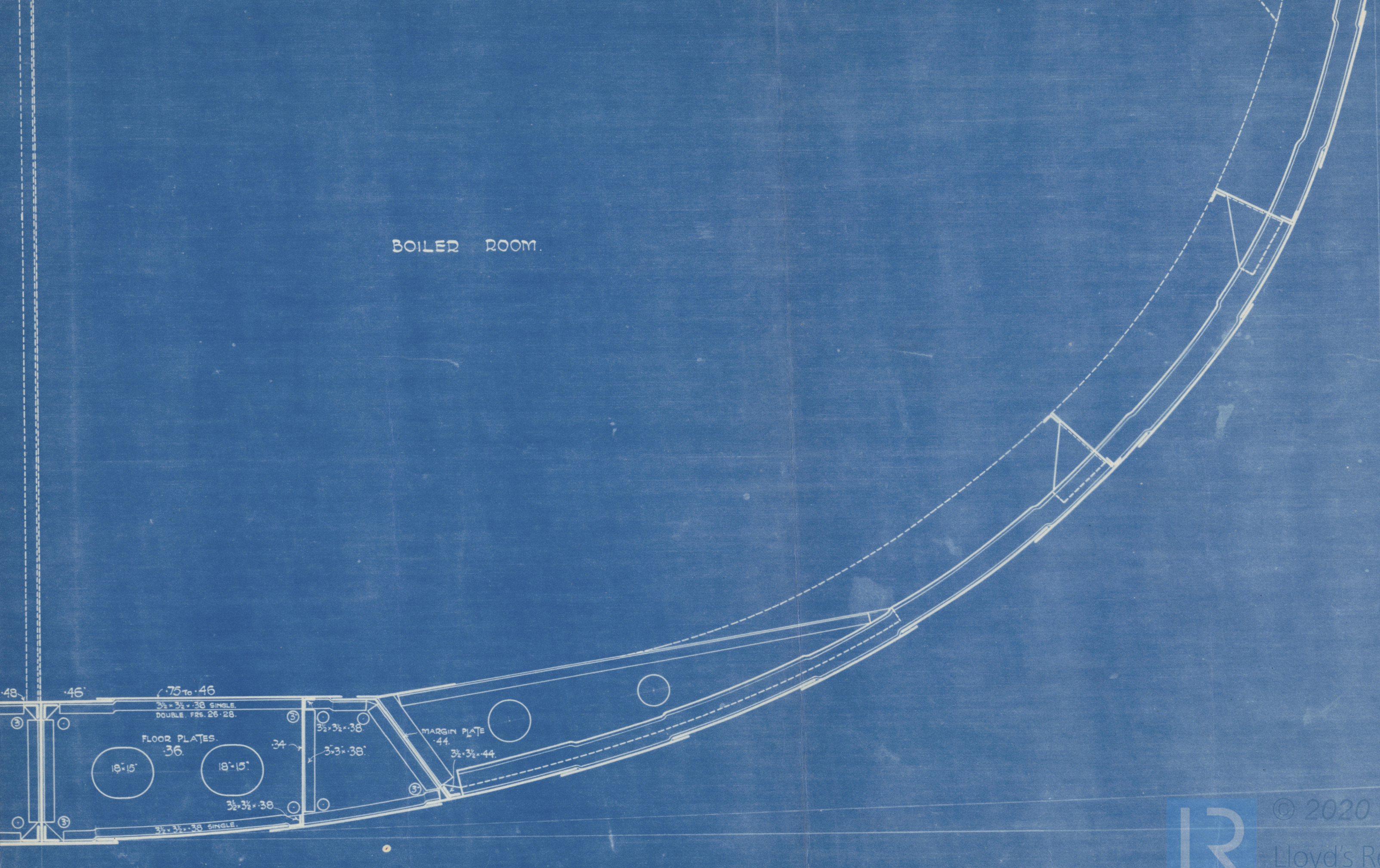
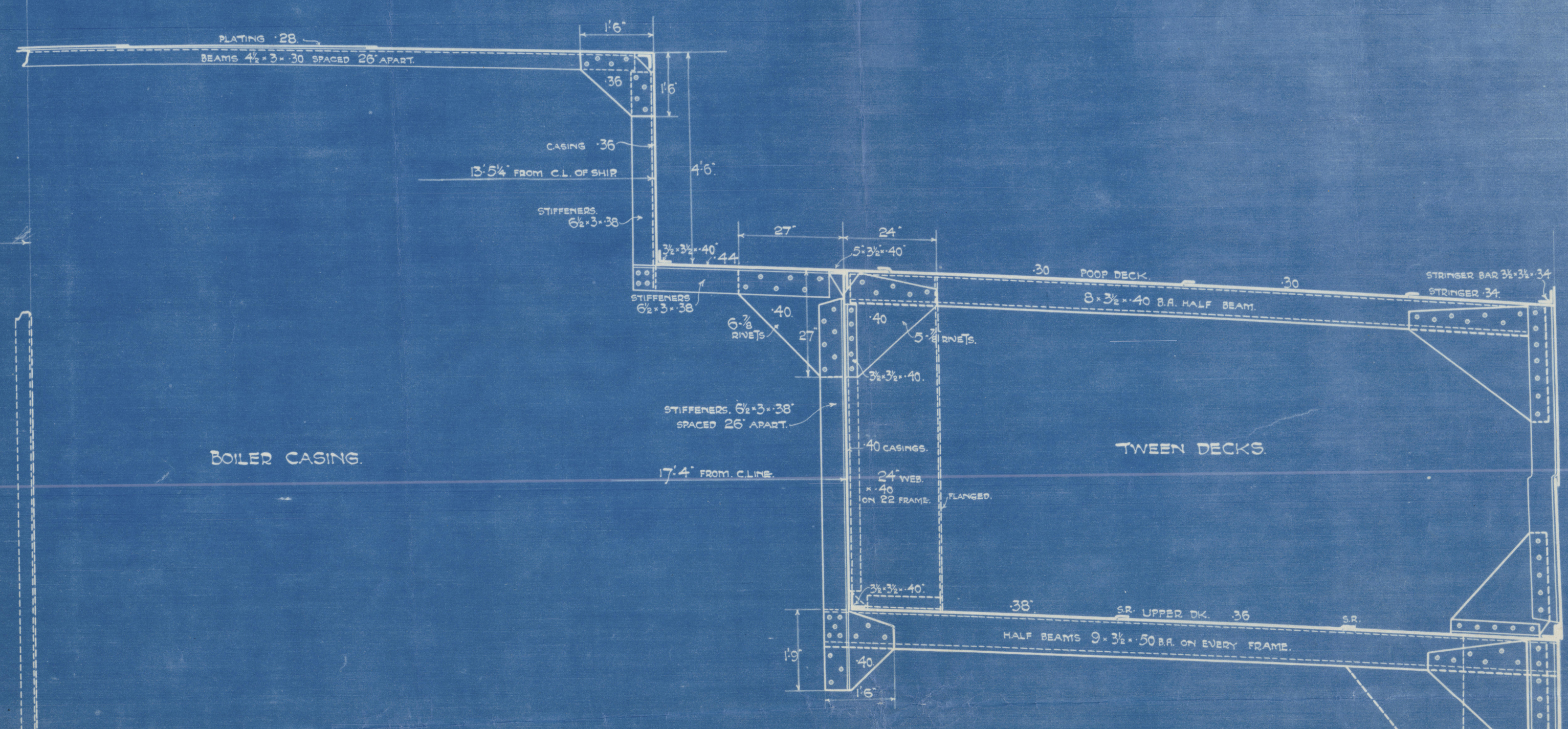
SECTION THRU WEB FRAME.



SECTION THRU ENGINE ROOM.



SECTION THRU BOILER ROOM.



664
11.2.21

S/S LEONARD

MIDSHIP SECTION

11-2-21

(2)

S.S. LIMAX EX LEONARD
NEWCASTLE ON TYNE.
Report No. 74318

NEWCASTLE ON TYNE.
Report No. 74318

W639-004 2020

Lloyd's Register
 Foundation