

No 806 BOILERS FOR TWIN SCREW TRAIN FERRY

FOR THE
NATIONAL AND TRANSCONTINENTAL RY CO. QUEBEC - LEVIS

EIGHT BOILERS THIS

194 IRON TUBES IN EACH BOILER 6' 7" LONG x 3 1/2" EX. DIA. x 11/8" S.W.G. (INCLUDING 50 STAY TUBES PER TUBE)

HEATING SURFACE OF TUBES 1050 sq. ft.

FRAMING SURF. 850

TOTAL 1300 sq. ft. x 8 S.W.G. 10400 sq. ft.

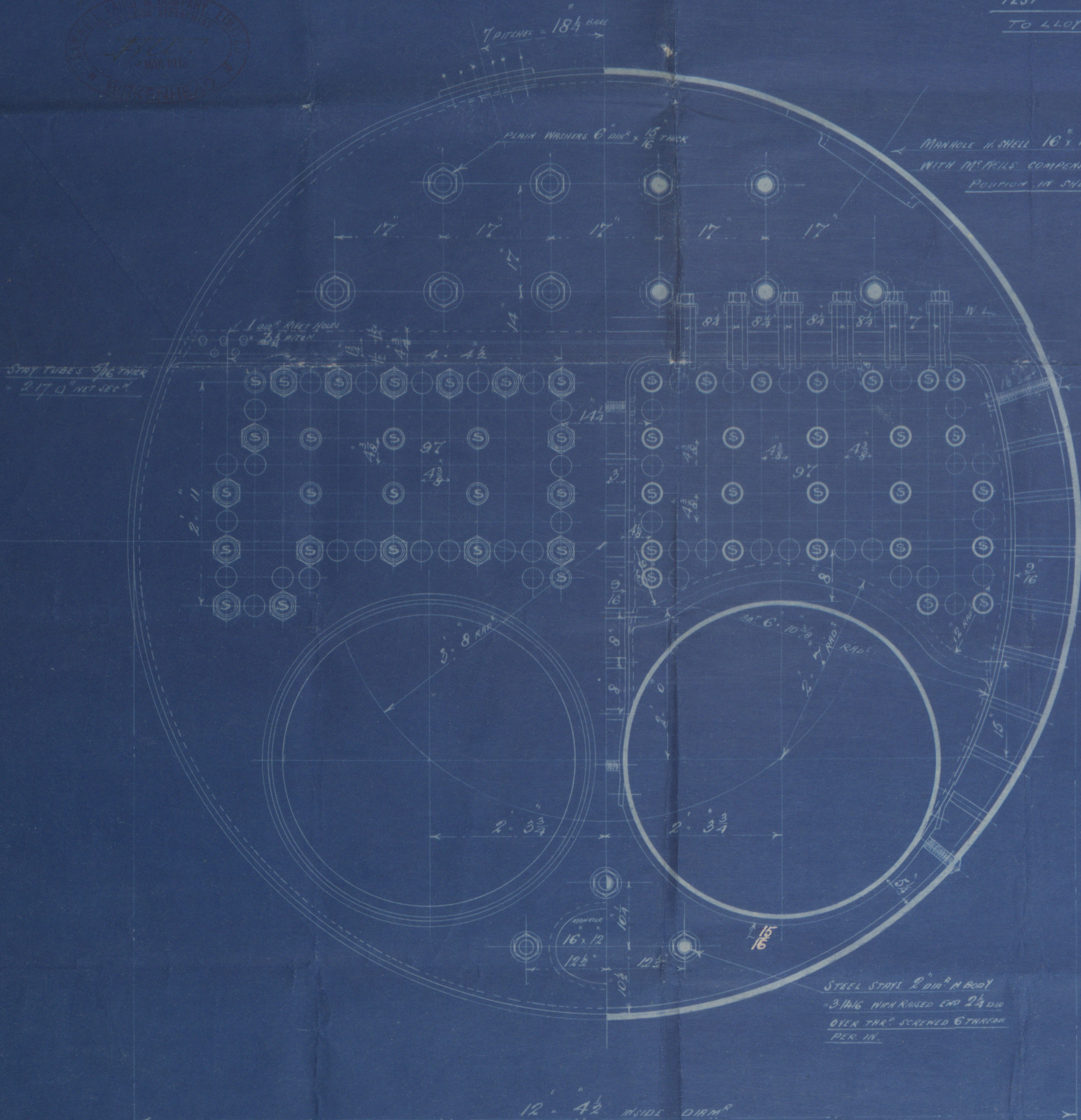
AREA OF FIRE GRATE (5' 8" x 14' 3 1/2" x 8" = 350 sq. ft.)

WORKING PRESSURE 165 LBS. PER SQ. IN.

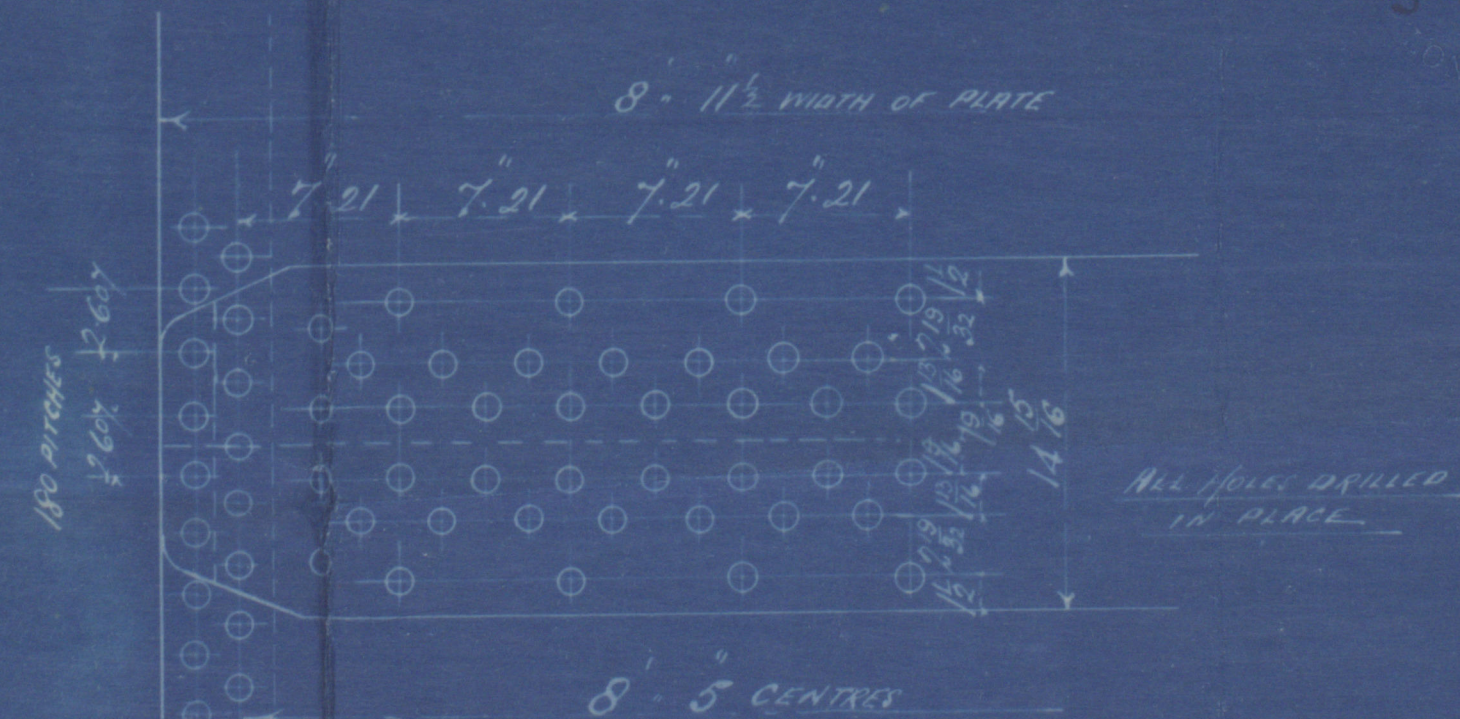
TEST 330

TO LLOYD'S REG.

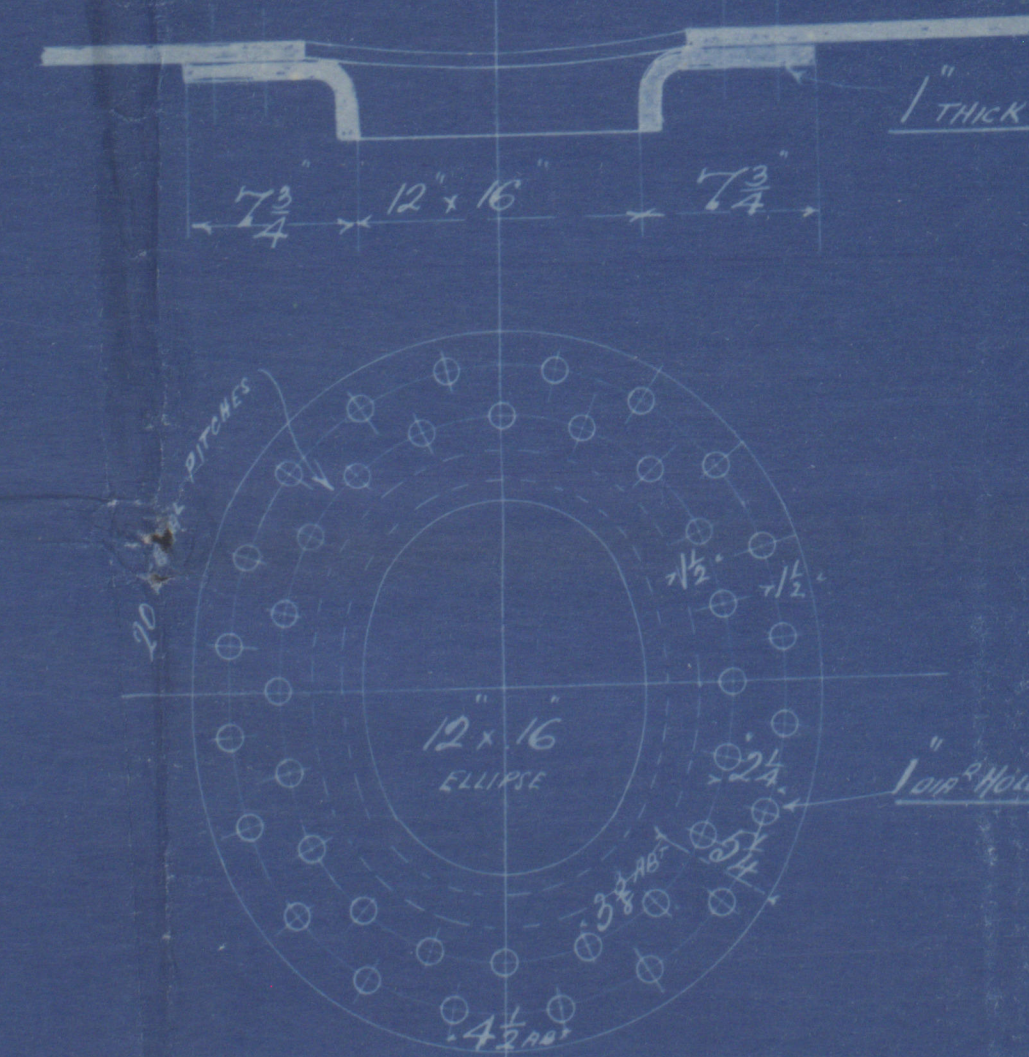
102392



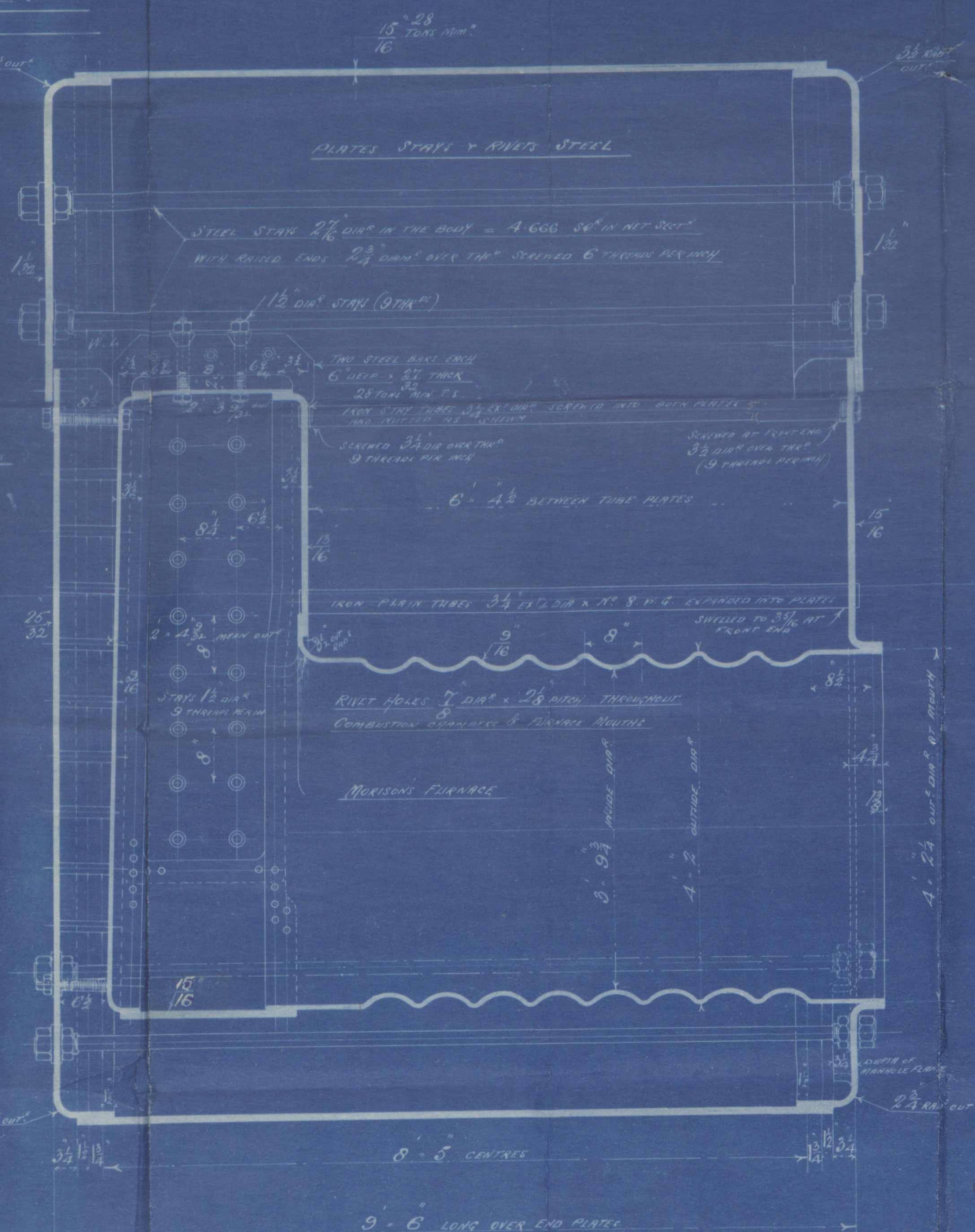
SCALE 1 INCH = ONE FOOT



THICKNESS OF SHELL PLATE 16
DIA. OF RIVET HOLES 16 1/2
THICKNESS OF BUTT JOINTS IN 7/8 OUT 3/32
MIN. TENSILE STRENGTH OF SHELL PLATE & BUTT JOINT 28 TONS
% OF PLATE 86.1 % OF RIVET 86.75 IN LONG JOINT



COMPENSATING RING FOR SHELL MANHOLE
SCALE 1/2" = 1 FOOT



J.D.
4/3/13



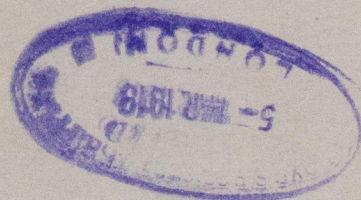
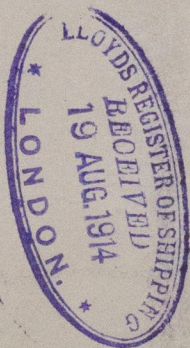
Cummell David

S/S No 797

8. Biles Nos 806.

for National Trans-continental
Railway Co Quebec - Lewis

March 1913



Car Henry

11
Bernard

11
John Robert
17858

W639-0111 1/2



© 2020

Lloyd's Register
Foundation

ENCLOSURE.

FROM
CAMMELL LAIRD & CO. LTD., BIRKENHEAD
TO
MESSRS.

Lloyd's Register
Foundation

W639 - 0111 1/2