

MIDSHIP SECTION

T.S.S. N° 429-30

DIMENSIONS 480'-0" X 58'-0" X 35'-10" WIDE

SCALE 1/2" = 1 FOOT

EQUIPMENT NUMERAL

47701 X 125-06 = 61201-15
ERECTIONS 47701 X 125-06 = 6809-67
67810-82 EQUIP NUMBER



EQUIPMENT

3 BOWERS EACH - - - - - 82 1/2 CWT STOCKLESS

1 STREAM ANCHOR - - - - - 23 1/2 CWT EX STOCK

1 KEDGE ANCHOR - - - - - 12 CWT EX STOCK

300 FATHOMS OF 2 1/8" STUD CHAIN CABLE

120 FATHOMS OF 1 1/8" STREAM CHAIN OR 5 1/2" STEEL WIRE

130 FATHOMS OF 16" HEMP OR 6" WIRE ROPE TOWLINE

4 OF 100 FATHOMS 9" HEMP OR 2 1/2" STEEL WIRE HAWSERS AND WARPS

NUMERALS

HALF BREADTH - - - - - 20-00

DEPTH - - - - - 37-03

HALFGIRTH - - - - - 62-03

123-06

-7

121-06 - 1ST NUMERAL

477-01 X 121-06 = 57855-78 2ND NUMERAL

PROPORTIONS

DEPTHS TO LENGTH 12-9 TO UPPER DECK

DEPTHS TO LENGTH 19-91 TO MAIN DECK

BREADTH TO LENGTH 3-21

FRAMES 7' x 3 1/2" x 15' FORMING 1 1/2" GIRDER BETWEEN AFTER PEAK BULKHEAD 189 FRAME AND 11" GIRDER BETWEEN 189 FRAME AND FOREPEAK 189 (SEE PROFILE)
FRAMES 6 1/2" x 3 1/2" x 15' IN FORE AFTER PEAKS, ALL SPACED 26" APART

FRAMES IN CELLULAR BOTTOM 3 1/2" x 3 1/2" x 15' FOR 1/2 LENGTH TO 1/2 AT ENDS, DOUBLED FROM 1/2 LENGTH FORWARD TO COLLISION BULKHEAD

BULKHEAD FRAMES DOUBLE OF 4 1/2" x 4" x 10' 8" ANGLES

REVERSE FRAMES FROM AFTER PEAK 189 TO 189 FRAME 189 x 4 1/2" x 15' TO 189 x 3 1/2" x 15' FORMING 1 1/2" GIRDER AND 7 1/2" x 3 1/2" x 15' BETWEEN 189 FRAME AND FOREPEAK 189 FORMING 1 1/2" GIRDER

REVERSE FRAMES IN FORE AND AFTER PEAKS 4 1/2" x 4" x 10' 8"

REVERSE FRAMES ALL TO UPPER DECK FORE AND AFT AND TO UPPER

AND FORECASTLE DECKS ALTERNATELY IN WAY OF SAME

REVERSE FRAMES IN CELLULAR BOTTOM 3 1/2" x 3 1/2" x 15' FOR 1/2 LENGTH TO 1/2 AT ENDS

DOUBLED FROM TANK MARGIN TO TANK MARGIN UNDER ENGINES AND BOILERS

FLOORS IN TANK 189 TO 189 EXCEPT UNDER BOILERS WHICH ARE 189 FLOORS IN FORE AND AFTER PEAKS 189

BULKHEADS 189 STIFFENED VERTICALLY BY 7' x 3 1/2" x 15' ANGLES SPACED 30" APART

AND HORIZONTALLY BY BULB ANGLES 9 1/2" x 3 1/2" x 15' SPACED 48" APART

BULKHEADS 49 FEET AND UNDER 55 FEET IN BREADTH TO 3 VERTICAL WEBS, AND BULKHEADS

OVER 55 FEET WIDE ARE TO HAVE 4 VERTICAL WEBS IN LIEU OF BRACKETS TO TANK TOP

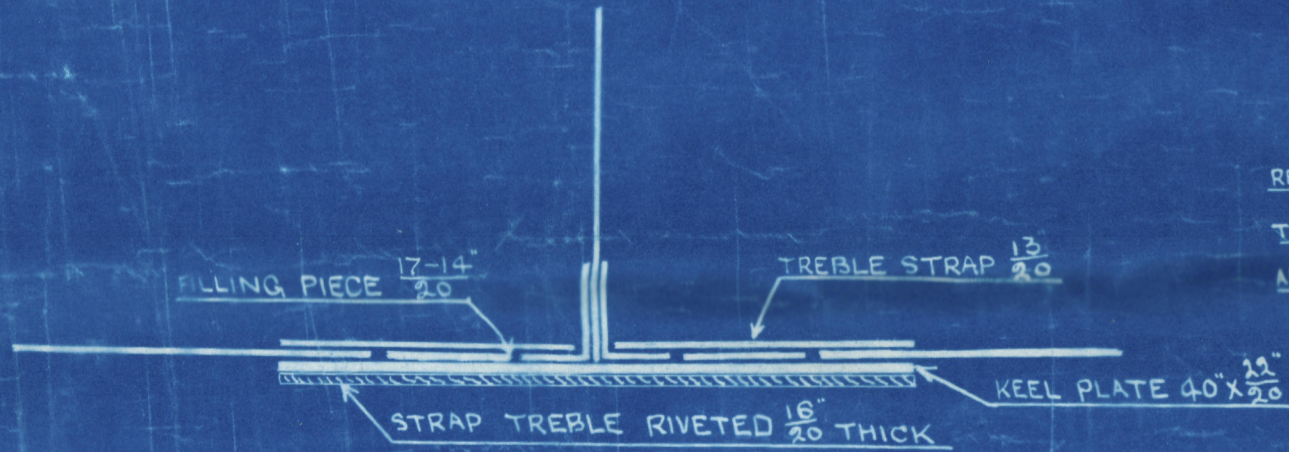
SIMILAR TO OUR N° 423-4, CONNECTION TO TANK TOP OF 4 1/2" x 4" x 10' 8" ANGLES DOUBLE

STEM BAR 12' x 3 1/2" STERNPOST 13' x 3 1/2" RUDDER HEAD 11' DIA HEEL 189 PLATE 189

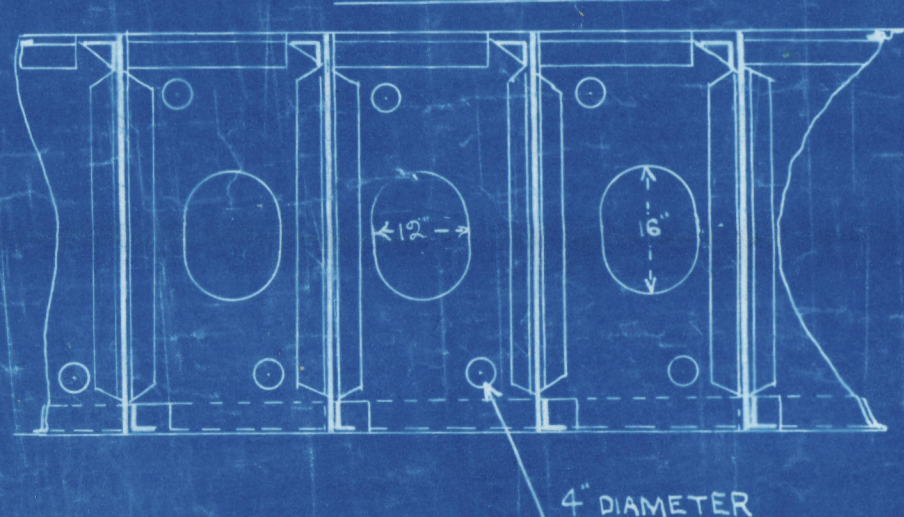
RIVETS OF 189M AND NOT LESS THAN FORMULAE

NOTE FRAMES AND DECK PLATING ALSO REVERSE FRAMES IN TANK TO BE JOGGLED

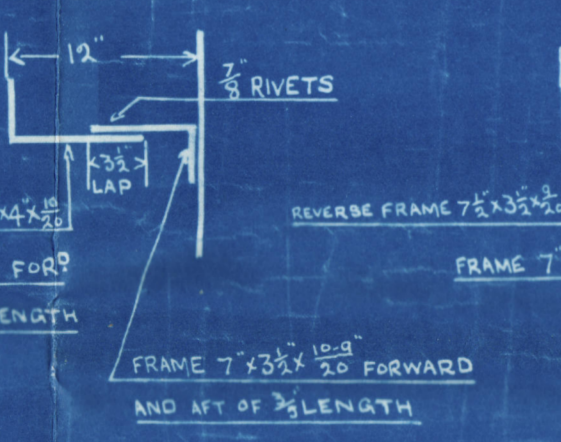
ARRANGEMENT OF FLAT PLATE KEEL BUTTSTRAPS



INTERCOSTAL GIRDER IN TANK SHOWING DRAINAGE AND AIR HOLES

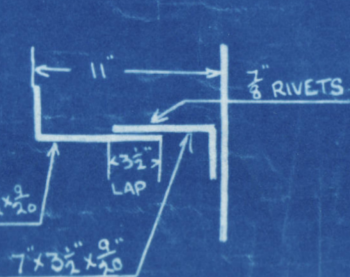


SKETCH OF FRAMING BETWEEN AFTER PEAK 189 AND 189 FRAME



NOTE FLOOR, INTERCOSTAL CENTRE GIRDER, CENTRE GIRDER TOP ANGLES, INTERCOSTAL, VERTICAL, AND TOP ANGLES INCREASED IN TANK IN BOILER SPACE

SKETCH OF FRAMING FOR 189 FRAME TO PEAK 189



BRIDGE DECK

BRIDGE DECK OF STEEL 189 WHERE SHEATHED WITH 3 PINE IN HOUSES 4 1/2" TEAK WHERE EXPOSED
BRIDGE DECK OF STEEL 189 WHERE NOT SHEATHED WITH WOOD (SEE DECK PLANS)
SEAMS SINGLE RIVETED BUTTS DOUBLE OVERLAPPED FOR 1/2 LENGTH REMAINDER SINGLE

BRIDGE DECK BEAMS 8 1/2" x 3 1/2" x 15' CHANNELS ON ALTERNATE FRAMES
HALF BEAMS IN WAY OF HATCHES 5 1/2" x 3 1/2" x 15' CHANNELS ON EVERY FRAME WHERE NO WOOD DECK FITTED
HATCH END BEAMS 10' x 3 1/2" x 15' CHANNELS
FORECASTLE BEAMS 4 1/2" x 3 1/2" x 15' CHANNELS ON ALTERNATE FRAMES
POOP DECK BEAMS 4 1/2" x 3 1/2" x 15' CHANNELS ON ALTERNATE FRAMES

UPPER DECK PLATING 189 FOR 1/2 LENGTH TO 1/2 AT ENDS
BUTTS LAPPED AND DOUBLE RIVETED FOR 1/2 LENGTH
REMAINDER SINGLE SEAMS SINGLE RIVETED

UPPER DECK

UPPER DECK BEAMS OF CHANNEL 10' x 3 1/2" x 15' AND 11' x 3 1/2" x 15' IN WAY OF BRIDGE
SPACED ON ALTERNATE FRAMES
HATCH END BEAMS 10' x 3 1/2" x 15'
HALF BEAMS IN WAY OF HATCHES 7' x 3 1/2" x 15' CHANNELS
FITTED TO EVERY FRAME AND 7' x 3 1/2" x 15' IN WAY OF BRIDGE
PILARS 3" DIA ON EVERY BEAM REELED FOR SHIFTING BOARDS

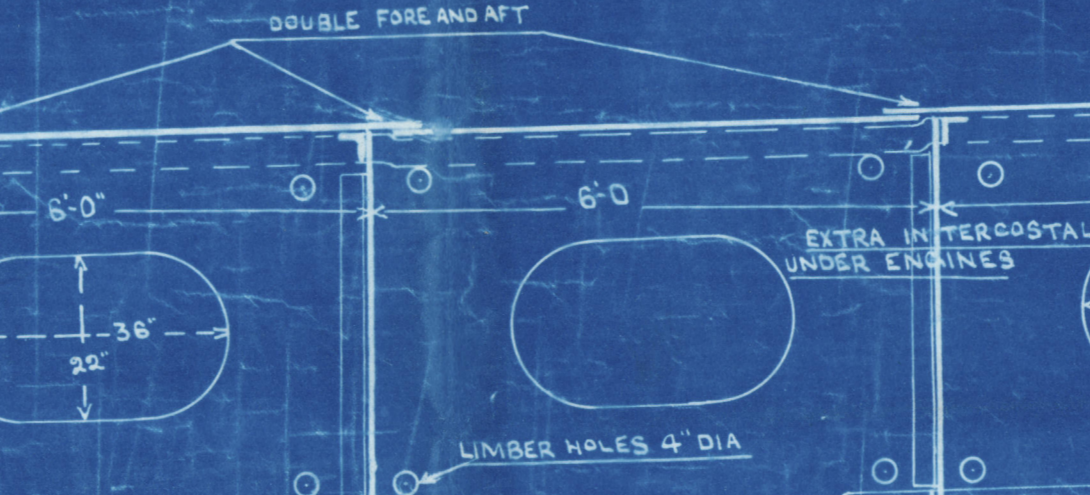
MAIN DECK PLATING STEEL 189 FOR 1/2 LENGTH TO 1/2 AT ENDS
BUTTS OVERLAPPED AND DOUBLE RIVETED FOR 1/2 LENGTH
REMAINDER SINGLE SEAMS SINGLE RIVETED

MAIN DECK

MAIN DECK BEAMS OF CHANNEL 12' x 3 1/2" x 15'
SPACED ON ALTERNATE FRAMES
HALF BEAMS IN WAY OF HATCHES 8' x 3 1/2" x 15' CHANNELS
FITTED ON EVERY FRAME

HOLD PILARS 5" DIA ON EVERY BEAM REELED FOR SHIFTING BOARDS

TANK TOP PLATING 189 IN HOLDS AND 20 IN E AND B SPACE
BUTTS LAPPED AND DOUBLE RIVETED FORE AND AFT
TANK CENTRE STRAKE 36' x 18' BUTTS OVERLAPPED AND DOUBLE RIVETED
SIDE GIRDERS 4 1/2" x 3 1/2" x 15' SIDE GIRDER VERTICAL TOP AND SHELL ANGLES 3 1/2" x 3 1/2" x 15'



FLAT KEEL PLATE 40' x 18' FOR 1/2 LENGTH TO 1/2 AT ENDS
INCREASED 18' (1/2) FOR 1/2 LENGTH IN LIEU OF DOUBLING

SHELL ALREADY REDUCED 1/2 IN WAY OF DOUBLE BOTTOM

BRIDGE STRINGER 40' x 15' 1/2
RODDE STRINGER ANGLE 5 1/2" x 3 1/2" x 15'
FORECASTLE STRINGER ANGLE 3 1/2" x 3 1/2" x 15'
QUITTER ANGLE 3 1/2" x 3 1/2" x 15'

BUTTS QUADRUPLE OVERLAPS FOR 1/2 LENGTH
TREBLE FOR 1/2 LENGTH REMAINDER DOUBLE

QUARTER PILARS FITTED TO EVERY ALTERNATE BEAM 3" DIA WHERE BEAM IS MORE THAN HALF MIDSHIP BEAM
BULKWARK STIFFENERS BULB PLATE 7' x 7 1/2"
UPPER STRINGER 7' x 15' TO 56' x 18'
BUTTS OVERLAPPED AND TREBLE RIVETED ALL FORE AND AFT
STRINGER ANGLE 4 1/2" x 3 1/2" x 15' IN WAY OF ERECTIONS
AND 7' x 5' x 15' IN WELL
189 AT BREAK AND QUADRUPLE BUTTS

NOTE RIVETS IN TOP FLANGES OF CHANNEL BEAMS ARE NOT TO BE SPACED MORE THAN 8 DIA APART EXCEPT WHERE BEAMS ARE FITTED TO EVERY FRAME WHERE SPACING IS 7-9 DIA

QUARTER PILARS FITTED TO EVERY ALTERNATE BEAM 3" DIA WHERE BEAM IS MORE THAN 1/2 MIDSHIP BEAM
SEE PROFILE FOR PILARS IN N° 2 HOLD

KEELSON PLATE 189
FACE ANGLES 6' x 6' x 15'
SHELL ANGLES 3 1/2" x 3 1/2" x 15'

MAIN STRINGER 77' x 15' FOR 1/2 LENGTH 56' x 18' AT ENDS
MAIN STRINGER ANGLE 4 1/2" x 3 1/2" x 15' FOR 1/2 LENGTH TO 1/2 AT ENDS
BUTTS OVERLAPPED AND TREBLE RIVETED

KEELSON PLATE 27' x 15' 1/2
KEELSON ANGLES 7' x 4' x 15' 1/2
FACE ANGLES 7' x 4' x 15' 1/2
SHELL LUGS 3 1/2" x 3 1/2" x 15' 1/2
PLATES AND ANGLES STOPPED AT BULKHEADS
AND CONNECTED BY BRACKETS AND DOUBLE ANGLES

SKETCH SHOWING CONNECTION OF TANK WING COURSE TO TANK TOP

MARGIN PLATE 40' x 15' FOR 1/2 LENGTH 40' x 15' AT FORE END AND 36' x 15' AT AFT END BUTTS OVERLAPPED AND DOUBLE RIVETED
20 SUBSET PLATES CONNECTING TANK MARGIN PLATE TO FLOOR TAILS SEE SKETCH ABOVE FOR RIVETING
SUBSETS FITTED AT INTERVALS OF 2' CLEAR FRAME SPACES AS SHOWN ON TANK TOP PLAN

FLOOR TAIL 2' x 15' PLATED AS TOPSIDE
FLOOR TAIL 2' x 15' PLATED AS TOPSIDE
MARGIN ANGLE 4 1/2" x 3 1/2" x 15'

BRIDGE AND POOP 189 BUTTS QUADRUPLE OVERLAPS FOR 1/2 LENGTH
TREBLE FOR 1/2 LENGTH AND DOUBLE AT ENDS
FORECASTLE 189 BUTTS TREBLE OVERLAPS

DOUBLE FOR 1/2 LENGTH IN WAY OF LONG BRIDGE AND SINGLE AT ENDS

BRIDGE AND POOP 189 FORECASTLE 189 BUTTS OVERLAPPED AND TREBLE RIVETED FOR 1/2 LENGTH

BULKWARKS PLATING 189
DOUBLE FOR 1/2 LENGTH IN WAY OF LONG BRIDGE TO SINGLE AT ENDS

SHEERSTRAKE 46' x 15' 1/2 INCREASED 18' (1/2) FOR 1/2 LENGTH
IN LIEU OF DOUBLING, BUTTS OVERLAPPED AND QUADRUPLE RIVETED FOR 1/2 LENGTH LAPS 18' WIDE REMAINDER TREBLE AT ENDS
DOUBLED AT BRIDGE END AS PER PROFILE

18 TO 13 INCREASED 18' (1/2) FOR 1/2 LENGTH
IN LIEU OF DOUBLING TO SHEERSTRAKE
BUTTS OVERLAPPED AND TREBLE RIVETED

FOUR LANDINGS TREBLE RIVETED FOR ABOUT 100 FEET EACH END

BUTTS OF SHELL

BUTTS OF SHELL EXCEPT WHEN OTHERWISE SPECIFIED TO BE OVERLAPPED AND TREBLE RIVETED ALL FORE AND AFT
WHERE OUTSIDE STRAKES EXCEED 46" IN BREADTH AND INSIDE STRAKES 54" BUTTS TO BE QUADRUPLE RIVETED OVERLAPS AND THE RIVETS SPACED 4 DIA PITCH
EXCEPT IN WAY OF INNER BOTTOM HOLD BALLAST TANK AND FORE AND AFT PEAK TANKS WHERE RIVETS ARE 3 1/2" DIA PITCH
RIVETS IN BUTTS AND EDGES OF SHELL INSIDE DOUBLE BOTTOM AND OF INNER BOTTOM PLATING ALSO IN BUTTS AND EDGES OF SHELL IN WAY OF AFT PEAK, FORE PEAK, AND HOLD BALLAST TANKS TO BE SPACED 35 DIA PITCH TWO RIVETS THRU TANK REVERSE BAR AND INNER BOTTOM PLATING AT LANDINGS

RIVETS THRU TANK REVERSE BARS AND INNER BOTTOM PLATING THRU FRAMES AND SHELL IN WAY OF AFT PEAK, FORE PEAK, AND HOLD BALLAST TANKS ALSO THRU FRAMES AND SHELL IN WAY OF DOUBLE BOTTOM FROM AFT END TO DOUBLE BOTTOM TO 1/2 LENGTH FORWARD TO BE SPACED 6 DIA PITCH RIVETS THRU FRAMES AND SHELL IN WAY OF DOUBLE BOTTOM FOR 1/2 LENGTH TO BE 5 1/2" DIAMETERS APART

BULB KEEL BULB PLATE 11' x 18' AND TIE BAR 6' x 6' x 15'

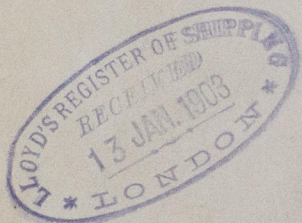
W6310-0141

S.S. "Mingchong"

Midship Section
as built

Gk. rpt. No. 20306
" "

No. 430 - Canfa
Gk. rpt. No. 20487
" "



RETAIN



© 2020

Lloyd's Register
Foundation

W636-0141