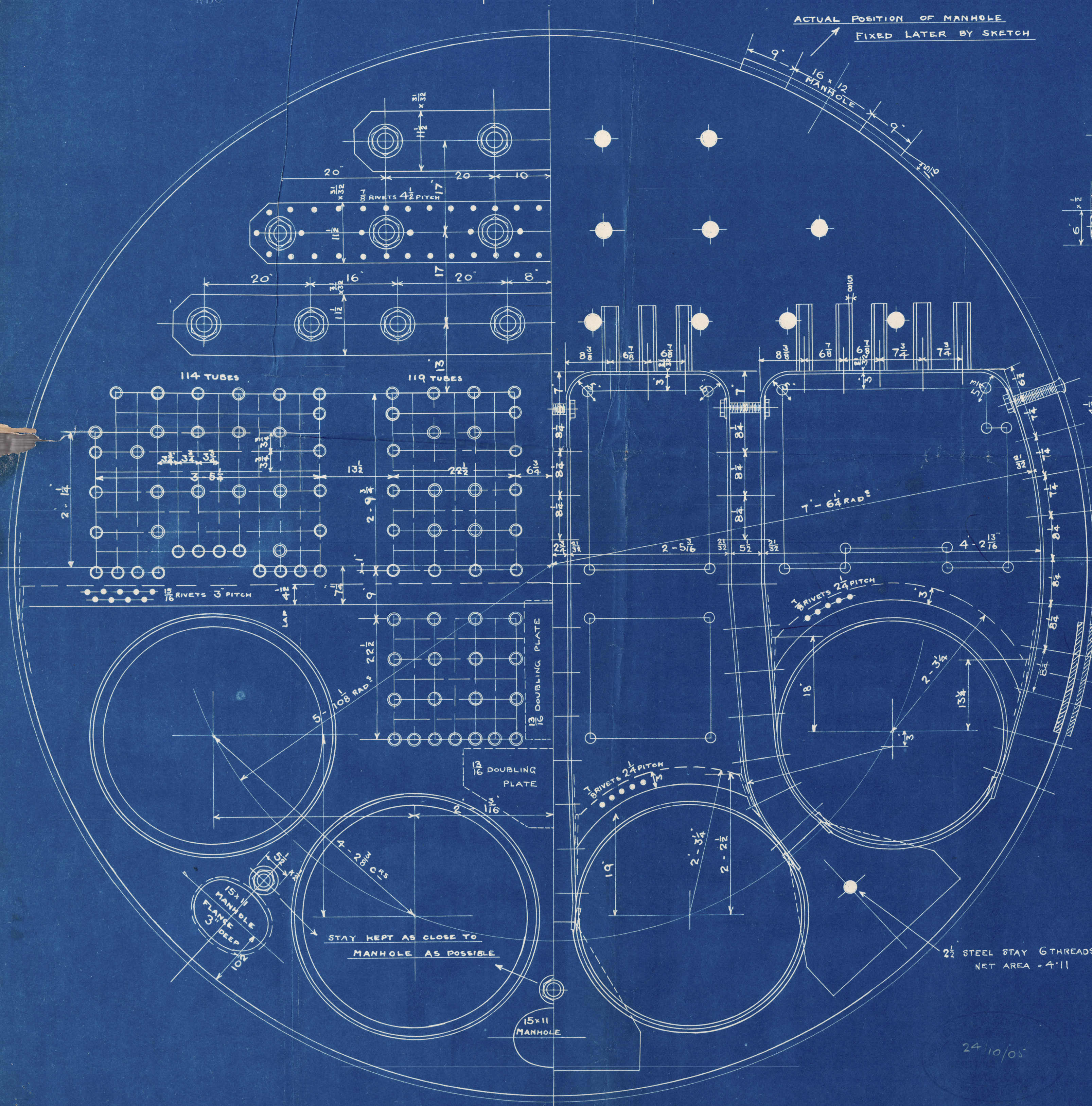



D<sup>o</sup> OF LONG<sup>TL</sup> STIL STAYS 27-32 " "

TEST	D°	320	D°	D°
------	----	-----	----	----

ALL PLATES OF STEEL
• RIVETS • "
• TUBES OF IRON



ACTUAL POSITION OF MANHOLE  

 A hand-drawn diagram on a grid background. It shows a dashed line with an arrow pointing from the text 'ACTUAL POSITION OF MANHOLE' to a point. Another dashed line with an arrow points from the text 'FIXED LATER BY SKETCH' to the same point.

FIXED LATER BY SKETCH

<u>CLEARANCE SPACE FILLED IN WITH</u>	<u>STAYS SCREWED INTO FRONT PLATE</u>
<u>STEEL LINER WELL STEMMED &amp; CAULKED</u>	<u>TO BE CAULKED &amp; CRUMMED</u>
<u>CEMENT JOINT BETWEEN WASHER &amp; PLATE</u>	

LONGITUDINAL STEEL STAYS 3" DIA.<sup>R</sup>  
6 THREADS NET AREA = 6.1<sup>d</sup>

IRON STAYS 9 THREADS  
NET AREA 2.03<sup>2</sup>

LENGTH OF TUBE OVERALL =									
PLAIN TUBES 22" O.D. X 8 I.W.G. SWELLED $\frac{1}{16}$ " AT FRONT END									
STAY D <sup>o</sup> 22" O.D. X THICK D <sup>o</sup> $\frac{1}{4}$ D <sup>o</sup> D <sup>o</sup> 8 SCREWS									
WITH CONTINUOUS THREAD 11 PER INCH NET AREA =									

7' - 10 $\frac{1}{2}$ " BETWEEN TUBE PLATES

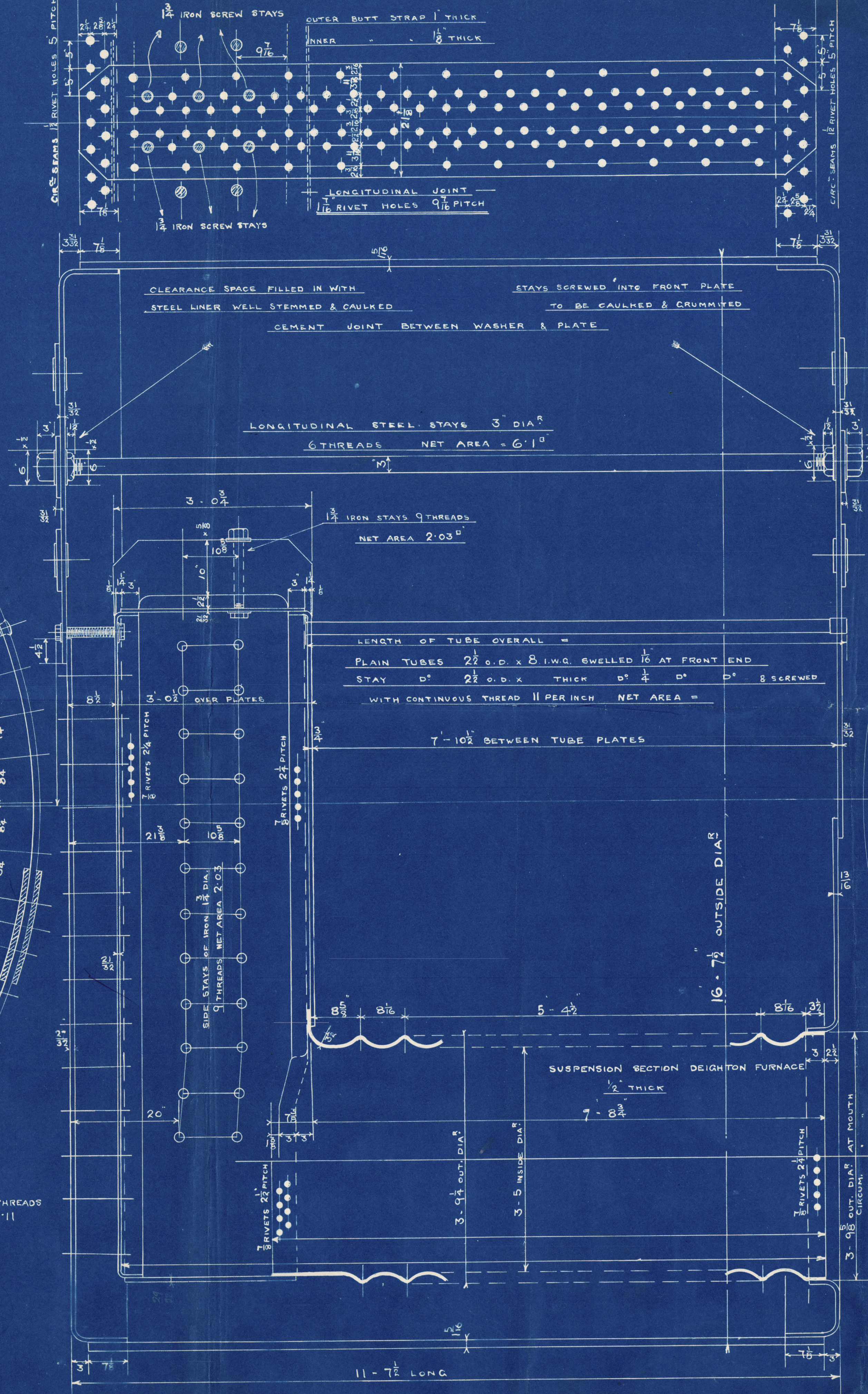
6.72<sup>1</sup> OUTSIDE DIA<sup>R</sup>

SUSPENSION SECTION DEIGHTON FURNAC

$\frac{1}{2}$  THICK

9 - 8  $\frac{3}{4}$

11 - 7 $\frac{1}{2}$  LONG



BACK STAYS MARKED THUS	7 DIA. (IRON)	9 THREADS	NET AREA	2.36
D <sup>2</sup> REMAINDER	14 " (1)	9 "	"	2.03

2 SCREW STAYS NET ARE 2.71

SCREW STAYS

2 SCREW STAYS  
NET AREA..  
2.71 sq

28 M.  
26/10/05.  
2 THU

MAIN BOILERS N° 754

SCALE 1" = 1 FOOT.



For enclosure to

Date

© 2020 24/10/05

Lloyd

Lloyd's Register  
Foundation

Please return to **SWAN, HUNTER, & WIGHAM RICHARDSON, LTD.,**  
**Neptune Works, WALKER.**

W 636 - 0053 1/2



Newcastle on Tyne  
Swan Hunter & W Richardson

S-S No 754

Main Boiler  
Lvin S.S. "EMPRESS"  
Proc Rep<sup>d</sup> No 50.846

Mark on Boiler.

No - 4193.

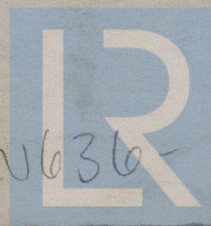
Lloyds List.

320 Ws.

H.G.D. 20/3/06.



RETAIN



© 2020

W636-01053 Lloyd's Register  
Foundation