

JOHN READHEAD & SONS,
Engineers, Boiler Makers,
Iron & Steel Ship Builders,
SOUTH SHIELDS.

MIDSHIP SECTION

N^o 371

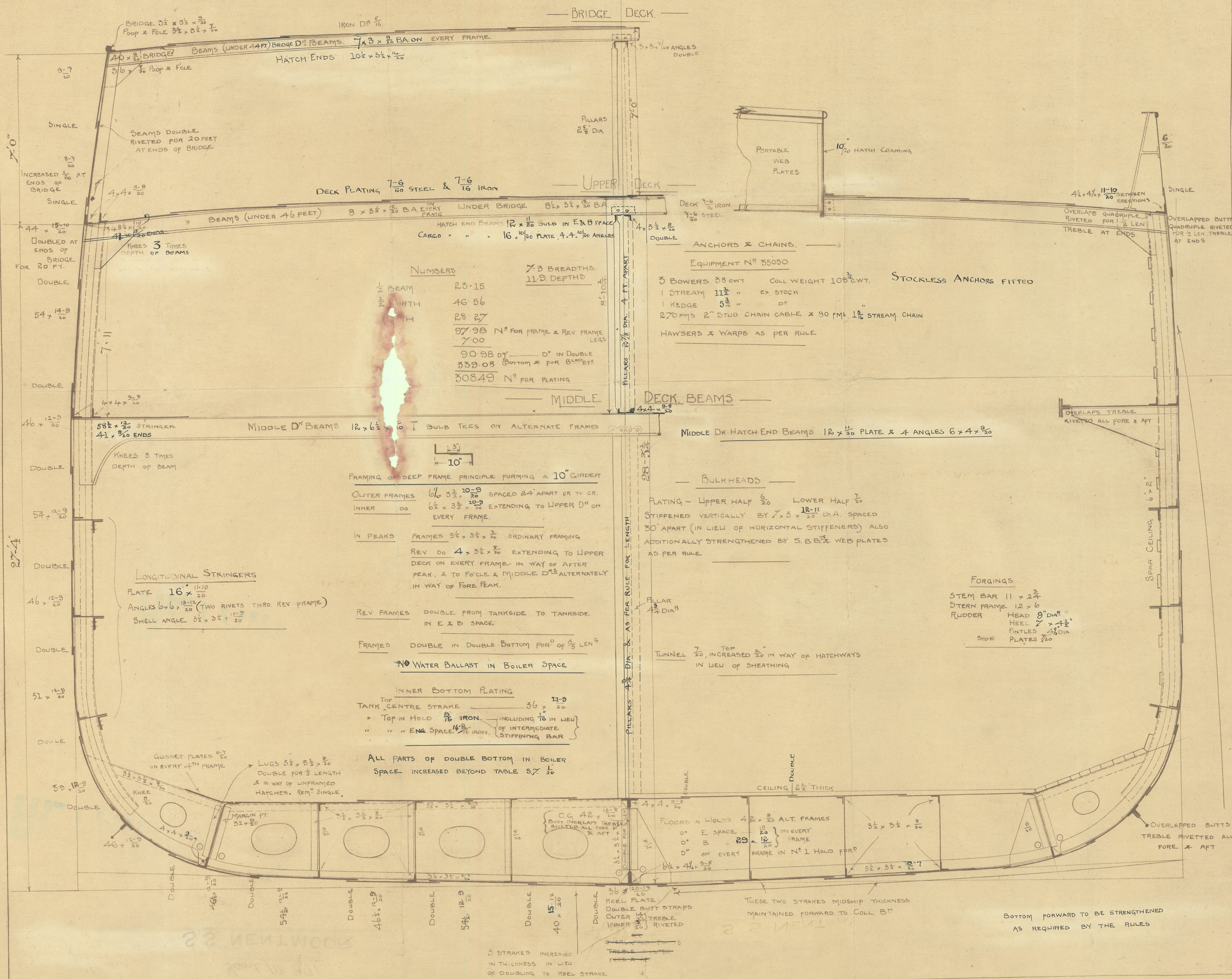
S. S. "NENTMOOR"

DIMENSIONS AS PER RULES

LENGTH 339.08
BREADTH 46.30
DEPTH 28.27

CLASS 100, A.1. 30th RULE

JOHN READHEAD & SONS,
Engineers, Boiler Makers,
Iron & Steel Ship Builders,
SOUTH SHIELDS.



Newcastle on-Tyne

Midship Section of

Messrs J. Readhead & Sons

Yard No 371

S.S. "NENTMOOR"

Newcastle Report

No 45818

sister vessel

"Captow" No. 46349

RETAIN

RETAIN



© 2020

Lloyd's Register
Foundation

W635-0221