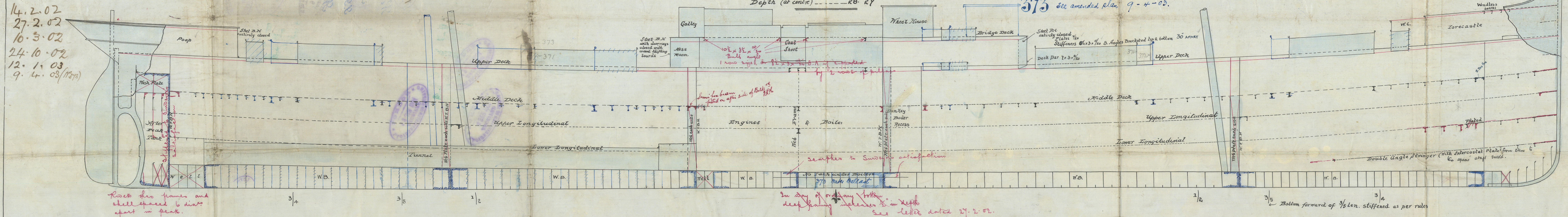


<u>Dimensions as per Rule</u>	
Length	339.08
Breadth (moulded)	46.30
Depth (at centre)	28.27

~~370~~. 371 also 373 (appx 9.4.03)

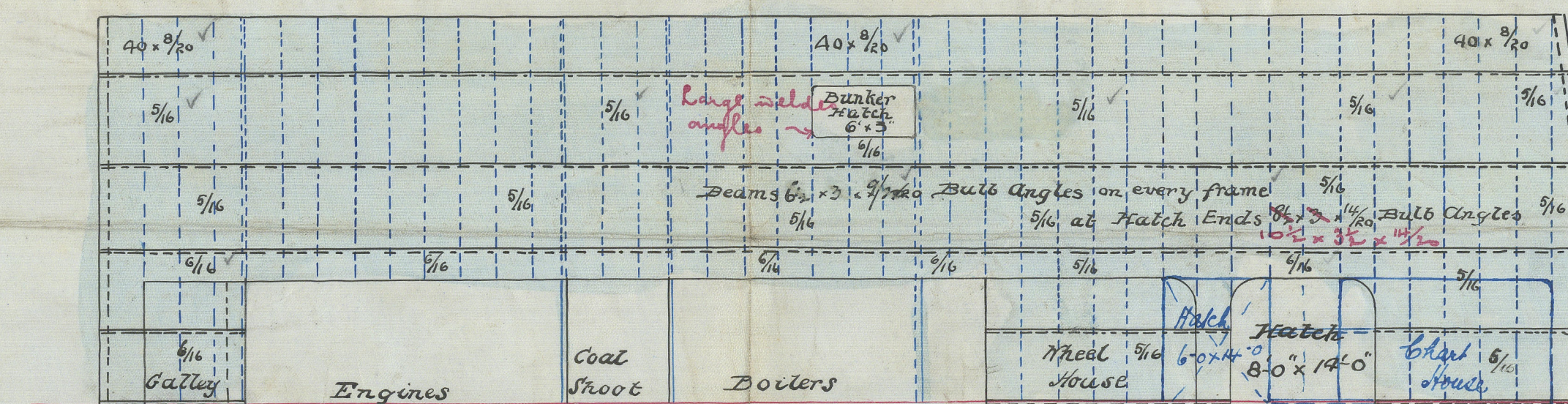
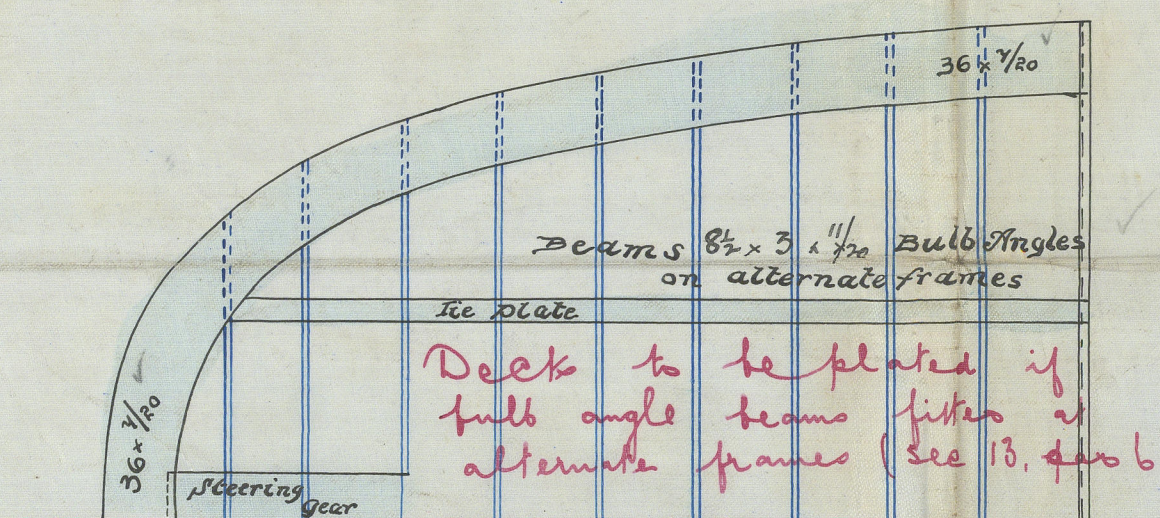
373 See amended plan 9-4-03.



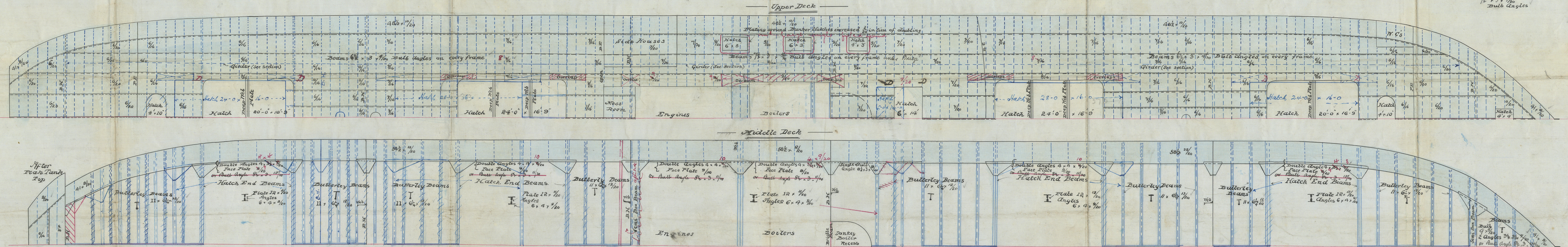
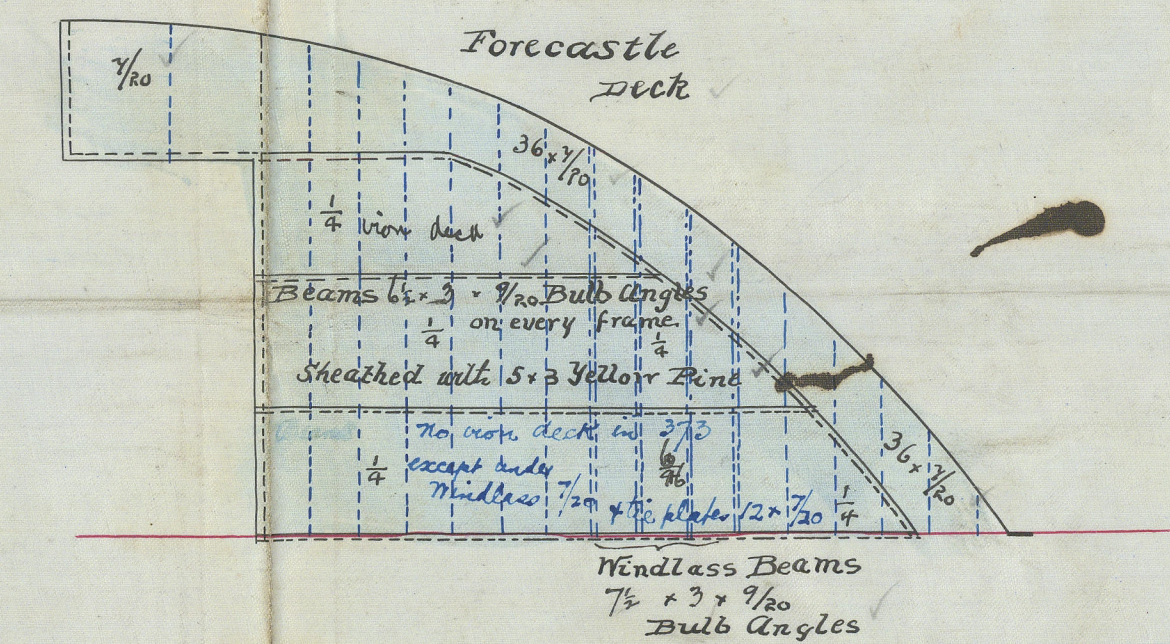
Ribs thro frames and
shell spaced 6 diam
apart in peak.

~~In way of ordinary bottom~~
~~deepening increases 2" in depth~~
See letter dated 27.2.02.

—PARTICULARS FOR FREE BOARD



LENGTH BETWEEN PARTICULARS 341'-0"
 BREADTH EXTREME 46'-6"
 DEPTH MOULD TO UPPER DECK AT MIDDLE OF LENGTH 27'-4"
 " OF HOLD CELLULAR D.B. TO UPPER DECK 16'-0"
 TONNAGE UNDER DECK 3345 TONS
 COEFFICIENT OF FINENESS85
 LENGTH OF BRIDGE 88'-0" AT SIDE 88'-0" AT CENTRE }
 " OF HOLD 38'-0" 38'-0" } T 0 HIGHER
 " FORECASTLE 40'-0" 32'-0"
 SCANTLING CLASS 100 A1. SPECIAL SURVEY 3 DECK RULE
 BOUND OF DECK
 SHEER AFTER SIDE OF STEERN POST 4'-6". FORESIDE STEER 8'-0". AT $\frac{1}{2}$ LEN AFF = 2'-6". AT $\frac{1}{2}$ LEN PARD = 4'-6".
 UPPER DECK OF NOT T COVERED WITH WOOD



J.V.
14/2/02
27/2/02

371
~~370~~

John Readhead & Co
N^o ~~366~~ ~~369~~

Profile Plans
2 D. Rule

also N^o 373

N^o 371 "NENT MOOR"

Newcastle Report
N^o 4588

J. S. TAPTON

Newcastle Report
N^o 46349



© 2020

Lloyd's Register
Foundation

W635-600