

# Awning or Shelter Deck, or Pt. Awning Deck.

# STEEL STEAMER.

2444  
MON 14 APR 1919

State if Report is also sent on the Machinery of the Vessel *yes*

Port of *Kobe* Date of completion of Report *8 March 1919* Received at London Office *yes*

Survey held at *Kobe* Date of First Survey *18 October 1918* Last Survey *1st July 1919*

On the *Steel Single Screw Steamer Tokufuku Maru* Rig *2 masts*

CLASS *+100 A1 Shelter Dk* Master *U. Seno*

TONNAGE under Tonnage Deck...  
Do. between Tonnage Dk. and 3rd, 4th, or Awning Dk. ...  
Total under Upper Dk. *5585.80* Depth, at middle of length from top of keel to top of beams at side of uppermost Continuous Deck ... *36.00*

Do. of Poop ...  
Do. of R. Qr. Dk. ...  
Do. of Bridge House ...  
Do. of Forecastle ...  
Do. of Houses on Deck ...  
Process of Hatchways ...  
Crown of Room ...  
Tonnage ...  
Space ...  
Crown of Room ...  
FOR FEES...  
Main Room ...  
Cabin Spaces ...  
Tonnage ...  
Beam ...

Breadth (greatest moulded) ... *51.00*  
Depth, at middle of length from top of keel to top of beams at side of uppermost Continuous Deck ... *36.00*  
Deduct height of tween deck when this does not exceed 8ft. ... *28.00*  
Transverse Number ... *79.00*  
Length on deck from fore part of stem to after part of sternpost ... *385.00*  
Longitudinal Number ... *30415*  
Depth "d" at middle of length. See Secs. 2 & 13 ... *16.00*  
Proportions, Depths to Length, Uppermost Continuous Deck at side to top of keel ... *10.7*  
" " " Upper Deck at side to top of keel ... *13.7*

Built at *Kobe*  
When built *1919* Launched *15 Jan'y 1919*  
By whom built *Kawasaki Dry Dock Co. Ltd.*  
Owners *do*  
Managers ...  
(Where necessary to be entered in Reg. Book.)  
Residence *Kobe*  
Port belonging to *Kobe*

Destined Voyage ... If Surveyed while Building, Afloat, or in Dry Dock *Building*

DEPTH on Rule	Ft.	Ins.	BREADTH Moulded	Ft.	Ins.	DEPTH, ACTUAL	Ft.	Ins.	No. of Decks with flat laid	No. of Tiers of Beams
385	0		51	0		36.0	0		3	3
Length	385.0		breadth	51.0		depth	36.0			
						Upper Deck	28.0			
						Moulded depth, ft.	36			
						ins.	0			
						To Awning or Shelter Dk.				
						Round up of Uppermost Dk. Beam, Actual				
						ins.				

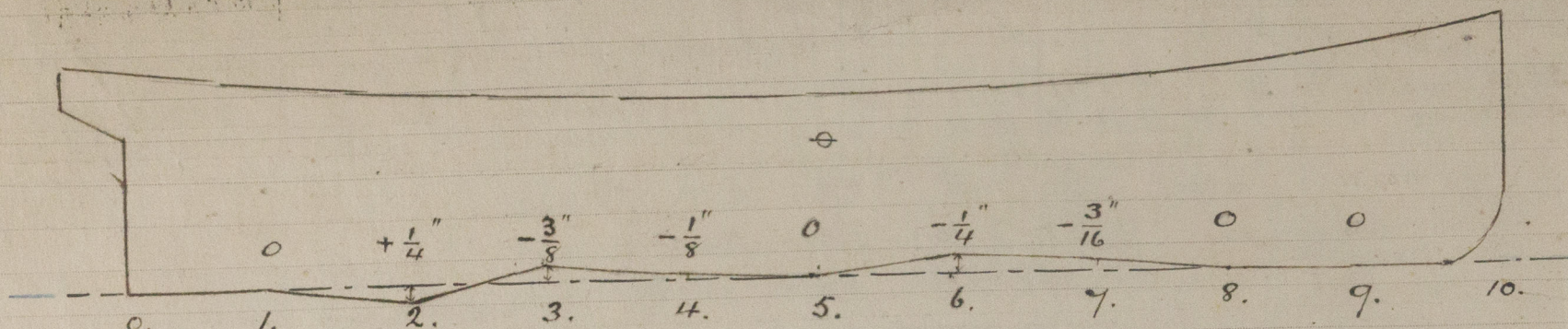
FRAMING.				PILLARS.			
Inches in Ship	Inches in Ship	Inches in Ship	Inches in Ship	Inches in Ship	Inches in Ship	Inches in Ship	Inches in Ship
Angles, Bars, amidships ...	9 3 1/2	32	9 3 1/2	32	27/8 @ 51"	32	32
Peaks ...	6 3 1/2	36	6 3 1/2	36	27/8 @ 51"	32	32
Way of Double Bottoms at Solid Floors ...	3 1/2	40	3 1/2	40	27/8 @ 51"	32	32
" " L at intermdt. Bkts.	4 1/2	40	4 1/2	40	27/8 @ 51"	32	32
Frames from centre to centre amidships ...	25 1/2		25 1/2		27/8 @ 51"	32	32
Length to collision bulkhead ...	24		24		27/8 @ 51"	32	32
Frames from centre to centre in peaks ...	24		24		27/8 @ 51"	32	32
SED FRAME, Angles ...	3 1/2	36	3 1/2	36	27/8 @ 51"	32	32
Way of Double bottoms at Solid Floors ...	3 1/2	40	3 1/2	40	27/8 @ 51"	32	32
" " L at intermdt. Bkts.	8 1/2	40	8 1/2	40	27/8 @ 51"	32	32
NG, depth of girder ...	6		6		27/8 @ 51"	32	32
S, depth and thickness of Floor Plate at mid-line for 1/2 length amidships ...					27/8 @ 51"	32	32
n way of Engine and Boiler spaces ...					27/8 @ 51"	32	32
Thickness at the ends of vessel ...					27/8 @ 51"	32	32
Depth at 1/2 the half-bdth. as per Rule ...					27/8 @ 51"	32	32
Height extended at the Bilges ...					27/8 @ 51"	32	32
S, in Cell Double Bottoms ...	40-36		40-36		27/8 @ 51"	32	32
state if flanged (top and bottom) ...	No		No		27/8 @ 51"	32	32
spacing of Solid ...	24 in Pks		24 in Pks		27/8 @ 51"	32	32
GIRDER, in Dbl bottom, dpth & thcknss ...	42 3/4	40	42 3/4	40	27/8 @ 51"	32	32
" Angles, Top ...	3 1/2	50	3 1/2	50	27/8 @ 51"	32	32
" Bottom ...	5 1/2	58	5 1/2	60	27/8 @ 51"	32	32
" to Floors ...	5 1/2	56	5 1/2	56	27/8 @ 51"	32	32
Brackets at intermdt. frmg., wdth & thcknss ...	36 1/4	36	36 1/4	36	27/8 @ 51"	32	32
RDERS, number and thickness ...	Two 38	36	Two 38	36	27/8 @ 51"	32	32
" state if flanged (top & bottom) ...	Top 3 1/2		Top 3 1/2		27/8 @ 51"	32	32
Angles ...	3 1/2	40	3 1/2	40	27/8 @ 51"	32	32
PLATE, depth (exclusive of flange) and thickness ...	38-32	46	38-32	46	27/8 @ 51"	32	32
Angles to outside plating ...	3 1/2	46	3 1/2	46	27/8 @ 51"	32	32
" to floors ...	3 1/2	40	3 1/2	40	27/8 @ 51"	32	32
Brackets at intermdt. frmg., wdth & thcknss ...	30 1/4	36	30 1/4	36	27/8 @ 51"	32	32
Height of Brackets above at bilge ...	24		24		27/8 @ 51"	32	32
BOTTOM PLATING, breadth and thickness of Middle Line Strake ...	42 3/4	40	42 3/4	40	27/8 @ 51"	32	32
" thickness in Engine and Boiler space ...	48 1/8	36	48 1/8	36	27/8 @ 51"	32	32
" Remainder in Holds ...	40-34		40-34		27/8 @ 51"	32	32
Awng or Shltr Dk, Single Angle, Bulb Angle, Plate, Tee Bulb or Channel ...	8 3 1/2	40	7 3	42	27/8 @ 51"	32	32
Upper Deck, Single Angle, Bulb Angle, Plate, Tee Bulb or Channel ...	9 3 1/2	48	9 1/2	36	27/8 @ 51"	32	32
Second, Third & Fourth Deck, Single Angle, Bulb Angle, Plate, Tee Bulb or Channel ...	10 3 1/2	57	11 3 1/2	56	27/8 @ 51"	32	32
Angles on upper edge ...	51		51		27/8 @ 51"	32	32
Spacing ...	51		51		27/8 @ 51"	32	32
BEAMS, Poop Deck, Angle, Bulb Angle, Plate, Tee Bulb or Channel ...					27/8 @ 51"	32	32
" Angles on upper edge ...					27/8 @ 51"	32	32
Spacing ...					27/8 @ 51"	32	32
BEAMS, Bridge Deck, Angle, Bulb Angle, Plate, Tee Bulb or Channel ...					27/8 @ 51"	32	32
" Angles on upper edge ...					27/8 @ 51"	32	32
Spacing ...					27/8 @ 51"	32	32
BEAMS, Forecastle Deck, Angle, Bulb Angle, Plate, Tee Bulb or Channel ...					27/8 @ 51"	32	32
" Angles on upper edge ...					27/8 @ 51"	32	32
Spacing ...					27/8 @ 51"	32	32







Diagram of line of Keel as sighted before launching.



**PARTICULARS FOR RECORD in the REGISTER BOOK.**—Length of Poop      ft., R.Q.D.      ft., Bridge      ft., Forecastle      ft.  
(in feet and tenths). When the Poop is joined to the B.D., this should be distinctly stated

No. and Material of Decks (if Iron or Steel) and whether wholly or partially covered with wood, and No. of tiers of Beams (this information is to be given as it should appear in the Register Book) 2 Dks (Stl) + Shelter Dk (Stl)  
Official No. 24088 ; Signal Letters R G T S. State if Machinery is fitted aft No.  
How are the surfaces preserved from oxidation? Inside Cement + Paint Outside Paint.

**PARTICULARS OF WATER BALLAST.**—State whether the Double bottom is constructed on the cellular system or with girders on floors

Where Fitted.	*Length. Feet.	Water Capacity. Tons.	Where Fitted.	*Length. Feet.	Water Capacity. Tons.
Double bottom, aft,	116.9	342	Fore peak tank,		126.0
Double bottom, under Engines and Boilers,	44.6	182	After peak tank,		98.0
Double bottom, if under Engines only,			Deep tank, aft,		
Double bottom, if under Boilers only,			Deep tank, forward,		
Double bottom, forward,	172.1	594	Other tanks, if fitted,		
	Total capacity of double bottom	1118	(If necessary, furnish further information by sketch.)		

\* The wells are not to be included in the lengths of the tanks.

State whether the above have been tested as required by the Rules. Yes

Order for Special Survey No.

Date

No. 433 in builder's yard.

DATES of Surveys held while building

18. 21. 23 Oct. 1. 3. 13. 25 Nov. 6. 12. 14. 16. 19. 23. 24. 27. 28 Dec. 1918  
8. 9. 10. 13. 14. 15. 20. 22. 27. 28. Jan'y. 1<sup>st</sup> Feb'y 1919.

Surveyor's Signature

Arthur L. Jones

© 2020  
Total No. of Visits 27

Lloyd's Register  
Foundation