

No. 1 MILL.

MILL SHEET.

L 451

THE PARK GATE IRON AND STEEL COMPANY LIMITED.

To *Tanner & Co. Ltd.* ROTHERHAM.

Date *10/1/19*

Order No. *8243*

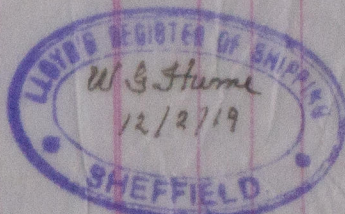
SIEMEN'S-MARTIN STEEL.

Plate Nos.	Cast No.	No. of Pieces	Length	Breadth	Thickness	Marks on Plate	WEIGHT			
							T.	c.	q.	lb.

<i>1208</i>	<i>5008</i>	<i>2</i>	<i>11.62</i>	<i>7.4</i>	<i>9/16</i>		<i>1</i>	<i>16</i>	<i>0</i>	<i>20</i>
<i>1243</i>	<i>-</i>	<i>2</i>	<i>-</i>	<i>-</i>	<i>9/16</i>		<i>1</i>	<i>5</i>	<i>0</i>	<i>2</i>
<i>88</i>	<i>-</i>	<i>32</i>	<i>1.9</i>	<i>9</i>	<i>9/16</i>		<i>8</i>	<i>1</i>	<i>6</i>	
<i>87</i>	<i>5009</i>	<i>2</i>	<i>5.5</i>	<i>7</i>	<i>9/8</i>		<i>1</i>	<i>1</i>	<i>20</i>	

*38*

*14.0.3.20*



We hereby certify that the material described above has been made by the Open Hearth Process, and is that which has been satisfactorily tested in the presence of the Surveyor, in accordance with the rules of Lloyd's Register.

THE PARK GATE IRON AND STEEL CO. LTD.

*J. Brown* Test Manager.



© 2020

Lloyd's Register Foundation