

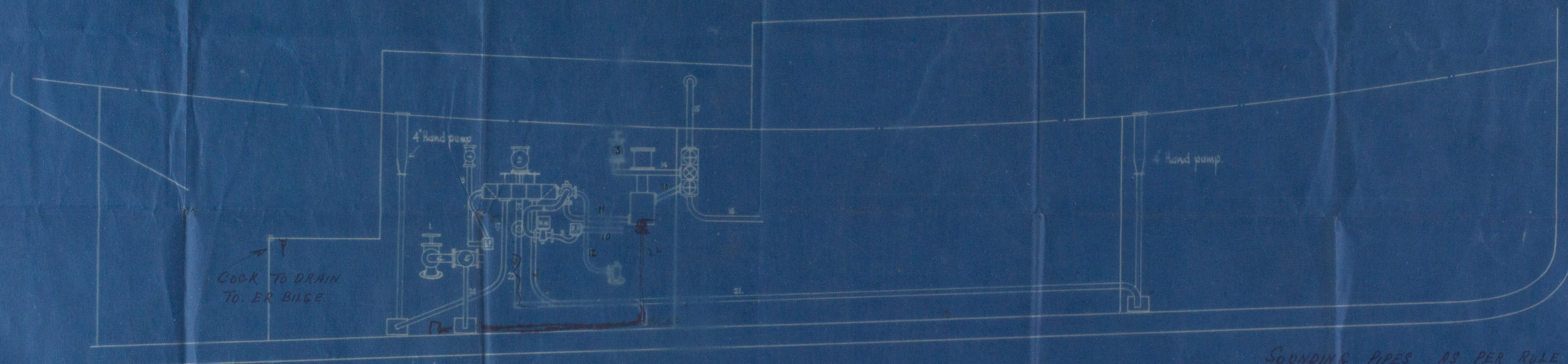
30.8.19.

# COMPOSITE SCREW TUGS. PUMPING & PIPING ARRANGEMENT. SCALE $\frac{3}{8}$ " = 1 FOOT.

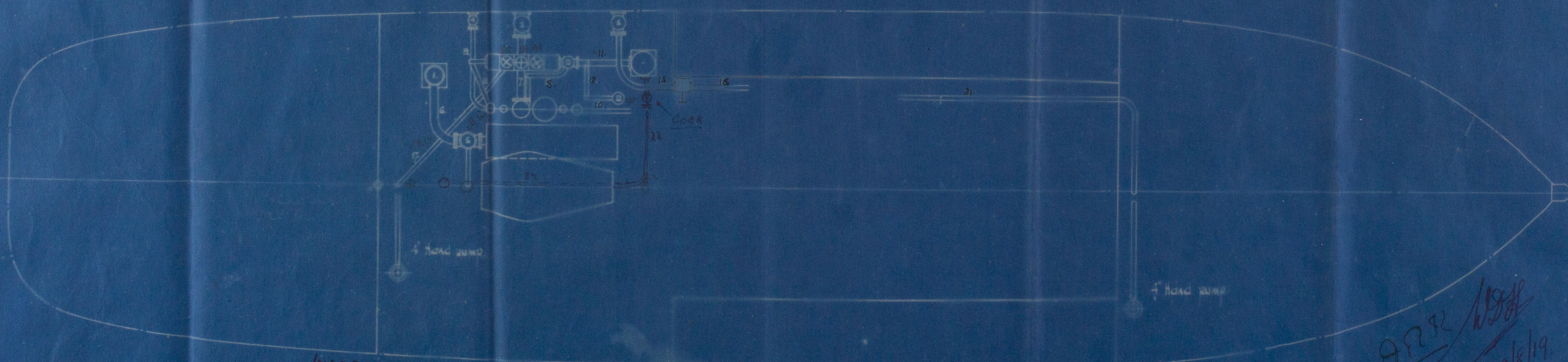
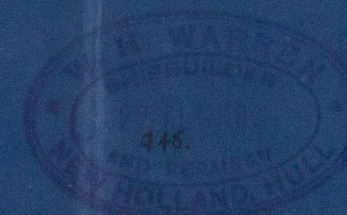
Description.	Bore.	Material.
1. Main Injection Valve	3"	"
2. Fire pump discharge overboard	3"	"
3. Donkey discharge overboard	2"	"
4. Bilge	2"	"
5. Bilge Injection to Condenser.	"	"
6. Fire pump suction from sea	3"	Copper
7. " " discharge overboard	3"	"
8. Halwell to Switch Cdrk	2"	"
9. Feed pump suction from Halwell.	2"	"
10. " " discharge to boiler	1 1/2"	"
11. Donkey pump suction from switchhead	2"	"
12. Donkey suction from sea.	2"	"
13. Donkey pump discharge to chest.	2"	Galv Iron
14. Donkey " " overboard.	2"	"
15. " " " to deck	1 1/2"	"
16. " " " boiler.	1 1/2"	Copper
17. " " suction from E.R.	2"	Lead or G.I.
18. Bilge pump suction from bilge chest	2"	"
19. " " discharge overboard	2"	Copper
20. Bilge Injection.	2"	Lead or G.I.
21. Donkey pump suction from hold	2"	Lead
22. Independent donkey suction from bilge	2"	"
Security valve blows off	"	Copper
Steam to Whistle	1"	"

MAIN BILGE PUMP &

MAIN BILGE PUMP &



SOUNDING PIPES AS PER RULE  
DUBLIN. PLATES UNDER ALL SOUNDING PIPES



INDEPENDENT DONKEY SUCTION  
to be capable of drawing from E.R. BILGE  
at the same time as the MAIN BILGE PUMP  
is drawing from any compartment

APR 1919  
29/8/19





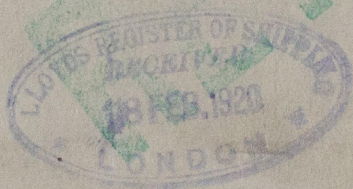
Wood Legs

No. 172 + 173

Building at J. Hunter & Sons  
Beverley

Plan of  
Pumping Arrangement

s/s Cairns Hull Rpt No. 31635



© 2020

Lloyd's Register  
Foundation

W632-0171