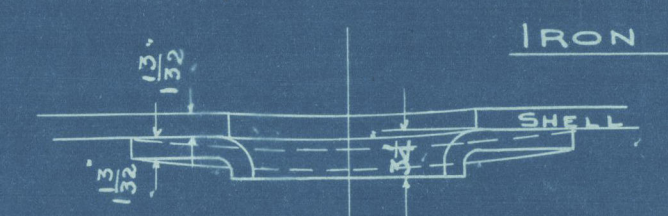
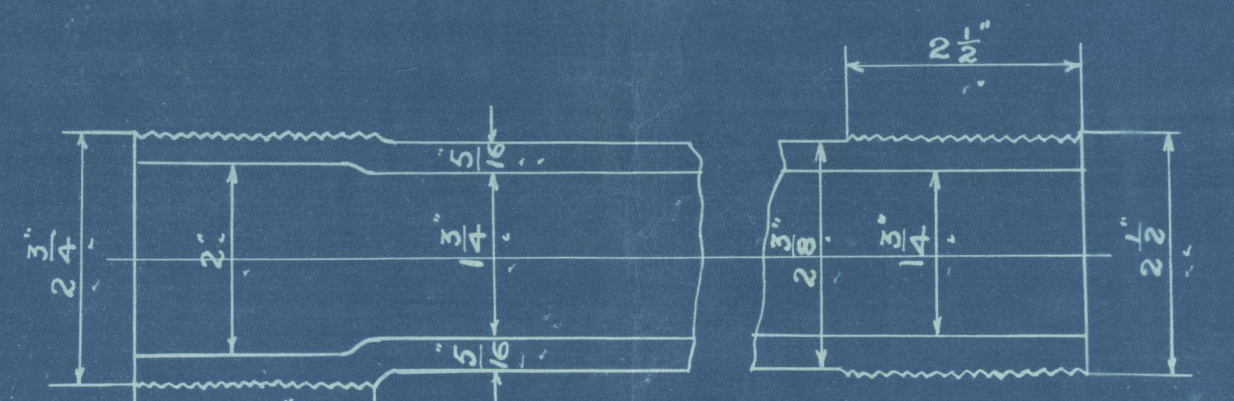
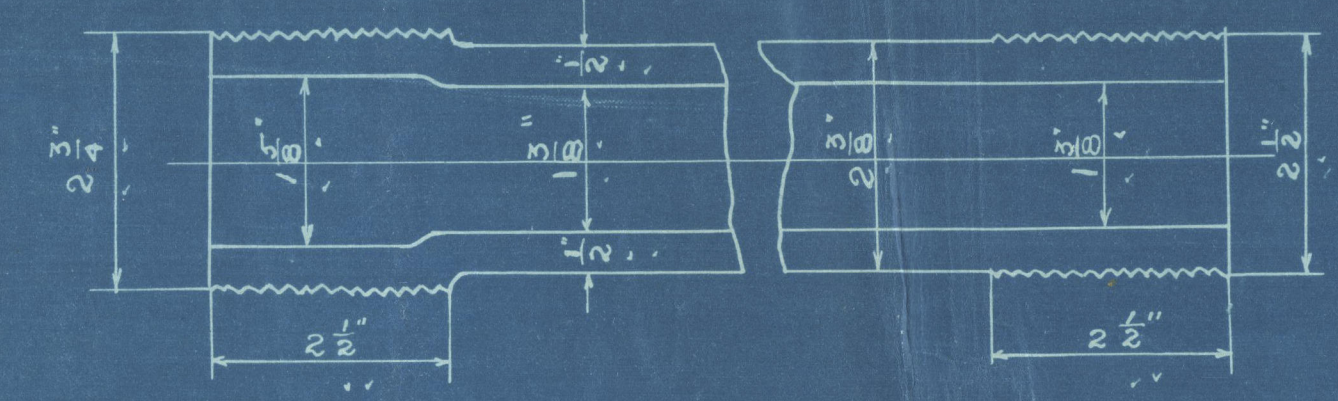


6302  
11/10/01  
16/10/01  
A.B. 15/10/01

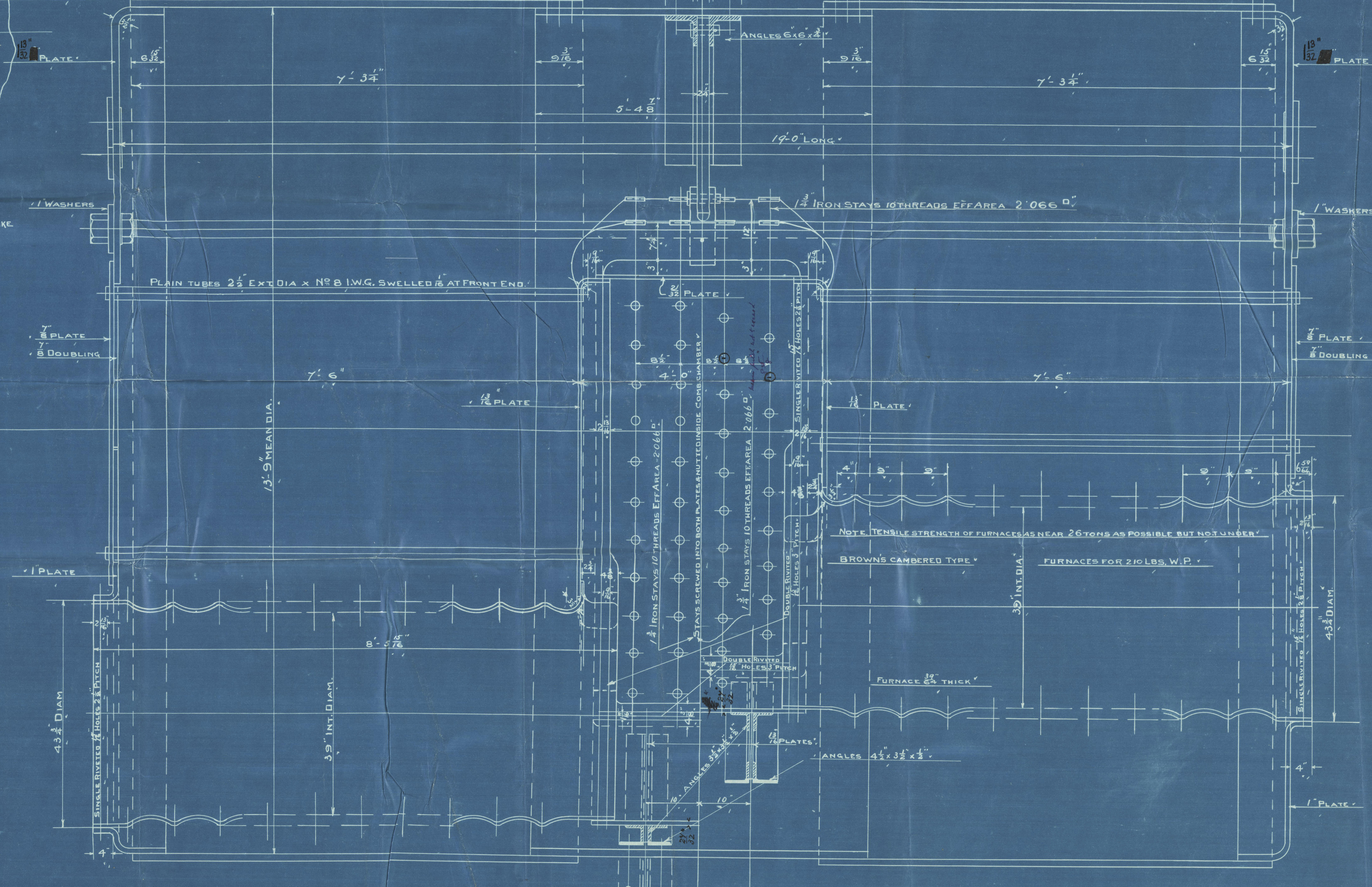
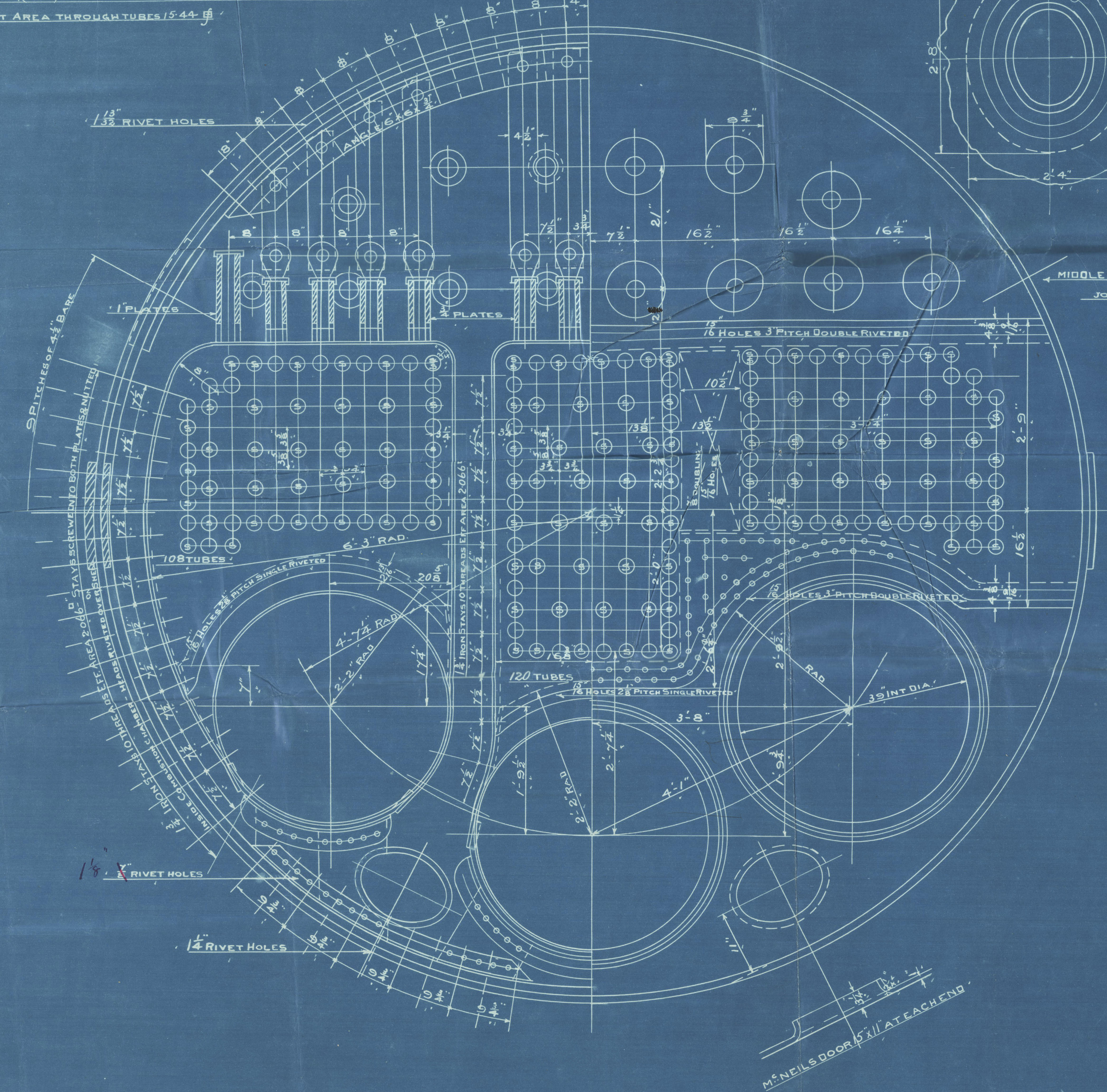
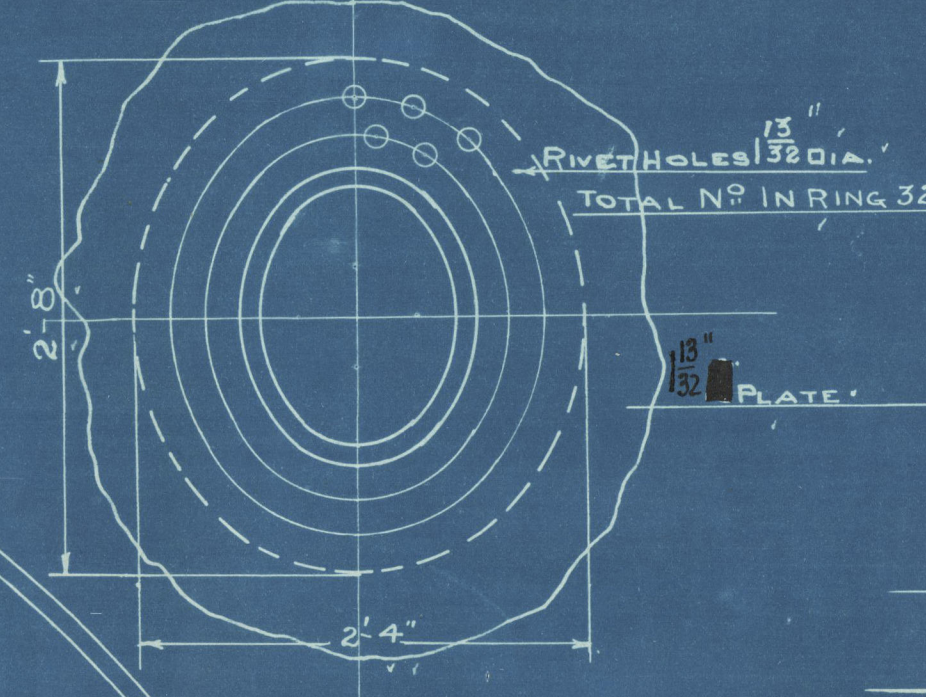
24.10.01

HEATING SURFACE	
672 TUBES 7'-6" LONG X 2 1/2" EXT DIA	3300'
6 FURNACES 7'-6" X 4 1/2" MEAN DIA	269'
TOP & SIDES OF COMBUSTION CHAMBER	176'
BACK TUBE PLATES	49'
FRONT "	66'
TOTAL HEATING SURFACE IN ONE BOILER	3890'
TOTAL HEATING SURFACE IN THREE BOILERS	11,670'
GRATE SURFACE	
6 FURNACES 39" INT DIA X 5'-0" BAR	97.5'
TOTAL GRATE SURFACE IN 3 BOILERS	292.5'

H. S. 39' 9" I. S. 38' 8 1/2"  
C. S. G. S.  
STEAM SPACE IN ONE BOILER 9" ABOVE C.C. TOP 550' 6"  
WEIGHT OF WATER (FRESH) " " 35 TONS  
DRAUGHT AREA THROUGH TUBES 15.44'



STEAM SPACE STAYS 3 1/2" DIA. 6 THREADS EFF AREA 7.239 D. 37.4 sq in



THICKNESS OF PLATE	
SHELL	1 3/32"
BUTT STRAP BUTTER	1 1/8"
INNER	1 3/32"
TOP FRONT	1 1/32"
FRONT TUBE PLATE	7"
DOUBLING	2"
FURNACE FEET	1"
BACK TUBE PLATE	16"
COMBUSTION CHAMBER TOP PLATES	2 1/2"
FURNACES	2 1/2"
CURBERS	3 1/2"
STEAM SPACE STAY WASHERS	1"

# STEEL MAIN BOILERS 30FF

## Nº 191

13'-9" MEAN DIA. X 19'-0" LONG X 200 LBS WORKING PRESSURE.

TO PASS BOARD OF TRADE & LLOYD'S SURVEYS

ALL MATERIAL TO BE STEEL EXCEPT TUBES, VERTICAL STAY BARS, COMB. CHAMBER STAYS, WHICH ARE IRON.

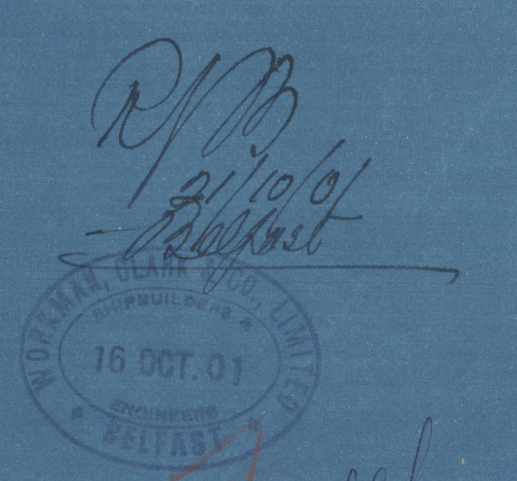
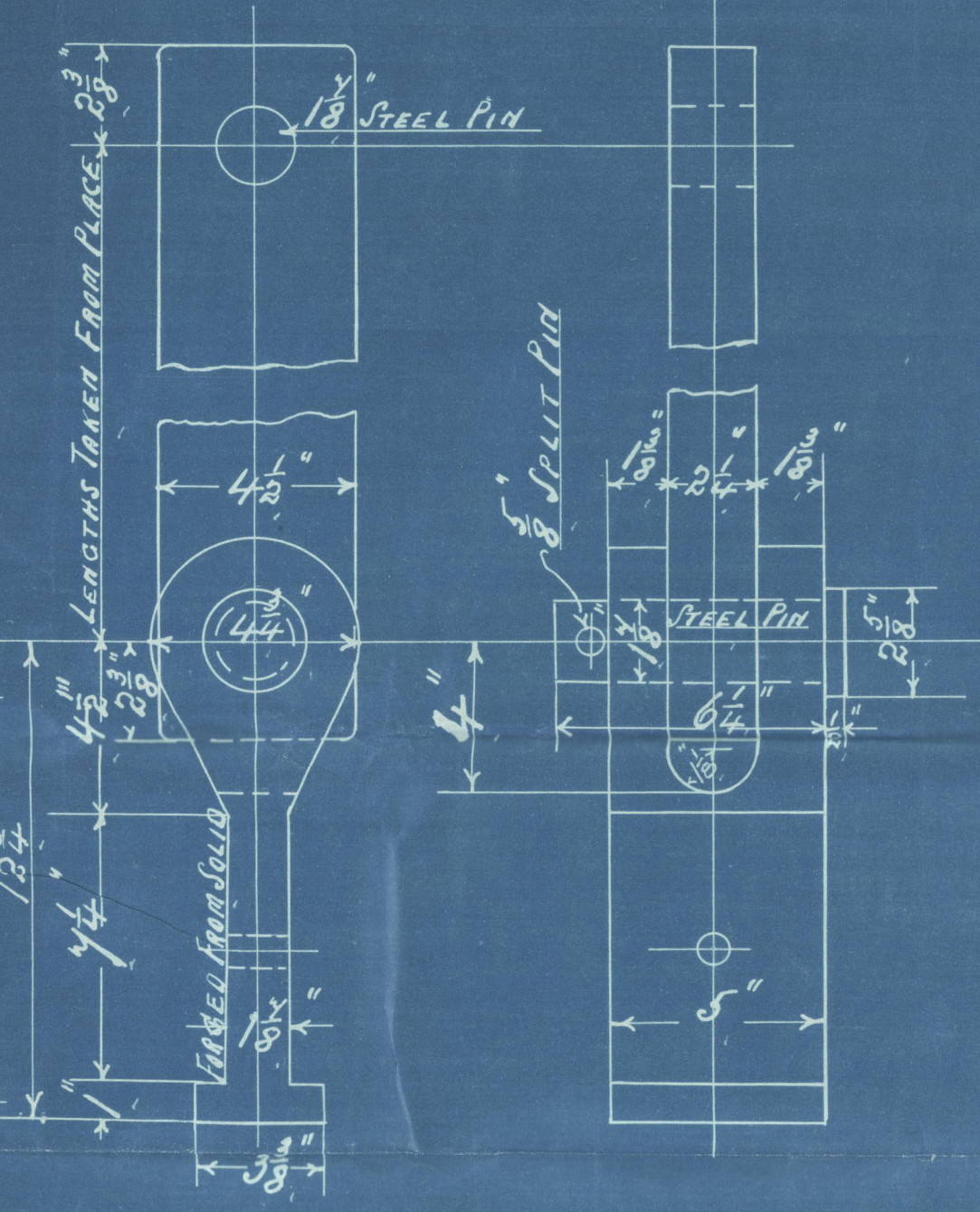
LONGITUDINAL JOINT  
PLATE 132 RIVET HOLES 1 1/2" PITCH 5 1/2" OUTER BUTT STRAP 1 1/2" THICK INNER 1 1/2" THICK  
PERCENTAGE OF PLATE 84.55 RIVETS BOFT. 84.99 LLOYDS 87.97  
FACTOR OF SAFETY 4.5 PRESSURE BY RULE BOFT. 20 LLOYDS 230 LBS.

CENTRE CIRCUMFERENTIAL JOINT  
PLATE 132 RIVET HOLES 1 1/2" PITCH 4 1/2" BARE  
PERCENTAGE OF PLATE 67.36 RIVETS BOFT. 66.01 LLOYDS 68.3

END CIRCUMFERENTIAL JOINTS  
PLATE 132 RIVET HOLES 1 1/2" PITCH 3 1/2"  
PERCENTAGE OF PLATE 58.03 RIVETS BOFT. 56.58 LLOYDS 58.54

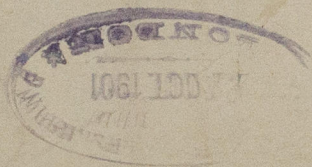
NOTE TENSILE STRENGTH OF SHELL PLATE 28 TO 32 TONS  
OTHER PLATES 26 TO 30 TONS

ALL RIVET HOLES DRILLED IN PLACE

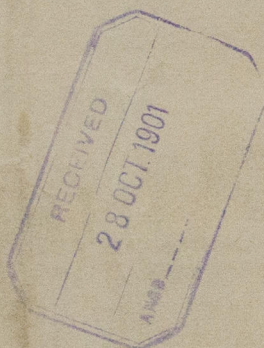




Belfast  
Wetherman & Co. Ltd.  
L.S.S. 191  
Major Railers  
L.S.S. "Keemun"



Keemun  
Bel 5498



RETAIN



© 2021

W613 - 0179

Lloyd's Register  
For more on