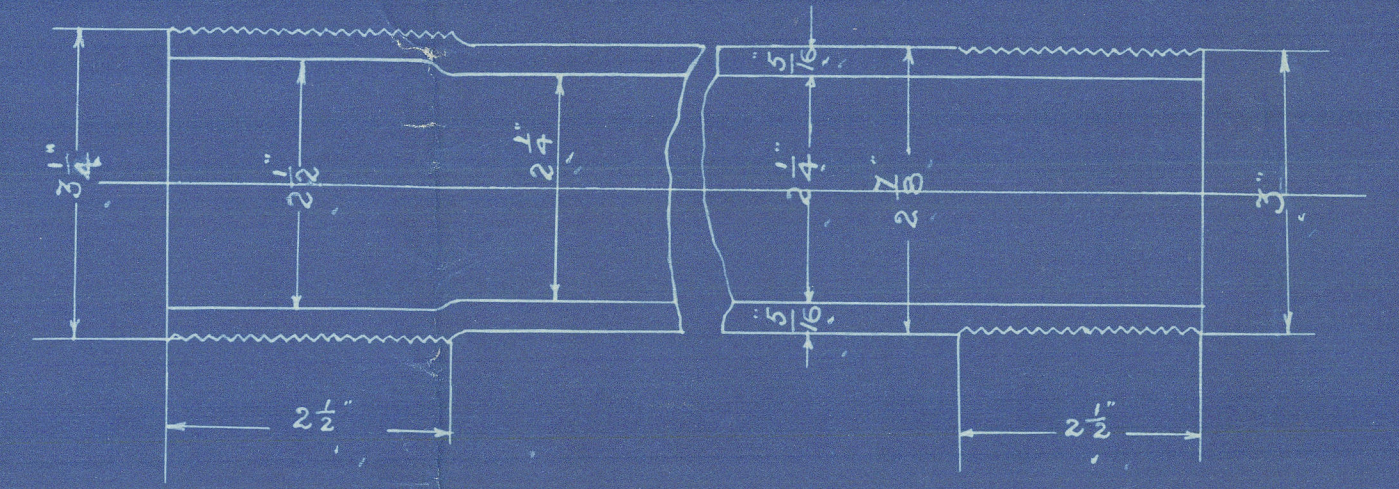


6320  
 8/10/01  
 23/10/01  
 RD.

HEATING SURFACE	
210 TUBES 3" EXT. DIA. X 7'-1" LONG	1169
3 FURNACES 36 1/4" MEAN DIA. X 7'-1" "	111
TOP & SIDES OF FIREBOXES	98
BACKS	47
BACK TUBE PLATE	28
FRONT	24
TOTAL HEATING SURFACE	1477

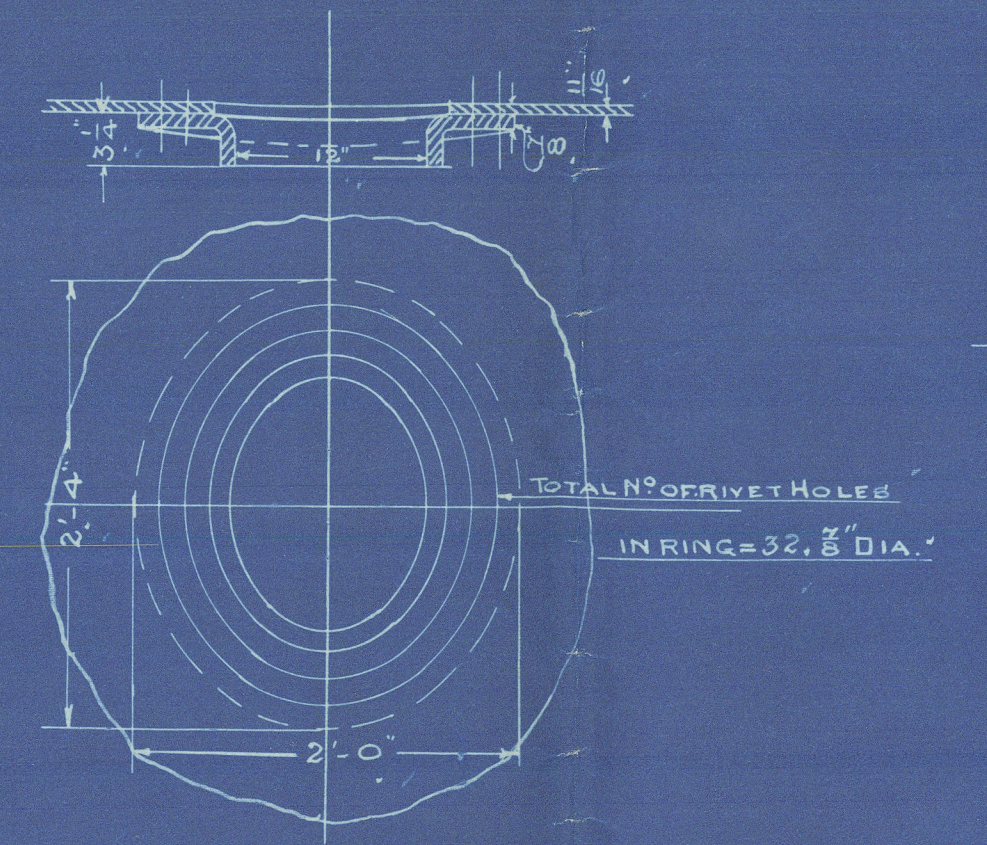
GRATE SURFACE 3 FURNACES 33 1/2" INT. DIA. X 5'-4" BAR = 45

$\frac{H.S.}{G.S.} = \frac{32.82}{25.97}$

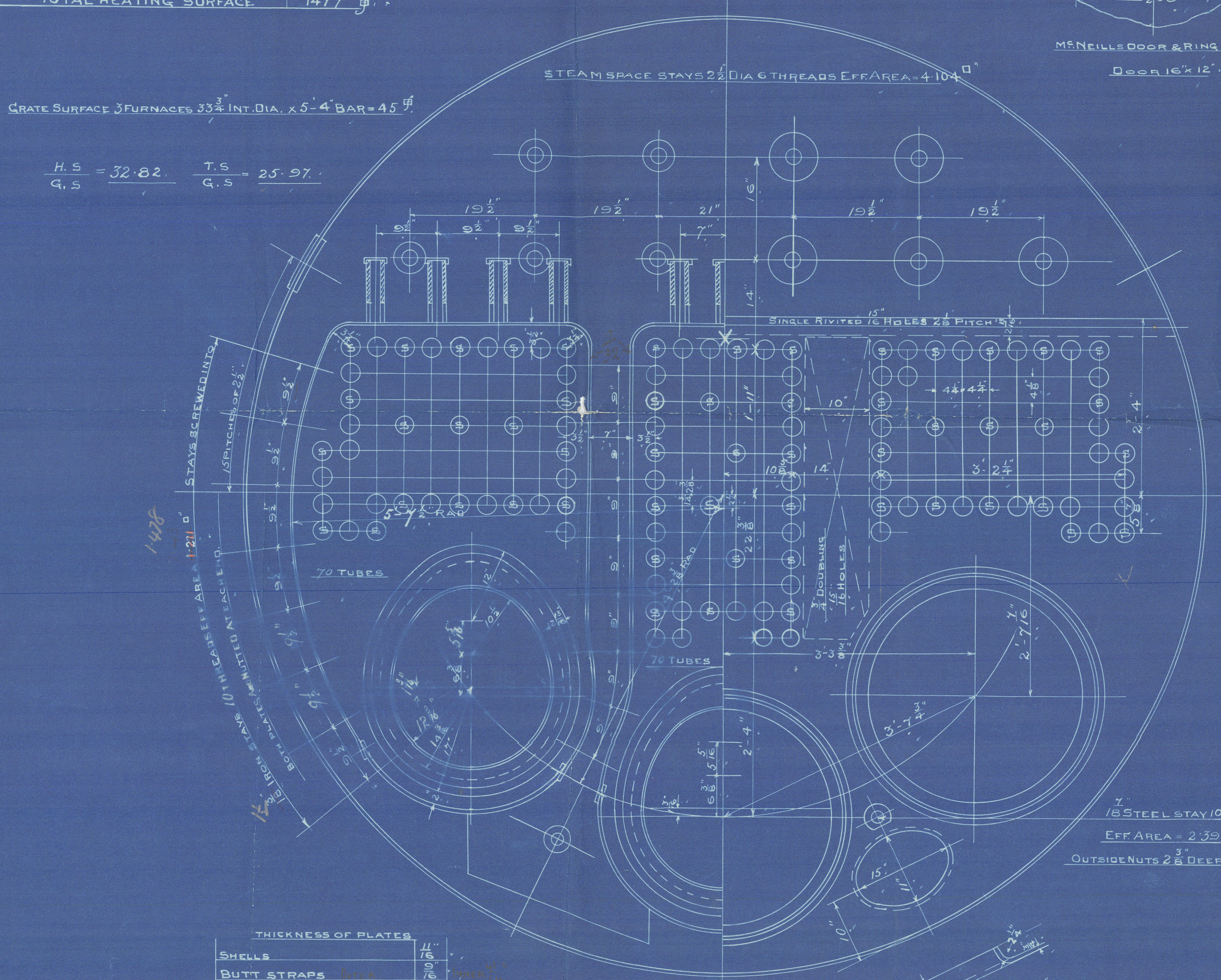


IRON STAY TUBES MARKED S. 10 THREADS PER INCH

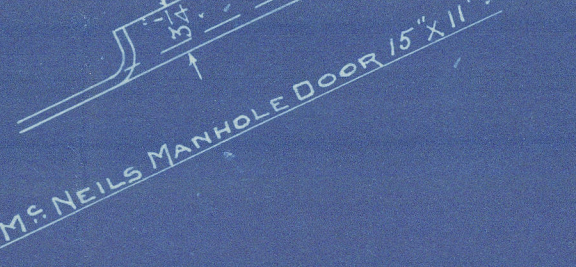
STEAM SPACE FROM 9" ABOVE THE C.C. TOP = 252  
 WEIGHT OF WATER FRESH = 16 TONS  
 DRAUGHT AREA THROUGH TUBES = 7.64



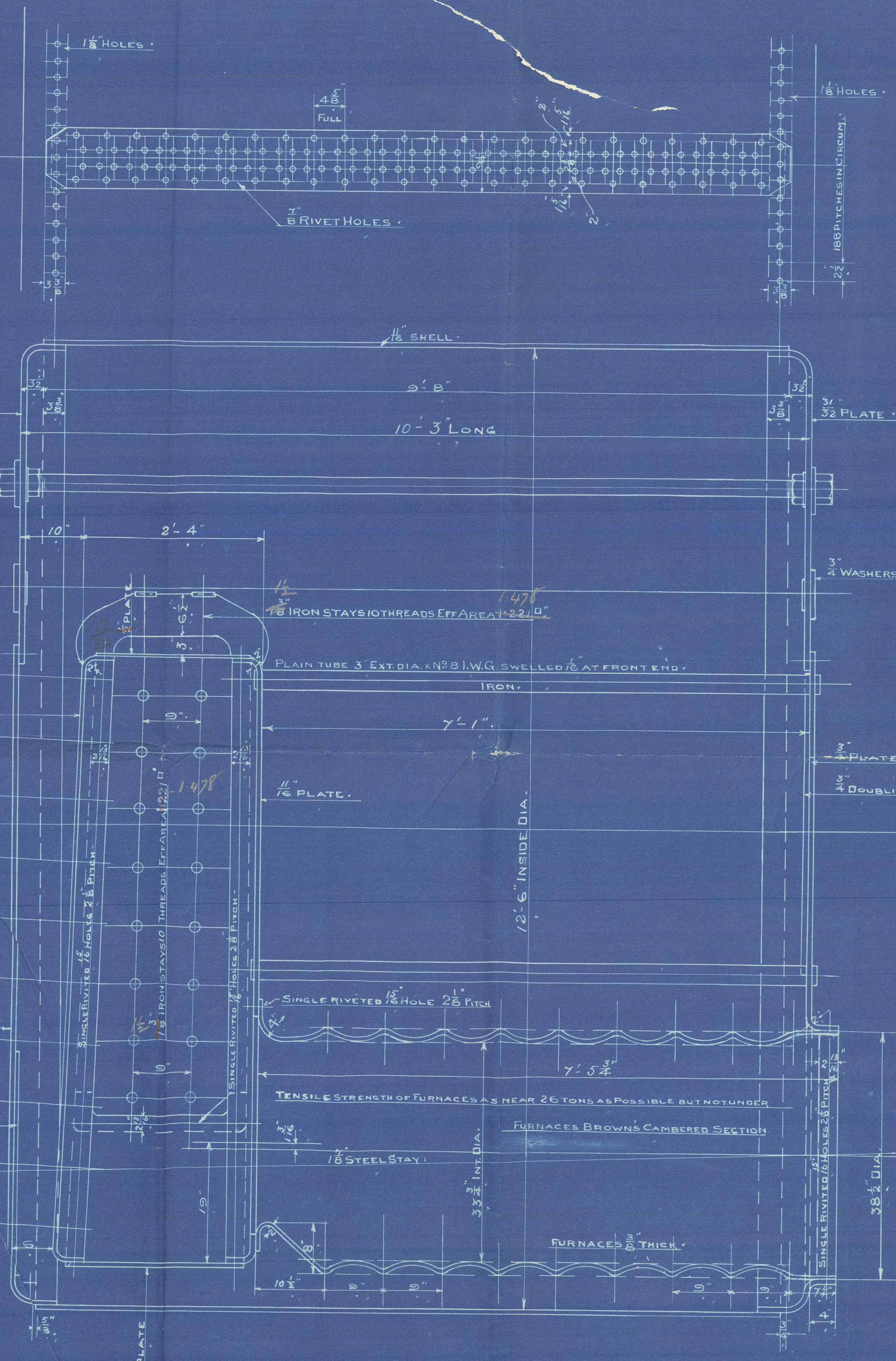
MANHOLE DOOR & RING  
 DOOR 16" X 12"



THICKNESS OF PLATES	
SHELLS	1/2"
BUTT STRAPS	1/2"
TOP FRONTS & BACK	3/8"
FURNACE FRONT	1/2"
" " DOUBLING	1/2"
BOTTOM BACK	3/8"
" " DOUBLING	3/8"
BACK TUBE PLATES	1/2"
FIREBOX BACKS	1/2"
TOP & SIDES	1/2"
BOTTOMS	1/2"
GIRDERS	1/2"
FURNACES	1/2"
STEAM SPACE STAY WASHERS	1/2"



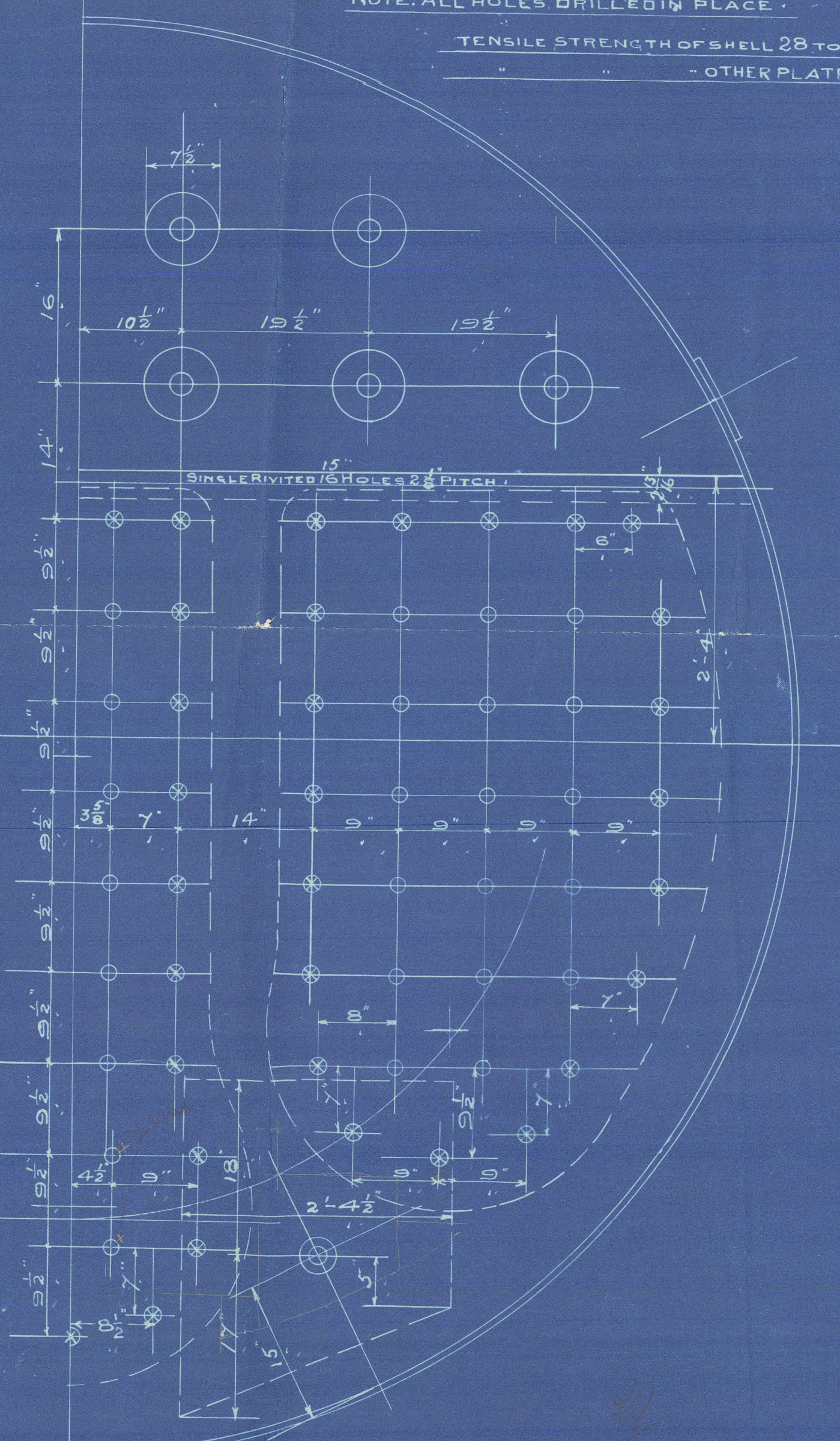
PASSED BOARD OF TRADE SURVEY  
 LLOYDS



LONGITUDINAL JOINT  
 PLATE 1/2" PITCH 4 1/2" (FULL) RIVET HOLES 1 1/2" BUTT STRAP 1 1/2" RIVETS  
 PERCENTAGE OF PLATE = 81.14  
 RIVETS BOFT = 81.29 LLOYDS = 84.12  
 WORKING PRESSURE BY RULE BOARD OF TRADE 99 1/4 LBS PER SQ. IN.  
 LLOYDS 106  
 FACTOR OF SAFETY BOARD OF TRADE TAKEN AT 4.7

CIRCUMFERENTIAL JOINT  
 PLATE 1/2" PITCH 2 1/2" RIVET HOLES 1 1/2"  
 PERCENTAGE OF PLATE 55 RIVETS BOFT. 47.5 LLOYDS 49.15

NOTE, ALL HOLES DRILLED IN PLACE  
 TENSILE STRENGTH OF SHELL 28 TO 32 TONS PER SQ. IN.  
 OTHER PLATES 26 TO 30 TONS PER SQ. IN.



FIREBOX STAYS  
 STAYS MARKED 1/2" DIA. 10 THREADS EFF AREA 1.76 SQ. IN.  
 1/2" DIA. 1.22 SQ. IN.

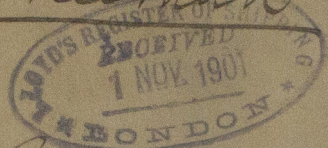
# DKY BOILER

TO PASS BOARD OF TRADE & LLOYDS SURVEYS  
 ALL MATERIAL STEEL EXCEPT TUBES & COMBUSTION CHAMBER STAYS WHICH ARE IRON. SCALE 1" = 1 FOOT.



Belfast  
Wet Quay Quay  
L.S.S. 191

Danley Bailey  
L.S.S. Keenan



Bel 5498

RECEIVED

W631 - 0177



© 2021

Lloyd's Register  
Foundation





W631-0177



© 2021

Lloyd's Register  
Foundation