

WEISSENFELS
FRACHTDAMPFER DEUTSCHE-DAMPFSCHIFFARTS-GESELLSCHAFT HANSA
in BREMEN
CASAUT von der A. O. WESER BREMEN
M 1206

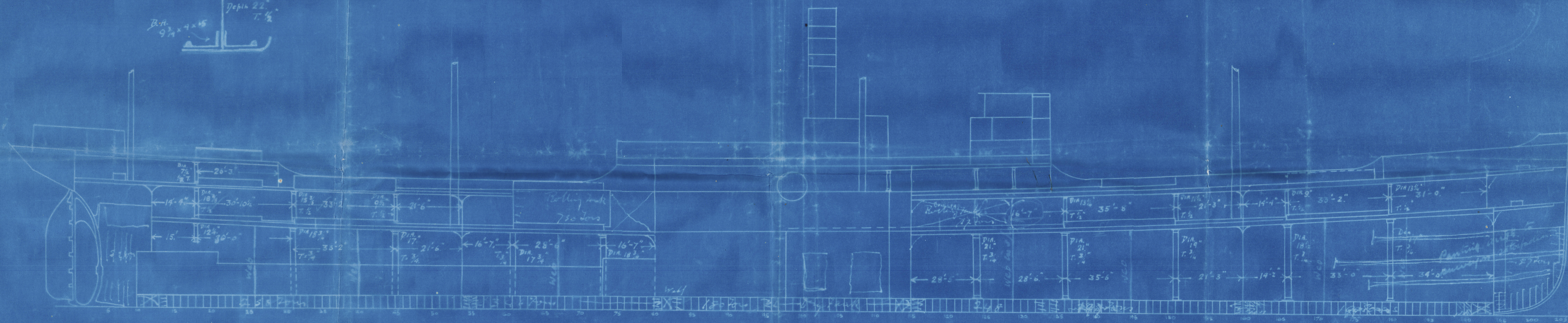
45.5 m = 149' 8 1/2"
18.2 m = 59' 8 1/2"
10.9 m = 35' 9 1/2"

FOUR DECK
Angle 4" x 3 1/2" x 5"
Depth 1 1/2" Thick steel
B.H. 3 1/2" x 4 1/2" x 5"
5" dist. plate

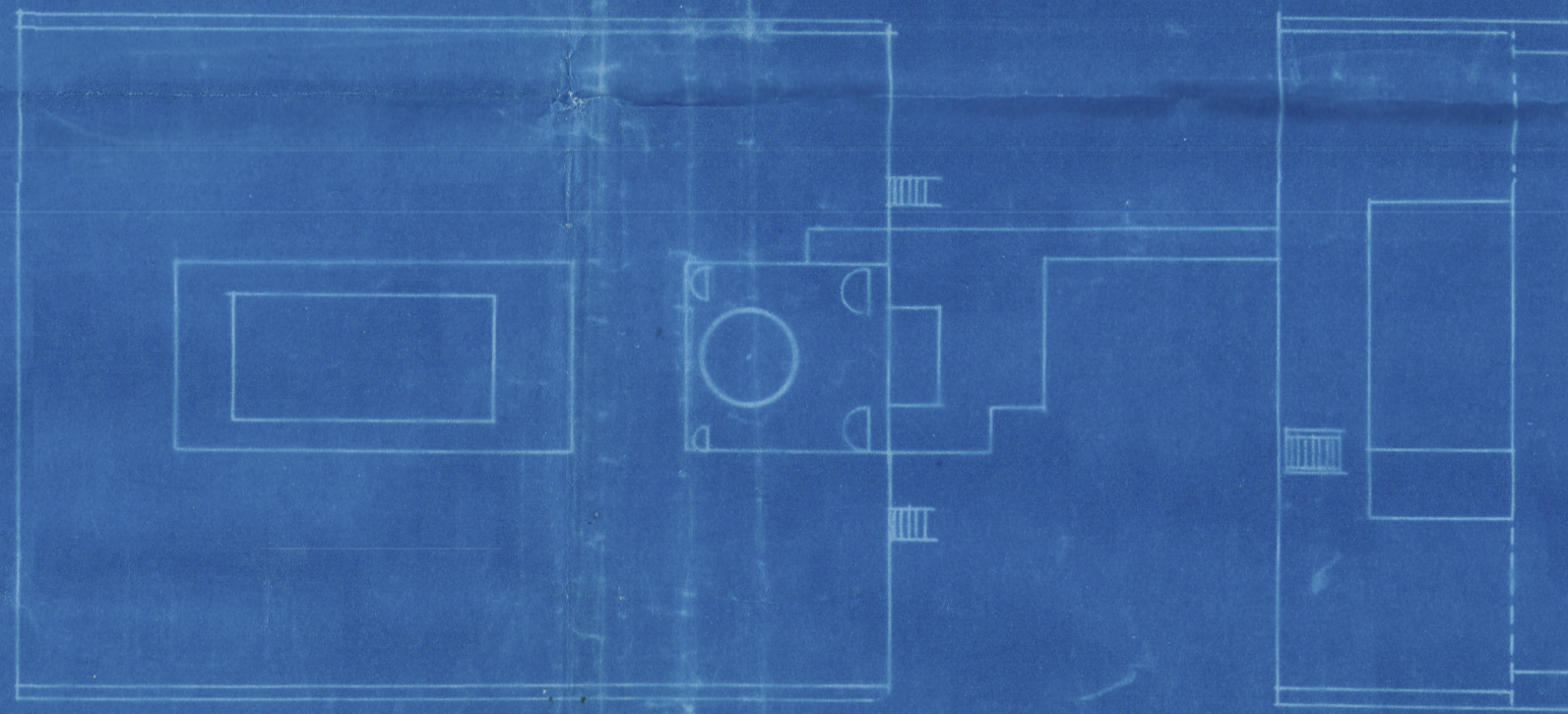
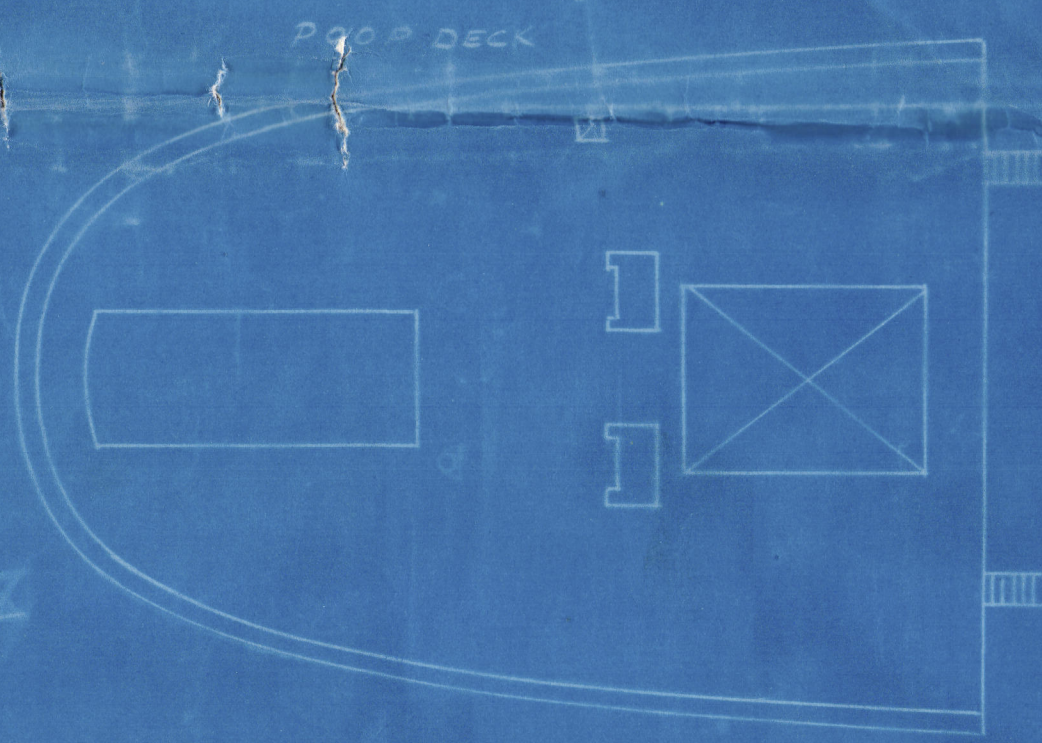
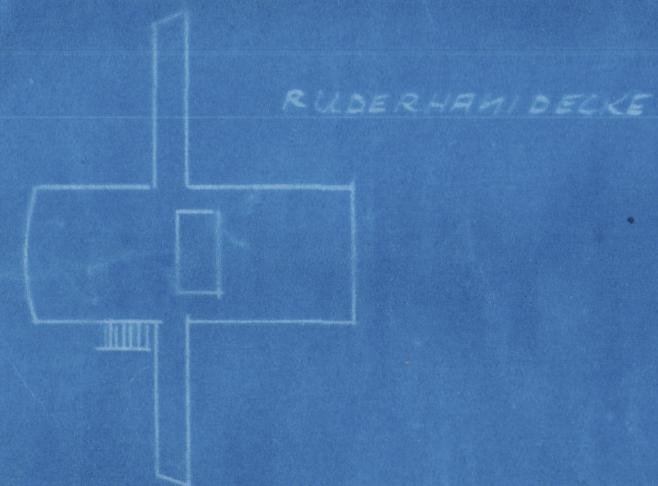
UPPER DECK
Angle 4" x 4" x 5"
Depth 2 1/2"
B.H. 8" x 8 1/2" x 5"
5" dist. plate

2nd DECK
Angle 4" x 4" x 5"
Depth 2 1/2"
B.H. 9 1/2" x 4" x 5"

For H. H. G. G. G.

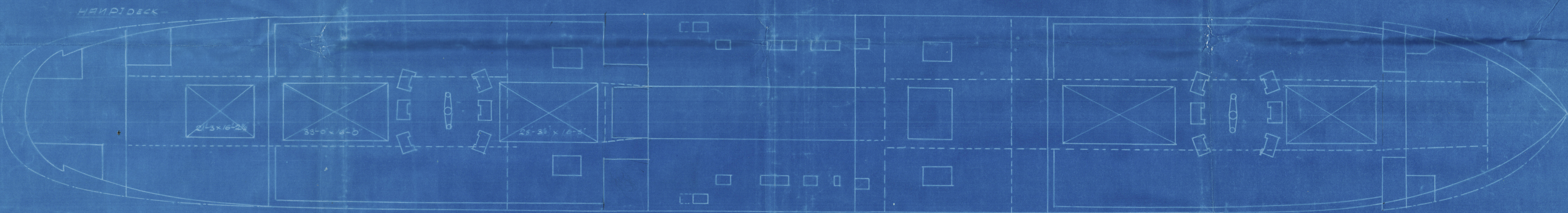


Additional web frames to be
shown in profile



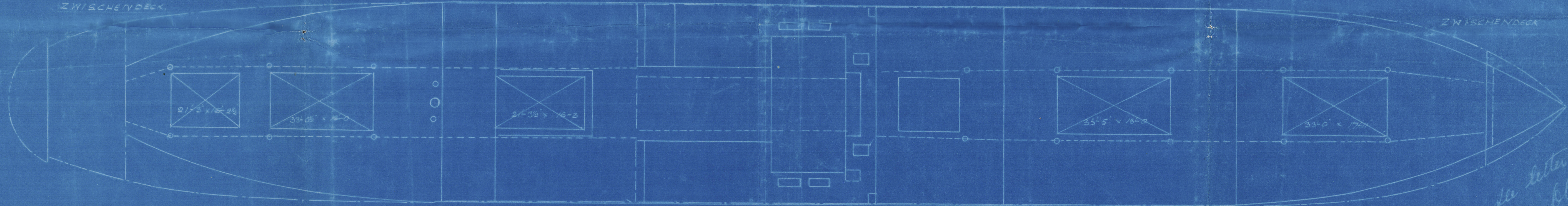
BOOTS DECK

KOMMANDOBANK



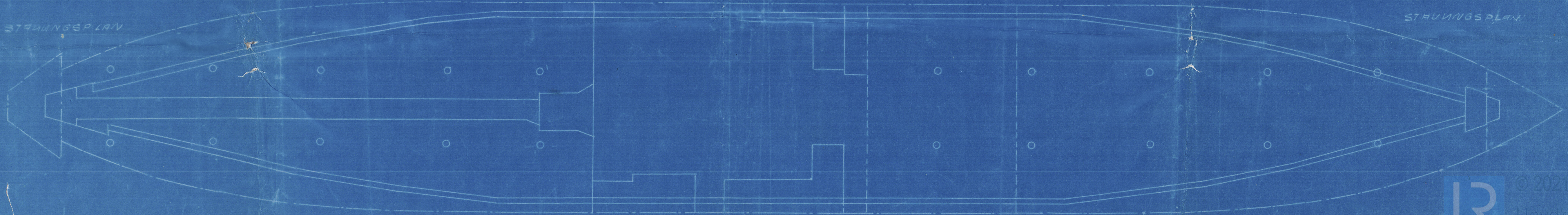
BRUCKENDECK

BACK DECK



ZWISCHENDECK

ZWISCHENDECK



NUTZBAUPLAN

NUTZBAUPLAN

See letter
11/630-0238

Profile

C/Auckland

Pateota

RETAIN

3. 11. 19

© 202

Lloyd's Register
Foundation

W630-0238