

SURFACES	ONE BOILER	THREE BOILERS
TUBES	2100	6300
FIREBOX TOP & SIDES	158	474
BACK	82	246
TUBEPLATE	55	165
FURNACES	161	483
TOTAL HEATING SURFACE	2556	7668
GRATE AREA (5" 6" EMAS)	63.3	190
TUBE AREA	11.65	34.95
WATER	166	480
STEAM SPACE	514	1542
GRATE AREA HEATING SURFACE	1:40.4	
TUBE	1:33.2	
AREA	5.43:1	
WATER	1:2.52	
STEAM SPACE	1:8.1	
% BOILER ABOVE FIREBOX	32.2	
WEIGHT OF WATER	26 TONS	79 TONS

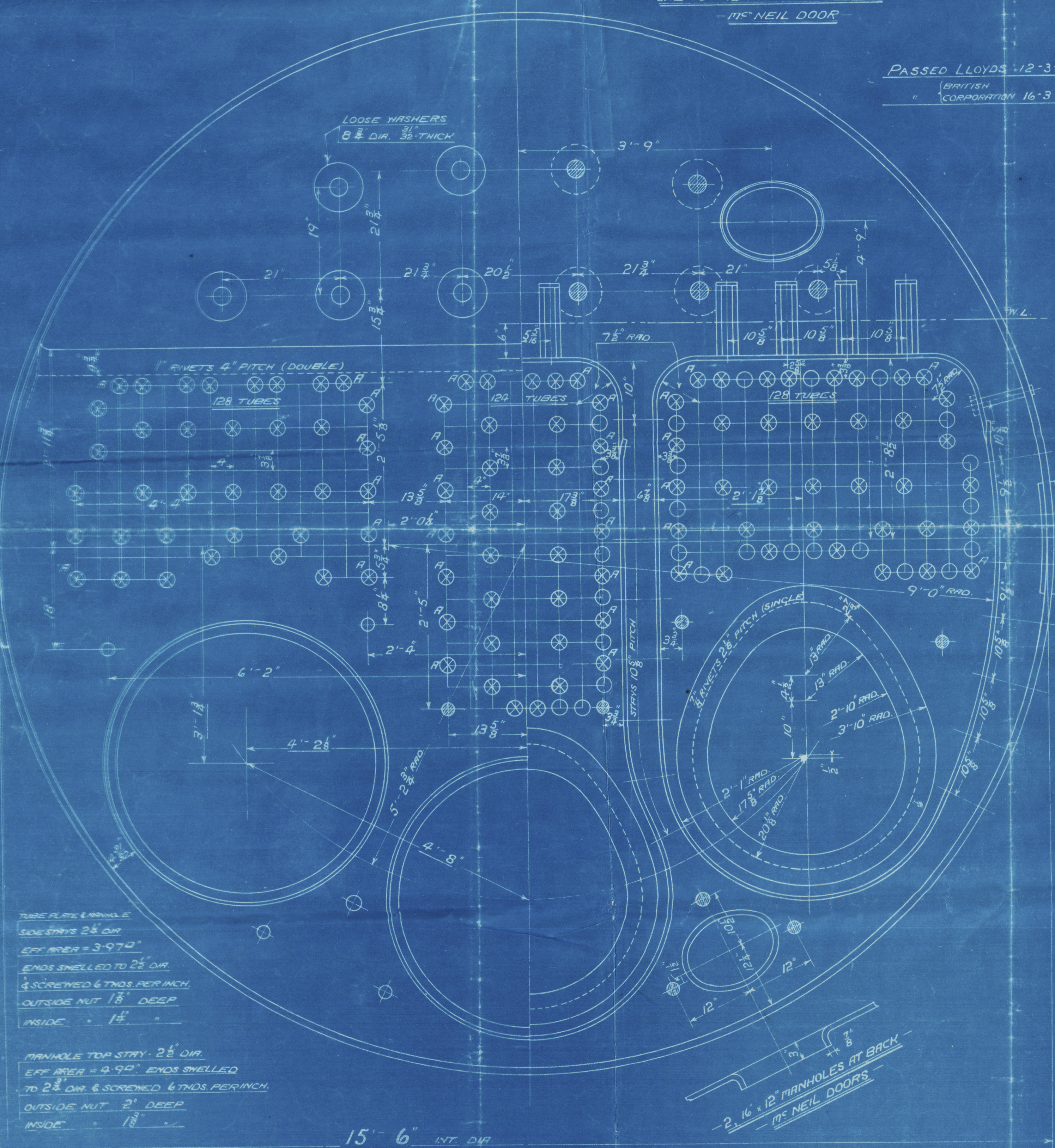
- RIVETING -			
	LONG L	BACK END CIRC	FRONT END CIRC
RIVET HOLE DIA	1 1/8"	1 1/8"	1 3/8"
PITCH	9.125"	3.54"	3.19"
% PLATE	85.6	63	63
% RIVET	88.9	51.9	46.0

LIMITS OF TENSILE STRENGTH & MATERIAL	
SHELL, BUTTSTRAPS & GIRDERS	28 TO 32 TONS
OTHER PLATES	26 " 30 "
FURNACES	26 " 30 "
MAIN STAYS	28 " 32 "
SCREWED STAYS	26 " 30 "
RIVET BARS	26 " 30 "

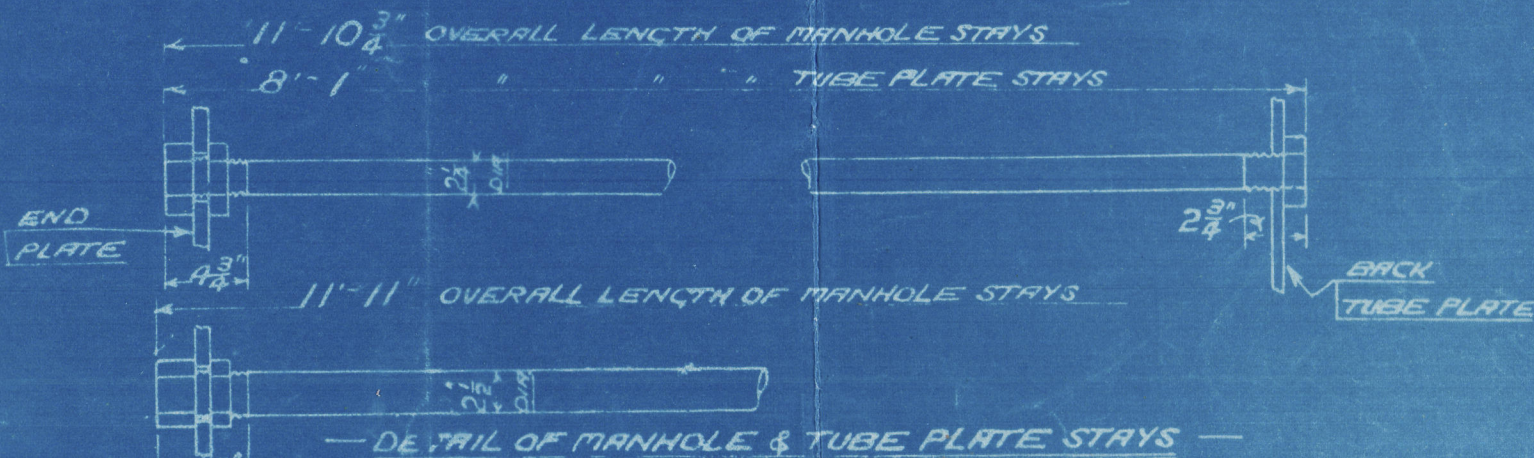
ALL RIVET HOLES DRILLED IN PLACE
MAIN STAYS SWELLED AT ENDS BY
HYDRAULIC PRESSURE AND RINGERED

ONE 16" x 12" MANHOLE AT BACK
1/4" NEIL DOOR

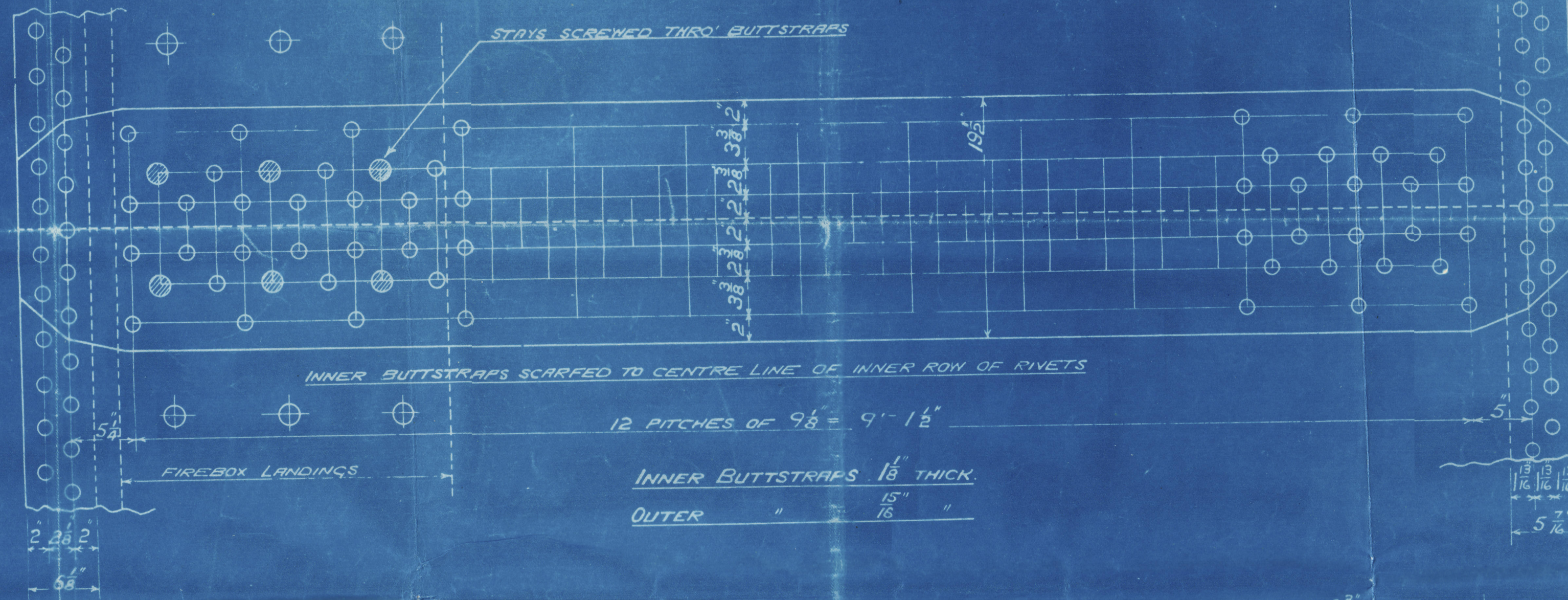
PASSED LLOYDS 12-3-17
BRITISH
CORPORATION 16-3-17



15' 6" INT. DIA

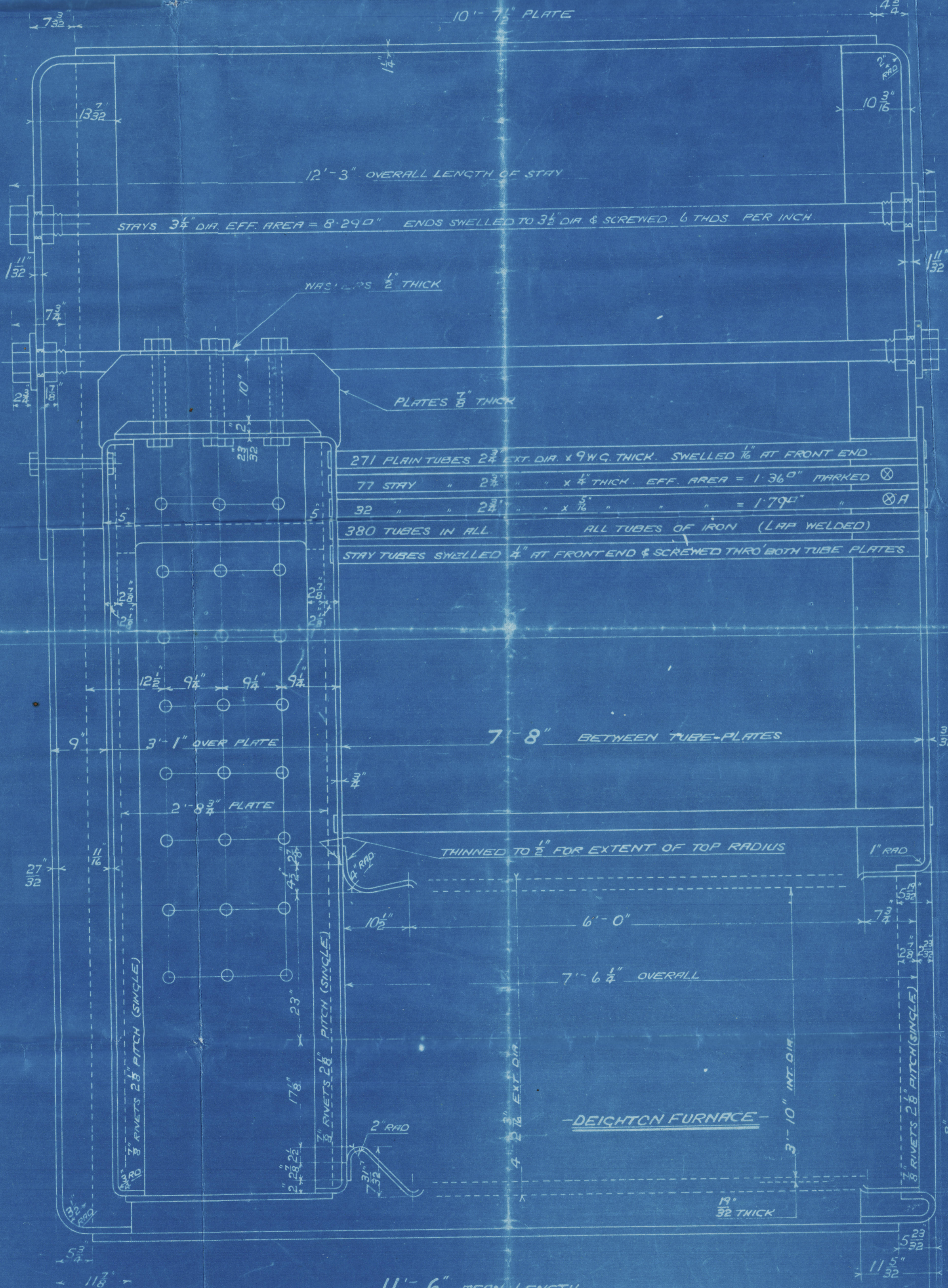


NOT TO BE USED
AS WORKING DRAWING



FRONT END CIRC
184 PITCHES OF 3.19"

A	CLAS
B	CLAS



11' 6" MEAN LENGTH

MAIN BOILER (SECOND SERIES)

- 3 OFF -

STANDARD VESSELS A CLASS

WORKING PRESSURE = 180 LBS PER SQ. INCH

- TO PASS LLOYDS SURVEY -

- SCALES 1' 8 1/2" = ONE FOOT -

ALL FIREBOX STAYS SCREWED THRO' BOTH PLATES & NUT FITTED AT EACH END
EXCEPT STAYS FROM WING FIREBOX TO SHELL WHICH PROJECT 8" & ARE CHAMFERED
ALL 1/2" NUTS 1 1/2" DEEP EXCEPT ON GIRDER TOPS WHERE THE OUTSIDE NUTS ARE 1 1/2" DEEP

ALL 2" & 2 1/2" NUTS 1 1/2" DEEP

- FIREBOX STAYS - STEEL -			
POSITION	MARK	DIA.	EFF. AREA
BACK TOP & SIDES	1	1 1/8"	2.395 O"
WIDE SPACE	2	2"	2.75 O"
TOP ROW	3	2 1/2"	3.49 O"

DAVID ROWAN & CO'S
REFERENCE

DOT 23496A

TRACED 7/7/1900

W63-0075

S.S. "OLNA" and "OLEANDER"

Approved Plan of Main Boilers.

Off 43660



© 2020

Lloyd's Register
Foundation

W63-0075