

DEVONPORT  
M.O.D. 60941  
DATE 29.7.20

See also M.C. 60947  
See FLY O.C. 60954

# "OILERS" Nos 1 & 2

ARRANGEMENT OF BULKHEADS (CONSEQUENT ON REARRANGEMENT OF BOLLER ROOM)

PREPARED IN ACCORDANCE WITH D 15214/20. 28/5/20 (3866)

SCALE 1/4" = ONE FOOT.

SECTION AT 39 OT.B. LOOKING FORWARD

SECTION AT 45 OT.B. LOOKING FORWARD

ENTER LONGITUDINAL TO BE FITTED BETWEEN Nos 29-30 B.M.

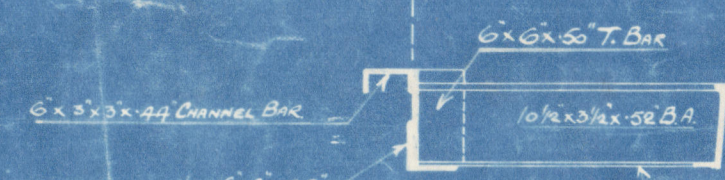
BOLLER SIDE BULKHEAD LOOKING TO PORT. STARBOARD SIDE SHOWN



MODIFIED IN **Red**  
IN ACCORDANCE WITH  
LLOYD'S LETTER  
DATED 14-8-20.

APPROVED  
LLOYD'S SURVEY  
17-8-20

Plan at A.B. Scale 1/2" = One Foot



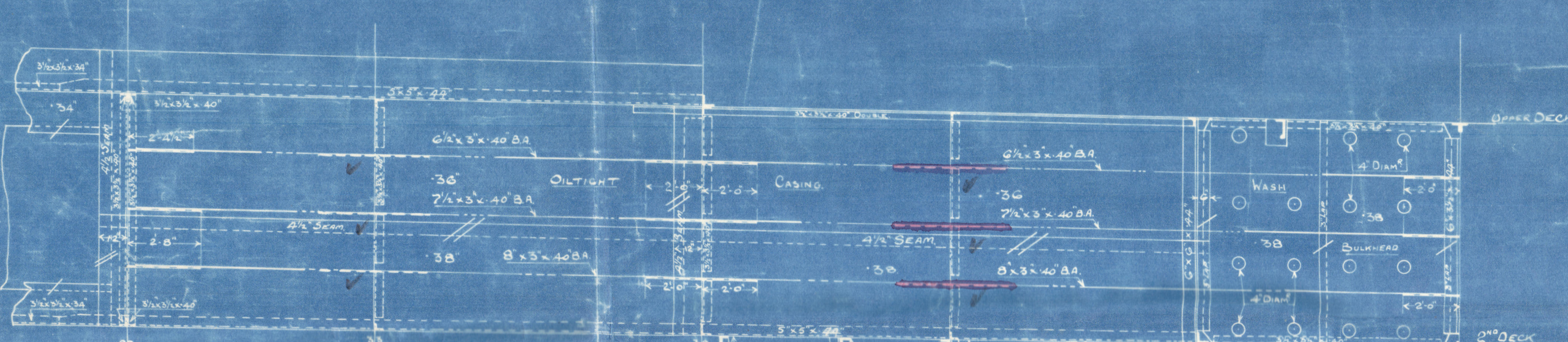
SPECIAL ATTENTION TO BE GIVEN  
TO THE FITTING OF THIS PLATE

ELEVATION OF BOLLER ROOM CASE LOOKING TO PORT. STARBOARD SIDE SHOWN

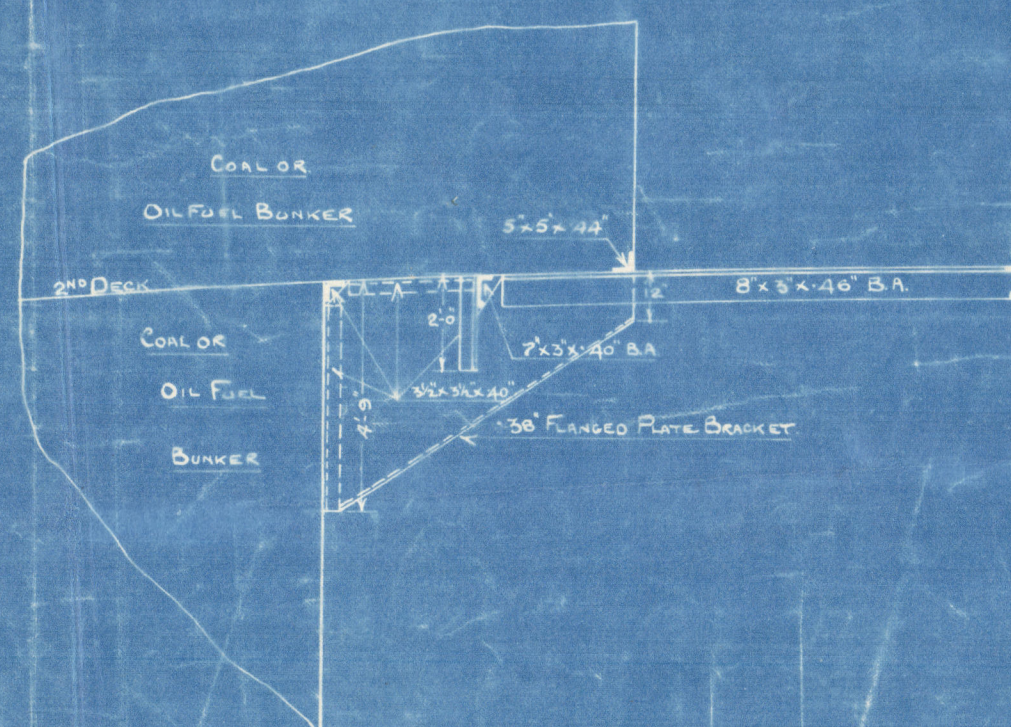
SECTION AT 29 LOOKING FORWARD OUTWARD BULKHEAD  
BETWEEN 2<sup>nd</sup> & UPPER DECK

ELEVATION OF WED AT 298<sup>th</sup>  
LOOKING TO PORT

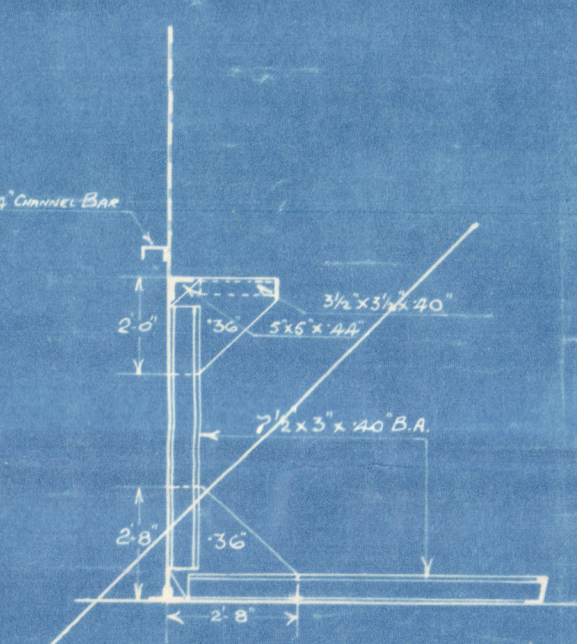
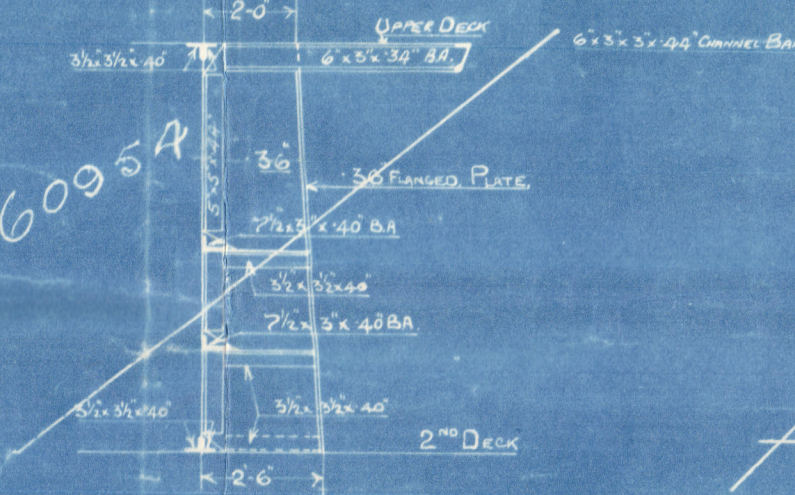
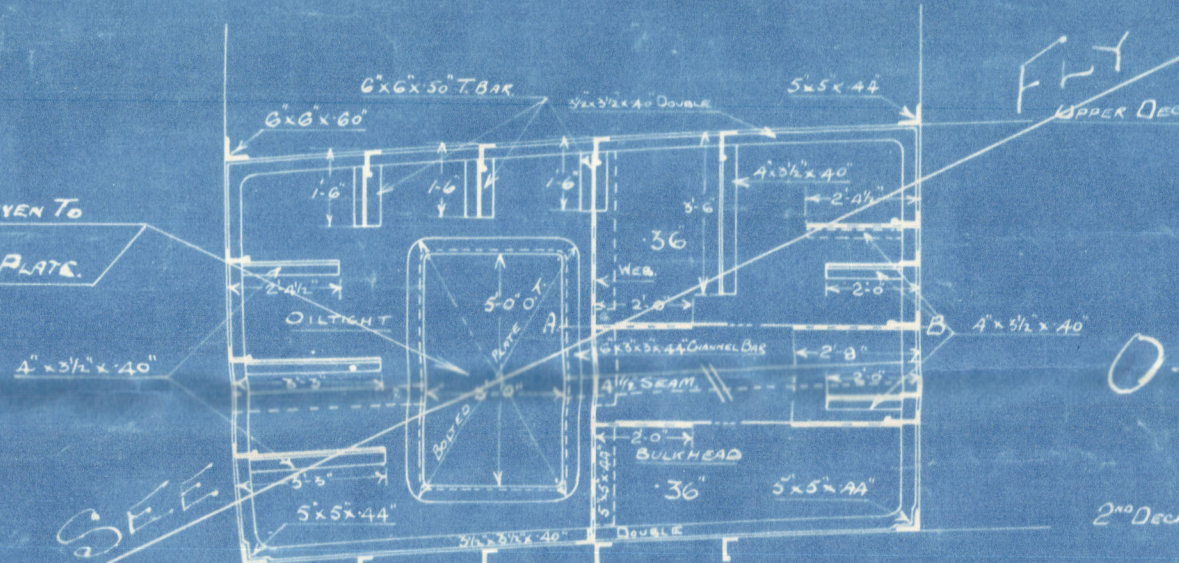
PLAN AT A.B.



SECTION THROUGH BRACKET X



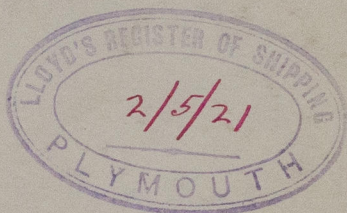
SPECIAL ATTENTION TO BE GIVEN TO  
THE FITTING OF THIS DOWN PLATE



Drawn by R. S. Jones  
S.P.



Orders Nos 1 & 2  
Arrangement of Bulkheads  
Consequent on Re-arrangement  
of Boiler Room



R. F. A. Olander.

Cardiff Report  
No. 43,660

Plymouth  
2/5/21.



W63-0073

© 2020

Lloyd's Register  
Foundation