

Received  
2/4/13

10.4.13

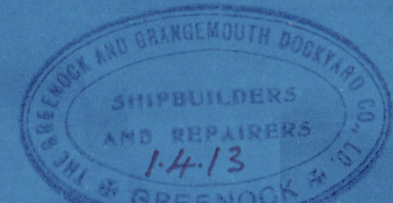
# S.S.355 PROFILE & DECK PLAN

SCALE 3" = 1' 0"

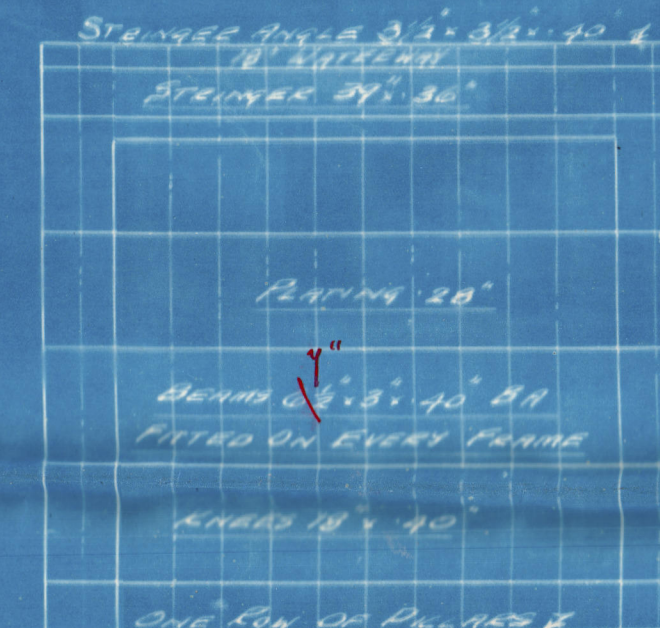
DIMENSIONS: 390' 0" x 52' 0" x 24' 3" M.D.

THE GREENOCK & GRANGEMOUTH DUCKY CO. LTD

GREENOCK



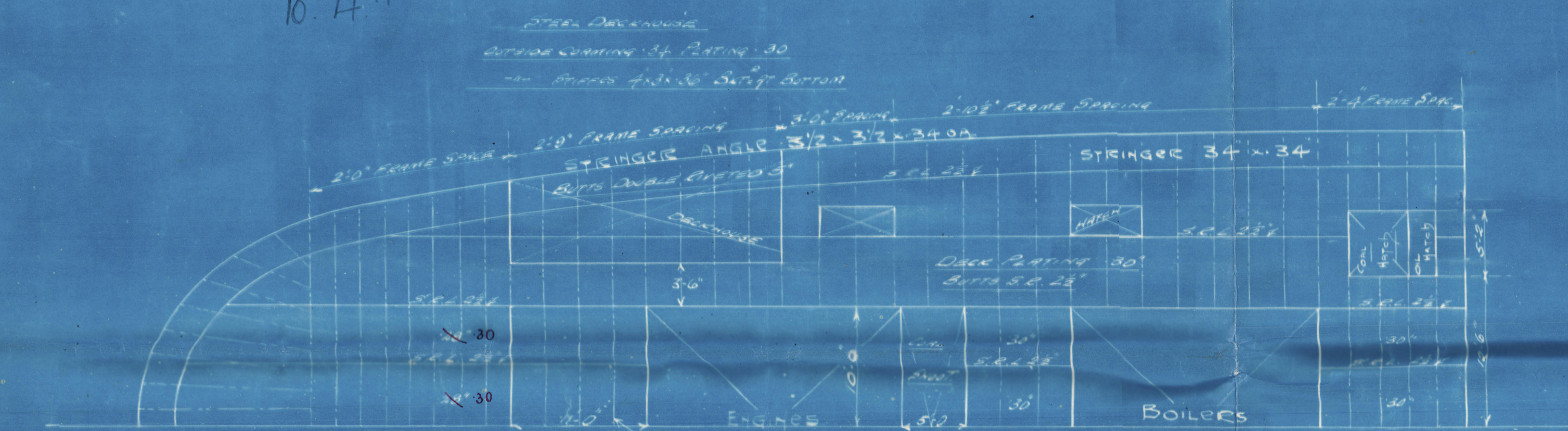
NOTE: THE LUNGS, STIFFERS OF TRANSVERSE & LONGITUDINAL BULKHEAD PLATING, EXCLUDING PLATE RATES, CENTRE GIRDERS TO BE INCREASED IN THICKNESS PER RULE WHERE BULKHEAD OR INCREASED DEPTH DUE TO SHEER. WHERE ADDITIONAL STIFFENERS TO TRANSVERSE & LONGITUDINAL BULKHEADS ARE REQUIRED IN VIEW OF INCREASED DEPTH DUE TO SHEER, STIFFENERS TO BE PROVIDED FROM TOP OF TRUNK. THE ADDITIONAL STIFFENERS TO BE INCREASED ABOVE SIZE OF LOWEST STIFFENER SHOWN ON MODSHIP BULKHEAD PLAN 3" IN DEPTH OR 1/4" IN THICKNESS FOR EACH ADDITIONAL LINE WHERE TANK DECK POSSIBLE TO BASE WITH UPPER DECK SHEERED. THE HEIGHT TO TANK DECK TO BE ASSURED AT A POINT 8' 0" BELOW UPPER DE.



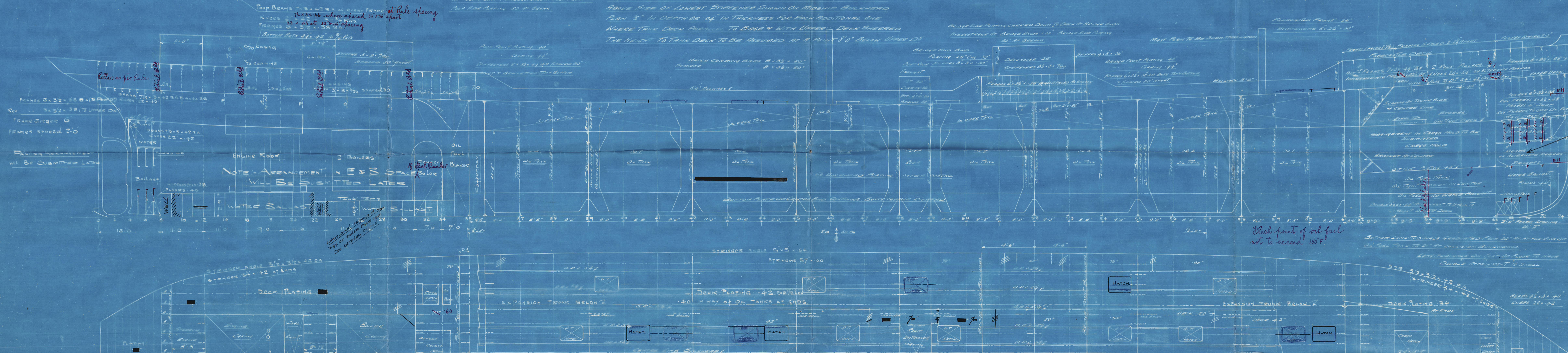
BRIDGE DECK



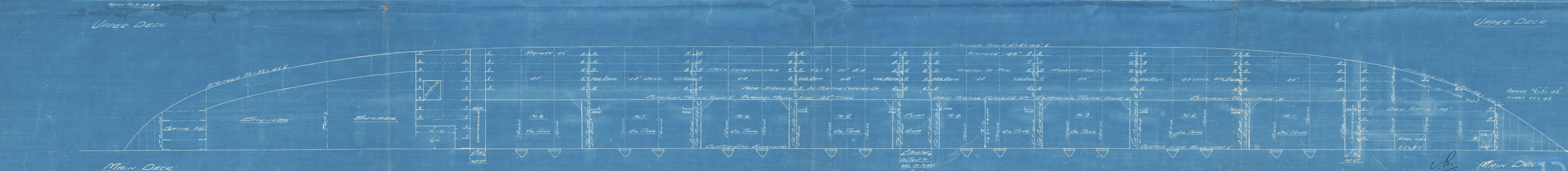
FORECASTLE DECK



UPPER DECK



NOTE: ARRANGEMENT IN E & S SPACE WILL BE SUBMITTED LATER



MAIN DECK

MAIN DECK

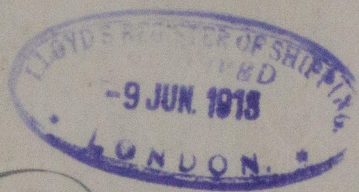


S S K<sup>o</sup> 355

355-

Amended  
Profile and Deck

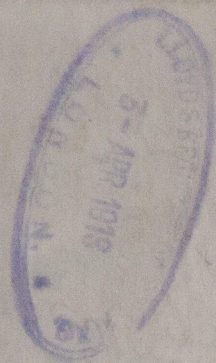
Messrs.  
The Greenock & Grangemouth  
Dockyard Co Ltd



M. Cassio  
Greenock L. & Co Report N<sup>o</sup> 16634



RETAIN



W627-0102



© 2020

Lloyd's Register  
Foundation